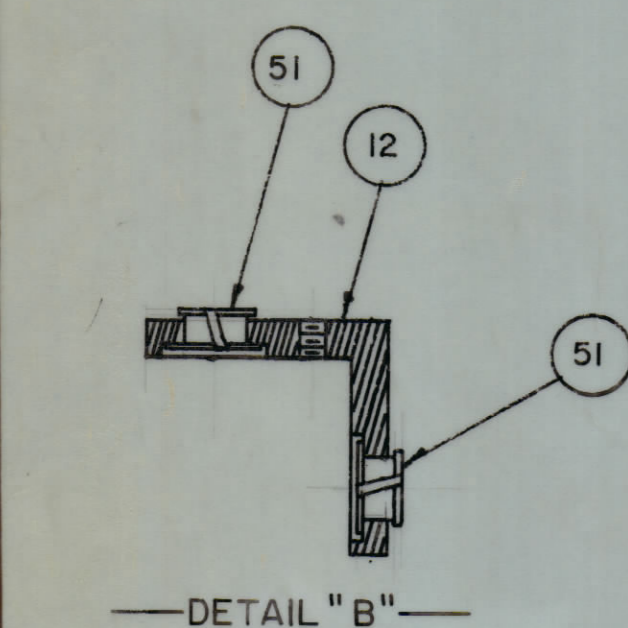
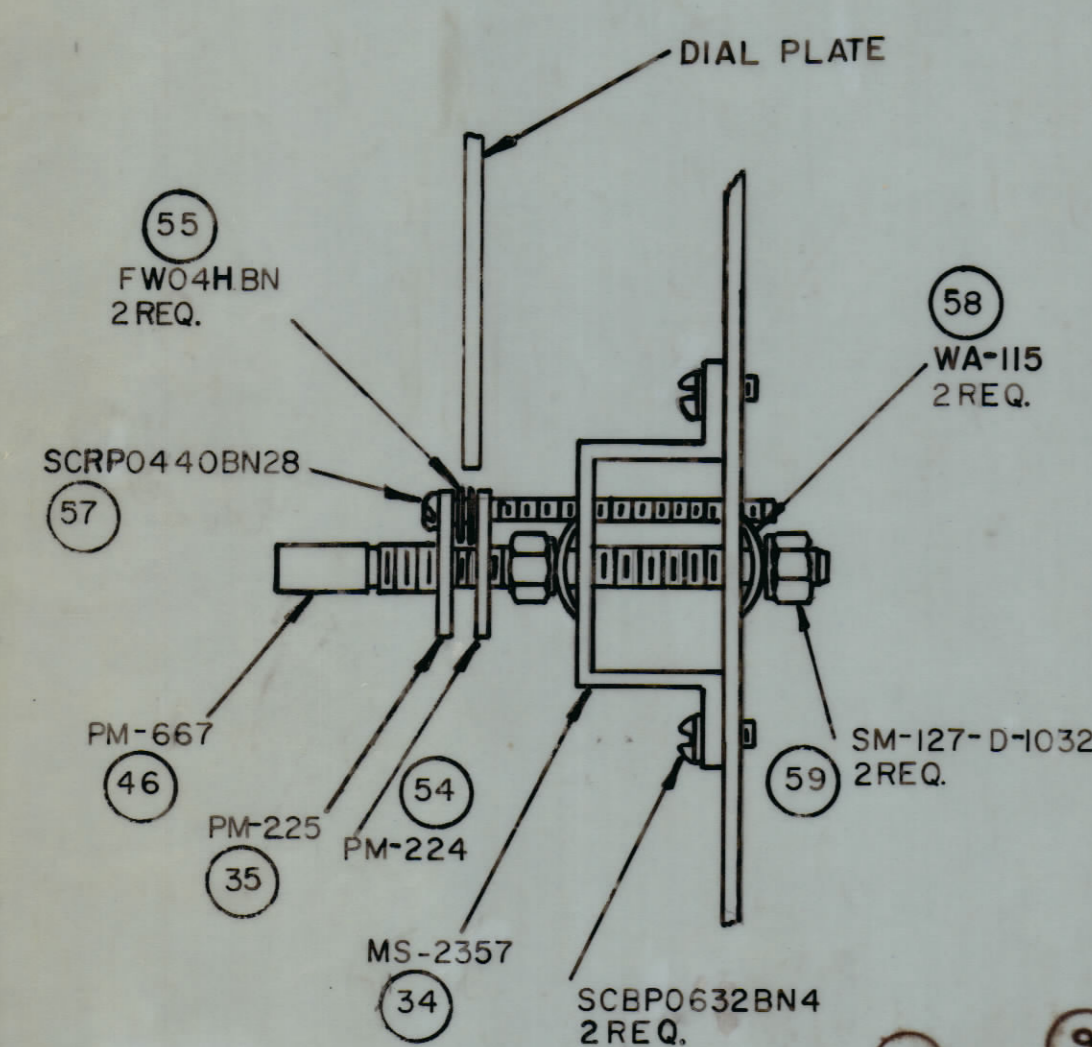
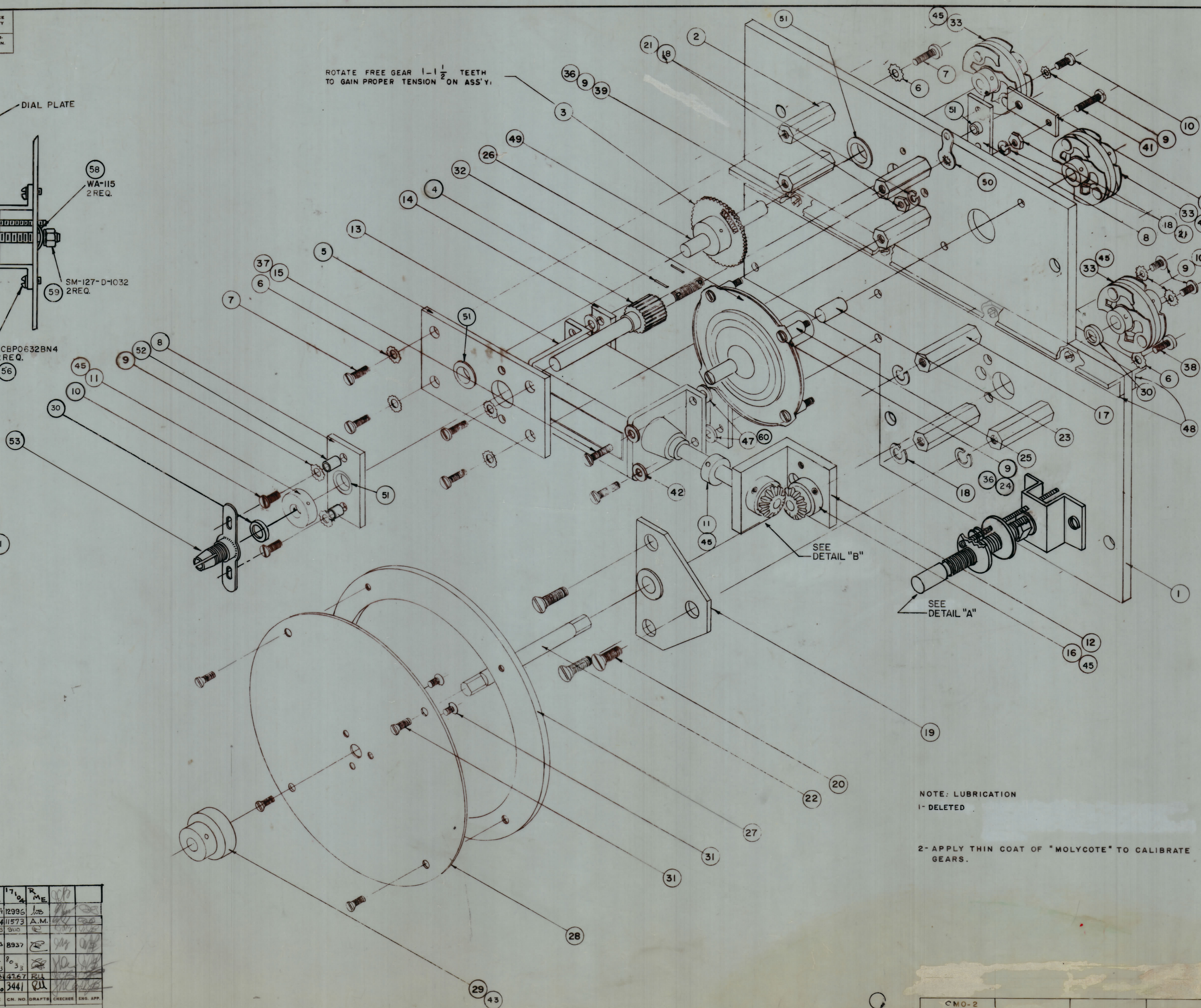


IF IT IS FOUND DESIRABLE TO CHANGE ANY TOLERANCE OR OTHER DETAIL SPECIFIED ON THIS DRAWING NOTIFY THE PURCHASER PROMPTLY.  
 MAXIMUM ALLOWABLE TOLERANCES HAVE BEEN DETERMINED AND DEVIATIONS WILL BE CAUSE FOR REJECTION. REMOVE ALL BURRS AND SHARP EDGES.

NOTE: ITEM 47 IS USED AS A SHIM. THE QUAN. REQ. WILL VARY DUE TO TOLERANCES ON THE METAL WORK.



ROTATE FREE GEAR 1-1/2 TEETH TO GAIN PROPER TENSION ON ASS'Y.



4	60	FWO6HBN	WASHER, FLAT
2	59	SM-127-D-1032	ELASTIC STOP NUT
2	58	WA-115	WASHER, SPRING TYPE
1	57	SCRPO440BN28	SCREW, MACHINE
2	56	SCBP0632BN4	SCREW, MACHINE
2	55	FWO4HBN	WASHER, FLAT
1	54	PM-224	PLATE, DIAL LOCKING
1	53	PM-181-NL	SHAFT, LOCK
1	52	TE-117-11	SPACER
6	51	BB-117-6	BEARING, NYLON
1	50	TE-104-2	TERMINAL, LOCKING

1	49	PM-691RF1.812A	SHAFT
2	48	PM-413	BRACE, MAIN GEAR PLATE
47	WA-108	WASHER, SHIM	
1	46	PM-667	SHAFT, DIAL LOCK
18	45	SLHC0632SP2	SCREW, HEADLESS SET
	44		DELETED
3	43	SLHC0832SP3	SCREW, HEADLESS SET
8	42	WA-109-36	WASHER, FIBER
1	41	SCRPO832BN18	SCREW, MACHINE
1	40	PM-317	STOP, CALIBRATE CONTROL
4	39	SCBP0632BN9	SCREW, MACHINE
3	38	SCBP0832BN8	SCREW, MACHINE
4	37	SM-127-D-632	NUT, LOCK
3	36	NTH0832BN10	NUT, HEX.
1	35	PM-225	PLATE, DIAL LOCKING
1	34	MS-2357	BRACKET, DIAL LOCK SUPPORT
3	33	PM-220	COUPLING, FLEXIBLE

2	32	PN-109-5	PIN, ROLL
7	31	SCFP0632BN4	SCREW, MACHINE
2	30	PM-321	SPACER, MAIN SHAFT
1	29	PM-308	BUSHING, DIAL
1	28	LD-193/MS548	PLATE, DIAL
1	27	PM-305	COUNTERBALANCE
1	26	PM-207	DRIVE, VERNIER (MODIFIED)
4	25	TE-135-2	SPACER
4	24	SCBP0632BN2	SCREW, MACHINE
1	23	PM691FD0.750A	SHAFT
1	22	PM-691FD3.000S	SHAFT, DIAL
2	21	NTH0832BN10	NUT, HEX.
3	20	SCFP0832BN6	SCREW, MACHINE
1	19	A-826	GEAR PLATE SUB ASS'Y
6	18	LWS08MRN	LOCKWASHER, SPLIT
3	17	TE0832AE66H	SPACER, GEAR HOUSING
2	16	A-939	GEAR, MITRE ASSEMBLY
4	15	SCBP0632BN11	SCREW, MACHINE
2	14	MS-549	SPACER, COUNTER
1	13	CY-104	COUNTER
1	12	PM-301	BRACKET, GEAR HOUSING
2	11	PM-316	COLLAR, CALIBRATE CONTROL
8	10	SCFP0632BN11	SCREW, MACHINE
4	9	LWE06MRN	LOCKWASHER, EXTERNAL
2	8	MS-2355	FLOAT, FRONT
8	7	SCBP0832BN8	SCREW, MACHINE
15	6	LWE08MRN	LOCKWASHER, EXTERNAL
1	5	MS-2356	CAL. GEAR PLATE
1	4	A-1982	CAL. SHAFT
1	3	GR-127	GEAR
4	2	TE0832AE65H	SPACER, CALIBRATE GEAR
1	1	MS-2354	PLATE, MAIN GEAR

NOTE: LUBRICATION  
 1- DELETED  
 2- APPLY THIN COAT OF "MOLYCOTE" TO CALIBRATE GEARS.

H	ADD MS 548 TO IT 28. QUOTE IT AS 1.5 P/N. IT 28 WAS 5110	11-3-66	1710	RME				
G	LUBRICATION NOTE #1 DELETED. ADD CALLOUT 66 ADDED	11-25-66	12996	LB				
F	ITEM 23 WAS PM 323	6/17/64	11573	A.M.				
E	ITEM 23 WAS TE0832AE51H	6-2-63	910					
D	ITEM 33 QUANTITY WAS 14. QUOTE WAS 3	5-7-63	8937					
D	ITEM 42 WAS QUAN 50. QUOTE 20							
D	HARDWARE CLARIFIED							
C	DETAIL "B" ADDED	1-23-63	8033					
B	ITEM 12 WAS A-827	2-18-61	4267	RL				
A	Item 50, Quantity was 10	11-16-60	3441	RL				
A	Detail "A" Added							
ISSUE	ITEM	CHANGED FROM	DATE	CN. NO.	DRAFTS	CHECKER	ENG. APP.	
TOLERANCES		SCALE:					DRILL PUNCH COMMERCIAL STOCK SIZES AND MANUFACTURERS' TOLERANCES ARE NOT INCLUDED.	
ALL OTHERS	DEC. DIM. ±							
	FRAC. DIM. ±							
	ANGULAR DIM. ±							

CMO-2	PROJECT NO.	10-31-60
CMO-1	ASSY. NO.	
MODEL	USED ON	

THE TECHNICAL MATERIEL CORP.	NEW YORK	
MAMARONECK, N.Y.		
MECHANICAL SUB ASS'Y.		
MAIN GEAR PLATE		
STOCK SIZE		
MATERIAL	WEIGHT PER PC.	
TYPE & TEMPER		
HEAT TREAT SPEC.		
FINISH & DIM. NO.		
DRAWN	ELEC. DES. APP.	MECH. DES. APP.
CHECKED	FINAL APPROVAL	
A-2009 H		