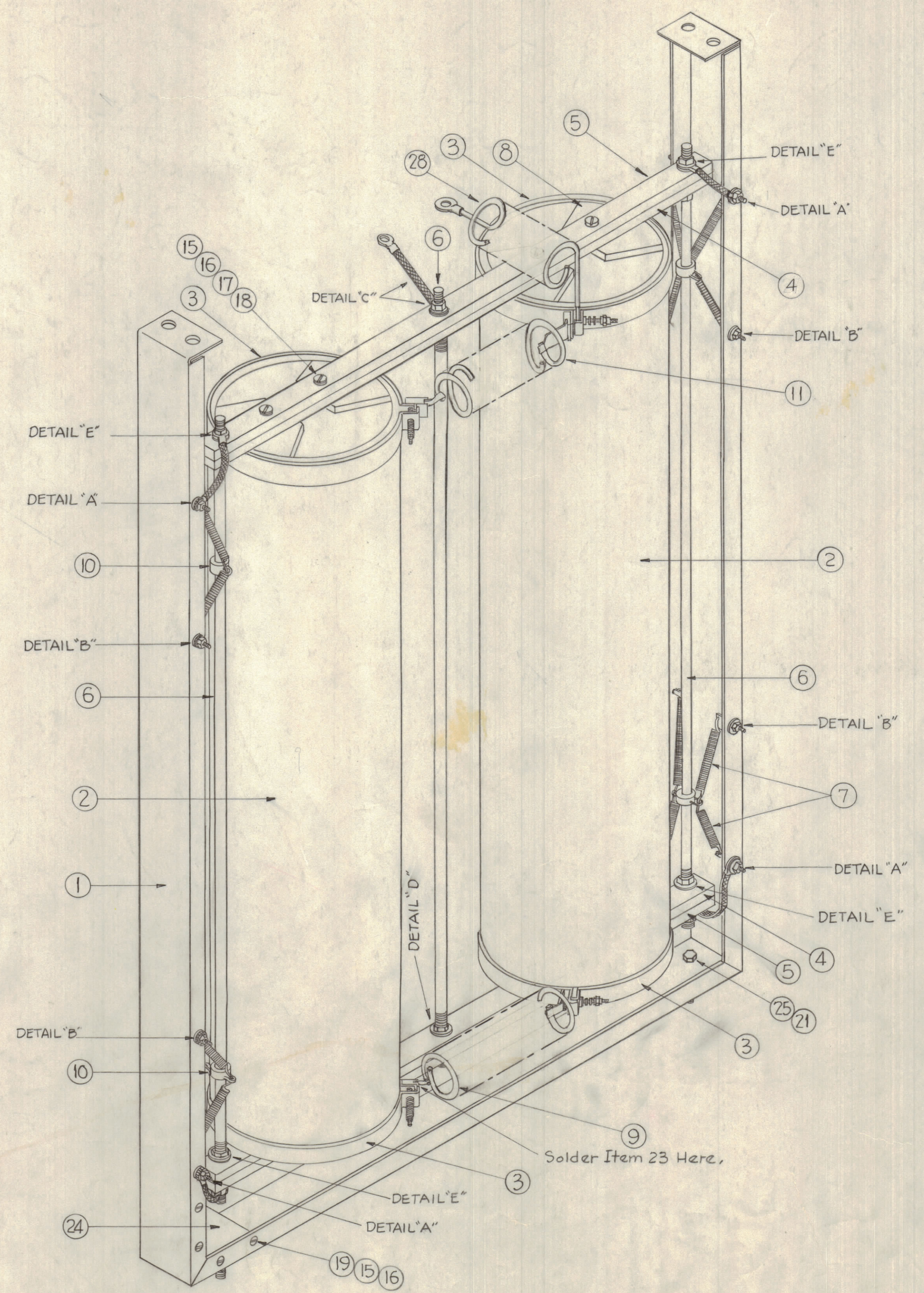
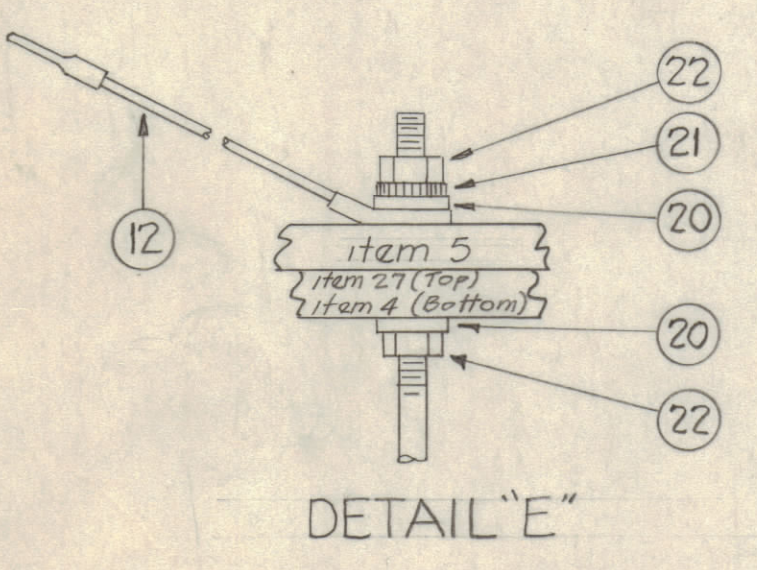
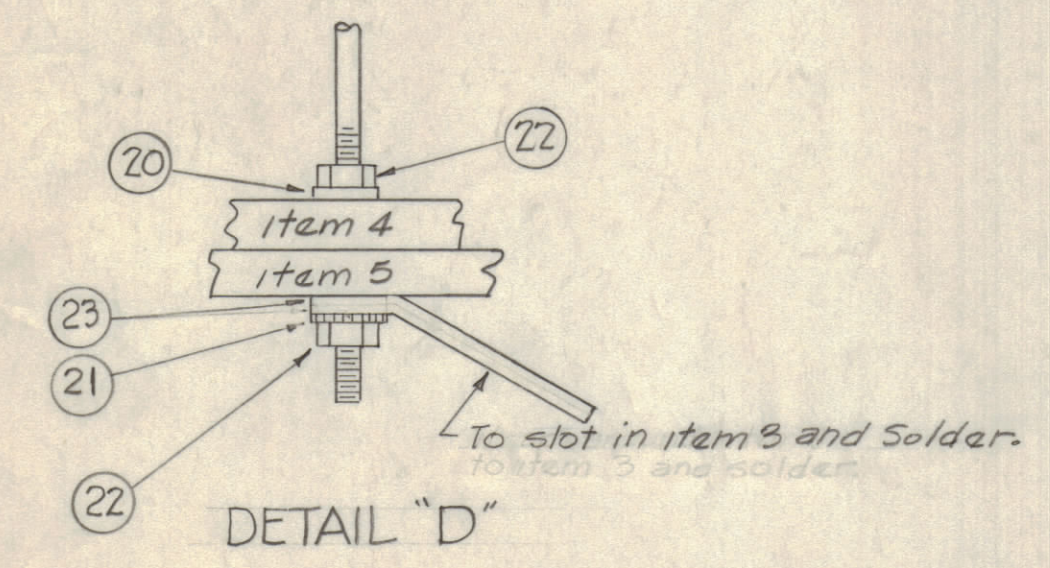
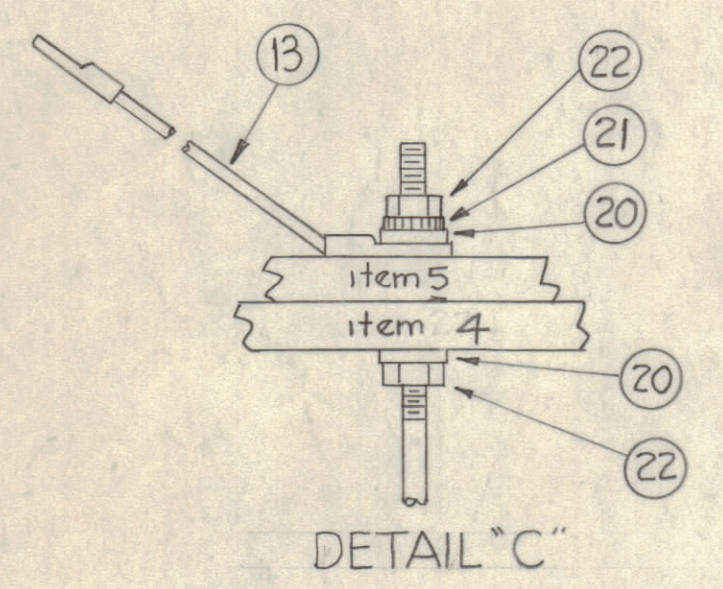
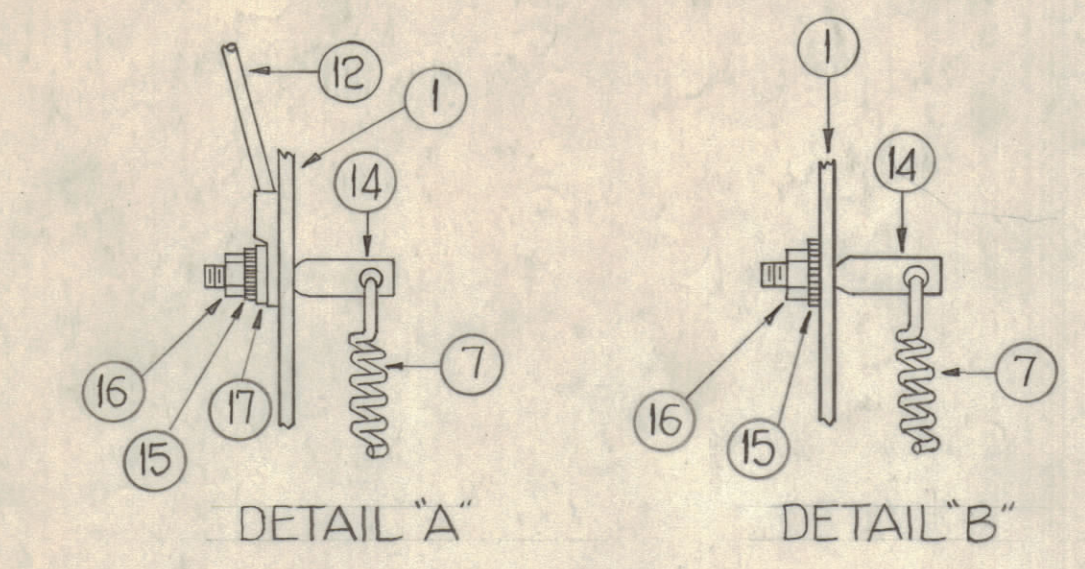


NOTICE TO PERSONS RECEIVING THIS DRAWING  
 THE TECHNICAL MATERIEL CORPORATION claims proprietary right in the material disclosed hereon. This drawing is issued in confidence for engineering information only and may not be reproduced or used to manufacture anything shown hereon without permission from THE TECHNICAL MATERIEL CORPORATION to the user. This drawing is loaned for mutual assistance and is subject to recall at any time.  
 Property of:  
 THE TECHNICAL MATERIEL CORPORATION  
 MAMARONECK, NEW YORK



REQ. ITEM	PART NO.	DESCRIPTION	SYMBOL
1	28	CL-268	COIL, COMPANSATING
	27	DELETED	TOP SUPPORT
X	26	BS-100	SOLDER, SOFT
2	25	SCHH2520BN12	SCREW, HEX HEAD
Z	24	MS-766	GUSSET, RESISTOR SUPPORT
1	23	MS-202-4-4.50	LEAD, ELECTRICAL
12	22	NTH2528BN14	NUT, HEX.
8	21	LWE25MRN	LOCKWASHER, EXT.
11	20	FW254BN	WASHER, FLAT
8	19	SCFP0632BN6	SCREW, MACHINE
8	18	SCFS0632BN6	SCREW, MACHINE
12	17	FW06HBN	WASHER, FLAT
32	16	NTH0632BN10	NUT, HEX.
32	15	LWE06MRN	LOCKWASHER, EXT.
16	14	SC-106-1	BOLT, SPADE, STRAIGHT
1	13	CA409-69-4.50	LEAD, ELECTRICAL
4	12	CA409-100-2.75	LEAD, ELECTRICAL
1	11	CL-267	COIL, COMPANSATING
4	10	MC-105-2	COUPLING, FIXED
1	9	CL-266	COIL, COMPANSATING
8	8	PX-314	SUPPORT, RESISTOR
16	7	SP-124	SPRING, EXTENSION
3	6	PM-373-1	ROD, SUPPORT (20 1/4 Lg)
2	5	PM-374	SUPPORT, RESISTOR
2	4	PX-315	INSULATOR, BOTTOM
4	3	A-1144	STRAP, ASS'Y.
2	2	RR-117-600	RESISTOR, FIXED, 900 Watts
1	1	MS-745	MAIN SUPPORT, RESISTOR

SYM	ZONE	DESCRIPTION	DATE	CH. NO.	DRAFTS	CHECKER	ENG. APP.
C		IT. 4 QTY WAS 1, IT 27 PYS 26-1	1/16/65	15206	F.V.I.		
B	B2	DELE. IT. 4 QTY WAS 27 (2 PL3)	1/14/65	14789	H.V.V.		
A	A2	IT 12 WAS 4 IN 23 AD 2. 75, IT 13 WAS 1.42322450 IT 19 QTY 2	4-25-62	6629	E.F.		
		ITEM 10 WAS MS-1157					

UNLESS OTHERWISE SPECIFIED:  
 DIMENSIONS ARE IN INCHES  
 TOLERANCES ON  
 FRACTIONS ± 1/64    DECIMALS ± .005    ANGLES ± 1/2°

SCALE  
 MAXIMUM ALLOWABLE TOLERANCES HAVE BEEN DETERMINED AND ANY DEVIATIONS WILL BE CAUSE FOR REJECTION. REMOVE ALL BURRS & SHARP EDGES

REQ. PER UNIT	MODEL	SECTION	ASSY. NO.	DATE	TYPE & TEMPER	HEAT TREAT. SPEC.	FINISH & SPEC. NO.	ELEC. DES. APP.	MECH. DES. APP.	SHEET	OF
1	TER-3500-300			2-9-61						22	A-2053

A-2053 C