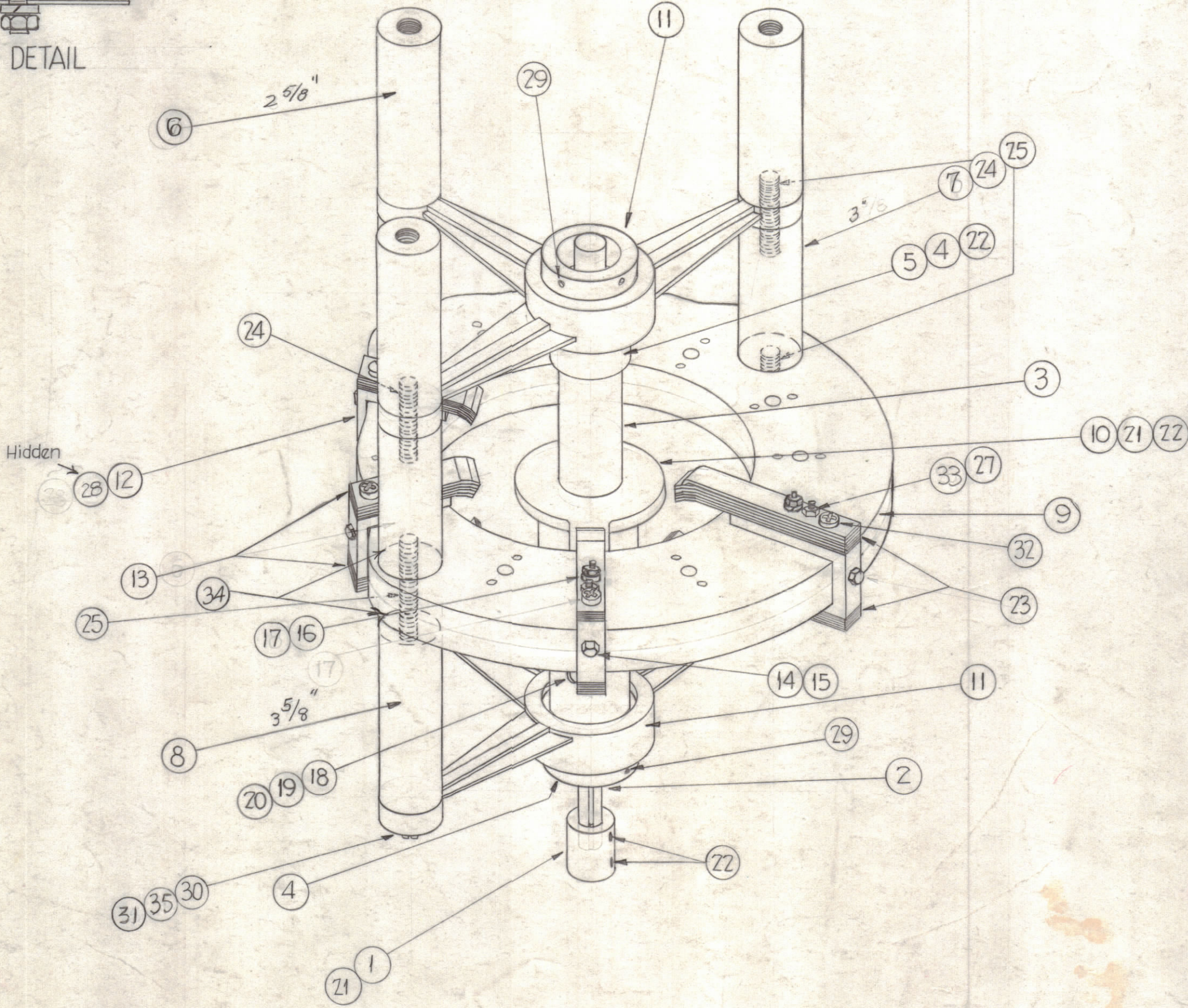
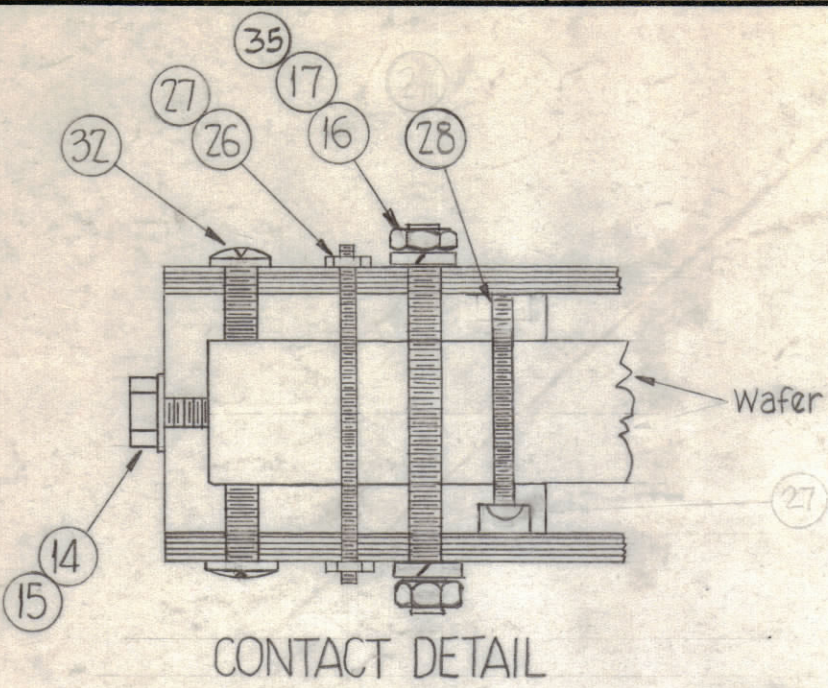


NOTICE TO PERSONS RECEIVING THIS DRAWING

THE TECHNICAL MATERIEL CORPORATION claims proprietary right in the material disclosed hereon. This drawing is issued in confidence for engineering information only and may not be reproduced or used to manufacture anything shown hereon without permission from THE TECHNICAL MATERIEL CORPORATION to the user. This drawing is loaned for mutual assistance and is subject to recall at any time.

Property of:  
THE TECHNICAL MATERIEL CORPORATION  
MAMARONECK, NEW YORK



11	35	LWS10MRN	WASHER, LOCK, SPLIT	
15	34	WA-109-55	WASHER, FIBRE	
1	33	SM0348BP1.625	ROD, THREADED	
8	32	SCBP1032BN6	Screw, Machine	
3	31	FW104BN	WASHER, FLAT +	
3	30	SCBP1024BN16	Screw Machine	
4	29	SLHC0632SP4	Set, Screw 6-32 x 1/4 Long	
4	28	SCRPO348BN16	SCREW, MACHINE	
8	27	NTH0348BN6	Nut, Hex	
3	26	SM-0348BP1.500	Rod, Threaded	
3	25	SM-1024 BP-1.875	Rod, Threaded	
3	24	SM-1024 BP-1.625	Rod, Threaded	
1	23	AX-128	Contact Set, Electrical, Long	E916
8	22	SLHC1032SS4	Set Screw	
2	21	KY-10Z-2-1.2555	Key, Square 1/8 x 1/8	
1	20	NTH032BN10	Nut, Hex.	
1	19	LWE08MRN	Washer, Lock, Ext.	
1	18	SCBP0832SSZ4	Screw, Machine	
4	17	SM1032BP1.937	Rod, Threaded, 10-32 x 1 5/16	
8	16	NTH1032BN10	Nut, Hex	
4	15	LWS25MRN	Washer, Lock, Split	
4	14	SCHH2520BN8	Bolt, Machine, Hex Head	
3	13	AX-129 (A1701)	Contact Set, Electrical, Short	E917, 918, 919
4	12	PM-570	Bar, Contact	
2	11	PO-176	Bracket, "T"	
1	10	PM-634	Rotor, Switch, Mode Selector	
1	9	WS-105-2	Wafer, Ceramic	
3	8	PX-540-3	Spacer, RF Bandswitch, Bottom	
3	7	PX-540-2	" " " " " , Top CENTER	
3	6	PX-540-1	Spacer, RF Bandswitch, TOP	
1	5	PM-538	Holder, Shaft	
2	4	BB-120-3	Bearing, Race	
1	3	PX-545	Shaft, Main	
1	2	PM-637	Shaft, Bearing	
1	1	PM-638	Coupling, Shaft, Rigid	

L	B/M REVISED	1-25-67	17742	RME	QC	QC
K	ITEMS (6) & (7) TITLES CLARIFIED DIM. 2 5/8 & 3 WERE 3 & 2 5/8	4-25-66	16141	LFW	QC	QC
J	ITEM (28) WAS SMO348BP 1.125 ITEM (27) QTY. WAS 16	3-3-66	15881	GDL	QC	QC
H	ITEM (3) WAS SMO348BP 1.625 IT. 16 WAS 8 REQ SMI27D1032, IT. 35 ADD.	9-3-64	12230	hob	@	QB
G	EXTEN. CHG. SEE EMN # 10891	2-14-64	10891	A.M.	TR	QB
F	ITEM (4) WAS BB-120	6-19-63	9323			
E	ITEM (9) WAS WS-105, 2 REQ	5-21-63	9029			
D	SCREWS WERE SLOTTED HEADS	9-7-63	8393	TC	710	
C	ITEM (33) ADDED; ITEM (26) WAS 4 REQ.	12-3-62	7747			
B	Item (23) Was SLHC1032SS4; Item (24) Was SMI032BP-1.625	1-22-62	6227	S.H.		
E3	Item 27 Was NTH040BN6; Item 28 Was SMO440BP1.12					
E3	Item 25 Was SMI024BP-2.12; Item 26 Was SMO440BP1.50	12-26-61	6096	G.I.	QC	QC
D3	Item 17 Was SMI032BP1.937; Item 24 Was SMI024-BP1.62					

SYM	ZONE	DESCRIPTION	DATE	CH. NO.	DRAFTS	CHECKER	ENG. APP.
UNLESS OTHERWISE SPECIFIED:							
DIMENSIONS ARE IN INCHES							
TOLERANCES ON							
FRACTIONS ± 1/64      DECIMALS ± .005      ANGLES ± 1/2°							
MAXIMUM ALLOWABLE TOLERANCES HAVE BEEN DETERMINED AND ANY DEVIATIONS WILL BE CAUSE FOR REJECTION. REMOVE ALL BURRS & SHARP EDGES							

REQ. PER UNIT	MODEL	SECTION	ASS'Y. NO.	DATE
	GPT-40K		AS117	3-2-61
USED ON				

REQ. ITEM	PART NO.	DESCRIPTION	SYMBOL
THE TECHNICAL MATERIEL CORP. MAMARONECK, NEW YORK			
AS-117, SWITCH ASS'Y. (10K RF OUTPUT)			
MATERIAL			
TYPE & TEMPER      HEAT TREAT. SPEC.			
FINISH & SPEC. NO.			
DRAWN		CHECKED	
ELEC. DES. APP.		MECH. DES. APP.	
		FINAL APPROVAL	
SHEET OF			L