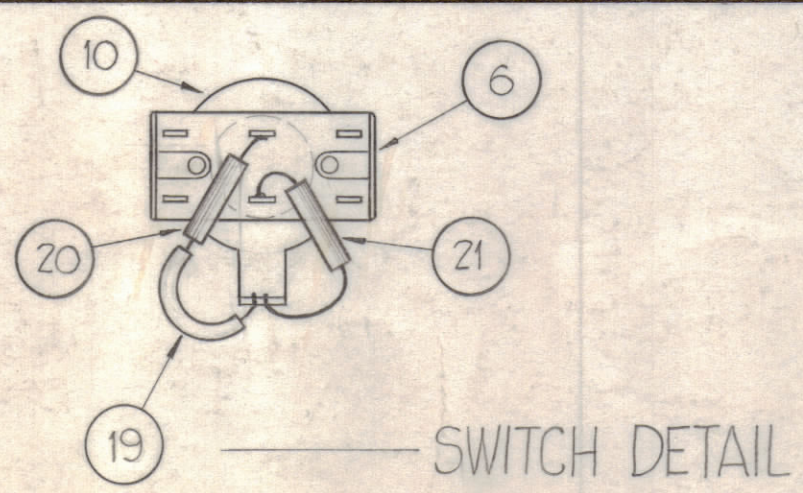


| | | | | |
|----|----|-----------------|-------------------------------|------------------|
| X | 26 | BS-100 | SOLDER, SOFT | |
| 3" | 25 | MWC 22 (7) U96 | CABLE, INSULATED | White Blue |
| 3" | 24 | | | BLUE |
| 3" | 23 | | | YELLOW |
| 3" | 22 | MWC 22 (7) U3 | CABLE, INSULATED | ORANGE |
| 1 | 21 | RC20GF474J | RESISTOR, FIXED | R117 |
| 1 | 20 | CM15F151G03 | CAPACITOR, FIXED | C122 |
| 1" | 19 | PX-104-1-034 | INSULATION, SLEEVING | |
| X | 18 | PX-104-1-022 | INSULATION, SLEEVING | |
| X | 17 | WL-100-7 | WIRE, BUSS BAR (22 GA.) | |
| 4 | 16 | NTH0440BN8 | NUT, HEXAGON, DOUBLE CHAMFER | |
| 2 | 15 | WA-109-17 | WASHER, FIBER | |
| 1 | 14 | LWI 50L RN | LOCKWASHER, INTERNAL TOOTH | |
| 6 | 13 | LW504 MRN | LOCKWASHER, SPLIT | |
| 2 | 12 | 5CBPO440BN7 | SCREW, MACHINE | |
| 6 | 11 | 5CBPO440BN4 | SCREW, MACHINE | |
| 1 | 10 | TE-129 | LUG, GROUND | |
| 2 | 9 | TE-104-1 | TERMINAL, LOCKING | |
| 2 | 8 | FP-109 | CLAMP, CRYSTAL | |
| 2 | 7 | TS-104-1 | SOCKET, CRYSTAL | XY-101 XY-102 |
| 1 | 6 | ST-22N | SWITCH, TOGGLE | 5105 |
| 1 | 5 | JJ-034 | JACK, PHONE | J106 |
| 1 | 4 | MS-3102A-165-15 | CONNECTOR, FEMALE | J101 |
| 1 | 3 | MS-295 | COVER, PLUG, P.S. | |
| 1 | 2 | LD-379 (MS-299) | STAMPING, BFO CRYSTAL BRACKET | |
| 1 | 1 | LD-378 (MS-296) | STAMPING, PLUG BRACKET | |



| | | | | |
|---------------|---------|---------|------------|---------|
| 1 | VOX-5,6 | | A-2045 | |
| 1 | VOX-3,4 | | A-626 | |
| REQ. PER UNIT | MODEL | SECTION | ASS'Y. NO. | DATE |
| | | | | USED ON |

| | | | | | | | |
|--------------------------------|------|---|--|---------|---------------|---------|-----------|
| D | | BUILD/UP CLARIFIED (IT. 18 THRU 21) | 2.13.67 | 17810 | LMO | RS | |
| C | C-2 | ITEMS 11 & 12 WERE SLOTTED; ITEM 14 WAS LW50MRN; J101 ADDED | 6-21-62 | 6470 | SRG | | |
| B | F3 | ITEMS 20 & 21 RELOCATED; SWITCH DETAIL ADDED (PICTORIAL) | 2-2-62 | 6250 | JL | | |
| A | G-34 | WIRE No (17) DELETED | 7-3-61 | 5173 | D.L.G. | RD | JM |
| SYM | ZONE | DESCRIPTION | DATE | CH. NO. | DRAFTS | CHECKER | ENG. APP. |
| UNLESS OTHERWISE SPECIFIED: | | | SCALE - DO NOT SCALE | | | | |
| DIMENSIONS ARE IN INCHES | | | MAXIMUM ALLOWABLE TOLERANCES HAVE BEEN DETERMINED AND ANY DEVIATIONS WILL BE CAUSE FOR REJECTION. REMOVE ALL BURRS & SHARP EDGES | | | | |
| TOLERANCES ON FRACTIONS ± 1/64 | | | DECIMALS ± .005 | | ANGLES ± 1/2° | | |

| | | | |
|--|----------|-------------------|-----------------|
| REQ. ITEM | PART NO. | DESCRIPTION | SYMBOL |
| THE TECHNICAL MATERIEL CORP. MAMARONECK, NEW YORK | | | |
| ASSEMBLY, CRYSTAL SWITCH | | | |
| MATERIAL | | John C. Biele | |
| TYPE & TEMPER | | HEAT TREAT. SPEC. | |
| FINISH & SPEC. NO. | | ELEC. DES. APP. | MECH. DES. APP. |
| | | SHEET | OF |
| | | A-2091 D | |