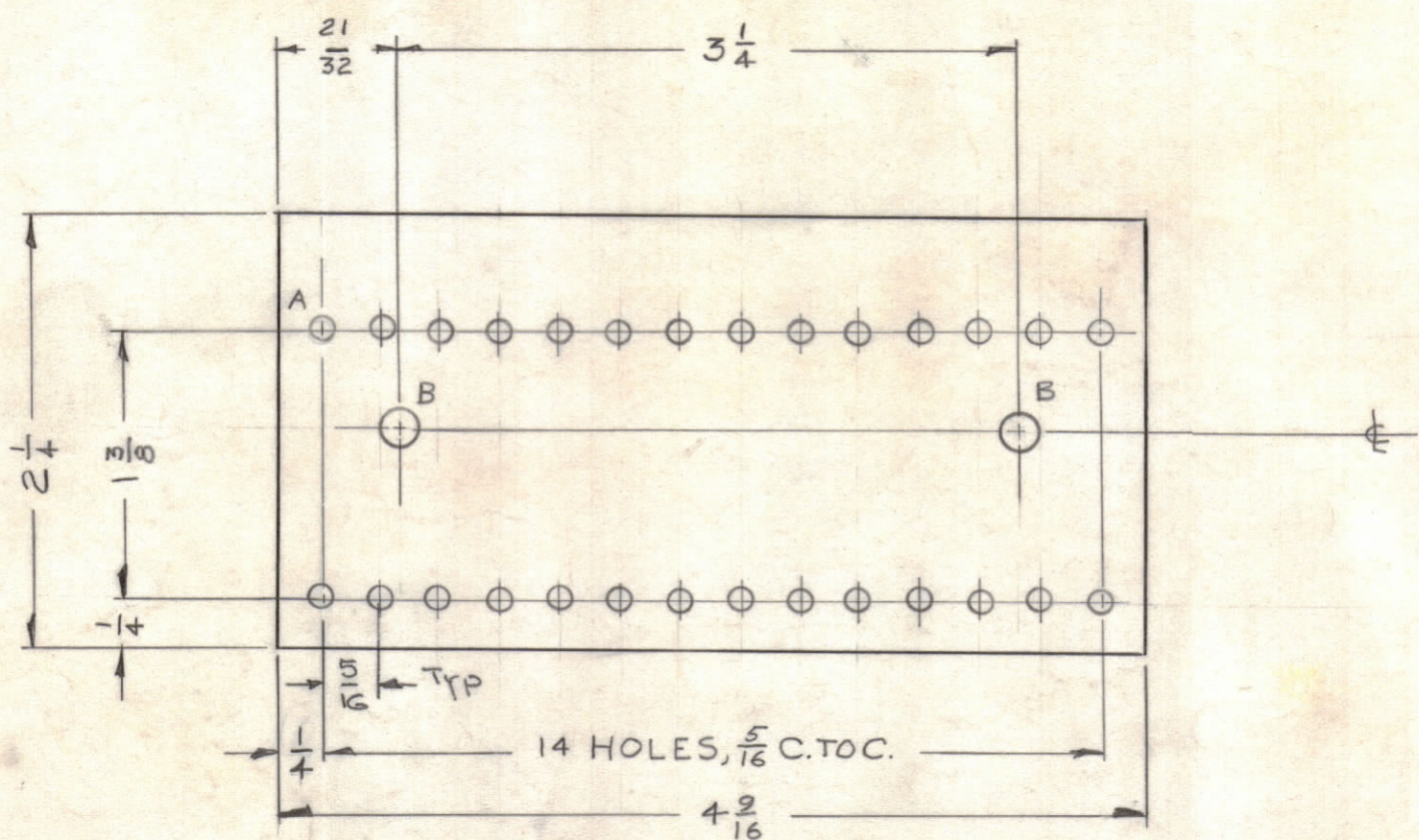
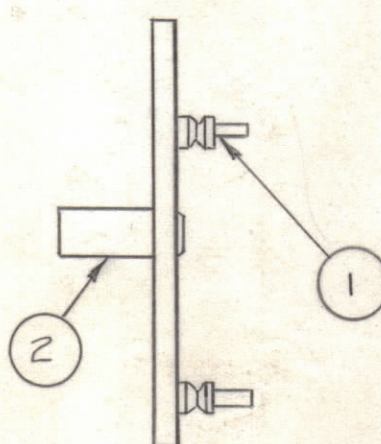


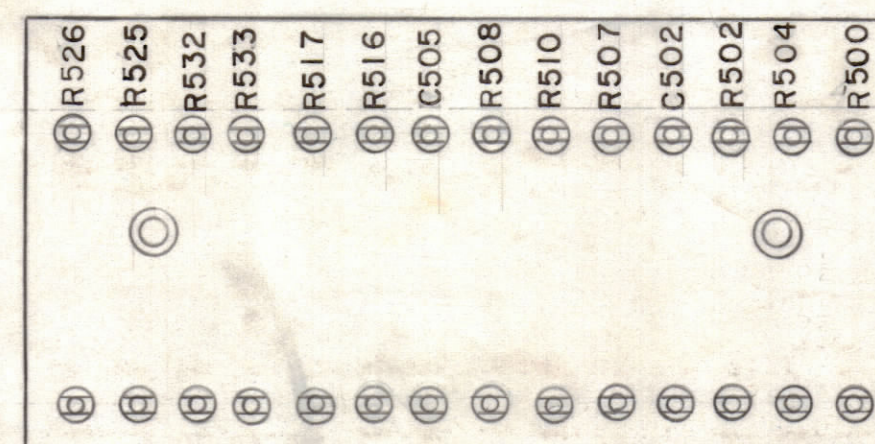
A- NO. 33 DR. (.113D.) 28 REQD.
 B- NO. 12 DR. (.189D.) 2 REQD.



STAGE 1. MACHINING
A-1641-1

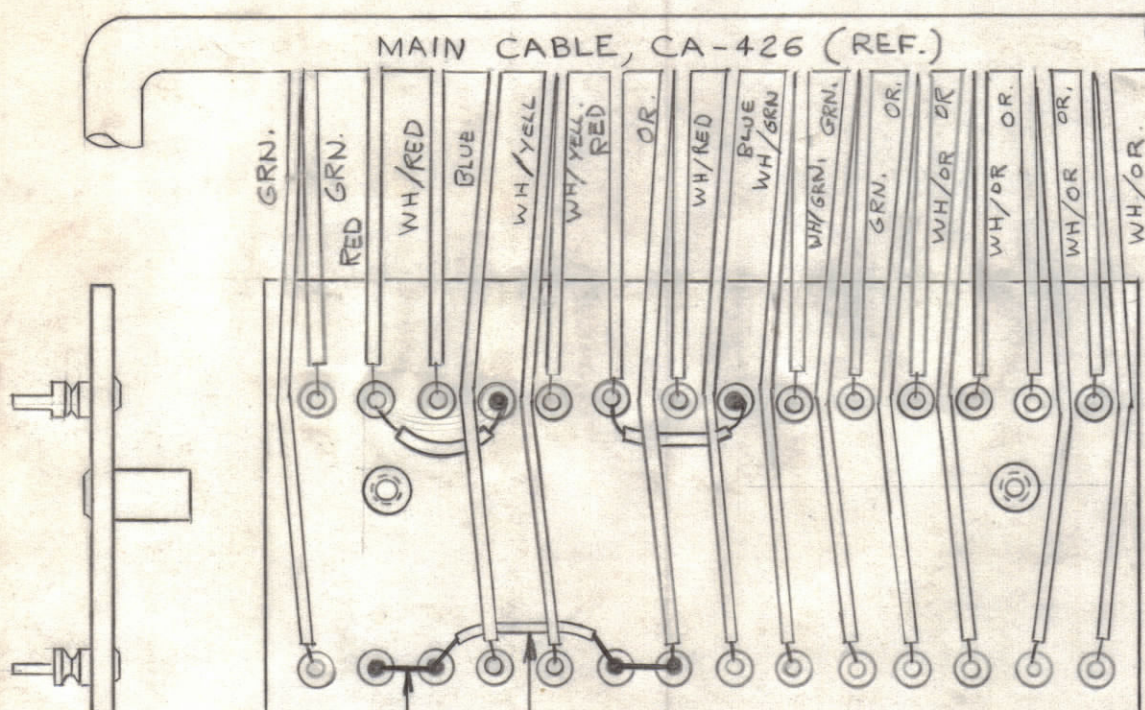
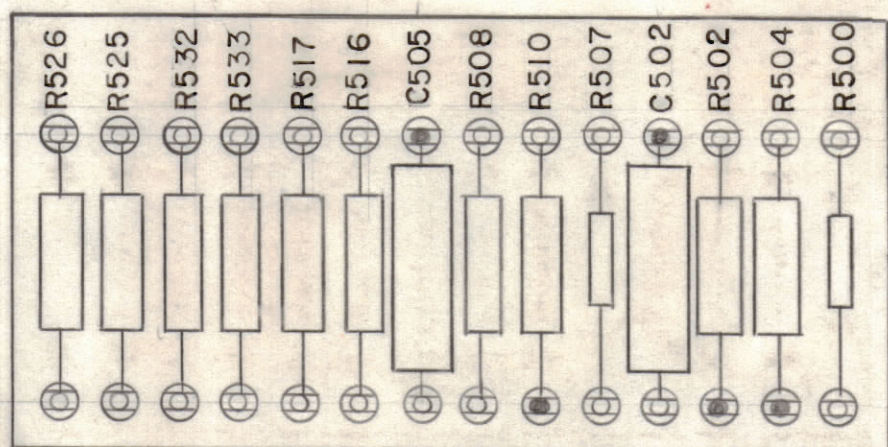


STAGE 3 MECH. ASS'Y.
A-1641-3



MARKING PROCESS: AS PER TMC SPECIFICATION S-727
 ALL LETTERING TO BE 1/8 HIGH BLACK GOTHIC.
 VARNISH, FUNGUS RESISTANT.

STAGE 2 LETTERING
A-1641-2



NOTE: CABLE (CA-426) SHOWN FOR REF. ONLY.
 SOLDER ALL CONNECTIONS INDICATED BY
 BLACKENED TERMINALS.
 ALL OTHER CONNECTIONS (FROM CABLE) TO
 BE SOLDERED UPON ASS'Y. OF TERMINAL BOARD
 INTO UNIT.

10 ALL BARE JUMPERS
 11 ALL INSULATED JUMPERS

STAGE 4 ELECTRICAL ASS'Y.
A-1641-4

REQ. ITEM	PART NO.	DESCRIPTION	SYMBOL
X 12	BS-100	SOLDER, SOFT	
X 11	MWC 22(1) UO	WIRE, INSULATED (SIZE 22)	BLK.
X 10	WL-100-7	WIRE, BUSS (SIZE 22)	
2 9	RC32GF683K	RESISTOR, FIXED, COMP.	R508 R502
2 8	RC32GF472K		R526 R525 R517 R516
2 7	RC32GF471K		
3 6	RC32GF223K		
1 5	RC32GF103K		R510
2 4	RC20GF152K	RESISTOR, FIXED, COMP.	R507 R500
2 3	CN-100-1	CAPACITOR, FIXED PAPER .01	C505 C502
2 2	TE-108-13	STANDOFF, RIVET TYPE	
28 1	TE-109-3	TERMINAL	

R533
R532
R504

SYM	ZONE	DESCRIPTION	DATE	CH. NO.	DRAFTS	CHECKER	ENG. APP.
A	B, Z	Item Was TE-109-5	11-15-61	5887			

UNLESS OTHERWISE SPECIFIED:
 DIMENSIONS ARE IN INCHES
 TOLERANCES ON
 FRACTIONS ± 1/64 DECIMALS ± .005 ANGLES ± 1/2°

MAXIMUM ALLOWABLE TOLERANCES HAVE BEEN DETERMINED AND ANY DEVIATIONS WILL BE CAUSE FOR REJECTION. REMOVE ALL BURRS & SHARP EDGES

REQ. PER UNIT	MODEL	SECTION	ASS'Y. NO.	DATE
1	TTG-2	GPT-10K		

REQ. ITEM	PART NO.	DESCRIPTION	SYMBOL
1/8 THICK			
STOCK SIZE			
PHENOLIC			
MATERIAL			
XXXP L'M'NATE			
TYPE & TEMPER			
HEAT TREAT. SPEC.			
NATURAL			
FINISH & SPEC. NO.			

THE TECHNICAL MATERIEL CORP.
 MAMARONECK, NEW YORK

MAIN TERMINAL BOARD,
 ALL STAGES (TTG-2)

R. Lopez
 11-30-61

ab

DRAWN CHECKED FINAL APPROVAL

A-2108

ELEC. DES. APP. MECH. DES. APP. SHEET OF