

IF IT IS FOUND DESIRABLE TO CHANGE ANY TOLERANCE OR OTHER DETAIL SPECIFIED ON THIS DRAWING NOTIFY THE PURCHASER PROMPTLY.  
 MAXIMUM ALLOWABLE TOLERANCES HAVE BEEN DETERMINED AND DEVIATIONS WILL BE CAUSE FOR REJECTION.  
 REMOVE ALL BURRS AND SHARP EDGES

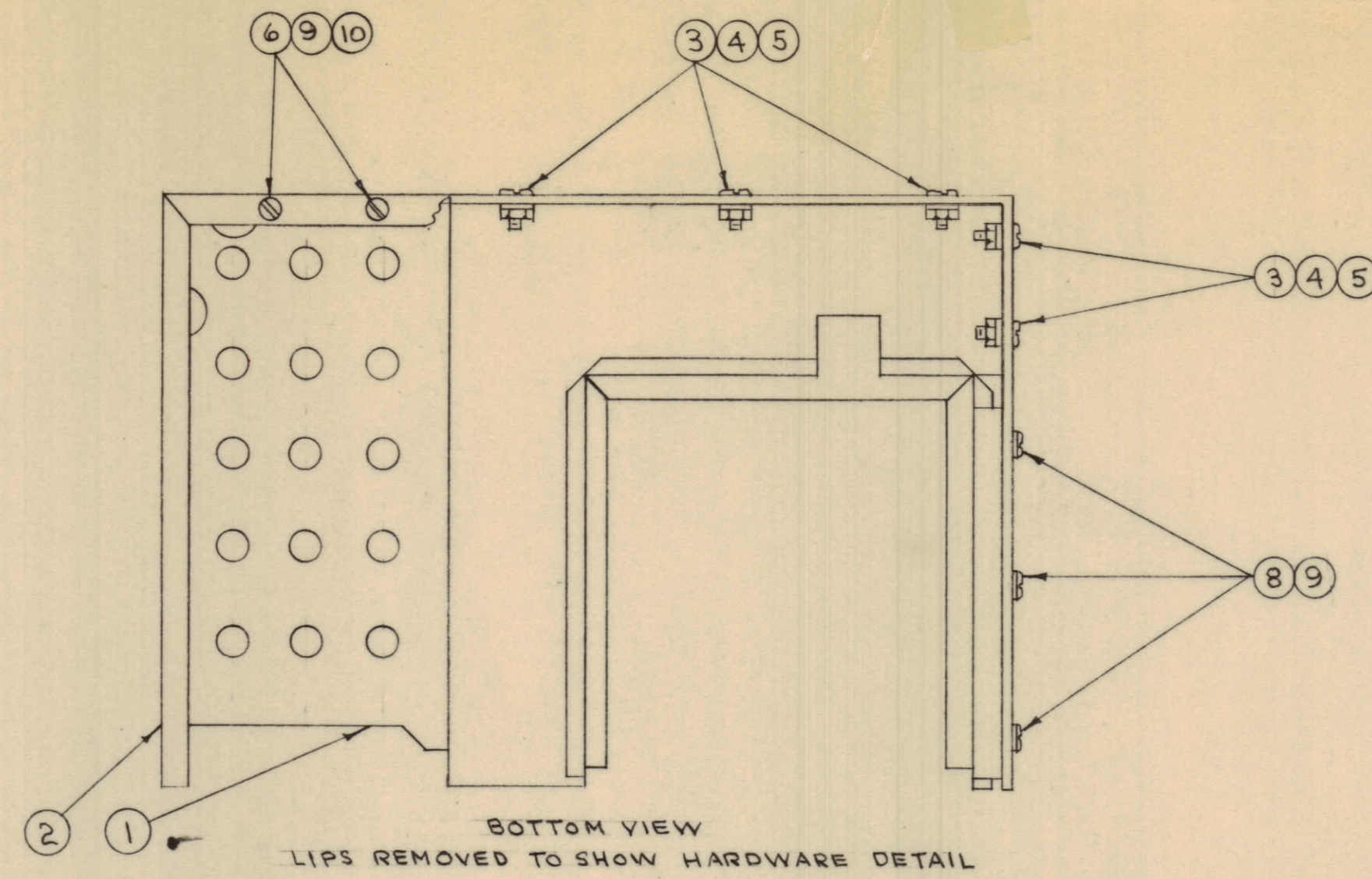
RELEASED

NOTICE TO PERSONS RECEIVING THIS DRAWING

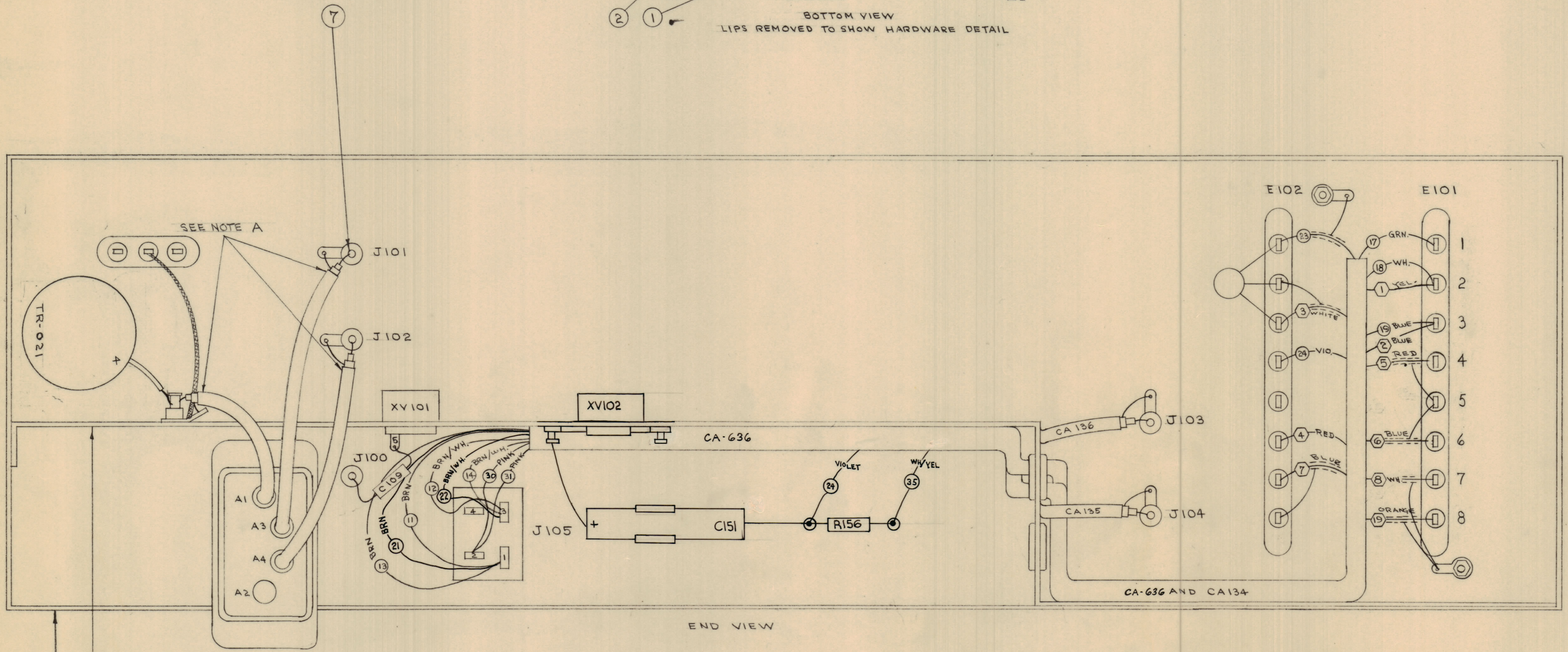
THE TECHNICAL MATERIEL CORPORATION claims proprietary right in the material disclosed herein. This drawing is issued in confidence for engineering information only and may not be reproduced or used to manufacture anything shown hereon without permission from THE TECHNICAL MATERIEL CORPORATION to the user. This drawing is loaned for mutual assistance and is subject to recall at any time.

Property of:  
 THE TECHNICAL MATERIEL CORPORATION  
 MAMARONECK, NEW YORK

NOTE A - BRING SHIELDING AND CABLE INSULATION AS CLOSE TO TERMINALS AS POSSIBLE.



ALL WIRED TERMINALS



THIS DRAWING SHOWS ONLY THAT HARDWARE OR THOSE COMPONENTS NECESSARY TO CONNECT ITEM 1 TO ITEM 2

WIRE NO'S. 1-35 IN THIS DRAWING CORRESPOND TO ITEM NO'S. IN CA-636  
 WIRE NO'S. 36-38 IN THIS DRAWING CORRESPOND TO ITEM NO'S. IN CA-134

A-2144

ISSUE	ITEM	CHANGED FROM	DATE	CH. NO.	DRAFTS	CHECKER	ENG. APP.
A	1	ITEM 2 WAS A-2145	9-29-61	5602	16	MD	LG
TOLERANCES		SCALE: 1/8"					
ALL OTHERS	DEC. DIM. ±	DRILL PUNCH, COMMERCIAL STOCK SIZES AND MANUFACTURERS TOLERANCES ARE NOT INCLUDED.					
	FRAC. DIM. ±						
	ANGULAR DIM. ±						

MODEL	PROJECT NO.	ASSY. NO.	DATE
FFR-35			8-19-61
USED ON			

REQ. ITEM	PART NO.	DESCRIPTION	SYMBOL																												
3	10	NTH0632BN8	NUT, HEX.																												
3	9	LWS06MRN	LOCKWASHER, SPLIT																												
3	8	SCBS0632BNS	SCREW, MACHINE																												
X	7	BS-100	SOLDER, SOFT																												
2	6	SCFS0632BNS	SCREW, MACHINE																												
7	5	NTH0832BN10	NUT, HEX																												
7	4	LWS08MRN	LOCKWASHER, SPLIT																												
5	3	SCBS0832BNS	SCREW, MACHINE																												
1	2	A-2181	CHASSIS FRAME JUMPER WIRE ASSY.																												
1	1	A-2144	CENTER CHASSIS & PAN ASSY.																												
<table border="1"> <tr> <td>REG. ITEM</td> <td>PART NO.</td> <td>DESCRIPTION</td> <td>SYMBOL</td> </tr> <tr> <td>#</td> <td>#</td> <td>THE TECHNICAL MATERIEL CORP. MAMARONECK, NEW YORK</td> <td></td> </tr> <tr> <td>STOCK SIZE</td> <td>#</td> <td>CENTER CHASSIS AND CHASSIS FRAME ASSEMBLY</td> <td></td> </tr> <tr> <td>MATERIAL</td> <td>WEIGHT PER PC.</td> <td>R. TURCHIN</td> <td></td> </tr> <tr> <td>TYPE &amp; TEMPER</td> <td></td> <td>DRAWN</td> <td>ELEC. DES. APP. MECH. DES. APP.</td> </tr> <tr> <td>HEAT TREAT. SPEC.</td> <td></td> <td>CHECKED</td> <td>FINAL APPROVAL</td> </tr> <tr> <td>FINISH &amp; SPEC. NO.</td> <td></td> <td></td> <td>A-2144</td> </tr> </table>				REG. ITEM	PART NO.	DESCRIPTION	SYMBOL	#	#	THE TECHNICAL MATERIEL CORP. MAMARONECK, NEW YORK		STOCK SIZE	#	CENTER CHASSIS AND CHASSIS FRAME ASSEMBLY		MATERIAL	WEIGHT PER PC.	R. TURCHIN		TYPE & TEMPER		DRAWN	ELEC. DES. APP. MECH. DES. APP.	HEAT TREAT. SPEC.		CHECKED	FINAL APPROVAL	FINISH & SPEC. NO.			A-2144
REG. ITEM	PART NO.	DESCRIPTION	SYMBOL																												
#	#	THE TECHNICAL MATERIEL CORP. MAMARONECK, NEW YORK																													
STOCK SIZE	#	CENTER CHASSIS AND CHASSIS FRAME ASSEMBLY																													
MATERIAL	WEIGHT PER PC.	R. TURCHIN																													
TYPE & TEMPER		DRAWN	ELEC. DES. APP. MECH. DES. APP.																												
HEAT TREAT. SPEC.		CHECKED	FINAL APPROVAL																												
FINISH & SPEC. NO.			A-2144																												