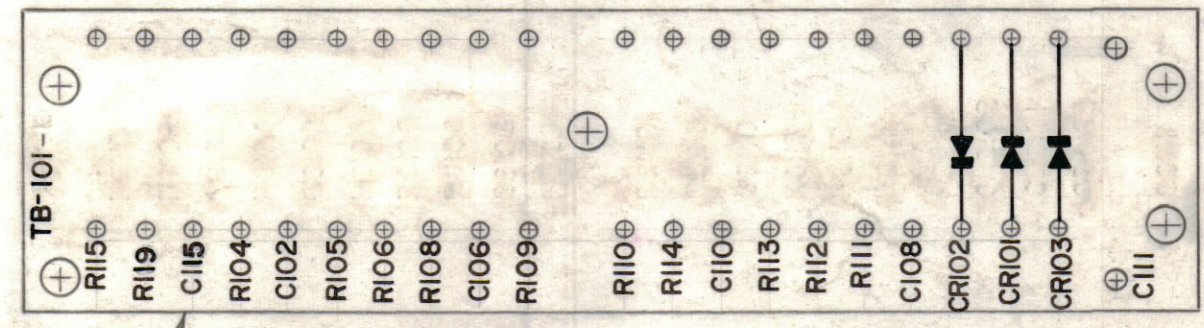


A ~ .073 DIA. 40 REQ.
 B ~ .113 DIA. 2 "
 C ~ .189 DIA. 5 "

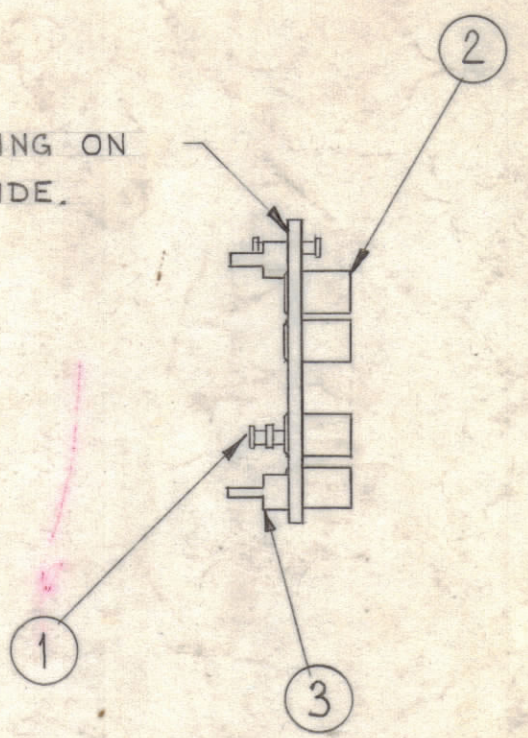
STAGE 1 ~ MACHINING (A-2170-1).
 MATERIAL ~ .062, XXXP, PHENOLIC, FINISH ~ NATURAL



MARKING PROCESS: AS PER TMC SPECIFICATION S-727
 ALL LETTERING TO BE 1/8 HIGH BLACK GOTHIC.
 LETTERING TO START FROM EDGE OF BOARD

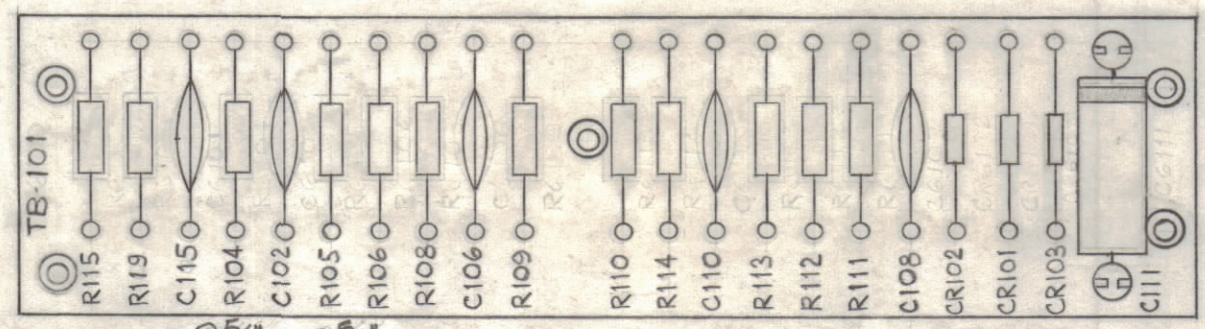
STAGE 2 ~ STAMPING (A-2170-2)

LETTERING ON THIS SIDE.

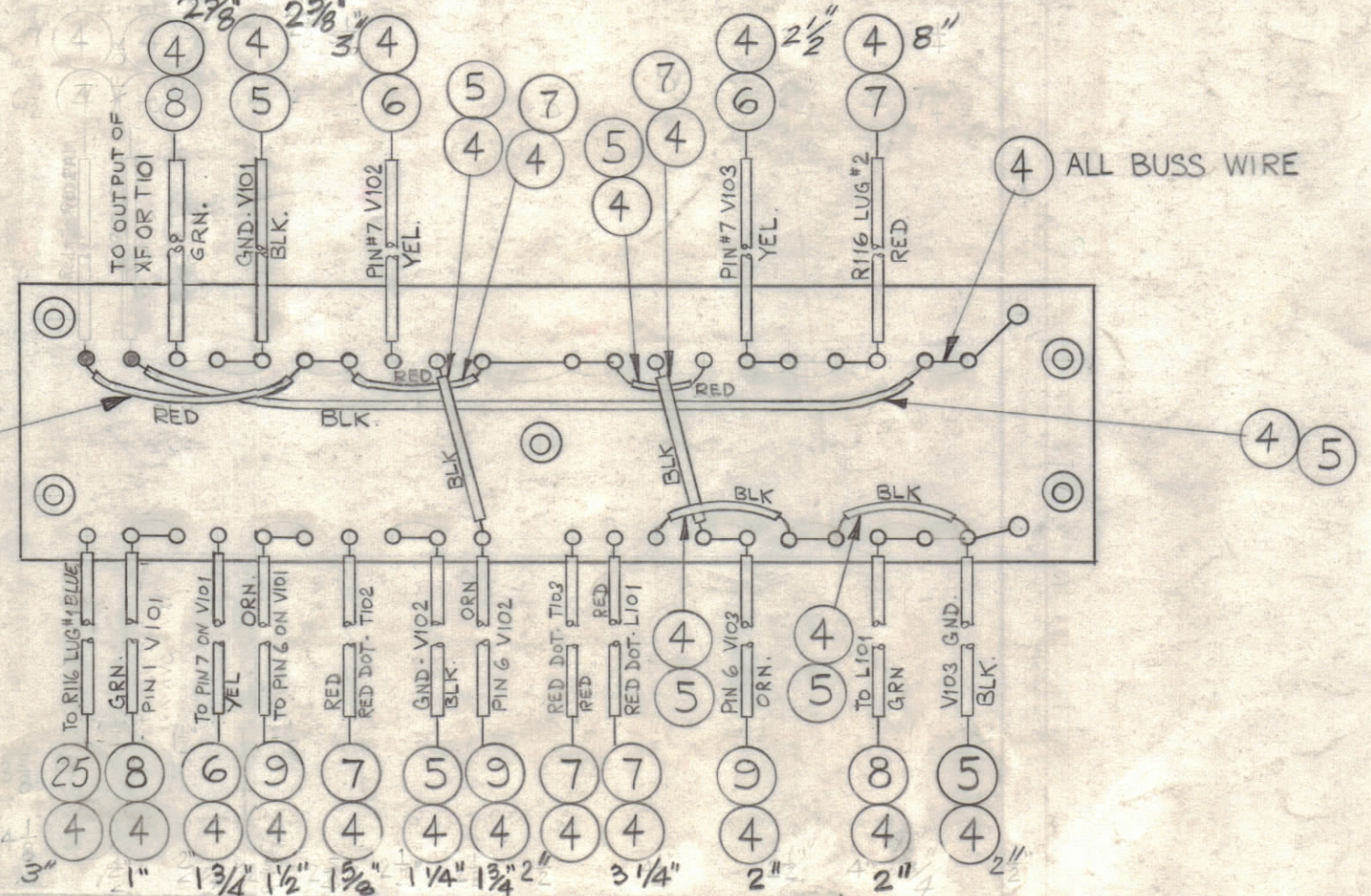


STAGE 3 ~ SUB-ASS'Y. (A-2170-3).

TOP VIEW



BOTTOM VIEW



NOTICE TO PERSONS RECEIVING THIS DRAWING
 THE TECHNICAL MATERIEL CORPORATION claims proprietary right in the material disclosed herein. This drawing is issued in confidence for engineering information only and may not be reproduced or used to manufacture any time shown hereon without permission from THE TECHNICAL MATERIEL CORPORATION to the user. This drawing is loaned for mutual assistance and is subject to recall at any time.
 Property of:
 THE TECHNICAL MATERIEL CORPORATION
 MAMARONECK, N.Y.

- NOTE:**
- 1 - ALL BUSS WIRE TO EXTEND 1/2" BEYOND SLEEVING.
 - 2 - ALL TERMINAL TO TERMINAL SLEEVING TO BE 1/16 FROM TERMINALS
 - 3 - • INDICATES UNSOLDERED TERM'S

ELECTRICAL ASS'Y (A-2170-4).
 STAGE 4

1	26	CM20F561G03	CAPACITOR, FIXED, MICA	C115
	25	PX104-6-034	INSULATION SLEEVING (SIZE 20)	BLUE
X	24	BS-100	SOLDER, SOFT	
1	23	CC-100-32	CAPACITOR, FIXED CERAMIC DISC	C108
3	22	CC-100-24	CAPACITOR, FIXED CERAMIC DISC	C102, 106, 110
1	21	GN112A105K2	CAPACITOR, FIXED, PLASTIC, MYLAR	C111
3	20	1N463	SEMICONDUCTOR DEVICE, DIODE	C101, 102, 103
1	19	RC20GF471J	RESISTOR, FIXED, COMP.	R111
1	18	RC20GF224J		R112
1	17	RC20GF103J		R113
	16	DELETED		
3	15	RC20GF332J		R106, 110, 114
1	14	RC20GF273J		R105
2	13	RC20GF101J		R104, 108
1	12	RC20GF105J		R119
2	11	RC20GF223J	RESISTOR, FIXED, COMP.	R15, 109
10		DELETED		
9		PX-104-8-034	INSULATION SLEEVING (SIZE 20)	ORN.
8		-4		GRN
7		-3		RED
6		-2		YEL
5		PX-104-1-034	INSULATION SLEEVING (SIZE 20)	BLK
X	4	WL-100-7	WIRE, ELECTRICAL, BUSS, SIZE 22	
2	3	TE-109-1	TERMINAL, STUD	
5	2	TE-164-1	NUT, PLAIN, CLINCH	
40	1	TE-168-4B	TERMINAL, STUD	

REV. LGTHS. OF ITEM 4 ON BOTTOM VIEW, UPDATED	7-20-67	18304	HED	HP			
IT. 16 DELE, IT. 13 WAS 1 REQ.	11-21-66	17292	RME				
NOTE 1 REVISED, ALL SLEEVING LGTHS. CHG.	11/9/66	15466	HAN	JPB			
SYMBOL	ZONE	DESCRIPTION	DATE	CH. NO.	DRAFTS	CHECKER	ENG. APP.
UNLESS OTHERWISE SPECIFIED:			SCALE DO NOT SCALE				
DIMENSIONS ARE IN INCHES			MAXIMUM ALLOWABLE TOLERANCES HAVE BEEN DETERMINED AND ANY DEVIATIONS WILL BE CAUSE FOR REJECTION. REMOVE ALL BURRS & SHARP EDGES				
TOLERANCES ON FRACTIONS ± 1/64			DECIMALS ± .005			ANGLES ± 1/2°	

7	HFI-1	IF		9-9-61
4	SBS-1	IF		9-9-61
REQ. PER UNIT	MODEL	SECTION	ASS'Y. NO.	DATE
USED ON				

REQ. ITEM	PART NO.	M. GELLMAN	DESCRIPTION	SYMBOL
THE TECHNICAL MATERIEL CORP.				
MAMARONECK, NEW YORK				
STOCK SIZE				
TERMINAL BOARD ASS'Y.				
MATERIAL				
DRAWN				
CHECKED				
FINAL APPROVAL				
TYPE & TEMPER				
HEAT TREAT. SPEC.				
FINISH & SPEC. NO.				
ELEC. DES. APP.				
MECH. DES. APP.				
SHEET OF				
DEFIANCE NO. 1020 34852				