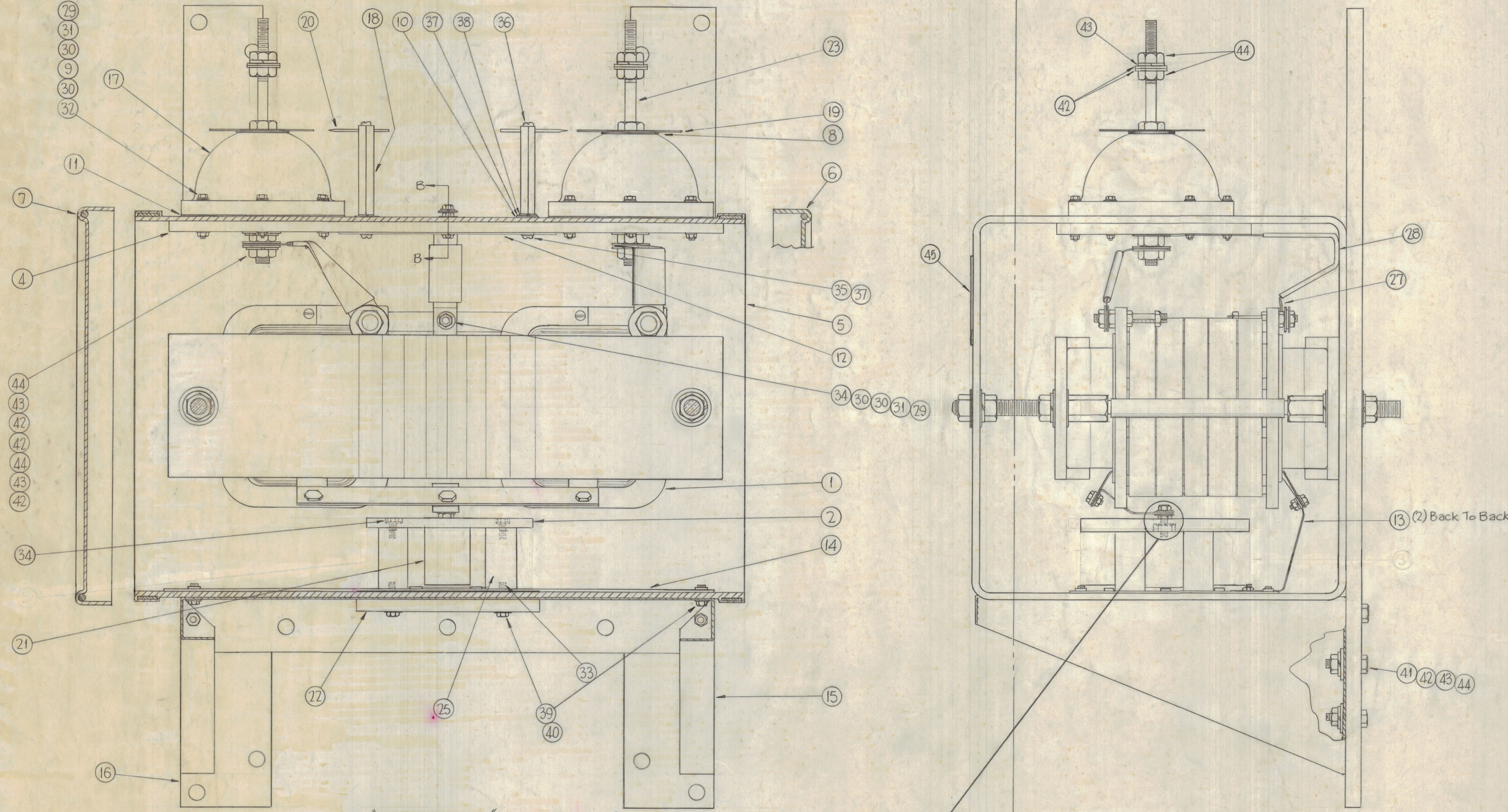


NOTICE TO PERSONS RECEIVING THIS DRAWING

THE TECHNICAL MATERIEL CORPORATION claims proprietary right in the material disclosed herein. This drawing is issued in confidence for engineering information only and may not be reproduced or used to manufacture any thing shown herein without permission from THE TECHNICAL MATERIEL CORPORATION to the user. This drawing is loaned for mutual assistance and is subject to recall at any time.

Property of:

THE TECHNICAL MATERIEL CORPORATION  
MAMARONECK, NEW YORK



"SECTION A-A"

"SECTION B-B"

NOT TO BE RELEASED  
W/O AUTHORIZATION

AUTH. BY: \_\_\_\_\_  
DATE: \_\_\_\_\_

REQ.	ITEM	PART NO.	DESCRIPTION	SYMBOL
1	45	NP412	PLATE, ID	
18	44	NTH5020BN24	NUT, HEX	
16	43	LWS50MRN	WASHER, LOCKING TYPE, SPLIT	
22	42	FW50HBN	WASHER, FLAT	
6	41	SCHH5020BN24	BOLT, MACHINE, HEX HEAD	
10	40	FW37HBN	WASHER, FLAT	
10	39	SCHH37116BN16	BOLT, MACHINE, HEX HEAD	
2	38	LWS08MRN	WASHER, LOCKING TYPE, SPLIT	
4	37	FW08HBN	WASHER, FLAT	
2	36	SCBP0832BN6	SCREW, MACHINE	
2	35	SCBP0832BN20	SCREW, MACHINE	
4	34	SCHH2520BN12	BOLT, MACHINE, HEX HEAD	
4	33	SCFP2520BN10	BOLT, FLAT HEAD, PHILLIPS	
13	32	SCHH2520BN24	BOLT, MACHINE, HEX HEAD	
18	31	LWS25MRN	WASHER, LOCKING TYPE, SPLIT	
34	30	FW25HBN	WASHER, FLAT	
19	29	NTH2520BN14	NUT, HEX.	
9	28	PX-370-59-7	SLEEVING, TEFLON (9 IN.)	
1	27	MS-2657-3	STRAP CONNECTING, 600.Ω	
1	26	TE-106	LUG, SOLDERLESS	
4	25	TE2520GR27R	SPACER, THREADED, 2" LG.	
1	24	SM2520BS1.75	STUD 1/4-20 x 1 3/4 LG.	
2	23	SM-150	STUD, OUTPUT	
1	22	PO-223	FLANGE, 3 1/8 EIA	
1	21	PM-727-1	CONTACT, CUP TYPE, 3 1/8 EIA, 50Ω	
2	20	PM-724-1NR	ROD, SPARK	
2	19	PM-723-2NR	CONTACT, SPARK GAP, CIRCULAR	
2	18	PM-721-2NR3.125	POST, SPARK ROD	
2	17	NS-123	INSULATOR, FLANGED BOWL	
2	16	MS-2777	SUPPORT, CRADLE BASE	
1	15	MS-2776	CRADLE, MOUNTING	
1	14	MS-2741	PLATE, REINFORCEMENT, 50 Ω	
2	13	MS-2719	STRAP, GROUND, 50Ω	
1	12	MS-2718	PLATE, SPARK GAP	
2	11	GA-139	GASKET, NEOPRENE	
2	10	GA-137-6	GASKET, NEOPRENE	
13	9	GA-104	GASKET, NEOPRENE	
2	8	GA-100	GASKET, NEOPRENE	
1	7	PX-641-3	CASE & COVER	
1	6	PX-641-2	CASE & COVER	
1	5	PX-641-1	CASE & COVER	
1	4	PX-632	PLATE, REINFORCEMENT	
1	2	PX-630	PLATE, CONNECTOR	
1	1	TR-169	TRANSFORMER, R.F.	

REV.	DESCRIPTION	DATE	CH. NO.	DRAFTS	CHECKER	ENG. APP.
F	PCT CHANGED TO CONFORM W/ A-2174 (STEP 15)	9-21-61	12400	NRB		
E	IT. 3 PX-631 DELETED	7-22-61	11851	SRG		
D	IT. 43 ADDED. 7 ITEMS ADDED TO PICTORIAL QTY. IT. 42 WAS 18, IT. 43 WAS 14, IT. 44 WAS 14	11-10-62	10893			
C	A4 AUTHORIZATION NOTE ADDED	4-27-62	6651	HR		
B	ITEM (2) WAS PM-721-2-NR2-1250					
A	ITEM (3) WAS SCHH3116BN16					
D3	ITEM (3) WAS 12 REQ. ITEM (4) WAS 10 REQ. ITEM (5) WAS 1 W/ 5 HBN					
D3	ITEM (3) WAS 12 REQ. ITEM (4) WAS 10 REQ. ITEM (5) WAS 12 REQ.					
D3	ITEM (3) WAS 12 REQ. ITEM (4) WAS 9 REQ. ITEM (5) WAS 6 REQ.					

SYM	ZONE	DESCRIPTION	SCALE	DATE	CH. NO.	DRAFTS	CHECKER	ENG. APP.
UNLESS OTHERWISE SPECIFIED:								
DIMENSIONS ARE IN INCHES								
TOLERANCES ON FRACTIONS ± 1/64 DECIMALS ± .005 ANGLES ± 1/2°								
MAXIMUM ALLOWABLE TOLERANCES HAVE BEEN DETERMINED AND ANY DEVIATIONS WILL BE CAUSE FOR REJECTION. REMOVE ALL BURRS & SHARP EDGES								

REQ. PER UNIT	MODEL	SECTION	ASSY. NO.	DATE
1	TDC-ZOK			12-4-61
USED ON				

REQ.	ITEM	PART NO.	DESCRIPTION	SYMBOL
THE TECHNICAL MATERIEL CORP. MAMARONECK, NEW YORK				
FINAL ASSEMBLY, TRC-ZOK				
MATERIAL				
DRAWN: RUZZO				
CHECKED: [Signature]				
FINAL APPROVAL: [Signature]				
TYPE & TEMPER: 28				
HEAT TREAT. SPEC.: [Signature]				
FINISH & SPEC. NO.: [Signature]				
ELEC. DES. APP. MECH. DES. APP. SHEET OF				
A-2239 F				