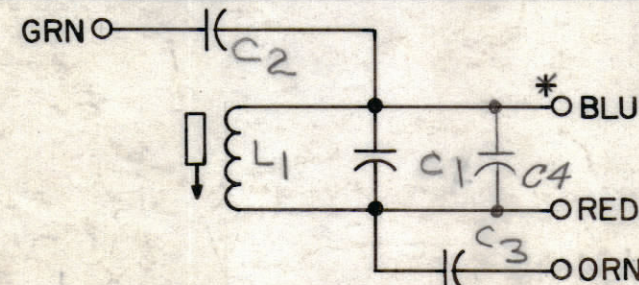


TMC MFG. NO.	C1 (ITEM 15)	C2 (ITEM 16)	C3 (ITEM-17)	L1									TMC PART NO (STAMP ON CAN)	BASE COLOR CODE	CA (ITEM 20)	A2243 E
				IND. NO CORE	Q.	COIL RES	TEST FREQ.	CAM GEAR	CAM DRIVER	CAM	TURNS	WIRE (ITEM 18)				
A-2243-705	CM20C202J	CM20C511J	CC-100-32	12-16 μ h	60 OR BETTER	1 Ω	2.5 MC	106	69	.250	50	WI-104-1243-SC-QS	NF-107-705	RED	NONE	
A-2243-2000	CM20C681J	CM20C511J	CC-100-32	5 μ h \pm 5%	45 OR BETTER	LESS THAN 1 Ω	7.9 MC	107	69	.250	30	WI-104-1243-SC-QS	NF-107-2000	YELLOW	NONE	
A-2243-350	CM112F202D5S	CM15F511G03	CC-100-37	30 μ h \pm 10%	30 OR BETTER	LESS THAN 1 Ω	2.5 MC	81	39	.250	72	WI-104-1141-SC-QS	NF-107-350	ORANGE/BLUE	CM112E202D3S	

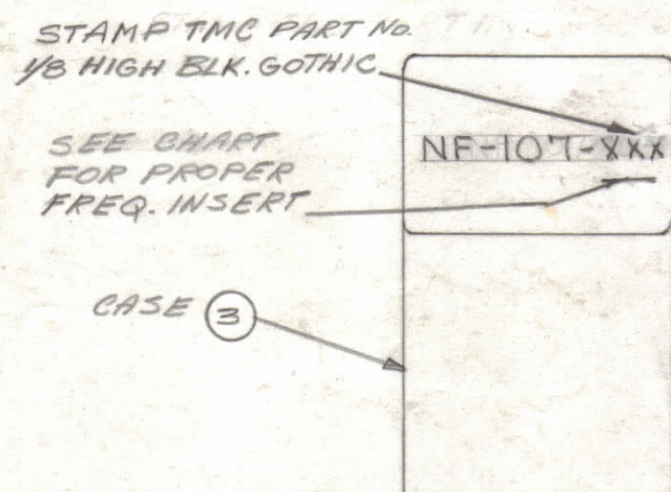
WINDING & ASSEMBLY INSTRUCTIONS

- 1- WIND PRIMARY (WIRE) STARTING 7/32" FROM END. STAKE ENDS WITH GL-103 (ITEM 8).
- 2- COLOR CODE BASE AS SHOWN.
- 3- STRIP & TIN LEADS. SOLDER THEM TO PROPER COLOR-CODED TERMINALS ON BASE.
- 4- MEASURE Q, IND, RES, W/O CORE.
- 5- BAKE FOR 15 MIN. AT 220° F. SATURATE COILS WITH GL-102 (ITEM 9).
- 6- SOLDER COMPONENT LEADS TO TERMINALS.
- 7- ASSEMBLE AS PER ASSEMBLY DRAWING. PLACE IN CASE.
- 8- SOLDER COVER TO CAN (ALL AROUND)
- 9- PAINT CAN (ALL SURFACES EXCEPT TERMINAL END.)
PAINT SPEC. - S-371 DECREASE; S-114 ZINC CHROME PRIMER; S-115 SMOOTH GRAY ENAMEL.
- 10- STAMP TOP OF CAN AS SHOWN.

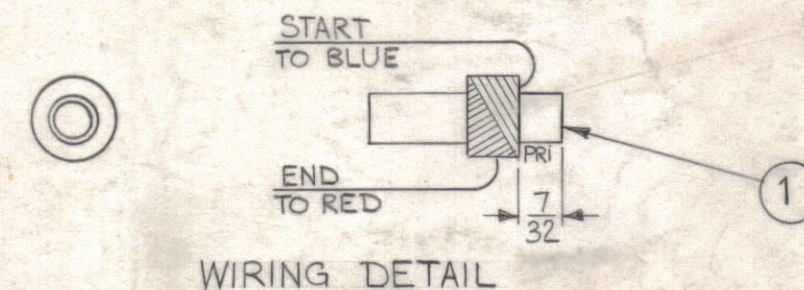


SCHEMATIC DIAGRAM

* INDICATES START OF WINDING.



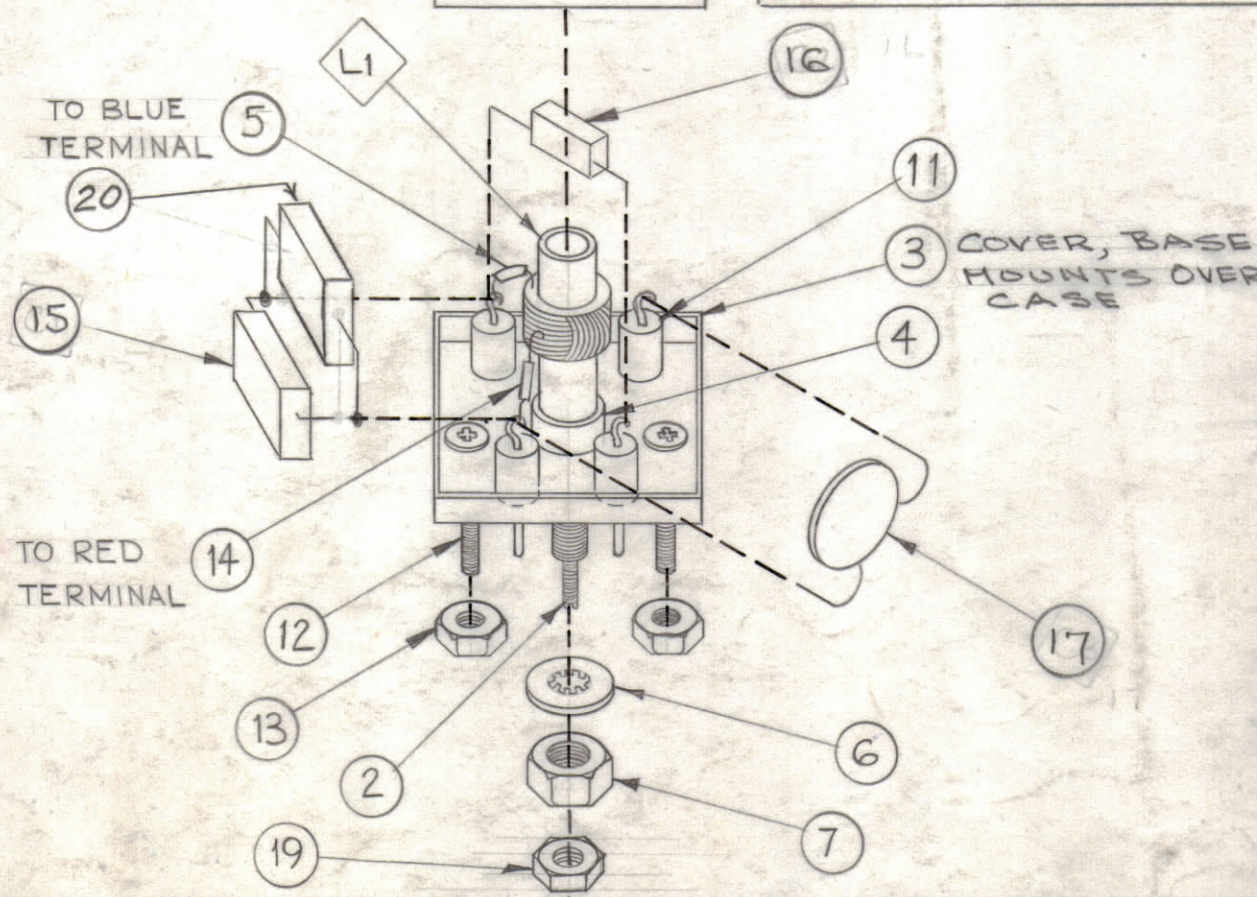
NOTICE TO PERSONS RECEIVING THIS DRAWING:
THE TECHNICAL MATERIEL CORPORATION claim proprietary right in the material disclosed herein. This drawing is issued in confidence for engineering information only and may not be reproduced or used to manufacture anything shown herein without permission from THE TECHNICAL MATERIEL CORPORATION to the user. This drawing is loaned for mutual assistance and is subject to recall at any time.
Property of:
THE TECHNICAL MATERIEL CORPORATION
MAMARONECK, NEW YORK



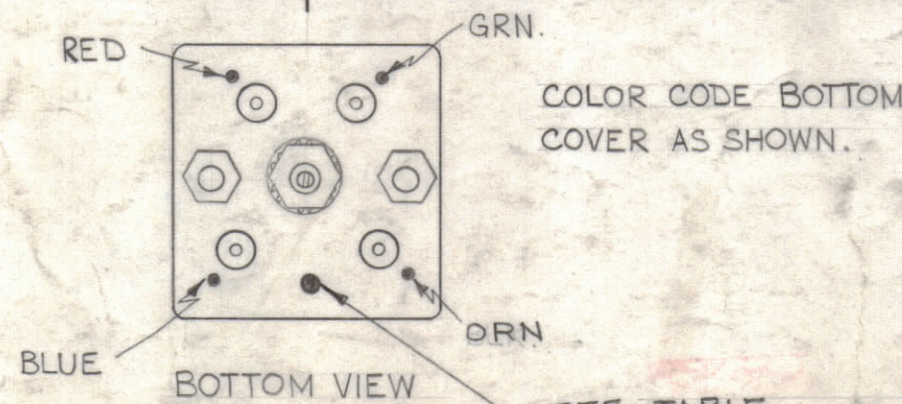
WIRING DETAIL

NOMENCLATURE
NF-107-705

BASIC NO **FREQ. KCS**



REQ.	ITEM	PART NO.	DESCRIPTION	SYMBOL
1	20	SEE CHART	CAP., EXP. MICA,	C4
1	19	NTH0348BNG	NUT, HEX.	
X	18	SEE CHART	WIRE, LITZ	
1	17	SEE CHART	CAPACITOR, FIXED MICA	C3
1	16	SEE CHART	" " " "	C2
1	15	SEE CHART	" " " "	C1
X	14	PX-104-3-.085	INSULATION, SLEEVING	RED
2	13	NTH0632BN8	NUT, HEX	
2	12	SCBPO632BNG	SCREW, MACHINE	
4	11	PL-217-1-9	PLUG, MINIATURE	
X	10	BS-100	SOLDER, SOFT	
X	9	GL-102	G-DOPE	
X	8	GL-103	DUCO	
1	7	NTH0832BN8	NUT, HEX	
1	6	LW108MRN	LOCKWASHER, INTERNAL	
X	5	PX-104-6-.085	INSULATION, SLEEVING	BLUE
1	4	SM-140-2	BUSHING, COIL MTG.	
1	3	BX-198	CASE & COVER	
1	2	CI-116-6	CORE, TUNING	
1	1	CF-122-1.0	COIL FORM, .250 O.D.	



SEE TABLE FOR COLOR CODE

REV	DATE	BY	CHKD	APP
F	12-27-65	15434	XVY	Q/S
E	12-16-63	10555		
D	11-17-63	10412		
C	6-3-63	8155		
B	4-17-62	6619		
A	2-26-62	6272	G.S.	

SYM	ZONE	DESCRIPTION	DATE	CH. NO.	DRAFTS	CHECKER	ENG. APP.
UNLESS OTHERWISE SPECIFIED:							
DIMENSIONS ARE IN INCHES			SCALE DO NOT SCALE				
TOLERANCES ON FRACTIONS \pm 1/64 DECIMALS \pm .005 ANGLES \pm 1/2°							
MAXIMUM ALLOWABLE TOLERANCES HAVE BEEN DETERMINED AND ANY DEVIATIONS WILL BE CAUSE FOR REJECTION. REMOVE ALL BURRS & SHARP EDGES							

REQ. PER UNIT	MODEL	No.	SECTION	ASS'Y. NO.	DATE
1	AFC-3	NF-107-2000			4-12-62
1	AFC-2, 2A	NF-107-705			12-9-61

REQ.	ITEM	PART NO.	DESCRIPTION	SYMBOL
THE TECHNICAL MATERIEL CORP. MAMARONECK, NEW YORK				
NF-107 ASS'Y. (NETWORK FREQUENCY)				
MATERIAL				
STOCK SIZE				
FINISH & SPEC. NO.				
ELEC. DES. APP. MECH. DES. APP. SHEET OF				