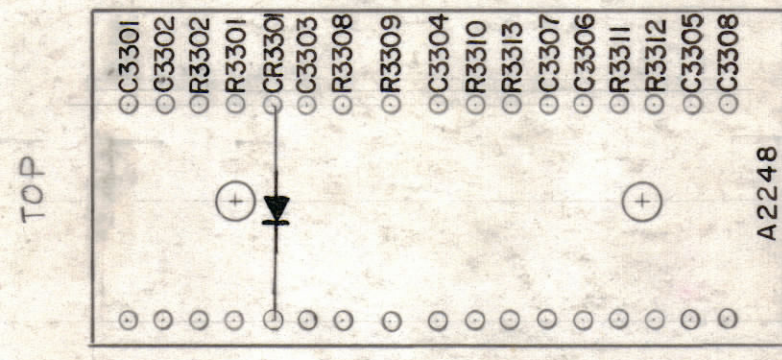
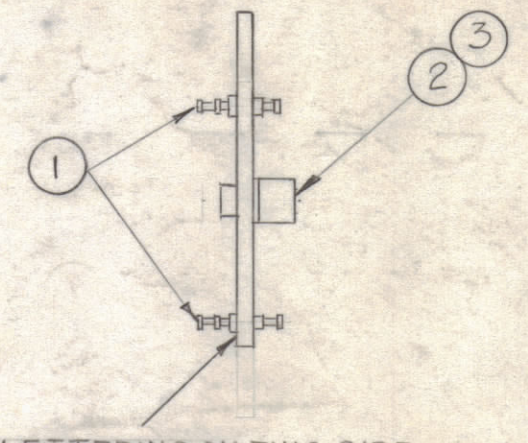


HOLES ~  
A - .078 D. 34 Req.  
B - .189 D. 2 Req.

NOTE -  
ALL LETTERING 3/32  
HIGH BLACK GOTHIC,  
AS SHOWN.



3/32 HIGH BLACK LUSTERLESS, GOTHIC LETTERING.  
MARKING PROCESS: AS PER TMC SPECIFICATION S-727

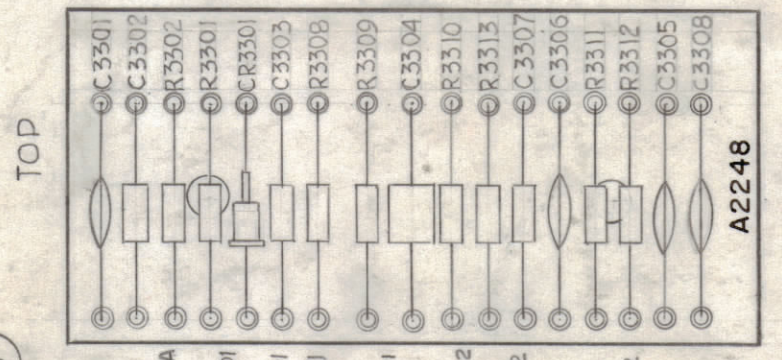


STAGE-1-MACHINING (A-2248-1)  
MATERIAL - 3/32, XXXP, PHENOLIC, FINISH - NATURAL

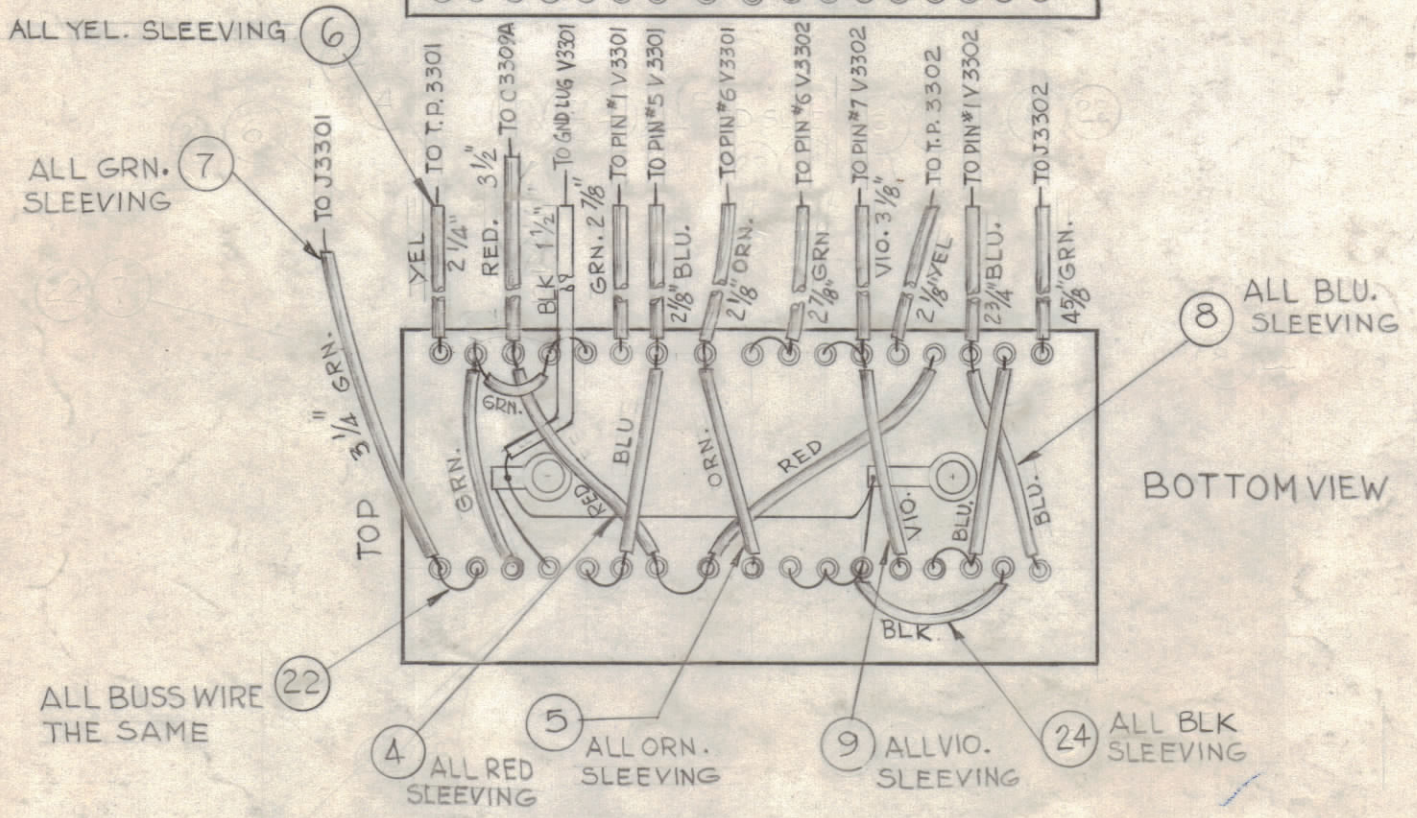
STAGE-2-STAMPING (A-2248-2)

STAGE-3-SUB-ASSEMBLY (A-2248-3)

TMC ELEC. ASSY NO.	ITEM No. 19 R3313	ITEM No. 20 R3311	ITEM No. 21 R3312	USED ON
A 2248-4	RC20GF333K	RC20GF153K	RC20GF561K	AX386 (HFS-1)
A 2248-5	RC20GF105J	RC20GF472J	RC20GF222J	AX386-2 (HFS-2)



TOP VIEW



BOTTOM VIEW

NOTE  
1) LENGTHS ARE FROM TO TERMINAL TO END OF BUSS WIRE.

NOTE  
1) UNLESS OTHERWISE SPECIFIED ALL SLEEVING TO BE 1/2" SHORTER THAN WIRE.  
2) ALL BUSS-WIRE TO BE 1/2" LONGER

STAGE-4-ELECTRICAL ASS'Y (SEE CHART)

REQ.	ITEM	PART NO.	DESCRIPTION	SYMBOL
2 1/2"	24	MWC 22 (7) U0	CABLE, INSULATION	BLACK
X	23	BS-100	SOLDER, SOFT	
5"	22	WL-100-7	BUSS, WIRE	
1	21	SEE CHART	RESISTOR FIXED COMPOSITION 560	R3312
1	20	SEE CHART	RESISTOR FIXED COMPOSITION 15K	R3311
1	19	SEE CHART	RESISTOR FIXED COMPOSITION 15K	R3313
1	18	RC32GF153J	RESISTOR FIXED COMPOSITION 15K	R3309
1	17	RC20GF225J	RESISTOR FIXED COMPOSITION 2.2M	R3301
3	16	RC20GF104J	RESISTOR FIXED COMPOSITION 100K	R3310, R3308, R3302
1	15	IN463	SILICON RECTIFIER	CR3301
2	14	CM15F101J03	CAPACITOR FIXED MICA DIELECTRIC	CC3307, CC3302
2	13	CM15C560G03	CAPACITOR FIXED MICA DIELECTRIC	CC3304, CC3303
1	12	CC100-37	CAPACITOR FIXED CERAMIC DIELECTRIC	C3305
1	11	CC100-16	CAPACITOR FIXED CERAMIC DISC.	C3308
2	10	CC100-9	CAPACITOR FIXED CERAMIC DISC.	C3301, C3306
3 5/8"	9	MWC 22 (7) U7	WIRE, ELECTRICAL	VIOLET
6 7/8"	8		WIRE, ELECTRICAL	BLUE
12 7/8"	7		WIRE, ELECTRICAL	GREEN
4"	6		WIRE, ELECTRICAL	YELLOW
2 5/8"	5		WIRE, ELECTRICAL	ORANGE
5 7/8"	4	MWC 22 (7) U2	WIRE, ELECTRICAL	RED
2	3	TE-116-3	SOLDER LUG	
2	2	TE-108-13	STANDOFF RIVET TYPE	
34	1	TE-168-4-C	TERMINAL MINIATURE	

SYM	ZONE	DESCRIPTION	DATE	CH. NO.	DRAFTS	CHECKER	ENG. APP.
E		ITS. 13, 14, PIN REVISED	9/30/72	20788	GE		
D		TMC ELEC ASSY. No. ADDED. BUILDUP CLARIFIED	6-6-66	16240	GDL		
C	CZ	IT. 12 WAS CN-106-D-104M (MYLAR)	4-13-65	13873			
B	HG	3 3/4 DIM. WAS 3 7/8	12/12/63	10529			
A	CZ	ITEM (12) WAS CN-106-D-1-1003M	12-11-62	7845			

UNLESS OTHERWISE SPECIFIED:  
DIMENSIONS ARE IN INCHES  
TOLERANCES ON FRACTIONS ± 1/64 DECIMALS ± .005 ANGLES ± 1/2°  
SCALE DO NOT SCALE  
MAXIMUM ALLOWABLE TOLERANCES HAVE BEEN DETERMINED AND ANY DEVIATIONS WILL BE CAUSE FOR REJECTION. REMOVE ALL BURRS & SHARP EDGES

REQ. PER UNIT	MODEL	SECTION	ASS'Y. NO.	DATE
	HFS-1	3300		8-17-62

REQ.	ITEM	PART NO.	J. STRUMMER	DESCRIPTION	SYMBOL
THE TECHNICAL MATERIEL CORP. MAMARONECK, NEW YORK					
TERMINAL BOARD 3300 PHANOSTRON DIVIDER					
G.D.L.		J.M.A.		R.P.	
DRAWN		CHECKED		FINAL APPROVAL	
TYPE & TEMPER		HEAT TREAT. SPEC.		A-2248	
FINISH & SPEC. NO.		ELEC. DES. APP.		MECH. DES. APP.	
		SHEET		OF	