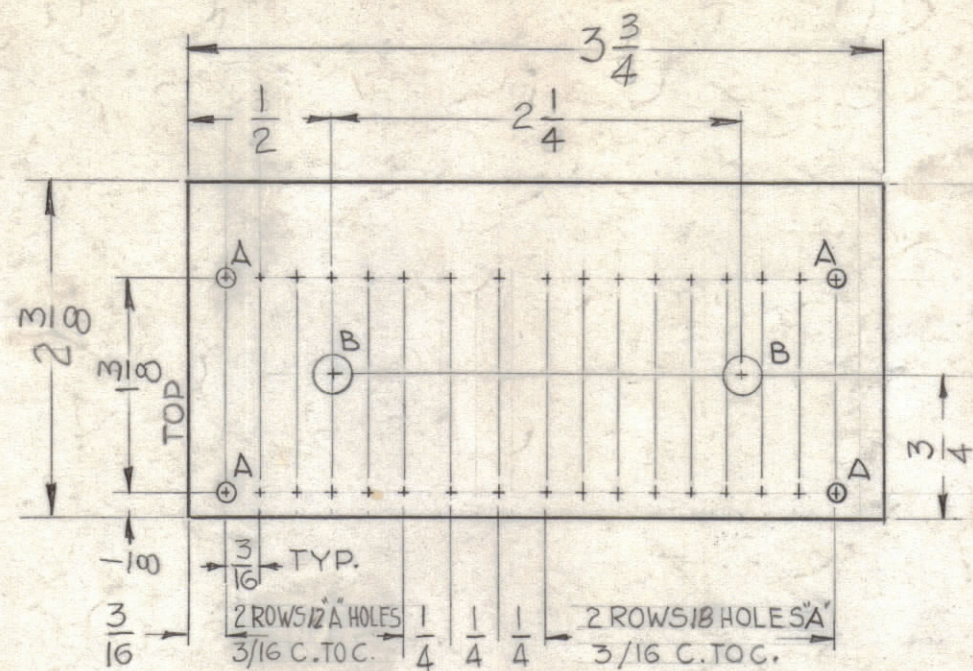


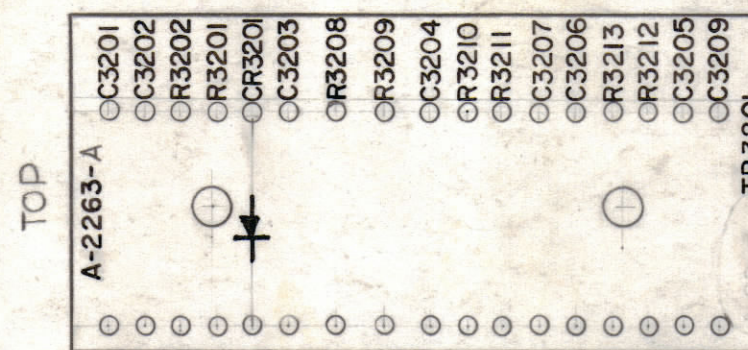
HOLES~  
A- .078 D. 34 Req.  
B- .189 D. 2 Req.



STAGE-1 MACHINING (A-2263-1)

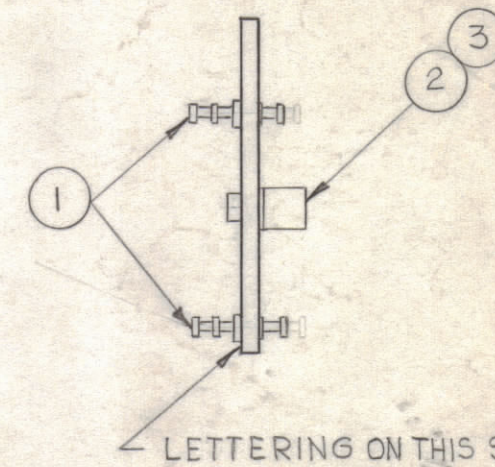
MATERIAL- 3/32, XXXP, PHENOLIC, FINISH-NATURAL

ALL LETTERING TO BE  
3/32 HIGH BLACK GOTHIC



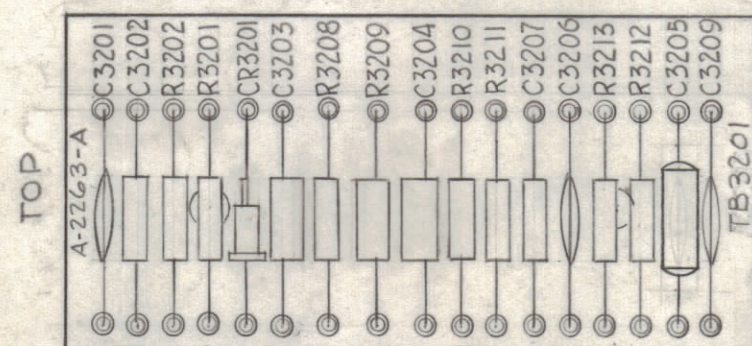
MARKING PROCESS: AS PER TMC S-727  
3/32 HIGH BLACK LUSTERLESS, GOTHIC LETTERING.  
(PHOTO WEINLAY PROCESS OR EQUIVALENT)

STAGE-2 STAMPING (A-2263-2)

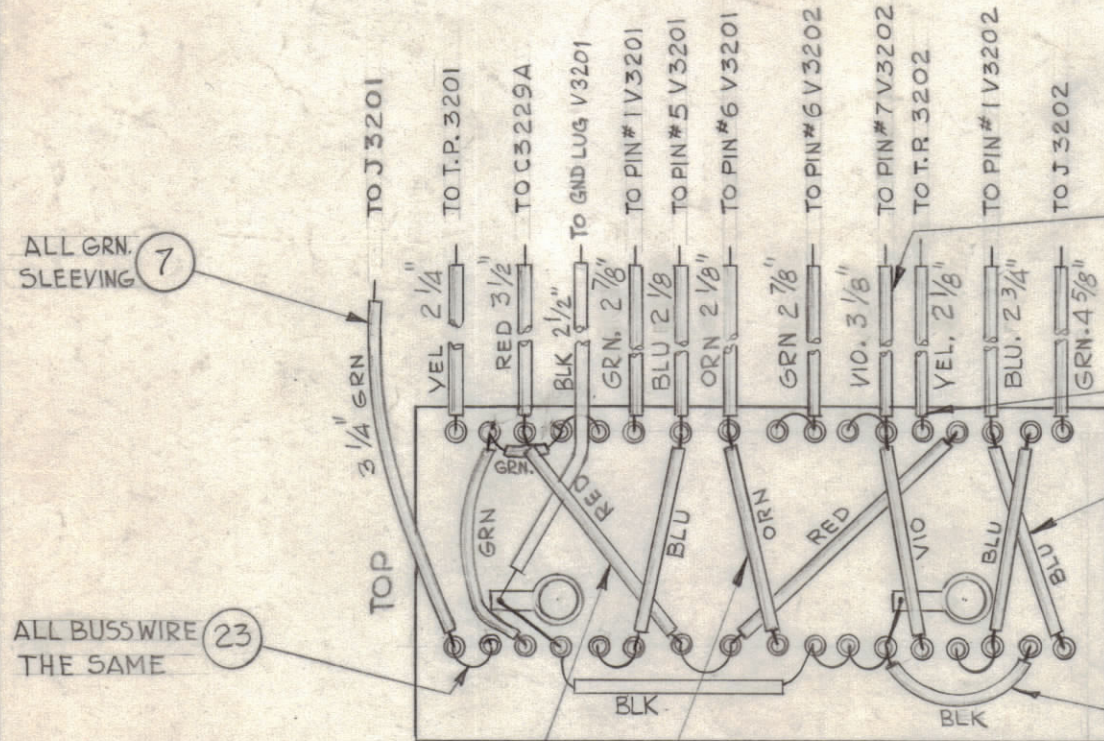


STAGE-3 SUB-ASS'Y (A-2263-3)

ELEC ASSY TMC ASSY NO.	ITEM NO. 14	ITEM NO. 18	ITEM NO. 20	ITEM NO. 26	USED ON
	C3207	R3213	R3211	C3204	
A2263-4	CM15C331K	RC20GF153K	RC20GF333K	CM20B561J	HFS-1 AX385
A2263-5	CM20F102G03	RC20GF472J	RC20GF105J	CM15F101G03	HFS-2 AX385-2



TOP VIEW



BOTTOM VIEW

- 7 ALL GRN. SLEEVING
- 8 ALL BLU. SLEEVING
- 9 ALL VIO. SLEEVING
- 6 ALL YEL. SLEEVING
- 4 ALL RED SLEEVING
- 5 ALL ORN. SLEEVING
- 23 ALL BUSSWIRE THE SAME
- 25 ALL BLK. SLEEVING

NOTE

- 1) LENGTHS ARE FROM TERMINAL TO END OF BUSS WIRE
- 2) ALL SLEEVING TO BE 1/2" SHORTER THAN WIRE

NOTICE TO PERSONS RECEIVING THIS DRAWING

THE TECHNICAL MATERIEL CORPORATION claims proprietary right in the material disclosed hereon. This drawing is issued in confidence for engineering information only and may not be reproduced or used to manufacture anything shown hereon without permission from THE TECHNICAL MATERIEL CORPORATION to the user. This drawing is loaned for mutual assistance and is subject to recall at any time.

Property of:

THE TECHNICAL MATERIEL CORPORATION  
MAMARONECK, NEW YORK

QTY	ITEM	PART NO.	DESCRIPTION	SYMBOL
1	26	SEE CHART	CAPACITOR, FIXED MICA 100 PF	C3204
5	25	MWC 22(7) UO	CABLE, INSULATION	BLACK
x	24	BS-100	SOLDER, SOFT	
48 1/8	23	WL-100	WIRE, BUSS	
1	22	IN-463	SILICON DIODE	CR3201
1	21	RC20GF471K	RESISTOR, FIXED COMPOSITION - 470Ω	R3212
1	20	SEE CHART	- 33K	R3211
1	19	RC20GF225K	- 2.2M	R3201
1	18	SEE CHART	- 15K	R3213
1	17	RC30GF153K	- 15K	R3209
3	16	RC20GF104K	RESISTOR FIXED COMPOSITION - 100K	R3202, R3208, 10
1	15	CM20F561J03	CAPACITOR, FIXED, MICA DIELECTRIC	C3203
1	14	SEE CHART	CAPACITOR, FIXED, MICA DIELECTRIC	C3207
1	13	CM15F101G03	CAPACITOR, FIXED, MICA DIELECTRIC	C3202
1	12	CN112A105K2	CAPACITOR, TUBULAR MICA DISC	C3205
1	11	CC-100-16	CAPACITOR, FIXED, CERAMICS DISC.	C3209
2	10	CC-100-9	CAPACITOR, FIXED, CERAMICS DISC.	C3201, C3206
3 5/8	9	MWC 22(7) U7	WIRE, ELECTRICAL	VIOLET
6 7/8	8			BLUE
12 7/8	7			GREEN
4"	6			YELLOW
2 5/8	5			ORANGE
5 7/8	4	MWC 22(7) U2	WIRE, ELECTRICAL	RED
2	3	TE-116-3	SOLDER LUG	
2	2	TE-108-13	STANDOFF RIVET TYPE	
34	1	TE-168-4-C	TERMINAL MINIATURE, STAKE TYPE	

STAGE-4 ELECTRICAL ASS'Y (A-2263-4)

SYM	ZONE	DESCRIPTION	DATE	CH. NO.	DRAFTS	CHECKER	ENG. APP.
E		ITS 13, 15 REVISED PART NOS.	8/30/72	20796	GE	CL	Q
D	B6	CHGD A2248-4 TO A2263-4	7-25-66	CC	RME	CPB	MM
C	E4	ADDED ASS'Y CHART	6/2/66	16240	C.H.	CPB	MM
B	HG	3 3/4 DIM. WAS 3 7/8	12-12-63	10529			
A	CZ	ITEM (12) WAS CC-100-32	11-9-62	7405	GH		

UNLESS OTHERWISE SPECIFIED:  
DIMENSIONS ARE IN INCHES  
TOLERANCES ON  
FRACTIONS ± 1/64 DECIMALS ± .005 ANGLES ± 1/2°

SCALE  
MAXIMUM ALLOWABLE TOLERANCES HAVE BEEN DETERMINED AND ANY DEVIATIONS WILL BE CAUSE FOR REJECTION. REMOVE ALL BURRS & SHARP EDGES

REQ. PER UNIT	MODEL	SECTION	ASS'Y. NO.	DATE
1	HFS-1	3200		8-17-62

USED ON

REQ.	ITEM	PART NO.	J. STRUMMER	DESCRIPTION	SYMBOL
THE TECHNICAL MATERIEL CORP. MAMARONECK, NEW YORK					
STOCK SIZE					
TERMINAL BOARD ASS'Y.					
PHANOSTRON DIVIDER (3200 DECK)					
MATERIAL					
G.D.L. <i>MM</i>					
DRAWN		CHECKED		FINAL APPROVAL	
<i>MM</i>		<i>MM</i>		A-2263	
TYPE & TEMPER		HEAT TREAT. SPEC.		FINISH & SPEC. NO.	
				ELEC. DES. APP. MECH. DES. APP. SHEET OF	