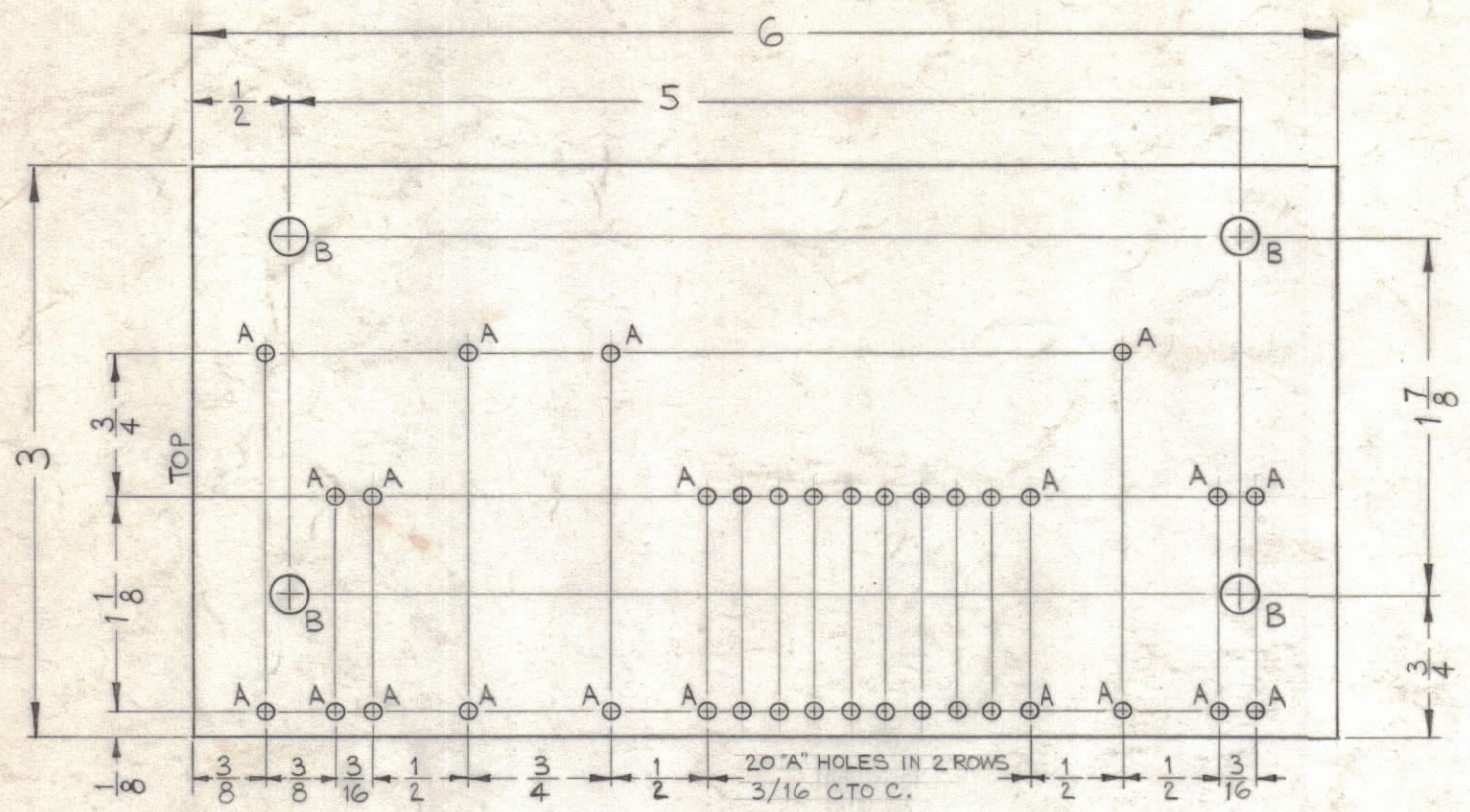
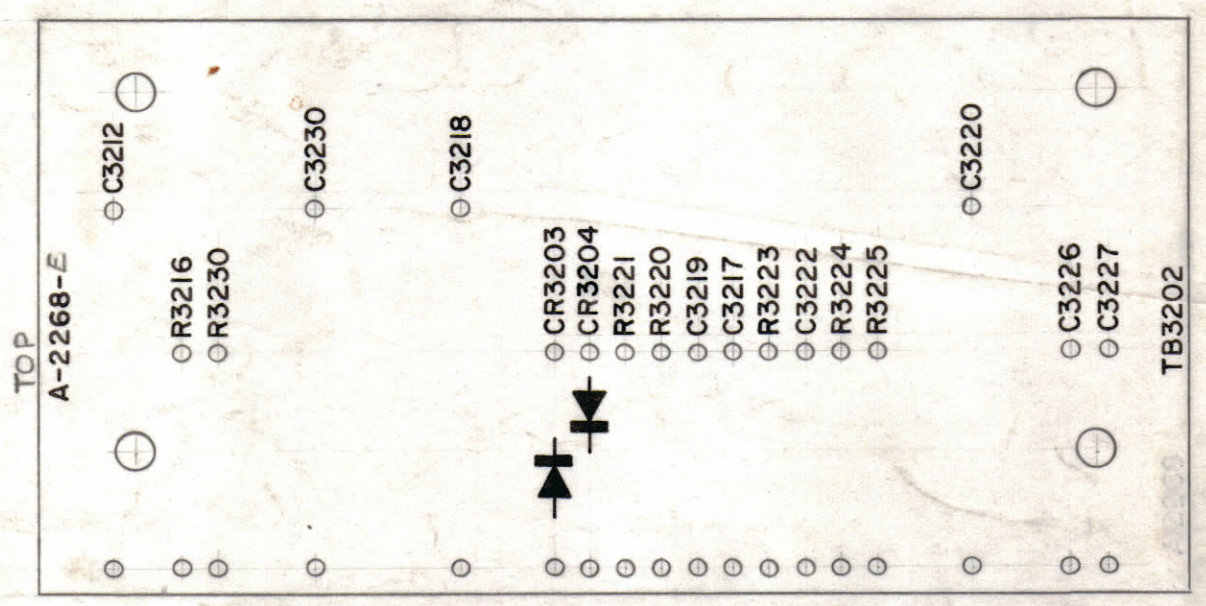


LEGEND		
HOLE	DESCRIPTION	REQ.
A	.078 DIA.	36
B	.189 DIA.	4

ALL LETTERING TO BE 3/32 HIGH BLACK GOTHIC

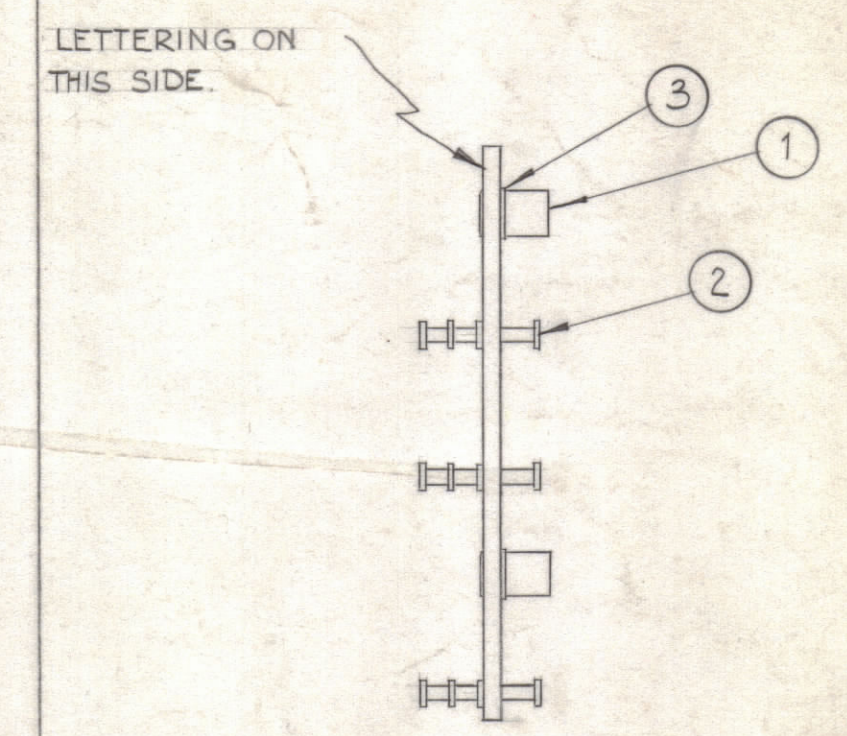


STAGE 1 - MACHINING (A-2268-1)  
MATERIAL - 3/32, XXXP, PHENOLIC, FINISH - NATURAL

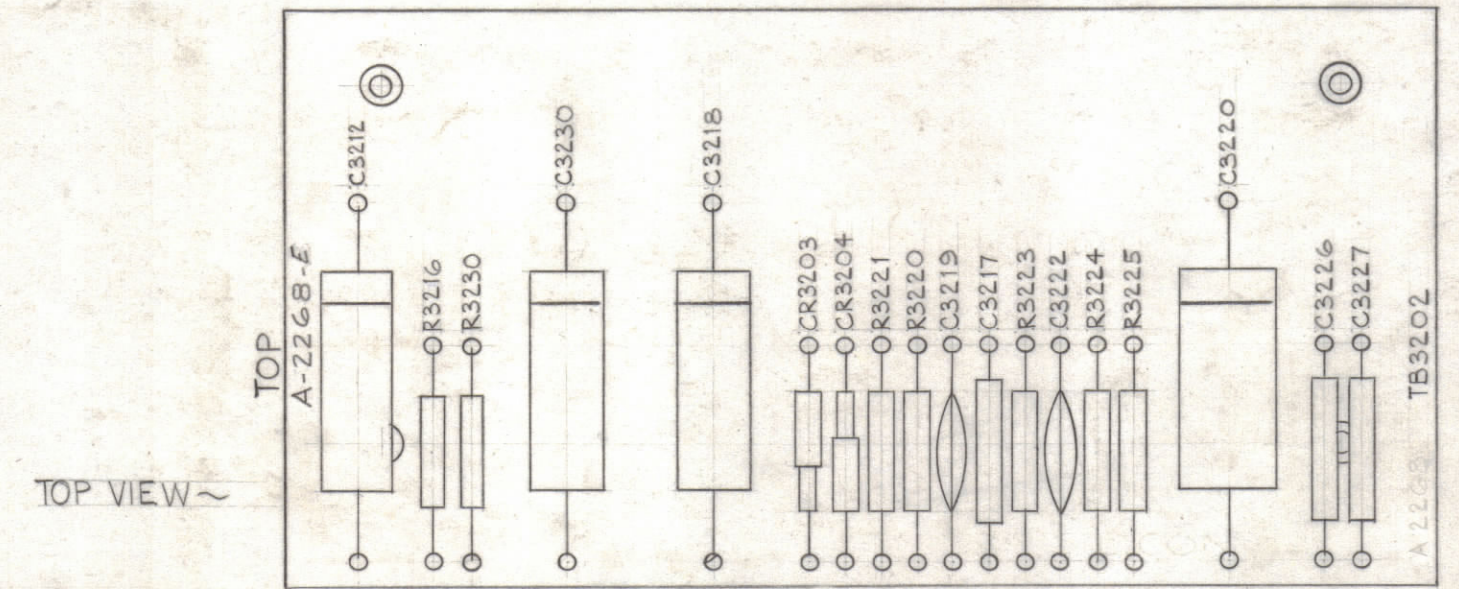


3/32 HIGH BLACK LUSTERLESS, GOTHIC LETTERING.  
MARKING PROCESS: AS PER TMC SPEC S-127

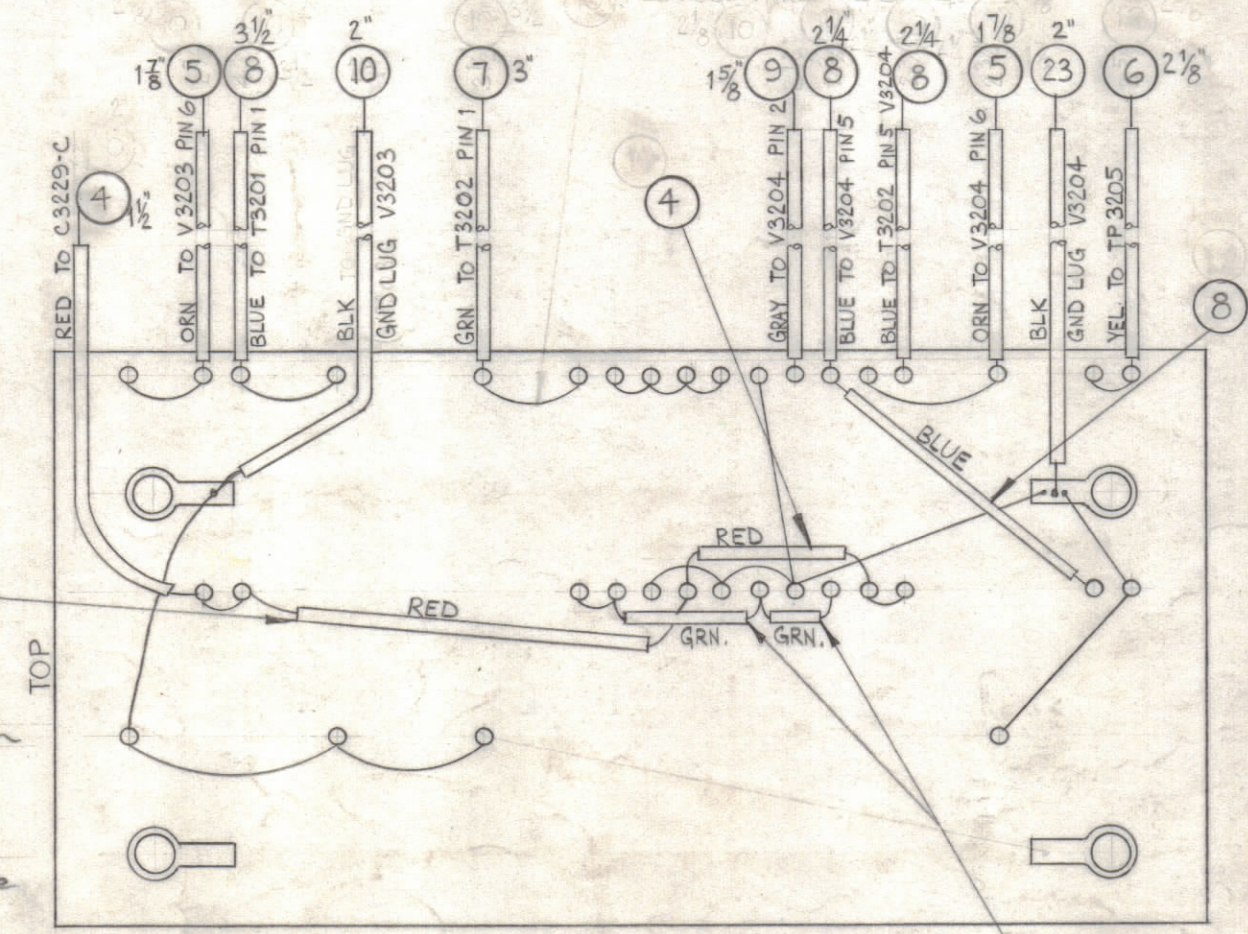
STAGE 2 - STAMPING (A-2268-2)



STAGE 3 - SUB ASS'Y (A-2268-3)



TOP VIEW ~



BOTTOM VIEW ~

STAGE 4 - ELECTRICAL ASS'Y (A-2268-4)

**NOTICE TO PERSONS RECEIVING THIS DRAWING**

THE TECHNICAL MATERIEL CORPORATION claims proprietary right in the material disclosed hereon. This drawing is issued in confidence for engineering information only and may not be reproduced or used to manufacture anything shown hereon without permission from THE TECHNICAL MATERIEL CORPORATION to the user. This drawing is loaned for mutual assistance and is subject to recall at any time.

Property of:  
THE TECHNICAL MATERIEL CORPORATION  
MAMARONECK, NEW YORK

SYM	ZONE	DESCRIPTION	DATE	CH. NO.	DRAFTS	CHECKER	ENG. APP.
F		IT. 14 PART NO. WAS CM15C101K	8/30/62	20796	GE	CL	ML
E		INDICAT. POLARITY ON SYM. C3212, C3230, C3218, C3220	1/16/69	18063	LA	LA	LA
D	C2	ITEM (16) WAS RC20GF153K (1.5K)	10-23-65	10841	LA	LA	LA
C	C2	ITEM (16) WAS RC20GF153K (15K)	5-3-68	8985	LA	LA	LA
B	C2	ITEM (15) WAS CM15F101603	11-7-62	7405	LA	LA	LA
A	Z	WL-100-7 WIRE BURS DELETED (ITEM 10)	6-22-62	2	SL	LA	LA
A	1	ITEMS 4 THRU 9 WERE PX-100-034, ITEM 23 ADDED	5-16-62	1	MLF	LA	LA

UNLESS OTHERWISE SPECIFIED:  
DIMENSIONS ARE IN INCHES  
TOLERANCES ON FRACTIONS ± 1/64 DECIMALS ± .005 ANGLES ± 1/2°  
SCALE: MAXIMUM ALLOWABLE TOLERANCES HAVE BEEN DETERMINED AND ANY DEVIATIONS WILL BE CAUSE FOR REJECTION. REMOVE ALL BURRS & SHARP EDGES

REQ. PER UNIT	MODEL	SECTION	ASSY. NO.	DATE
1	HFS-1	3200		4-18-62

REQ.	ITEM	PART NO.	J. STRUMMER DESCRIPTION	SYMBOL
X	22	BS-100	SOLDER, SOFT	
2	21	RC20GF 223K	RESISTOR, CARBON 22K	R3216 R3224
1	20			
2	19	332K		R3225 R3230
1	18	151K		R3223
1	17	104K		R3220
1	16	RC20GF472K	RESISTOR, CARBON 4.7K	R3221
4	15	CN112A105K2	CAPACITOR, TUBULAR	C3212, 18 20, 30
1	14	CM15F101603	CAPACITOR, FIXED MICA	C3227
2	13	CM15C050J	CAPACITOR, FIXED MICA	C3217 C3226
2	12	CC-100-24	CAPACITOR, FIXED CERAMIC	C3219 C3222
2	11	IN463	DIODE, SILICON	CR3203 CR3204
4"	10	MWC 22 (7) U0	CABLE, INSULATION	BLACK
1 5/8"	9		U8	GRAY
1 1/2"	8		6	BLUE
3"	7		5	GREEN
2 1/8"	6		4	YELLOW
3 3/4"	5		3	ORANGE
1 5/2"	4	MWC 22 (7) U2	CABLE, INSULATION	RED
4	3	TE-116-3	LUG, SOLDER	
36	2	TE-168-4-C	TERMINAL, MINIATURE	
4	1	TE-108-13BN	STAND-OFF, RIVET-TYPE	

THE TECHNICAL MATERIEL CORP. MAMARONECK, NEW YORK			
TERMINAL BOARD & COMPONENT ASSY. AMPLIFIER & BALANCE MODULATOR (3200 DECK)			
STOCK SIZE			
MATERIAL			
TYPE & TEMPER	HEAT TREAT. SPEC.		
FINISH & SPEC. NO.		ELEC. DES. APP.	MECH. DES. APP.
USED ON		SHEET OF	
1	HFS-1	3200	4-18-62