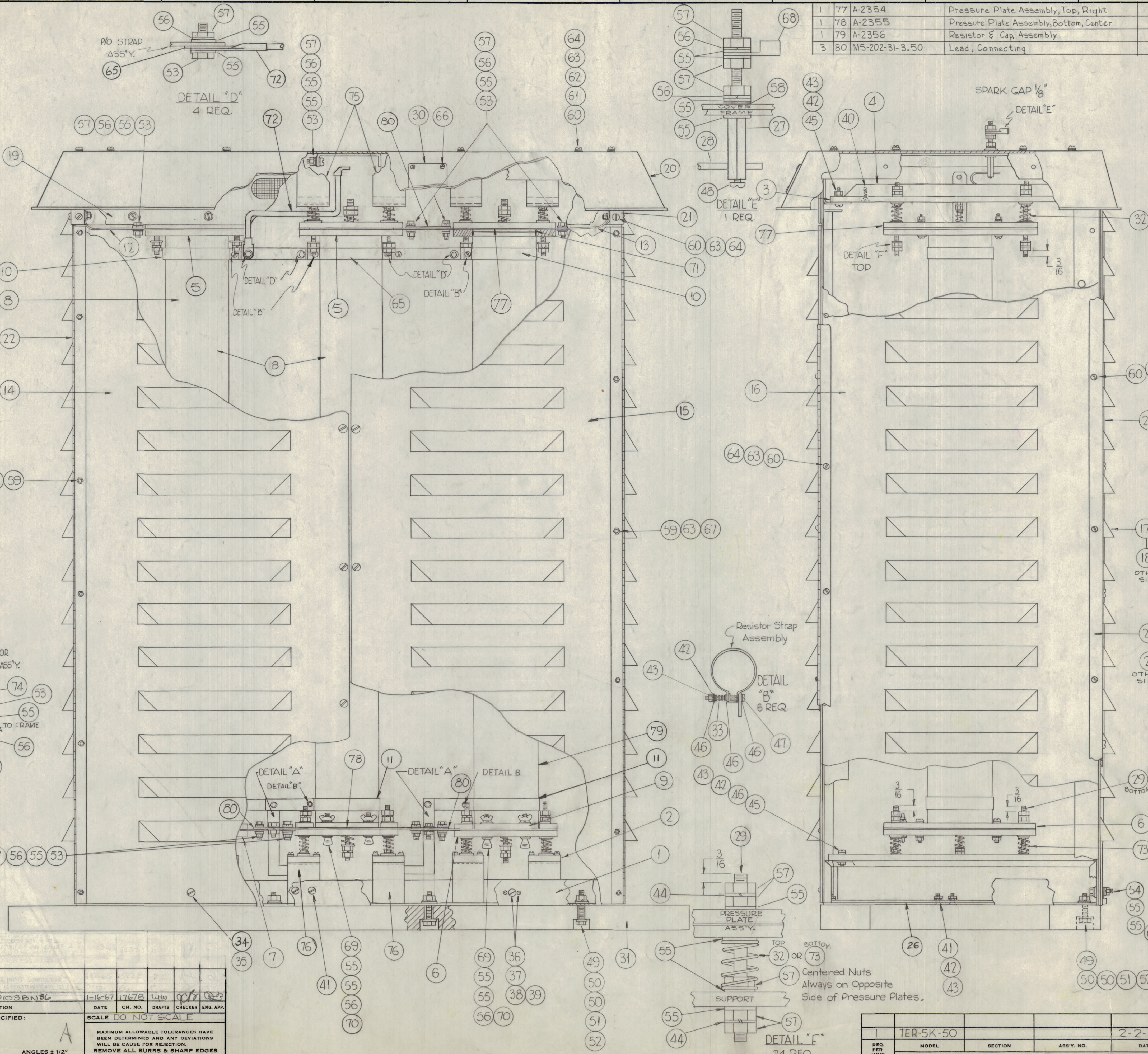


NOTICE TO PERSONS RECEIVING THIS DRAWING
 THE TECHNICAL MATERIEL CORPORATION claims proprietary right in the electrical disclosed herein. This drawing is issued in confidence or engineering information only and may not be reproduced or used to manufacture any part, even the same without permission from THE TECHNICAL MATERIEL CORPORATION to the user. This drawing is loaned for mutual assistance and is subject to recall at any time.
 Property of:
 THE TECHNICAL MATERIEL CORPORATION
 MAMARONECK, NEW YORK



1	77	A-2354	Pressure Plate Assembly, Top, Right
1	78	A-2355	Pressure Plate Assembly, Bottom, Center
1	79	A-2356	Resistor & Cap. Assembly
3	80	MS-202-31-3.50	Lead, Connecting

2	76	MS-2853	Pedestal, Support, Electrical Equip.
4	75	MS-2856	Bracket, Top Support
2	74	MS-1373	Lead, Ground, Bottom
12	73	SP-127-1	Spring, Compression
1	72	CA 954	LEAD, ELECTRICAL
6	71	IM-171-1	Insulation, Resistor
6	70	NT-110-2520BN	Nut, Wing Type
6	69	SCWS2520BN24P	Thumbscrew
2	68	TE-106	Terminal, Solderless
12	67	NTC0832BNL	Nut, Cap
4	66	SFBD440SN4	Screw, Thread Cutting
1	65	A-2357	Center Resistor, Top Strap Assembly
98	64	NTH0832BN10	Nut, Hex
110	63	LWE08MRN	Lockwasher, Ext.
27	62	GA-137-3	Gasket, Neoprene
27	61	PW08HBN	Washer, Flat
98	60	SCP0832BN12	Screw, Machine
12	59	SCP0832BN6	Screw, Machine
1	58	GA-104	Gasket, Neoprene
162	57	NTH2520BN14	Nut, Hex
21	56	LWT2MRN	Lockwasher, Int.
131	55	FW25HBN	Washer, Flat
1	54	SCHH2520BN16	Bolt, Hex
14	53	SCHH2520BN12	Bolt, Hex
12	52	NTH5013BN24	Nut, Hex
12	51	LWS50MRN	Lockwasher, Split
24	50	PWS0HBN	Washer, Flat
10	49	SCHH5013BN35	Bolt, Hex Head, 2-11/16 Long
1	48	SCP0632BN5	Screw, Machine
4	47	SCP1032BN40	Screw, Machine
50	46	PW10HBN	Washer, Flat
52	45	SCP1032BN20	Screw, Machine
48	44	LWS25MRN	Lockwasher, Split
89	43	NTH1032BN12	Nut, Hex
89	42	LWE10MRN	Lockwasher, Ext.
56	41	SCP1032BN8	Screw, Machine
20	40	SCP1032BN16	Screw, Machine
36	39	NTH0348BN6	Nut, Hex
36	38	LWS03MRN	Lockwasher, Split
36	37	SCP0348BN6	Screw, Machine
18	36	FS-102-1	Spring, "S" Type
18	35	FS-109-3	Ring, Stud Retaining
18	34	FS-110-4	Stud, Slotted Head
6	33	SP-118-S	Spring, Comp., Resistor Strap
12	32	SP-127-3	Spring, Compression, Guide
1	31	WD-126	Support, Mounting, Wood
1	30	NP-195	Nameplate, High Voltage
24	29	SM2520BNS.00	Stud, Plain, Spring Guide
1	28	PM-509	Rod, Spark Gap
1	27	PM-532	Post, Spark Rod
4	26	MS-1062	Plate, Gusset
1	25	MS-1052-2	Molding, Corner, Rear, Right
1	24	MS-1052-1	Molding, Corner, Rear, Left
1	23	MS-1053	Molding, Center, Rear
2	22	HI-103	Hinge, Door
2	21	MS-1049	Molding, Corner, Top
1	20	PX-442	Cover, Top
1	19	PX-367	Panel, Front, Top
1	18	PX-365-2	Panel, Rear, Right
1	17	PX-365-1	Panel, Rear, Left
2	16	PX-366	Panel, Side
1	15	PX-368-2	Door, Front, Right
1	14	PX-368-1	Door, Front, Left
1	13	MS-1372-2	Lead, Ground, Top, Right
1	12	MS-1372-1	Lead, Ground, Top, Left
3	11	A-1585	Resistor Bottom Strap Assembly
2	10	A-1586	Resistor Top Strap Assembly
3	9	PX-441	Plate, Locking, Inside, Bottom
2	8	A-1632	Resistor and Cap Assembly
1	7	A-1635-2	Pressure Plate Assembly, Bottom, Left
1	6	A-1635-1	Pressure Plate Assembly, Bottom, Right
2	5	A-1634	Pressure Plate Assembly, Top
6	4	PX-359	Brace, Resistor Support
6	3	PX-360	Support, Resistor, Top
6	2	PX-362	Insulator, Bottom Pedestal
1	1	A-1422	Frame Assembly

A-2358 D

ITEM 47 WAS SCRP03BN6	DATE 1-16-67	CHK. NO. 17678	DRAFTS LHM	CHECKER [Signature]	ENG. APP. [Signature]
UNLESS OTHERWISE SPECIFIED: SCALE DO NOT SCALE					
DIMENSIONS ARE IN INCHES					
TOLERANCES ON FRACTIONS ± 1/64 DECIMALS ± .005 ANGLES ± 1/2°					
MAXIMUM ALLOWABLE TOLERANCES HAVE BEEN DETERMINED AND ANY DEVIATIONS WILL BE CAUSE FOR REJECTION. REMOVE ALL BURRS & SHARP EDGES					

REQ. PER UNIT	MODEL	SECTION	ASS'Y. NO.	DATE
1	TER-5K-50			2-2-62
USED ON				

REQ. ITEM	PART NO.	DESCRIPTION	SYMBOL
THE TECHNICAL MATERIEL CORP. MAMARONECK, NEW YORK			
STOCK SIZE			
TER-5090-50 MAIN ASSEMBLY			
MATERIAL			
DRAWN RUZZO CHECKED [Signature] FINAL APPROVAL [Signature]			
TYPE & TEMPER HEAT TREAT. SPEC.			
FINISH & SPEC. NO.			
ELEC. DES. APP. MECH. DES. APP. SHEET OF			
A-2358 D			