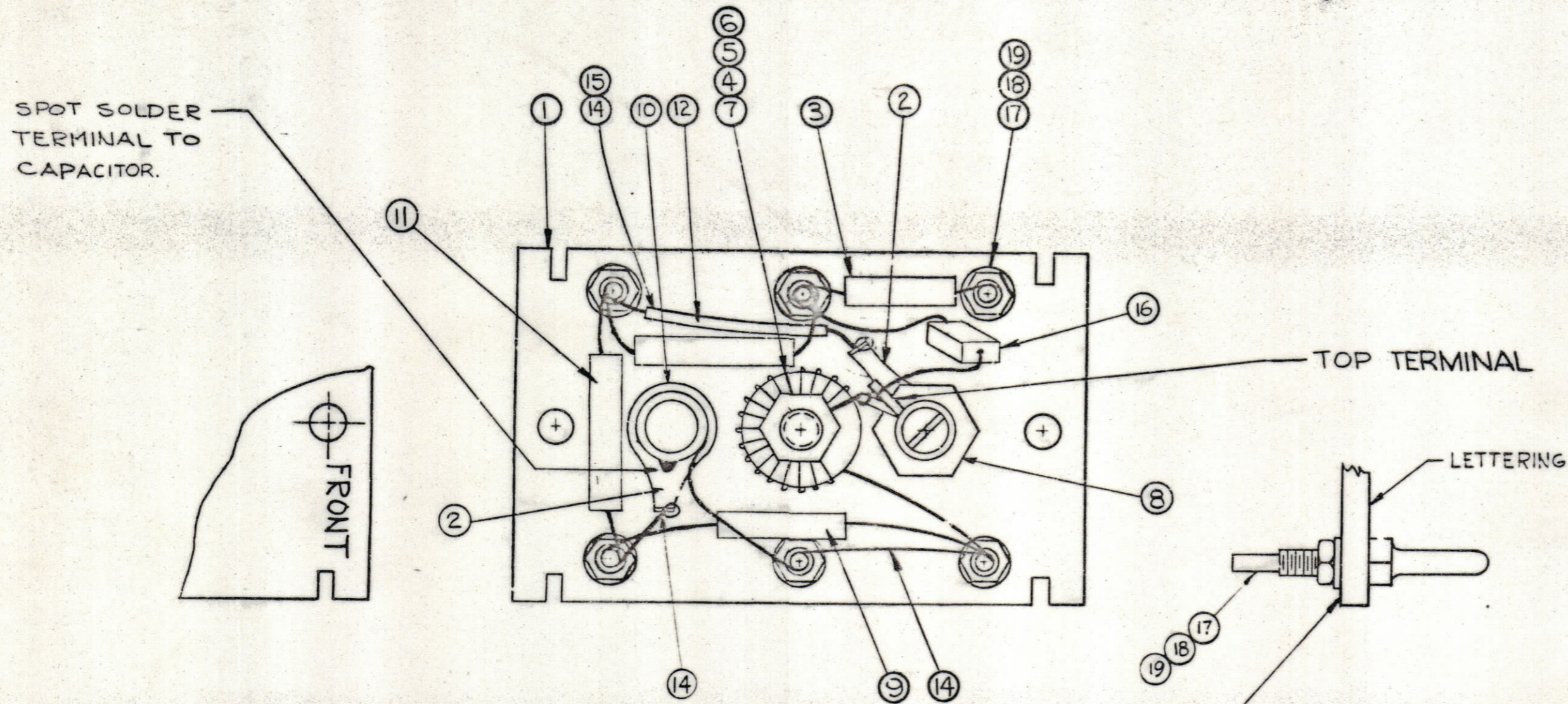


NOTICE TO PERSONS RECEIVING THIS DRAWING

THE TECHNICAL MATERIEL CORPORATION claims proprietary right in the material disclosed herein. This drawing is issued in confidence for engineering information only and may not be reproduced or used to manufacture anything shown hereon without permission from THE TECHNICAL MATERIEL CORPORATION to the user. This drawing is loaned for mutual assistance and is subject to recall at any time.

Property of:
THE TECHNICAL MATERIEL CORPORATION
MAMARONECK, NEW YORK



COMPONENTS TO BE ASSEMBLED ON REAR OF BOARD, OPPOSITE SIDE OF LETTERING (SEE LD-1114)

6	19	NTH0440BNG	NUT, HEXAGON	
6	18	LWS04MRN	LOCKWASHER, SPRING TYPE	
6	17	TE-191	TERMINAL	
1	16	CM20F821G	CAPACITOR, 820MMF	C1070
X	15	PX-104-1-.034	INSULATION, SLEEVING *20	
X	14	WL-100-6	WIRE, BUSS *20 AWG	
X	13	BS-100	SOLDER, SOFT	
1	12	CM20F152G	CAPACITOR, 1500MMF	C1071
1	11	CM20F751G	CAPACITOR, 750MMF	C1072
1	10	CV-110-3	CAPACITOR, VARIABLE .9-16	C1073
1	9	CM15F201G	CAPACITOR, 200MMF	C1074
1	8	AC-168	COIL, R.F. TUNED	L1021
1	7	CL-299	COIL, R.F. ASSEMBLY	L1022
1	6	FW-101-1	FLATWASHER, NYLON	
1	5	NT-137-0632	NUT, NYLON	
1	4	SC-143-0632-B-10	SCREW, NYLON	
1	3	CM15C40U	CAPACITOR, 47MMF	C1075
2	2	TE-104-4	LUG, GROUND	
1	1	PX-650 (LD-1114)	TERMINAL BOARD, OSC. (LETTERED)	A1004

REQ. ITEM	PART NO.	ANGER	DESCRIPTION	SYMBOL
THE TECHNICAL MATERIEL CORP. MAMARONECK, NEW YORK				
AX-370 ASS'Y (OSC. BOARD BAND *2)				
MATERIAL				
ab 110c B				
DRAWN (CHECKED) FINAL APPROVAL				
J. ANGER A-2364 B				
FINISH & SPEC. NO.				
ELEC. DES. APP. MECH. DES. APP. SHEET OF				

B	B2	ITEM (7) WAS A-2488, (8) WAS A-2496	2-7-63	8094				
A		COMPLETELY REVISED	6-29-62	1				
SYM	ZONE	DESCRIPTION	DATE	CH. NO.	DRAFTS	CHECKER	ENG. APP.	
UNLESS OTHERWISE SPECIFIED:			SCALE DO NOT SCALE					
DIMENSIONS ARE IN INCHES			MAXIMUM ALLOWABLE TOLERANCES HAVE BEEN DETERMINED AND ANY DEVIATIONS WILL BE CAUSE FOR REJECTION. REMOVE ALL BURRS & SHARP EDGES					
TOLERANCES ON								
FRACTIONS ± 1/64			DECIMALS ± .005			ANGLES ± 1/2°		

1	HFR-11T		A-2532	2-2-62
REQ. PER UNIT	MODEL	SECTION	ASSY. NO.	DATE
USED ON				