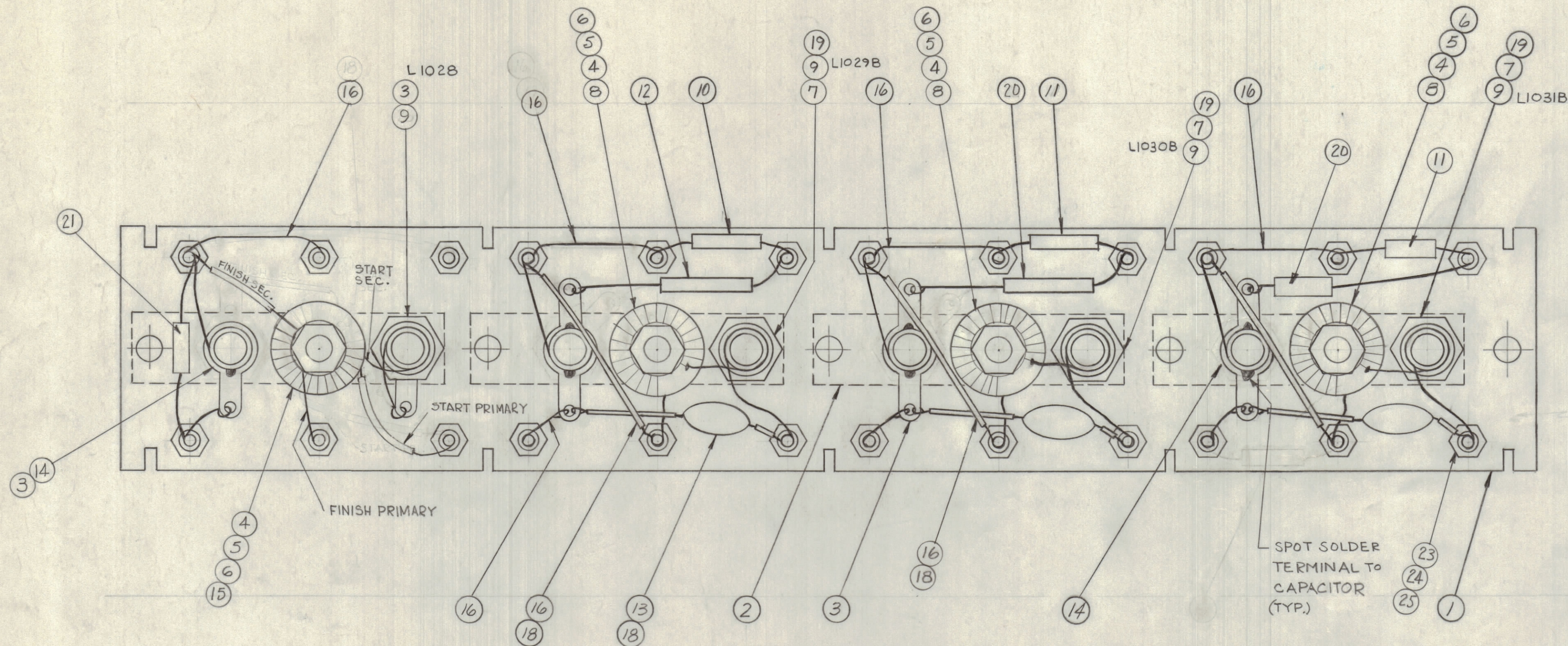


NOTICE TO PERSONS RECEIVING THIS DRAWING
 THE TECHNICAL MATERIEL CORP. 1101 claims
 proprietary right in the here disclosed herein.
 This drawing is issued in confidence for engineering
 information only and may not be reproduced or used
 to manufacture anything shown hereon without per-
 mission from THE TECHNICAL MATERIEL CORPORA-
 TION to the user. This drawing is loaned for mutual
 assistance and is subject to recall at any time.

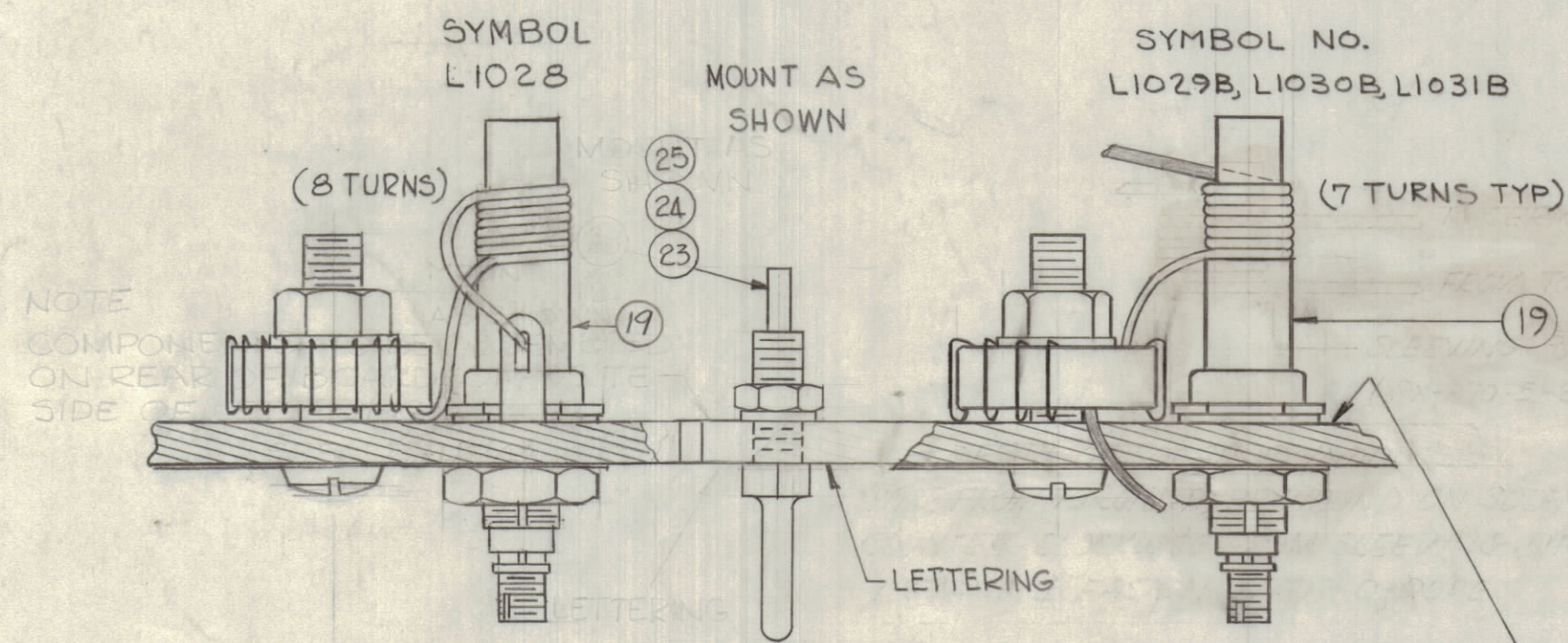
Property of:
 THE TECHNICAL MATERIEL CORPORATION
 MAMARONECK, NEW YORK



NOTE:
 COMPONENTS TO BE ASSEMBLED
 ON REAR OF BOARD, OPPOSITE SIDE
 OF LETTERING. (SEE LD-1124)

PROCEDURE FOR WINDING TRIM COIL

- 1 - PUSH ITEM 19 SLEEVING ON COIL FORM AS SHOWN.
- 2 - WIND LONG LEAD FROM TOROID COUNTER CLOCKWISE 7 TURNS TIGHTLY AGAINST SLEEVING, NO OF TURNS AS SHOWN.
- 3 - STRIP ENAMEL FROM END NEAR TERMINAL WRAP & SOLDER SECURELY TO TERMINAL SHOWN.
- 4 - COAT WITH GLI02 Q-MAX. TO HOLD TURNS IN PLACE.



NOTE
 COMPONENTS TO BE ASSEMBLED
 ON REAR OF BOARD, OPPOSITE
 SIDE OF LETTERING
 (SEE LD-1124)

REQ.	ITEM	PART NO.	DESCRIPTION	SYMBOL
1	26	A-2472	COIL, R.F. TUNED	L1028
24	25	NTH0440BNG	NUT, HEX.	
24	24	LWS04MRN	LOCKWASHER, SPRING TYPE	
24	23	TE-191	TERMINAL	
X	22	GL-102	Q-MAX.	
1	21	CM15CB20G	CAPACITOR, 82 MMF	C1096
2	20	CM30F182G	CAPACITOR, 1800 MMF	C1104 C1108
4	19	PX-370-2-8	INSULATION, SLEEVING, 5/16 LG	
X	18	PX-104-1-.034	INSULATION, SLEEVING	
X	17	BS-100	SOLDER, SOFT	
X	16	WL-100-6	WIRE, BUSS, #20 AWG	
1	15	TZ-111	TRANSFORMER, R.F.	T1005
4	14	CV-110-3	CAPACITOR, VARIABLE	
3	13	CC-100-15	CAPACITOR, .005 MF	
1	12	CM20F102G	CAPACITOR, 1000 MMF	C1100
2	11	CM15F161G	CAPACITOR, 160 MMF	C1103 C1107
1	10	CM15F181G	CAPACITOR, 180 MMF	C1099
4	9	CF-134-5-E	COIL FORM	
3	8	A-2477	COIL, R.F. ASS'Y	
3	7	LWE-10-MRN	LOCKWASHER, EXT.	
4	6	FW-101-1	FLATWASHER, NYLON	
4	5	NT-137-0632	NUT, NYLON	
4	4	SC-143-0632-B-10	SCREW, NYLON	
8	3	TE-104-4	LUG, GROUND	
4	2	MS-2897	STRAP, GROUND	
1	1	PX-649 (LD-1124)	TERMINAL BOARD, RF (LETTERED)	A1007

C1097, C1101, C1105
 C1095, C1098, C1102, C1106
 L1029A, L1030A, L1031A

SYM	ZONE	DESCRIPTION	DATE	CH. NO.	DRAFTS	CHECKER	ENG. APP.
D	C2	ITEM (21) WAS CM15F101G, 100 MMF	11-14-62	7628	ASB	WDE	WDE
B9	10	PICTORIAL SYMBOL L1028 ADDED	8-22-62	7139	BDL	WDE	WDE
B5	C3	ITEMS (7) & (8) WERE REV. 2 EX-ITEM (21) WAS CM15C360T					
C2	10	ITEM 201A-2492 DELETED					
B10	D10	ITEM (8) REMOVED (LEFT TOP CORNER) WIRING CLARIFIED ON ITEM (5) WIRING CLARIFIED					
B2	B2	ITEM 1 WAS LWE10M30, ITEM 15 WAS A-2527	7-25-62	6945	SEB	WDE	WDE
A	B1	COMPLETELY REVISED	6-29-62				

UNLESS OTHERWISE SPECIFIED:
 DIMENSIONS ARE IN INCHES
 TOLERANCES ON
 FRACTIONS ± 1/64 DECIMALS ± .005 ANGLES ± 1/2°
 SCALE
 MAXIMUM ALLOWABLE TOLERANCES HAVE BEEN DETERMINED AND ANY DEVIATIONS WILL BE CAUSE FOR REJECTION. REMOVE ALL BURRS & SHARP EDGES

REQ. PER UNIT	MODEL	SECTION	ASS'Y. NO.	DATE	TYPE & TEMPER	HEAT TREAT. SPEC.
1	HFR-1/T		A-2532	1-31-62		

THE TECHNICAL MATERIEL CORP. MAMARONECK, NEW YORK			
AX-364 ASS'Y R.F. BOARD BAND #4			
DRAWN	CHECKED	FINAL APPROVAL	
J. ANGER		A-2374	
ELEC. DES. APP.		MECH. DES. APP.	
SHEET		OF	

A-2374 D