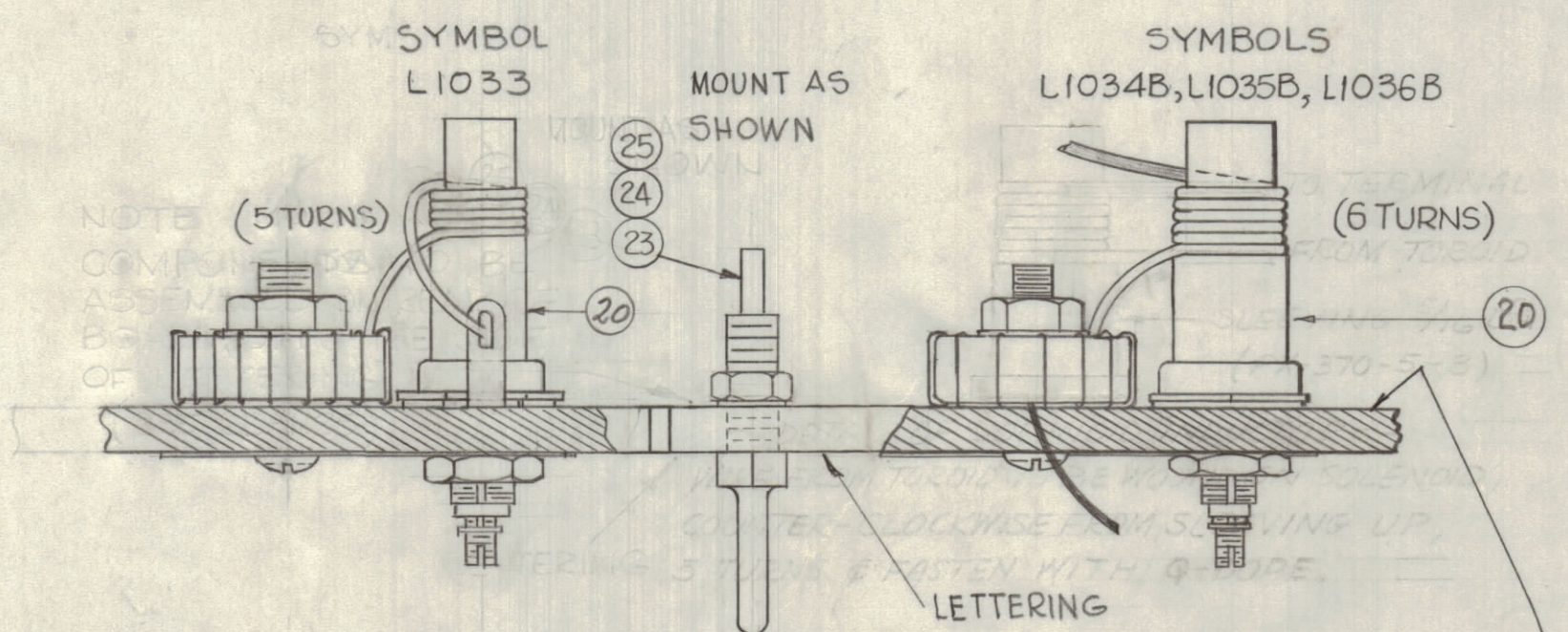
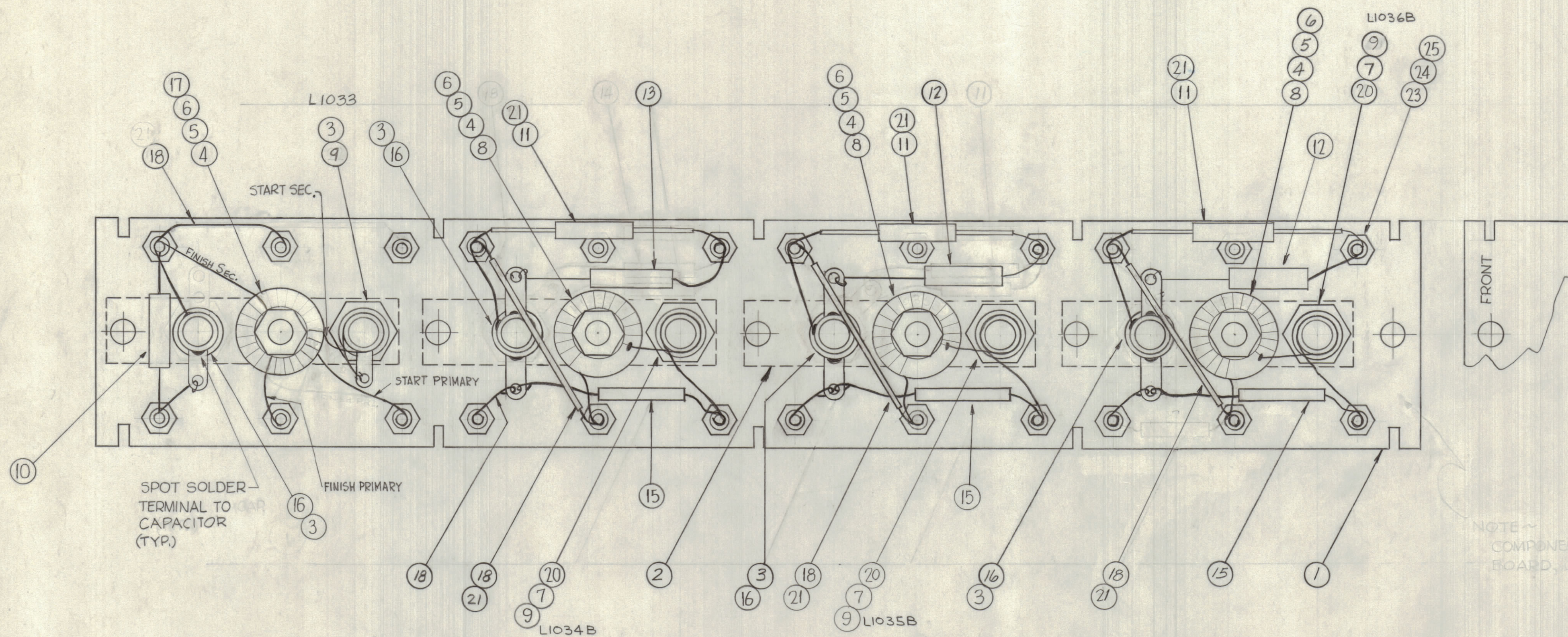


NOTICE TO PERSONS RECEIVING THIS DRAWING

THE TECHNICAL MATERIEL CORPORATION claims proprietary right in the material disclosed herein. This drawing is issued in confidence for engineering information only and may not be re-reduced or used to manufacture any thing shown herein without permission from THE TECHNICAL MATERIEL CORPORATION to the user. This drawing is loaned for mutual assistance and is subject to recall at any time.

Property of:
THE TECHNICAL MATERIEL CORPORATION
MAMARONECK, NEW YORK



PROCEDURE FOR WINDING TRIM COIL
 1~ PUSH ITEM 20 SLEEVING ON COIL FORM AS SHOWN.
 2~ WIND LONG LEAD FROM TOROID COUNTER CLOCKWISE 6 TURNS TIGHTLY AGAINST SLEEVING, NO OF TURNS AS SHOWN
 3~ STRIP ENAMEL FROM END NEAR TERMINAL WRAP & SOLDER SECURELY TO TERMINAL SHOWN.
 4~ COAT WITH GL-102 (ITEM 14) TO HOLD TURNS IN PLACE.

REQ. ITEM	PART NO.	DESCRIPTION	SYMBOL
24	25	NTH0440BNG	NUT, HEX.
24	24	LWS04MRN	LOCKWASHER, SPRING TYPE
24	23	TE-191	TERMINAL
X	22	---	DELETED
X	21	PX-104-1-.034	INSULATION, SLEEVING
4	20	PX-370-2-8	INSULATION, SLEEVING, 5/16 LG.
X	19	BS-100	SOLDER, SOFT
X	18	WL-100-6	WIRE, BUSS #20 AWG.
1	17	TZ-112	TRANSFORMER
4	16	CV-110-3	CAPACITOR, VARIABLE
3	15	CM30F152G	CAPACITOR, 1500 MMF
7	14	GL-102	Q-MAX.
1	13	CM15F471G	CAPACITOR, 470 MMF
2	12	CM20F681G	CAPACITOR, 680 MMF
3	11	CM15C390J	CAPACITOR, 39 MMF
1	10	CM15C240J	CAPACITOR, 24 MMF
4	9	CF-134-5-E	COIL FORM
3	8	A-247B	COIL, R.F. ASS'Y.
3	7	LWE 10 MRN	LOCKWASHER, EXT.
4	6	FW-101-1	FLATWASHER, NYLON
4	5	NT-137-0632	NUT, NYLON
4	4	SC-143-0632-B-10	SCREW, NYLON
8	3	TE-104-4	LUG, GROUND
4	2	MS-2897	STEAP, GROUND
1	1	PX-649(LD-1125)	TERMINAL BOARD RF (LETTERED)

SYM	ZONE	DESCRIPTION	DATE	CH. NO.	DRAFTS	CHECKER	ENG. APP.
D	B2	ITEM (10) WAS CM15C470J, 47 MMF	11-14-62	7628	CS		
C	B10-9	ITEM (22) AC-165 DELETED	8-2-62	7139	GOL		
B	B2-C2	ITEM (10) WAS CM15C470J, 47 MMF	7-25-62	6945	EE		
A	B2-C2	ITEM (10) WAS CM15C470J, 47 MMF	6-29-62	1	SYM		

DIMENSIONS ARE IN INCHES
 TOLERANCES ON FRACTIONS ± 1/64 DECIMALS ± .005 ANGLES ± 1/2°
 SCALE: MAXIMUM ALLOWABLE TOLERANCES HAVE BEEN DETERMINED AND ANY DEVIATIONS WILL BE CAUSE FOR REJECTION. REMOVE ALL BURRS & SHARP EDGES

REQ. PER UNIT	MODEL	SECTION	ASS'Y. NO.	DATE
1	HRF-1/T		A-2532	2-1-62

THE TECHNICAL MATERIEL CORP. MAMARONECK, NEW YORK			
AX-365 ASS'Y RF BOARD BAND #5			
DRAWN	CHECKED	FINAL APPROVAL	
J. ANGER		A-2375-1 D	
ELEC. DES. APP.		MECH. DES. APP.	
SHEET		OF	

A-2375 D