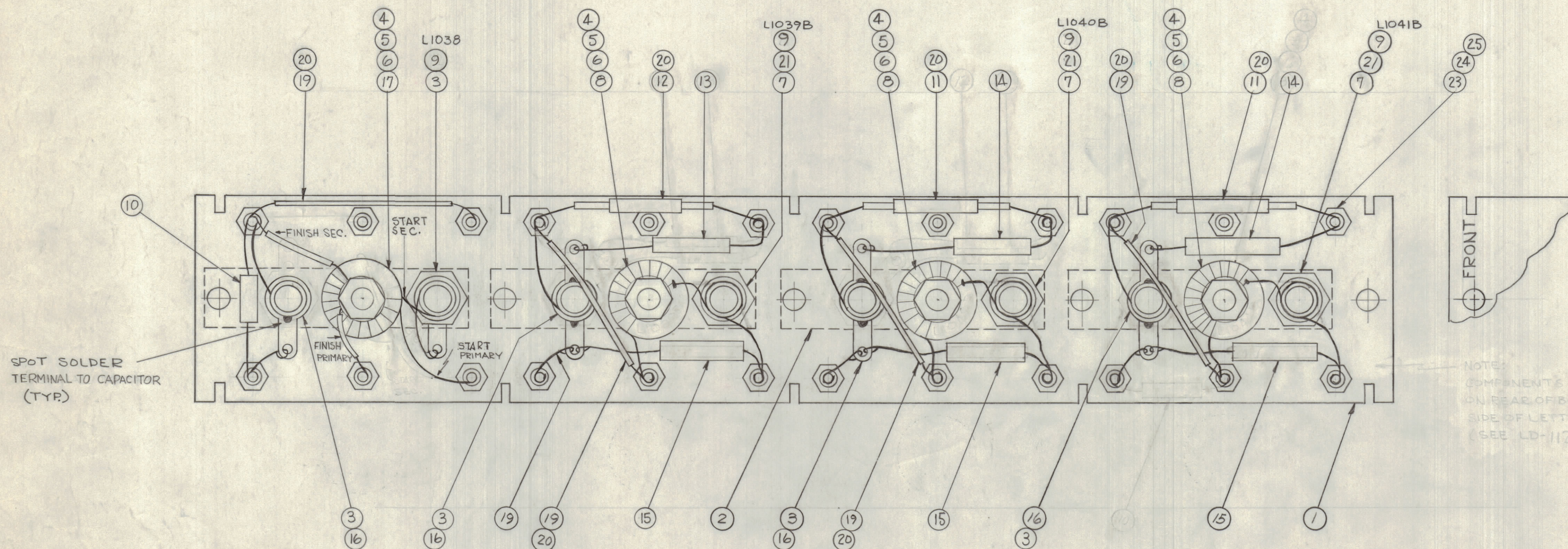


NOTICE TO PERSONS RECEIVING THIS DRAWING

THE TECHNICAL MATERIEL CORPORATION claims proprietary right in the material disclosed herein. This drawing is issued in confidence for engineering information only and may not be reproduced or used to manufacture any thing shown hereon without permission from THE TECHNICAL MATERIEL CORPORATION to the user. This drawing is loaned for mutual assistance and is subject to recall at any time.

Property of:
THE TECHNICAL MATERIEL CORPORATION
MAMARONECK, NEW YORK

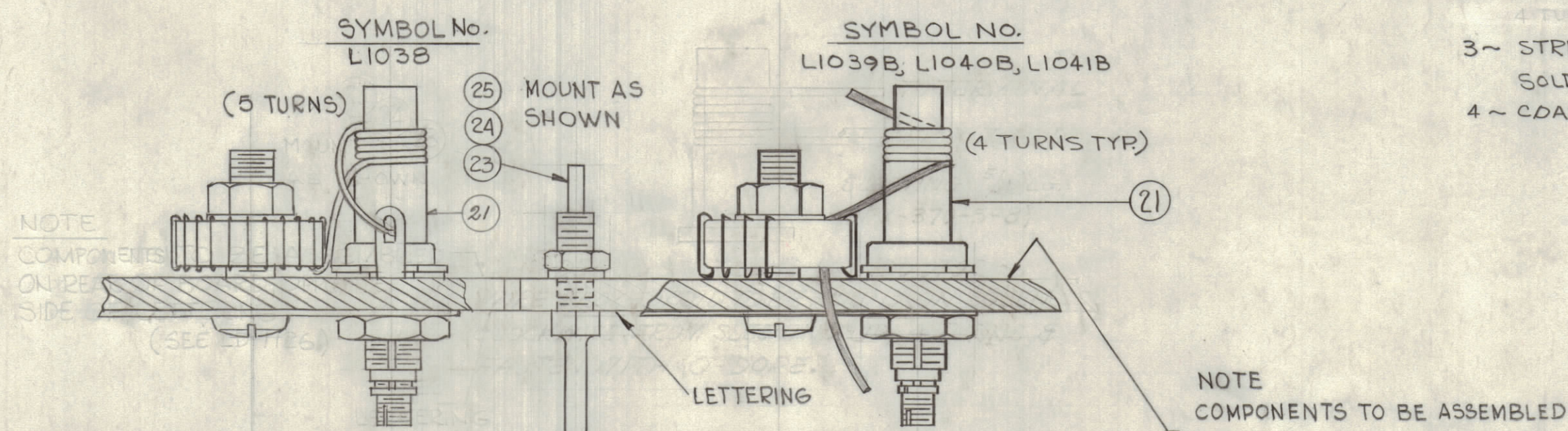


SPOT SOLDER TERMINAL TO CAPACITOR (TYP)

NOTE: COMPONENTS TO BE ASSEMBLED ON REAR OF BOARD, OPPOSITE SIDE OF LETTERING. (SEE LD-1126)

PROCEDURE FOR WINDING TRIM COIL

- 1~ PUSH ITEM 21 SLEEVING ON COIL FORM AS SHOWN
- 2~ WIND LONG LEAD FROM TOROID COUNTER CLOCKWISE TIGHTLY AGAINST SLEEVING, NO OF TURNS AS SHOWN.
- 3~ STRIP ENAMEL FROM END NEAR TERMINAL WRAP & SOLDER SECURELY TO TERMINAL SHOWN.
- 4~ COAT WITH GL102, Q-MAX. TO HOLD TURNS IN PLACE



NOTE: COMPONENTS TO BE ASSEMBLED ON REAR OF BOARD, OPPOSITE SIDE OF LETTERING (SEE LD-1126)

NOTE: COMPONENTS TO BE ASSEMBLED ON REAR OF BOARD, OPPOSITE SIDE OF LETTERING (SEE LD-1126)

X	26	GL-102	Q-MAX.	
24	25	NTH0440BNG	NUT, HEX	
24	24	LWS04MRN	LOCKWASHER, SPRING TYPE	
24	23	TE-191	TERMINAL	
X	22	---	DELETED	
4	21	PX-370-2-8	INSULATION, SLEEVING, 5/16 LG.	
X	20	PX-104-1-.034	INSULATION, SLEEVING, #20	
X	19	WL-100-6	WIRE, BUSS, #20 AWG.	
X	18	BS-100	SOLDER, SOFT	
1	17	TZ-113	TRANSFORMER	T1007
4	16	CV-110-3	CAPACITOR, VARIABLE	
3	15	CM30F152G	CAPACITOR, 1500 MMF	
2	14	CM20F751G	CAPACITOR, 750 MMF	C1143, C1147
1	13	CM15F511G	CAPACITOR, 510 MMF	C1139
1	12	CM15F101G	CAPACITOR, 100 MMF	C1138
2	11	CM15F910G	CAPACITOR, 91 MMF	C1142, C1145
1	10	CM15B180K	CAPACITOR, 18 MMF	C1135
4	9	CF-134-5-E	COIL, FORM	
3	8	A-2479	COIL, R.F. ASS'Y.	
3	7	LWE-10-MRN	LOCKWASHER, EXT.	
4	6	FW-101-1	FLATWASHER, NYLON	
4	5	NT-137-0632	NUT, NYLON	
4	4	SC-143-0632-B-10	SCREW, NYLON	
8	3	TE-104-4	LUG, GROUND	
4	2	MS-2697	STRAP, GROUND	
1	1	PX-649(LD-1126)	TERMINAL BOARD R.F.(LETTERED)	A1011

E	B2	ITEM(11) WAS CM15F9103	2-8-63	8112				
D	B2	ITEM(10) WAS CM15C360J(36MMF)	11-14-62	7628				
C	C2	ITEM(22) AC-100 DELETED						
	B9, D10	PICTORIAL SYMBOL NO. L1038 ADDED						
	B2	ITEM(19) REMOVED (LEFT TOP CORNER) WIRING CLARIFIED						
	B2	ITEM(17) WIRING CLARIFIED						
	B2	ITEM(18) & (20) WERE SWAPPED. ITEM(10) WAS CM15C200G						
	B2, C2	ITEM(1) WAS LWE180K, ITEM(2) WAS A-2529, ITEM(3) WAS A-2494	7-25-64	6945				
	B	COMPLETELY REVISED	6-29-64					
SYM	ZONE	DESCRIPTION	DATE	CH. NO.	DRAFTS	CHECKER	ENG. APP.	

UNLESS OTHERWISE SPECIFIED:
DIMENSIONS ARE IN INCHES
TOLERANCES ON FRACTIONS ± 1/64 DECIMALS ± .005 ANGLES ± 1/2°
SCALE: MAXIMUM ALLOWABLE TOLERANCES HAVE BEEN DETERMINED AND ANY DEVIATIONS WILL BE CAUSE FOR REJECTION. REMOVE ALL BURRS & SHARP EDGES

1	HRF-11T		A-2532	2-1-62	
REQ. PER UNIT	MODEL	SECTION	ASS'Y. NO.	DATE	

THE TECHNICAL MATERIEL CORP. MAMARONECK, NEW YORK	
AX-366 ASS'Y (R.F. BOARD BAND #6)	
DRAWN	CHECKED
J. LANGER	BP
A-2376	
ELEC. DES. APP.	MECH. DES. APP.
SHEET OF	

A-2376 E