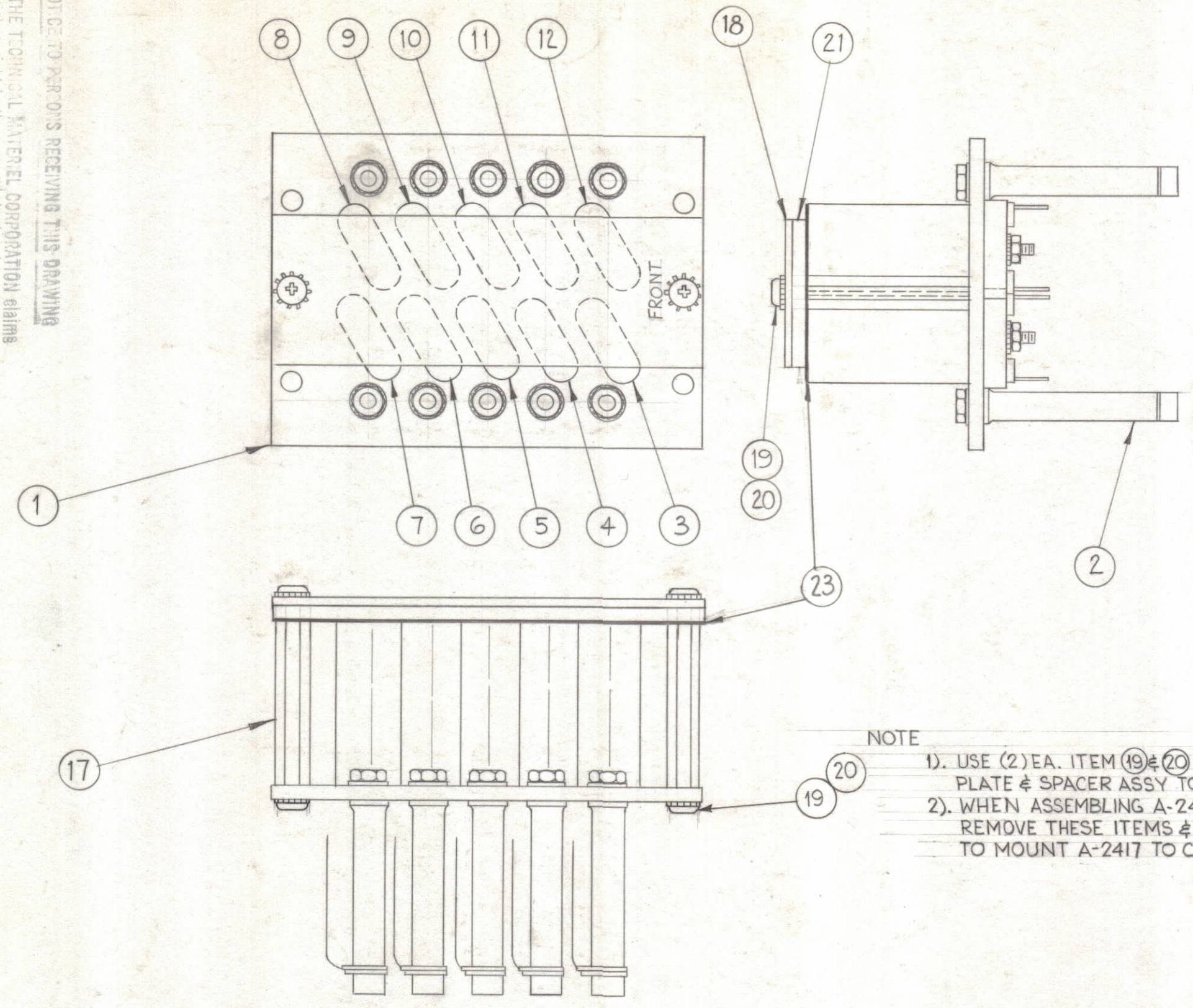


REVISIONS					
ZONE	SYM	DESCRIPTION	DATE	E.M.N. NO.	APPD
D2, C1	A	ITEM (22) ADDED, SYMBOLS REVERSED, ITEM (18) REVERSED	7-2-62	7538	[Signature]
D2, C2	B	ITEM (16) WAS NTH0440BN8; ITEM (14) WAS SCBP0440BN8	3-22-63	8612	[Signature]
E2	B	ITEM (23) ADDED	4-25-63	8891	[Signature]
D3, E4	C	ITEMS (19) & (20) QTY WAS 2, NOTE ADDED			



NOTE
 1). USE (2) EA. ITEM (19) & (20) TO RETAIN PLATE & SPACER ASSY TO BOARD.
 2). WHEN ASSEMBLING A-2417 INTO UNIT, REMOVE THESE ITEMS & USE THEM TO MOUNT A-2417 TO CHASSIS

QTY	ITEM	PART NUMBER	DESCRIPTION	SYMBOL
1	23	MS-3122	PLATE, CRYSTAL, GROUND	
10	22	WA-109-17	WASHER, FIBER	
1	21	RY-121-20-6-3.625	STRIP, SPONGE RUBBER	
4	20	SCBP0632BN8	SCREW, MACHINE	
4	19	LWE06MRN	LOCKWASHER, EXTERNAL	
1	18	MS-2950 (LD-1078)	LETTERING, PLATE, CRYSTAL TIEDOWN	
2	17	TE0632BN6H	SPACER, THREADED	
10	16	NTH0440BN6	NUT, HEX.	
10	15	LWE04MRN	LOCKWASHER, EXTERNAL	
10	14	SCFP0440BN8	SCREW, MACHINE	
10	13	TS-104-2	SOCKET, CRYSTAL	
1	12	CR-109-15	CRYSTAL UNIT, QUARTZ	Y3101
1	11	14		Y3102
1	10	13		Y3103
1	9	12		Y3104
1	8	11		Y3105
1	7	10		Y3106
1	6	9		Y3107
1	5	8		Y3108
1	4	7		Y3109
1	3	CR-109-6	CRYSTAL UNIT, QUARTZ	Y3110
10	2	CV-108-4	CAPACITOR, VARIABLE, PISTON TYPE	
1	1	PX-658	BOARD, MOUNTING CRYSTALS	

J. STRUMER LIST OF MATERIAL			
MATERIAL		THE TECHNICAL MATERIEL CORP. MAMARONECK, NEW YORK	
FINISH		TITLE CRYSTAL & CAPACITOR BOARD ASS'Y. #1 (3100 DECK)	
UNLESS OTHERWISE SPECIFIED DIMENSIONS ARE IN INCHES AND INCLUDE CHEMICALLY APPLIED OR PLATED FINISHES	DRAWN W.A. Franco	DATE 6-15-62	FINAL APPROVAL [Signature]
DECIMALS .X ± .05 .XX ± .01 .XXX ± .005	CHECKED [Signature]	DATE 6-22-62	DATE 6-22-62
FRACTIONS ± 1/64 ANGLES ± 0° 30'	ELECT. DES. [Signature]	DATE 6-22-62	DATE 6-22-62
TOLERANCES	MECH. DES. [Signature]	DATE 6-22-62	DATE 6-22-62
NOTES		A-2417	
THE CONTENTS OF THIS DRAWING ARE THE EXCLUSIVE PROPERTY OF THE TECHNICAL MATERIEL CORP. ITS UNAUTHORIZED USE OR REPRODUCTION IN WHOLE OR IN PART IS STRICTLY FORBIDDEN.		SHEET 1	

NOTICE TO PERSONS RECEIVING THIS DRAWING
 THE TECHNICAL MATERIEL CORPORATION claims proprietary right in the material disclosed herein. This drawing is issued in confidence for engineering information only and may not be reproduced or used to manufacture anything shown hereon without permission from THE TECHNICAL MATERIEL CORPORATION to the user. This drawing is loaned for mutual assistance and is subject to recall at any time.

Property of:
 THE TECHNICAL MATERIEL CORPORATION
 MAMARONECK, NEW YORK