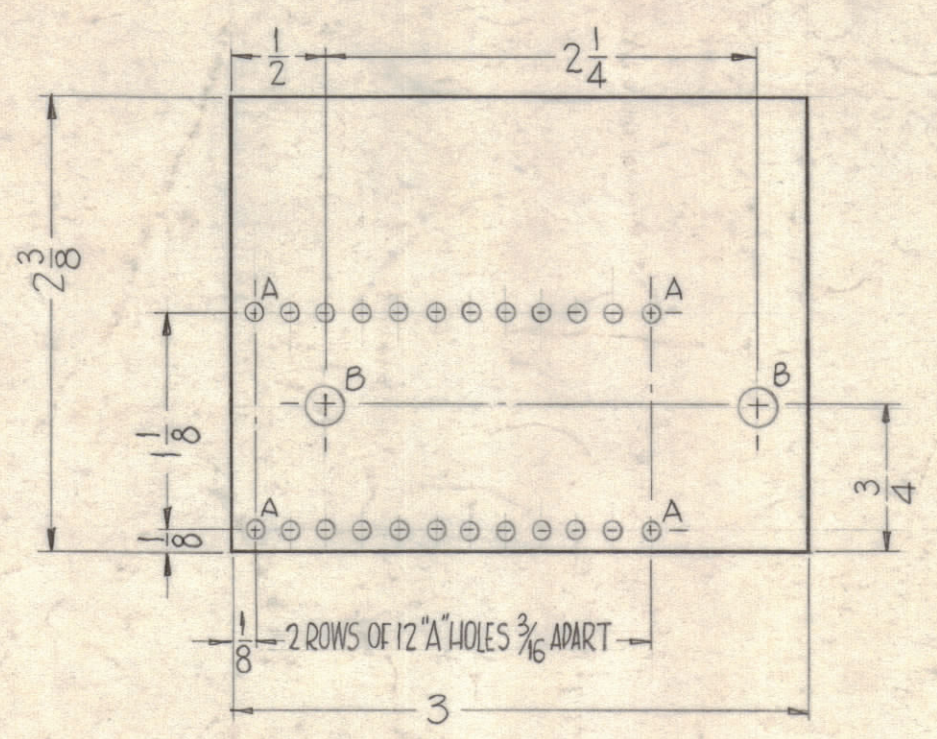
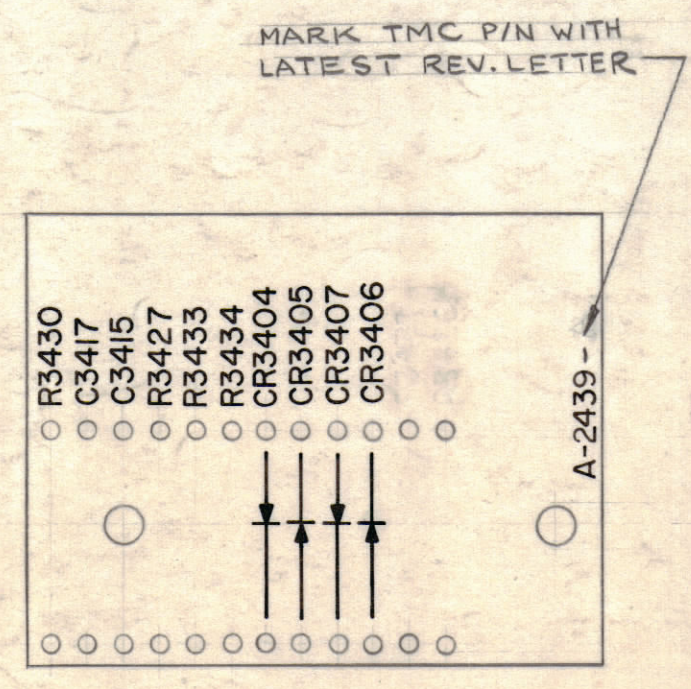


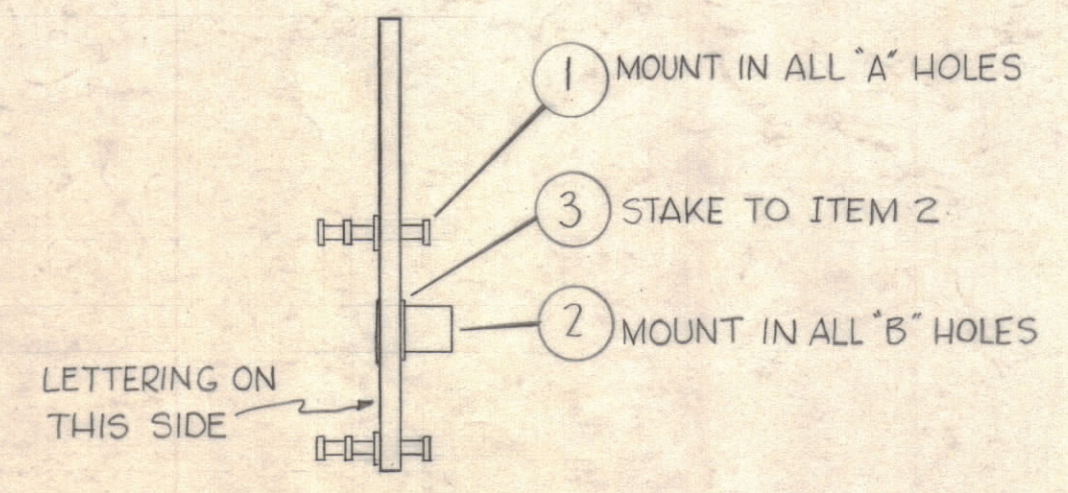
H
G
F
E
D
C
B
A



HOLE	DESCRIPTION	REQ.
A	.079 DIA.	24
B	.189 DIA.	2



1/8 HIGH BLACK LUSTERLESS, GOTHIC LETTERING.
MARKING PROCESS: AS PER TMC SPECIFICATION S-727



STAGE 1 ~ A-2439-1 ~ MACHINING ~ Material - 3/32 Thk. Phenolic XXXP Natural

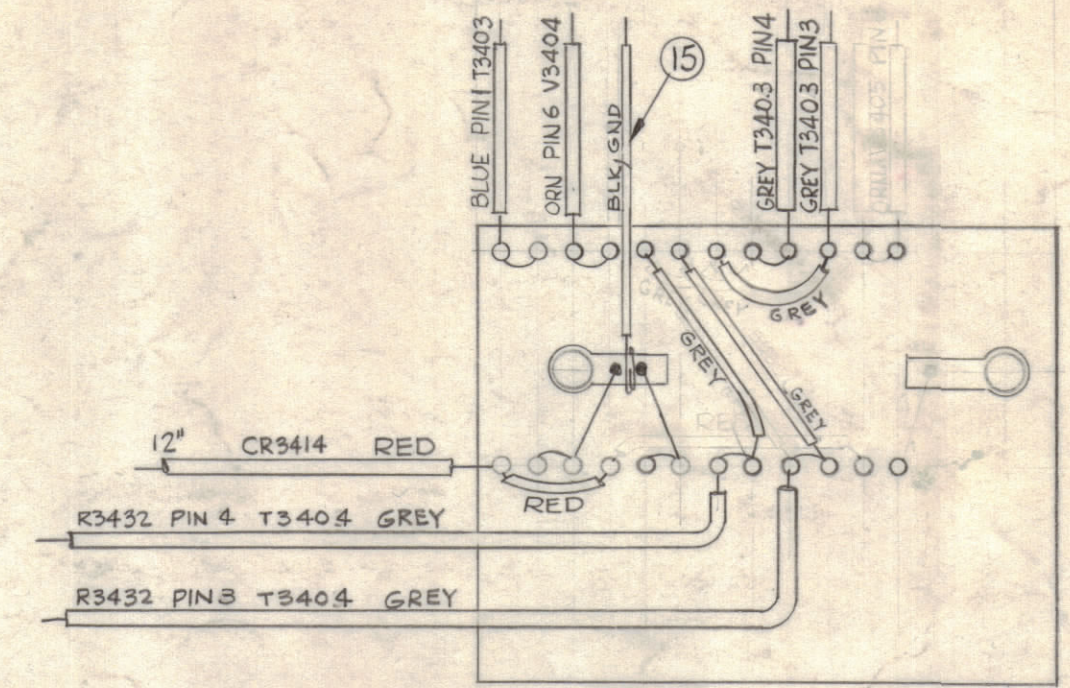
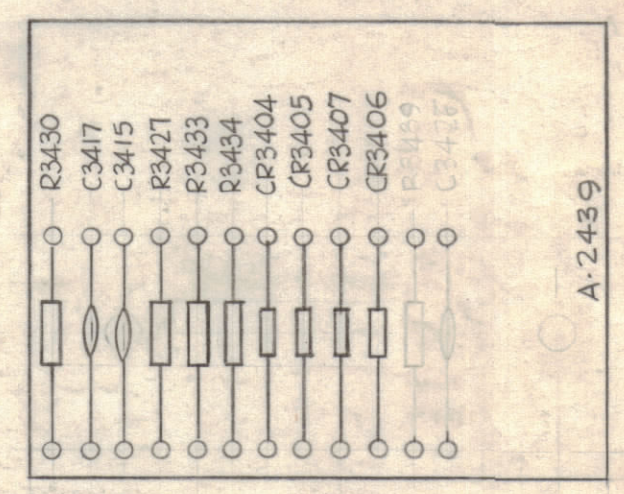
STAGE-2 ~ A-2439-2 ~ LETTERING

STAGE-3 ~ A-2439-3 ~ SUB-ASSEMBLY

NOTICE TO PERSONS RECEIVING THIS DRAWING

THE TECHNICAL MATERIEL CORPORATION claims proprietary right in the material disclosed hereon. This drawing is issued in confidence for engineering information only and may not be reproduced or used to manufacture anything shown hereon without permission from THE TECHNICAL MATERIEL CORPORATION to the user. This drawing is loaned for mutual assistance and is subject to recall at any time.

Property of:
THE TECHNICAL MATERIEL CORPORATION
MAMARONECK, NEW YORK



STAGE-4 ~ A-2439-4 ~ FINAL ASS'Y.

- CR3404
- CR3405
- CR3406
- CR3407

- R3415
- R3417
- R3416

NOTES ~ • SOLDER ALL CONNECTIONS.
SLEEVING TO BE 1/2 SHORTER THAN BUSS WIRE.

REQ.	ITEM	PART NO.	DESCRIPTION	SYMBOL
X	15	MWC 22(7) U0	WIRE, ELECTRICAL	BLACK
I	14	CM112F622K35	Capacitor, Fixed, Mica. 6200muf	C3417
X	13	BS-100	Solder, Soft	
4	12	1N100	DIODE	
2	11	RC20GF470K	Resistor, Fixed, Composition	R3433 R3434
1	10	RC20GF332K	" " "	R3430
1	9	RC20GF223K	Resistor, Fixed, Composition	R3427
L	8	CC-100-24	Capacitor, Fixed, Ceramic	C3415
X	7	MWC 22(7) U8	Wire, Electrical	GRAY
X	6	U6		BLUE
X	5	U3		ORANGE
X	4	MWC 22(7) U2	Wire, Electrical	RED
2	3	TE-116-3	Solder Lug	
2	2	TE-108-3	Standoff, Rivet Type	
24	1	TE-168-4-C	Terminal, Miniature	

SYM	ZONE	DESCRIPTION	DATE	CH. NO.	DRAFTS	CHECKER	ENG. APP.
E		CHG. IT 14 P/N, WAS CM112E622K35	8/24/72	20197	GE		
D	C2	IT.12 WAS IN-100	2.4.65	13416	MB		
C	C2	IT.12 WAS IN-100	10.6.64	12532	MB		
B	C2	ITEM (14) WAS CM112E822K35, 8200muf	10/24/62	7532	MB		
A	C2, C6	ITEM (15) ADDED, STAGE (4) WIRING CLARIFIED	9-27-62	7255	MB		

UNLESS OTHERWISE SPECIFIED:
DIMENSIONS ARE IN INCHES
TOLERANCES ON FRACTIONS ± 1/64 DECIMALS ± .005 ANGLES ± 1/2°
SCALE DO NOT SCALE
MAXIMUM ALLOWABLE TOLERANCES HAVE BEEN DETERMINED AND ANY DEVIATIONS WILL BE CAUSE FOR REJECTION. REMOVE ALL BURRS & SHARP EDGES

REQ. PER UNIT	MODEL	SECTION	ASS'Y. NO.	DATE
1	HFS-1	3400		8-15-62

REQ.	ITEM	PART NO.	DESCRIPTION	SYMBOL
STRUMMER				
THE TECHNICAL MATERIEL CORP. MAMARONECK, NEW YORK				
TERMINAL BOARD & COMPONENT ASS'Y. AMPLIFIER 3400 DECK				
DRAWN		CHECKED		FINAL APPROVAL
TYPE & TEMPER		HEAT TREAT. SPEC.		
FINISH & SPEC. NO.		ELEC. DES. APP.		MECH. DES. APP.
		SHEET		OF
		A-2439		E