

REVISIONS							NEG	POS.
BYM	DESCRIPTION	DATE	E.M.N. NO.	DRAFT	CHKD	APPD		
A	SEE SHEET 2 OF 2 REVISION "A"	1-15-63	8025					
B	SEE SHEET 2 OF 2 REVISION "B"	11-26-63	10463					
C	SEE SHEET 2 OF 2 REVISION "C"	3-24-64	11050	NTB				
D	SEE SHEET 2 OF 2 REV. "D" (2" HOLES RELOC.)	1-5-65	13217	92			PURCH	QA
E	SEE SHEET 2 OF 2	11-15-65	15159					
F	LETTERING "A2446-" ENLARGED TO 1/2"	6-27-66	CC	WHB				
G	ON MTG NOTES, NOTE 4 DELETED, NOTE 7 CLARIFIED. SEE SHEET 2 OF 2	10-11-66	17020	C.D.L.				
H	STAGE 2 TRANSFERRED FROM SHEET 2	1-4-68	18698	4X				OP

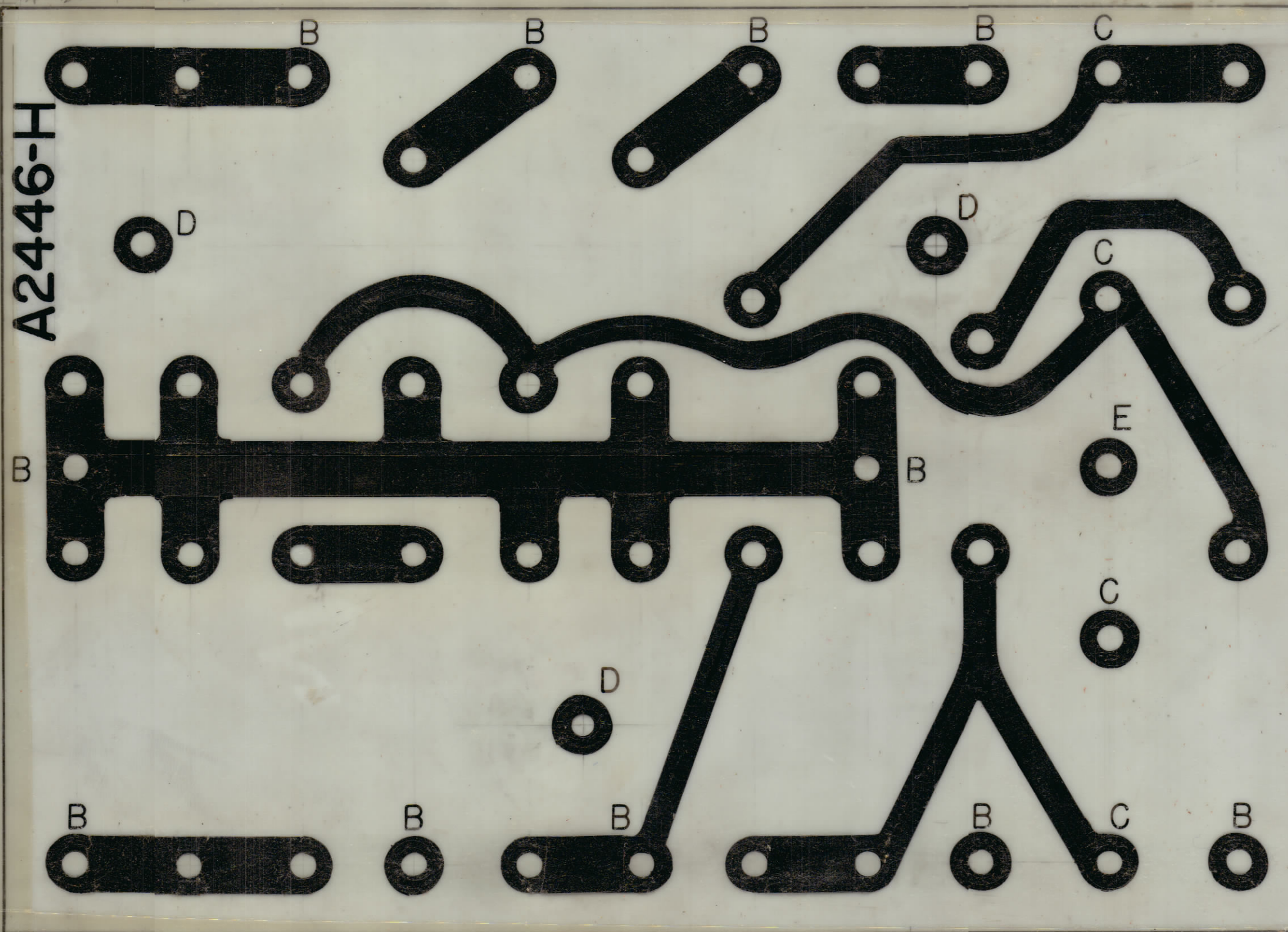
A-ALL HOLES WITHOUT LETTER DESIGNATION TO BE .052 DIA. 31 REQ.  
 B-.078 DIA. 11 REQ.  
 C-.073 DIA. 4 REQ.  
 D-.189 DIA. 3 REQ.  
 E-.312 DIA. 1 REQ.

NOTICE TO PERSONS RECEIVING DRAWING

THE TECHNICAL MATERIEL CORPORATION claims proprietary right in the material disclosed hereon. This drawing is issued in confidence for engineering information only and may not be reproduced or used to manufacture anything shown hereon without permission from THE TECHNICAL MATERIEL CORPORATION to the user. This drawing is loaned for mutual assistance and is subject to recall at any time.

Property of:  
 THE TECHNICAL MATERIEL CORPORATION  
 MAMARONECK, NEW YORK

REDUCE AS SHOWN



REDUCE TO ~ 2 1/16 - 1/32

REDUCE TO ~ 2 7/8 +0 -1/2

STAGE 1  
 SCALE 4:1

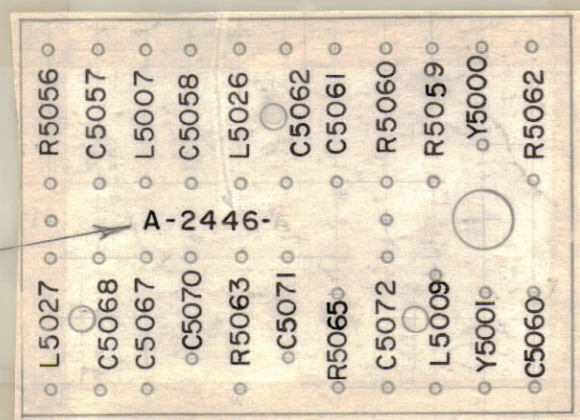
MFG. NOTES (IMPORTANT)

- DO NOT PRINT LETTER DESIGNATIONS AS SHOWN ON CIRCUIT (DENOTES HOLE SIZES)
- COPPER FOIL: TWO OUNCES, ONE SIDE AS SHOWN
- PLATING (MINIMUM THICKNESS) .0005 TIN LEAD ON CONDUCTORS
- MOUNT ITEM 2 (SEE SHEET 2) IN ALL "D" HOLES AS SHOWN IN STAGE 3
- MOUNT ITEM 1 (SEE SHEET 2) IN ALL "B" HOLES AS SHOWN IN STAGE 3
- SOLDER ITEM 1 TO RESPECTIVE PADS.

A2446 - -  
 VENDOR TO LEAVE BLANK      VENDOR TO INSERT REVISION LETTER

NOTE:  
 ALL LETTERING TO BE 3/32 HIGH  
 CENTERED ON COMPONENT MOUNTING HOLE CENTER LINES WHERE POSSIBLE

STAMP TMC PART NO. AS SHOWN ABOVE W/LATEST REV. LETTER.



STAGE 2

REQ	ITEM	PART NO.	WESCHLER DESCRIPTION	SYMBOL
		062	THE TECHNICAL MATERIEL CORP. MAMARONECK NEW YORK	
		EPOXY	PRINTED, ELECTRICAL CIRCUIT (AFC-3)	
	G-10		RUIZZO	
	TYPE & TEMPER		DRAWN	FINAL APPROVAL
				A-2446 H
	FINISH		ELEC. DES. APP.	MECH. DES. APP.
			SHEET 1 OF 2	