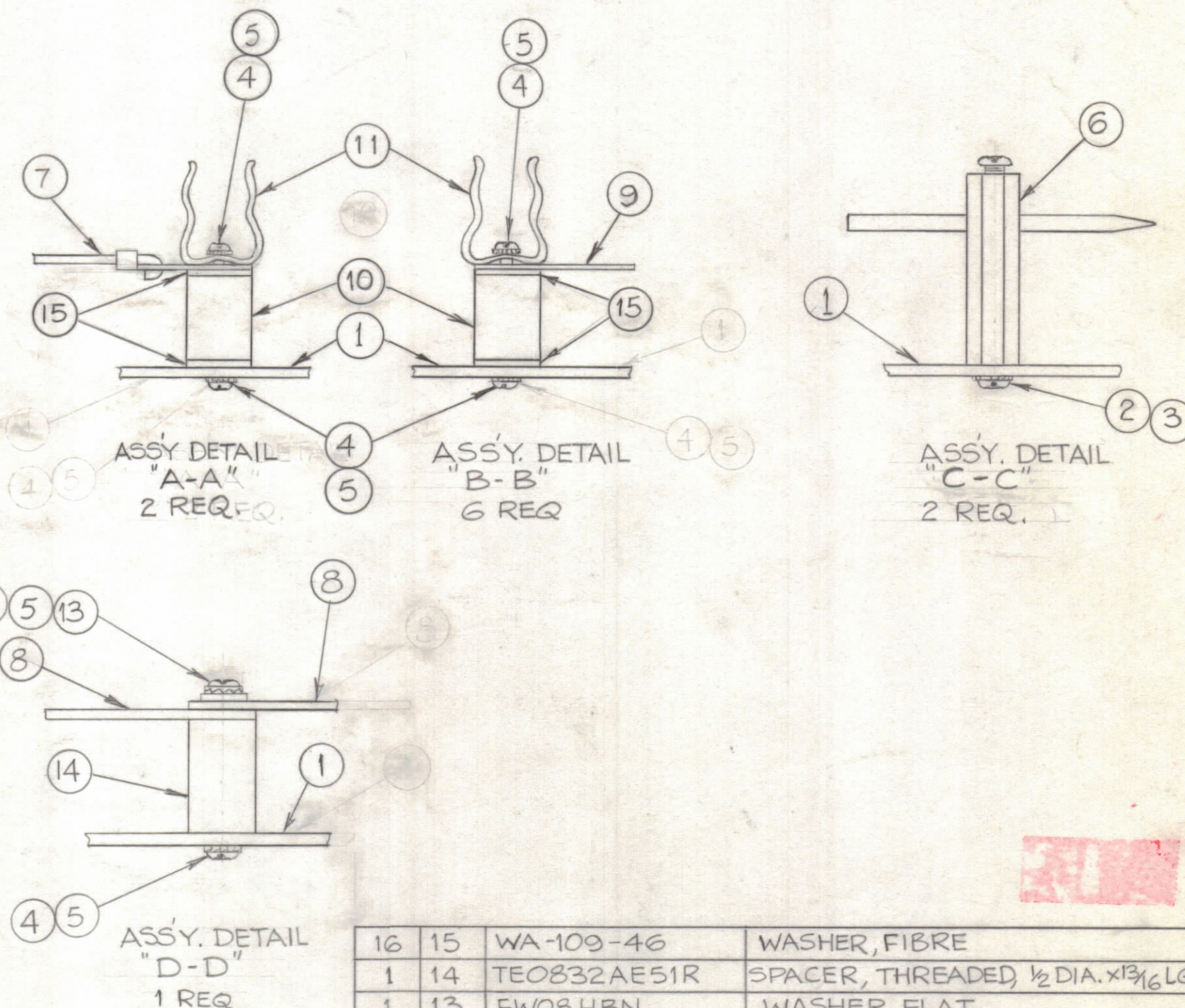
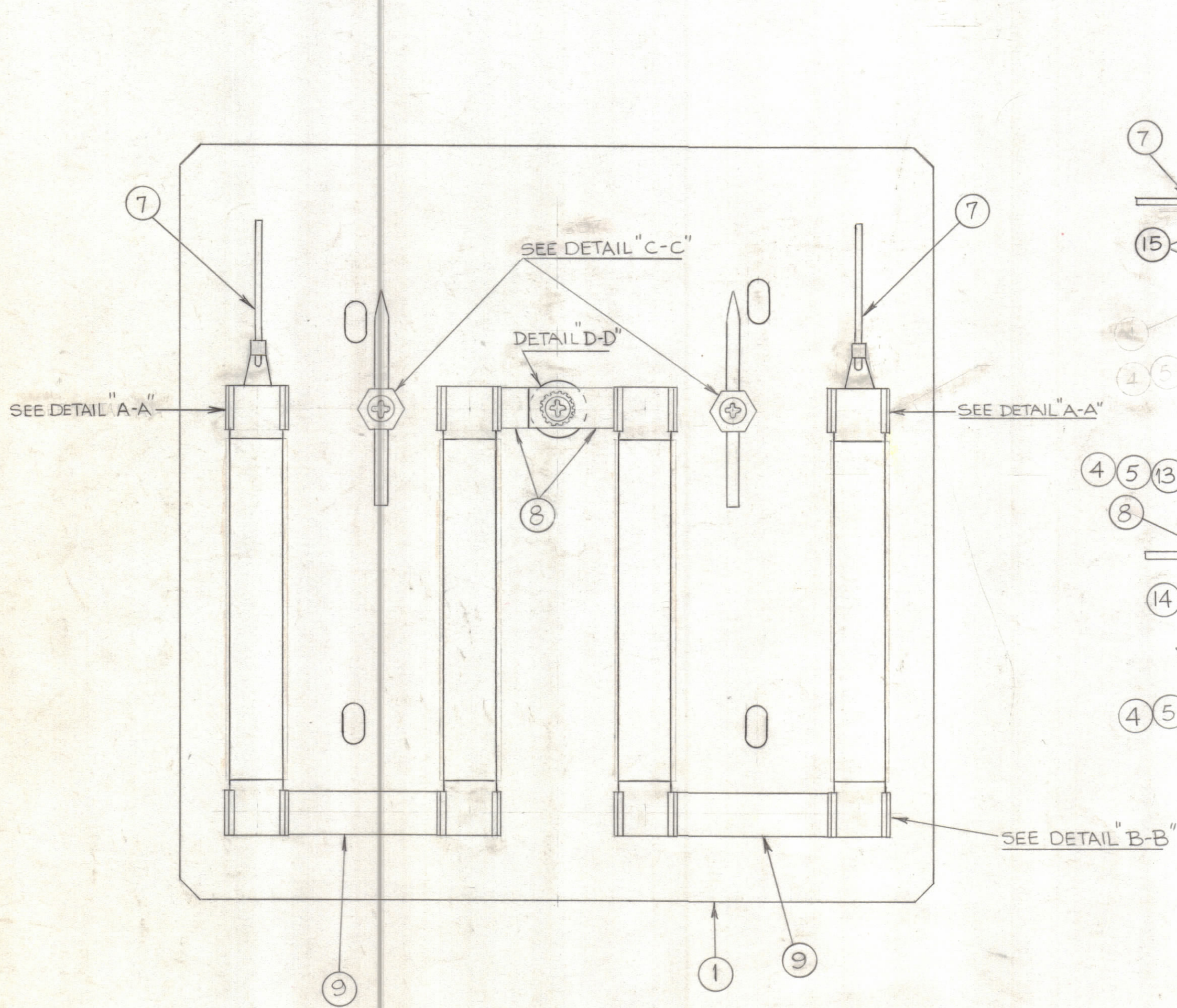


NOTICE TO PERSONS RECEIVING THIS DRAWING

THE TECHNICAL MATERIEL CORPORATION claims proprietary right in the material disclosed hereon. This drawing is issued in confidence for engineering information only and may not be reproduced or used to manufacture anything shown hereon without permission from THE TECHNICAL MATERIEL CORPORATION to the user. This drawing is loaned for mutual assistance and is subject to recall at any time.

Property of:
THE TECHNICAL MATERIEL CORPORATION
MAMARONECK, NEW YORK

REVISIONS						
ZONE	SYM	DESCRIPTION	DATE	E.M.N. NO.	DRAFT	CHKD
A-4	A	RTB-13 WAS RTB-10	8-20-62	7096	SC	
C-2	B	ITEMS (10) WAS NS-103 (12) WAS RR-115-100, PICTORIAL CLARIFIED	3-22-63	8604	RC	
	C	ON 8/M: IT.12 WAS RR-133-1.	12-1-64	13040	RY	



REQ'D.	ITEM	PART NUMBER	DESCRIPTION	SYMBOL
16	15	WA-109-46	WASHER, FIBRE	
1	14	TE0832AE51R	SPACER, THREADED, 1/2 DIA. x 1 3/16 LG.	
1	13	FW08HBN	WASHER, FLAT	
4	12	RR-115-100	RESISTOR ASSY.	
8	11	FC-101	CLIP, FUSE	
8	10	NS3W0206	INSULATOR, STANDOFF	
2	9	MS-144-5	LINK	
2	8	MS-144-4	LINK	
2	7	A-1563-3	LEAD, ASSY.	
2	6	A-170	LIGHTNING ARRESTOR ASSY.	
18	5	SCBP0832BNG	SCREW, MACHINE	
18	4	LWE08MRN	WASHER, LOCK, EXTERNAL	
2	3	LWE06MRN	WASHER, LOCK, EXTERNAL	
2	2	SCBP0632BNG	SCREW, MACHINE	
1	1	MS-3006 (LD-1139)	PLATE, MOUNTING	

I. JOHNSON LIST OF MATERIAL

MATERIAL		THE TECHNICAL MATERIEL CORP. MAMARONECK, NEW YORK	
FINISH		TITLE RESISTOR & MOUNTING PLATE SUB-ASSY	
DRAWN V.R.R.	DATE 7-27-62	FINAL APPROVAL	DATE
CHECKED	DATE 7/31/62		
ELECT. DES.	DATE 7-31-62	A-2514	C
MECH. DES.	DATE 7-31-62	SHEET	REV. LTR.

1	RTB-13	
QTY./UNIT	MODEL USED ON	ASSY. NO.
SCALE	CODE	

THE CONTENTS OF THIS DRAWING ARE THE EXCLUSIVE PROPERTY OF THE TECHNICAL MATERIEL CORP. ITS UNAUTHORIZED USE OR REPRODUCTION IN WHOLE OR IN PART IS STRICTLY FORBIDDEN.

NOTES

A-2514