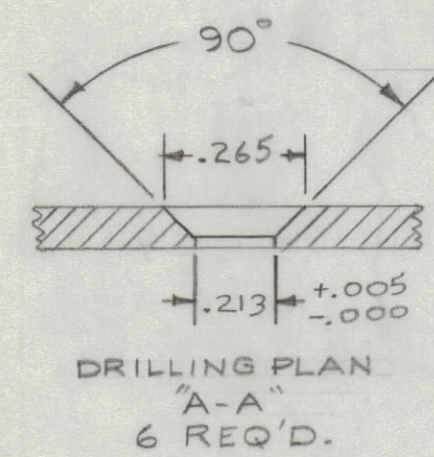
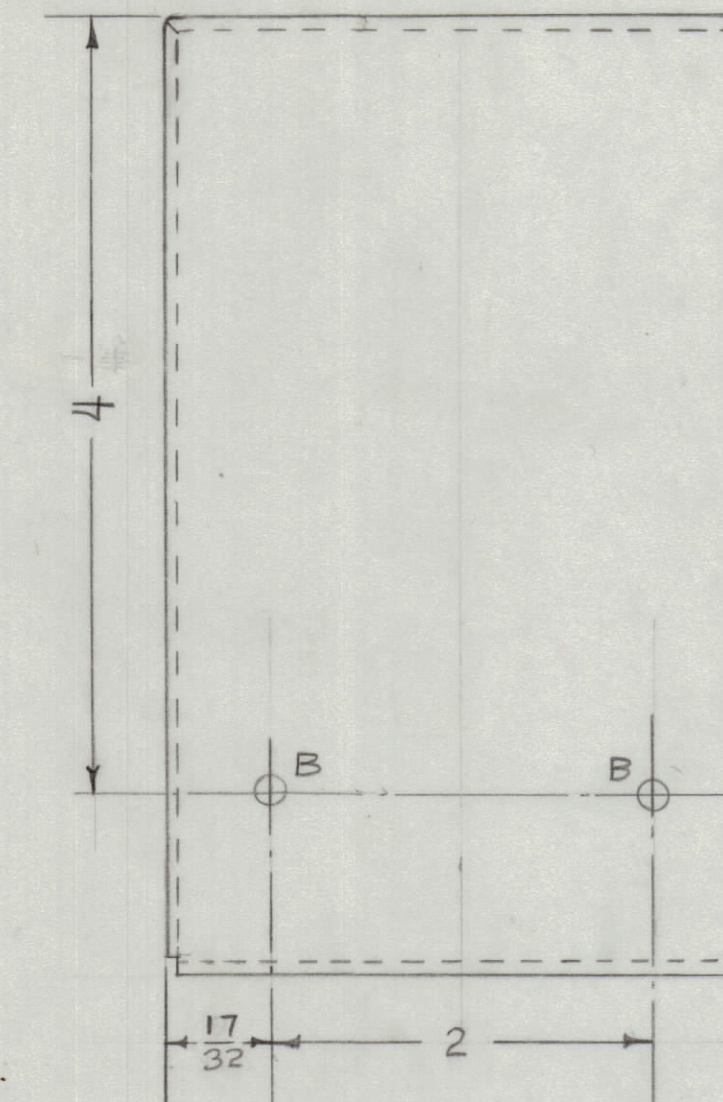
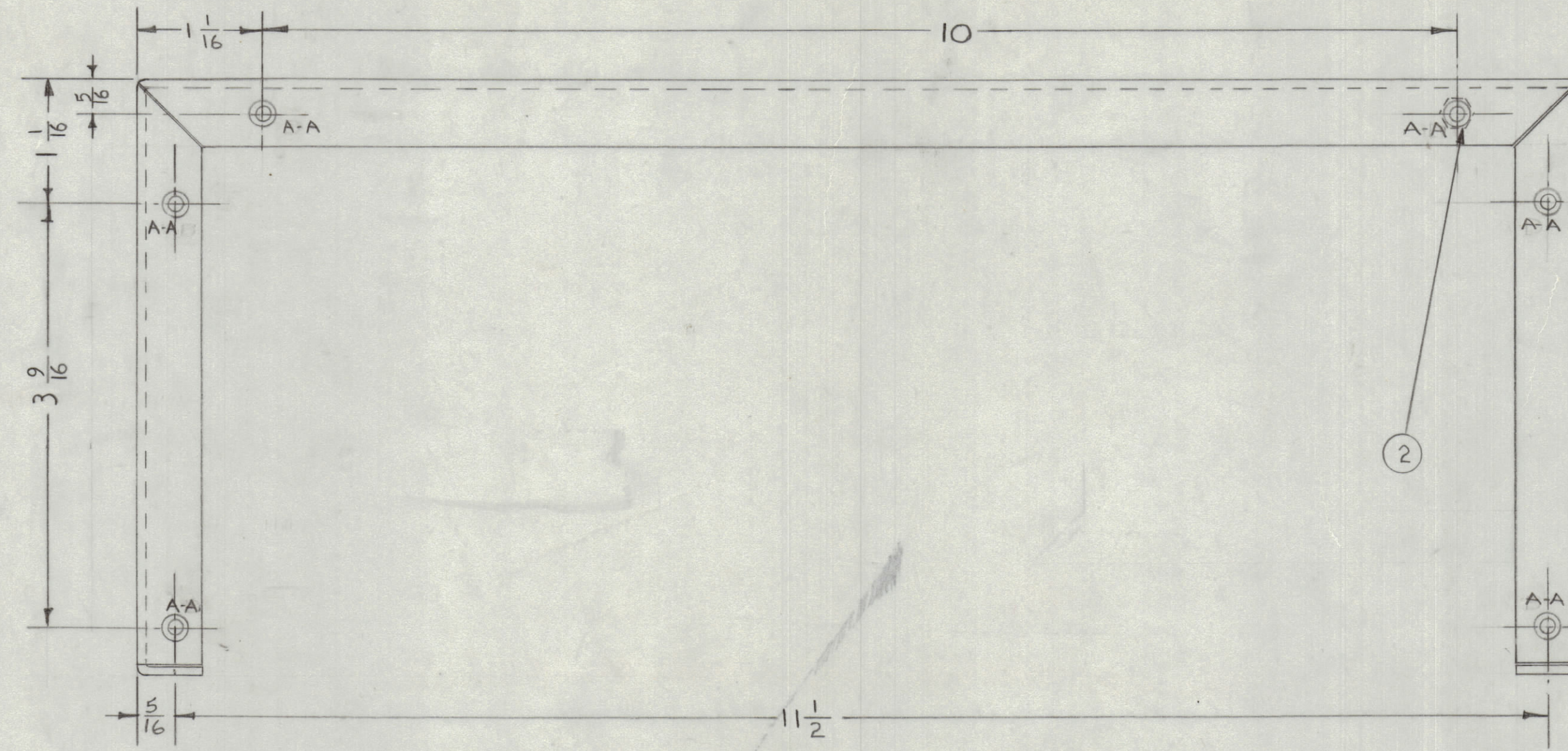
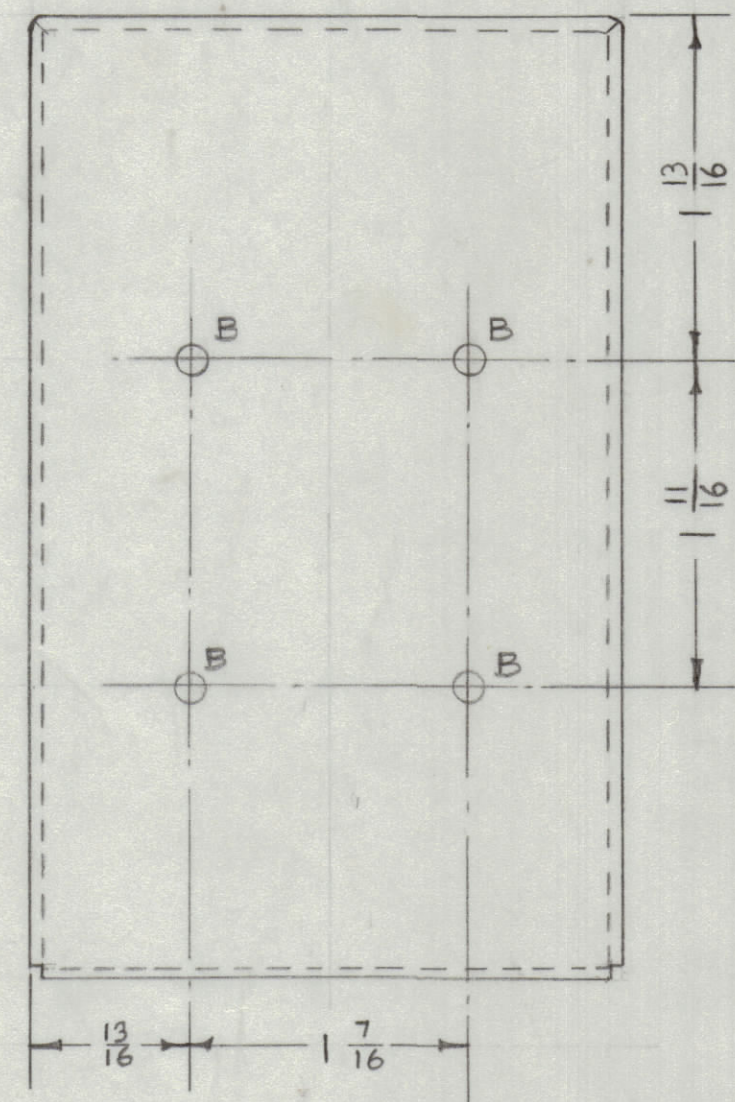
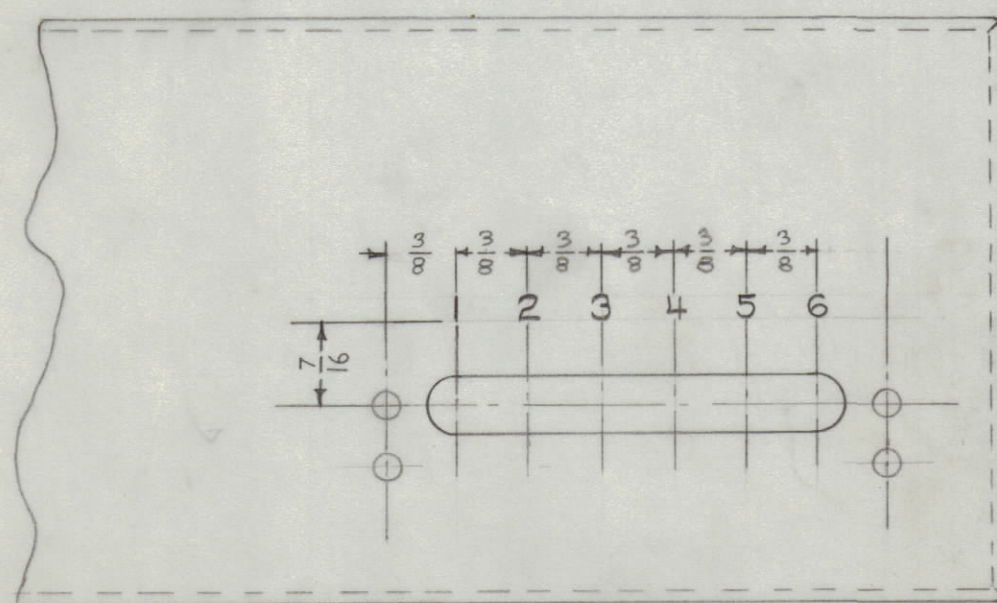
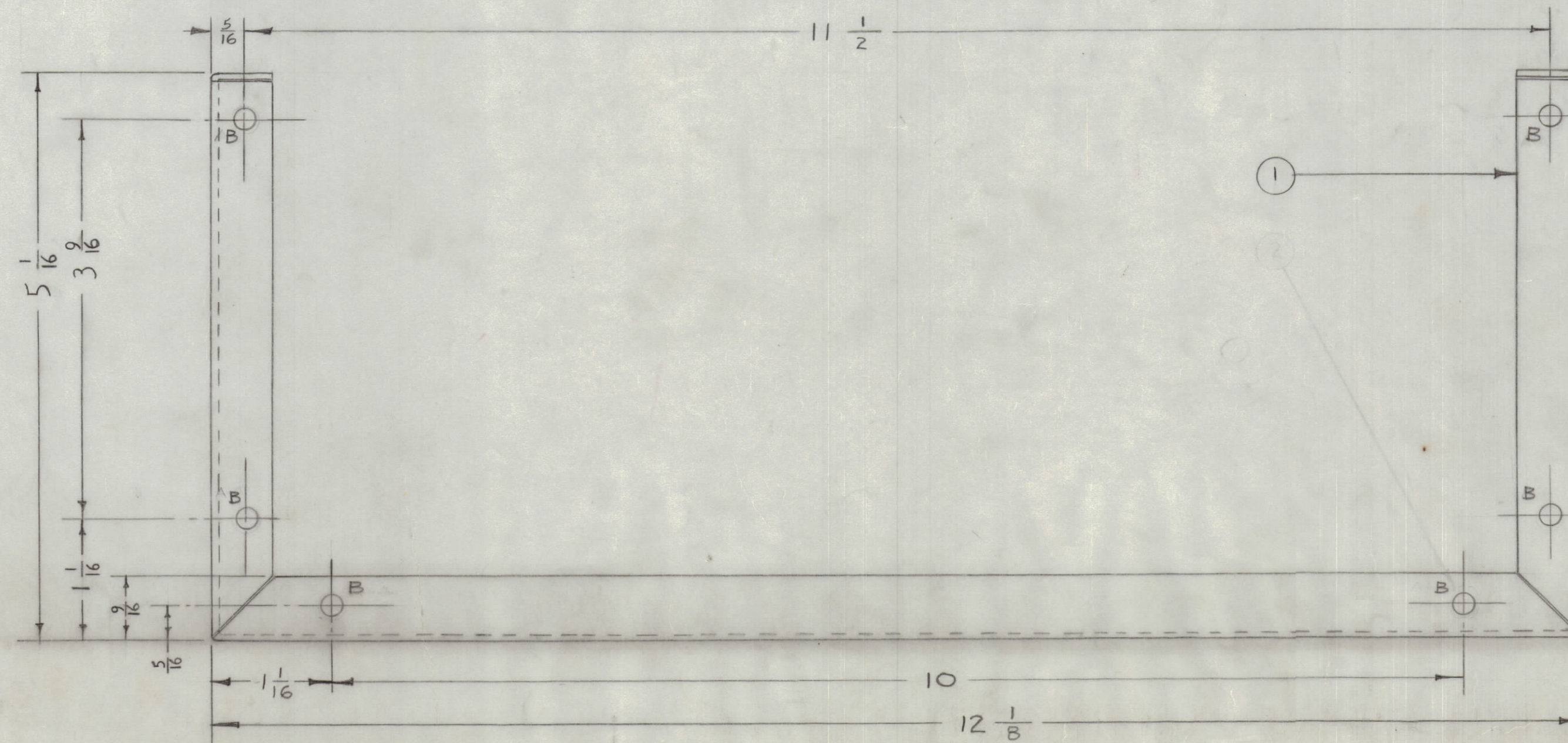
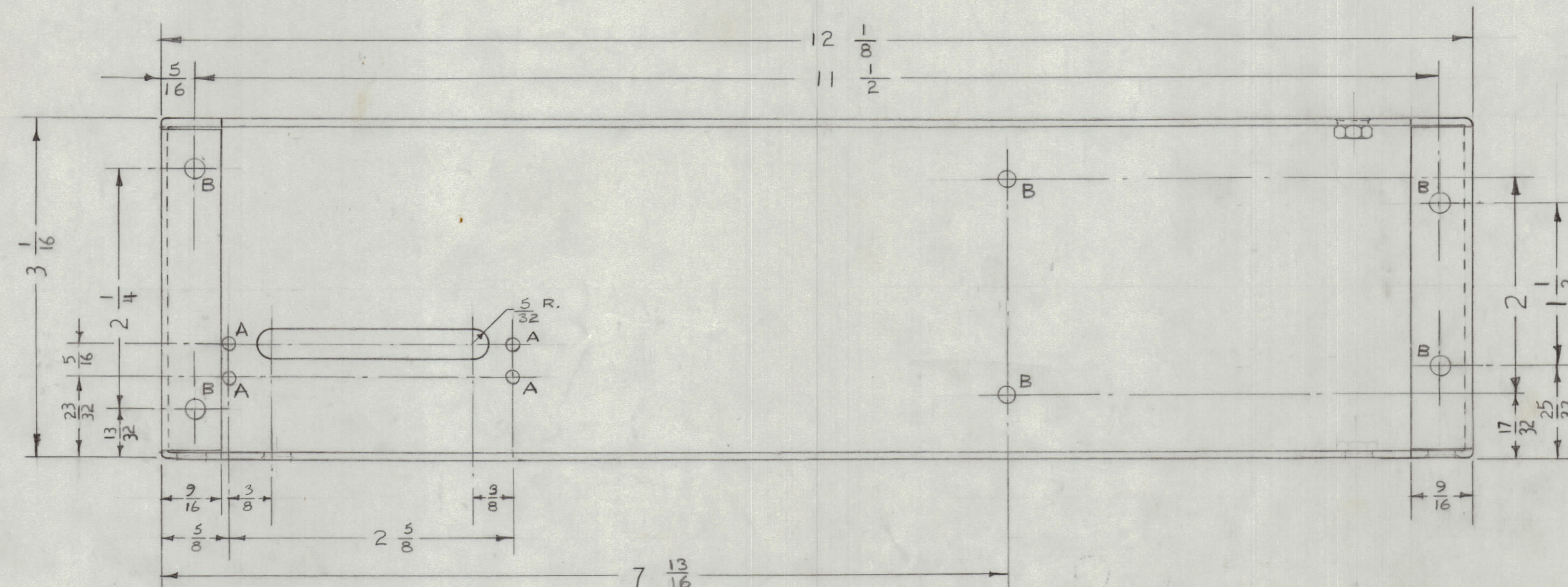


IF IT IS FOUND DESIRABLE TO CHANGE ANY TOLERANCE OR OTHER DETAIL SPECIFIED ON THIS DRAWING NOTIFY THE PURCHASER PROMPTLY.
 MAXIMUM ALLOWABLE TOLERANCES HAVE BEEN DETERMINED AND DEVIATIONS WILL BE CAUSE FOR REJECTION. REMOVE ALL BURRS AND SHARP EDGES



LEGEND
 A = 3/16 D. (.140) 4 REQ'D.
 B = 3/16 D. (.187) 18 REQ'D.



LETTERING DETAIL
 1/8 HIGH, BLACK

NOTICE TO PERSONS RECEIVING THIS DRAWING

THE TECHNICAL MATERIEL CORPORATION claims proprietary right in the material disclosed hereon. This drawing is issued in confidence for engineering information only and may not be reproduced or used to manufacture anything shown hereon without permission from THE TECHNICAL MATERIEL CORPORATION to the user. This drawing is loaned for mutual assistance and is subject to recall at any time.

Property of:
 THE TECHNICAL MATERIEL CORPORATION
 MAMARONECK, NEW YORK

6	2	SM-107-22	INSERT, HEX.	
1	1	MS-180	XFD CHASSIS (NO DRAWING)	
REQ. ITEM	PART NO.	DESCRIPTION		SYMBOL
	.051 THK.	THE TECHNICAL MATERIEL CORP. MAMARONECK, NEW YORK		
	STOCK SIZE	CHASSIS ASS'Y.		
MATERIAL	WEIGHT PER PC.	X.F.D.		
525 - H32.		16 12-8-52		
TYPE & TEMPER	DRAWN	ELEC. DES. APP.	MECH. DES. APP.	
	c.d.d.			
HEAT TREAT. SPEC.	CHECKED	FINAL APPROVAL		
5-404 IRIDITE		SUPERCEDES		
FINISH & SPEC. NO.	BMS037	A-321	A	

XFD-1	160	A-322	12-8-52
MODEL	PROJECT NO.	ASS'Y. NO.	DATE
USED ON			

A	5-404 IRIDITE WAS 5-181 CAUSTIC DIP	12/1/52	1001	A.B.	EMW		
ISSUE	ITEM	CHANGED FROM	DATE	CN. NO.	DRAFTS	CHECKER	ENG. APP.
TOLERANCES							
ALL OTHERS	DEC. DIM. ± 1/64	DRILL PUNCH, COMMERCIAL STOCK SIZES AND MANUFACTURERS TOLERANCES ARE NOT INCLUDED.					
	FRAC. DIM. ± 1/64						
	ANGULAR DIM. ± 1/2						

A-321
 A