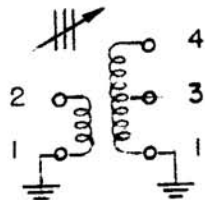
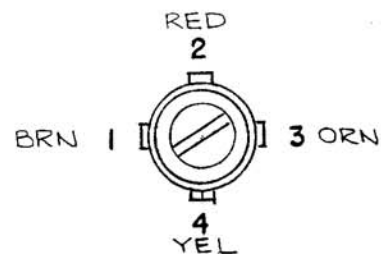
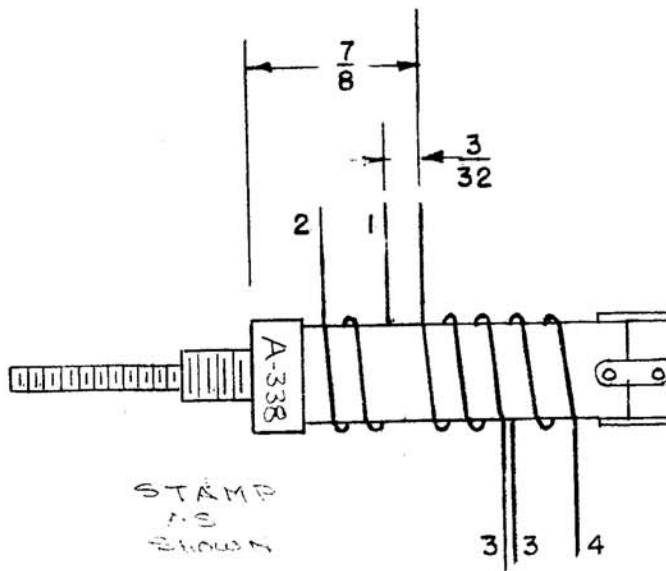


A-338-C



WINDING 1-3, 19 TURNS OF # 30 DSC }
 WINDING 3-4, 11 TURNS OF # 30 DSC } WI107-11
 WINDING 1-2, 7 TURNS OF # 30 DSC }

NOTES:

1. ALL WINDINGS ARE SINGLE LAYER TIGHT WOUND SOLENOIDS.
2. USE SPOTTING CEMENT WHERE NECESSARY.
3. BAKE COIL OUT FOR 30 MINUTES AT 100° C.
4. PAINT COIL WITH INSULX-U-85 AND BAKE 1 HOUR AT 100° C.

Test Data - Q Meter

Winding	Freq. Mc	Slug Pos.	Ind. micro Henrie ±10%	cap mmf	Q min.
1-4	7.9	Min L	9.5	43	120
1-3	7.9	Min L	5	82	90
1-4	2.5	Max L	16.5	246	90
1-2	7.9	Min L	1.2	336	65

Coil Form CTC-LS4. Form With #20063K (Med. freq.) Slug. TMC PART OF-106-1

USED ON A-684 Page 3

* Min L is when slug is as close to the mounting base as possible.

SUPERCEDES AEM 007

REV-C WI107-11 ADDED 10/19/66 whw
 REV-B DWG UPDATED - 11/14/68 -10421 KID
 REV-A NOTE 5 ADDED - 10/14/63 -10176 - 90

DATE	6-15-51	T-1	THE TECHNICAL MATERIEL CORPORATION MAMARONECK, NEW YORK		
DRN.	JAD				
CHKD.	69				
APPD.	69				
MODEL		XFK	SHEET	OF	NO. A-338