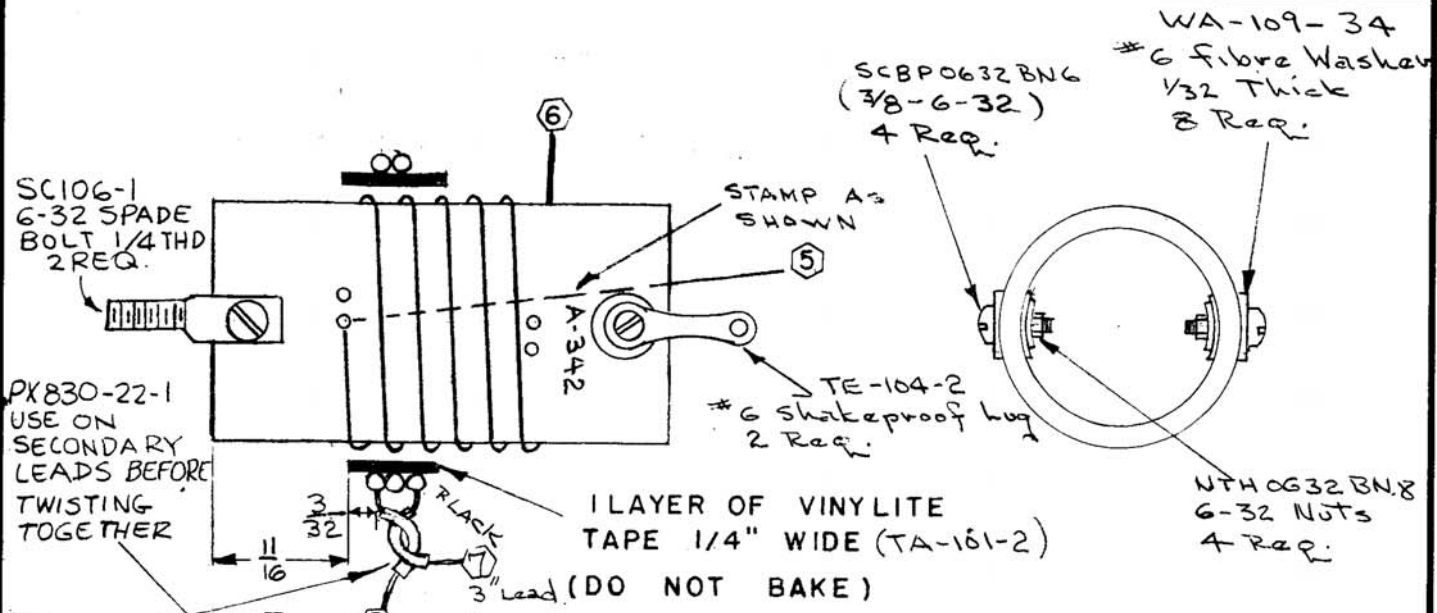


A-342-J



WINDING 5-6, 15 1/2 TURNS OF 20 DSC (WI-107-1)
 WINDING 7-8, 2 TURNS OF 20 DSC WOUND IN SAME DIRECTION AS WINDING 5-6

NOTE: COLOR CODE LEAD #7 AS SHOWN (BLACK)

1. ALL WINDINGS ARE SINGLE LAYER TIGHT WOUND SOLENOIDS
2. WIND 5-6 FIRST, THEN FOLLOW NOTES 3,4,5
3. USE SPOTTING CEMENT WHERE NECESSARY.
4. BAKE COIL OUT FOR 30 MINUTES AT 100 C
5. PAINT COIL WITH INSULX-U-85 AND BAKE 1 HOUR AT 100 C
6. APPLY TAPE, WIND 7-8. THEN COAT WITH MAAS & WALDSTEIN 45 INSULATING LACQUER AND AIR DRY.

Coil form - National XR-16 (TMC PART CF-108)
 1/4 OD x 2 3/8 Long.

NOTE: USED ON ASSY-A-752

Sym	Description	Date	App
J	PX830-22-1 ADDED	8-20-67	H.G.
H	SC & NTP. N°S REVISED	10.18.66	WWS
G	ON TEST DATA CHART ADDED ± 10%	12-17-64	H.A.
F	WI-107-1 WAS WI-107-7	11/14/63	
E	#7 LEAD COLOR CODED BLACK	4/28/58	A.P.T.
D	HARDWARE CLARIFIED	10/17/56	
C	STAMPING ADDED	6-3-54	
B	Test Data Added	6-12-52	
A	Winding 5-6 Was 17 1/2 Turns	1/24/52	

Test Data Q-Meter

Wind	Freq MC	slug Pos.	±10% Ind. Micro Henrie	Cap mmf	Q
5-6	7.9	Air	9.2	45	160
7-8	25	Air	.75	40	25

SUPERCEDES AEM 011-B

Sym	Description	Date	App
A	IND. WAS 1.02	3-25-53	

DATE	6-18-51	MAIN SECTION OF T5	MODEL XFK	THE TECHNICAL MATERIEL CORPORATION		
DRN.	AAWe			MAMARONECK, NEW YORK		
CHKD.				SHEET	OF	NO. A-342 J
APPD.						