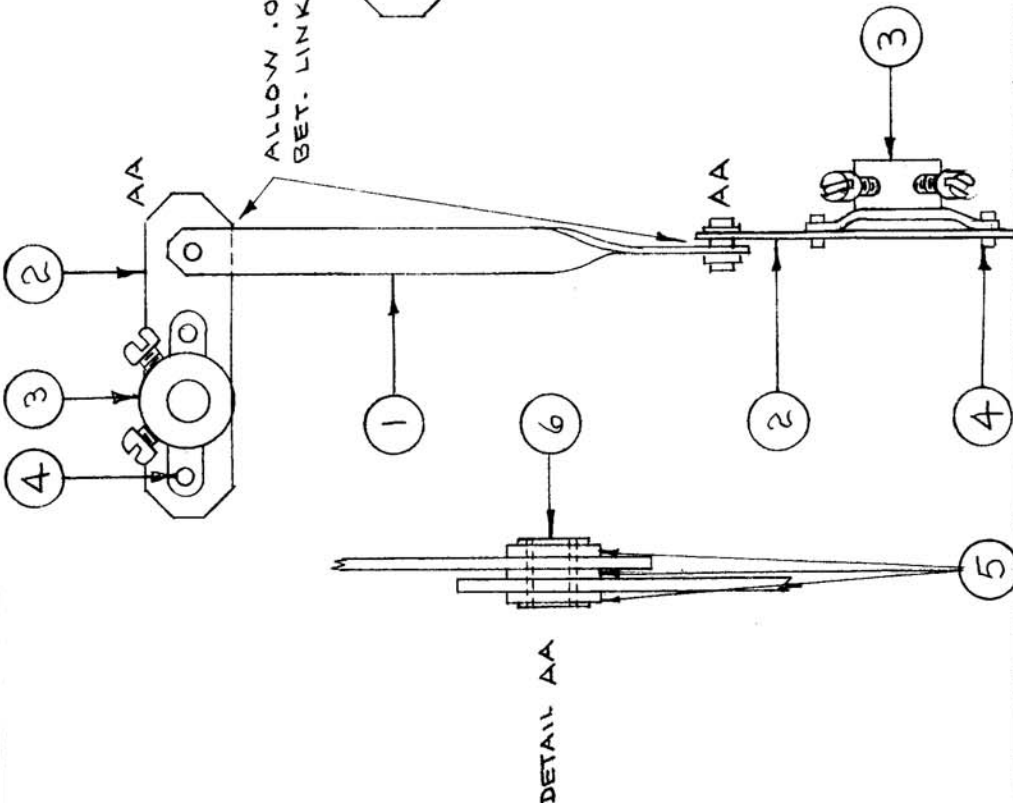
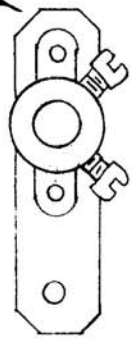


IF IT IS FOUND DESIRABLE TO CHANGE ANY TOLERANCE OR OTHER DETAIL SPECIFIED ON THIS DRAWING NOTIFY THE PURCHASER PROMPTLY.

MAXIMUM ALLOWABLE TOLERANCES HAVE BEEN DETERMINED AND DEVIATIONS WILL BE CAUSE FOR REJECTION. REMOVE ALL BURRS AND SHARP EDGES



NOTE POSITION OF ITEM 3 ON ITEM 2



A-355		D	
USED ON			
AMT PER UNIT	MODEL	PROJECT NO.	DATE
1	XFK	A-683	2-5-53

REQ. ITEM	PART NO.	DESCRIPTION	SYMBOL
2	EY 100-2	EYELET, FLAT FLANGE	
6	FW04HBN	WASHER, FLAT	
4	EY 100-1	EYELET, FLAT FLANGE	
2	MC 105-2	COUPLING	
2	MS 229	LINK	
1	FP 115	LINK, LONG SHAFT	

THE TECHNICAL MATERIEL CORP. MAMARONECK, NEW YORK	
LINKAGE ASSEMBLY	
STOCK SIZE	#
MATERIAL	WEIGHT PER PC.
TYPE & TEMPER	#
HEAT TREAT. SPEC.	#
FINISH & SPEC. NO.	#

ISSUE ITEM	CHANGED FROM	DATE	CN. NO.	DRAFTS CHECKER	ENG. APP.
D	IT. 5 WAS FW04MBC	10/25/46	17100	W40	[Signature]
C	CHANGED ITEM'S WAS MC-105	6-14-47	5068	DF 20	[Signature]
B	DETAIL CLARIFIED	4-30	2	RB	[Signature]
A	LINK & MC-105 REVERSED	12-14-50	1	RB	[Signature]

TOLERANCES	
DEC. DIM. ±	DRILL, PUNCH, COMMERCIAL STOCK
ALL OTHERS	SIZES AND MANUFACTURERS
	TOLERANCES ARE NOT INCLUDED.

C.O.D. 2-5-53	A. J. J.	MECH. DES. APP.
[Signature]	[Signature]	FINAL APPROVAL
SUPERCEDES		A-355
AMS 167 A		D