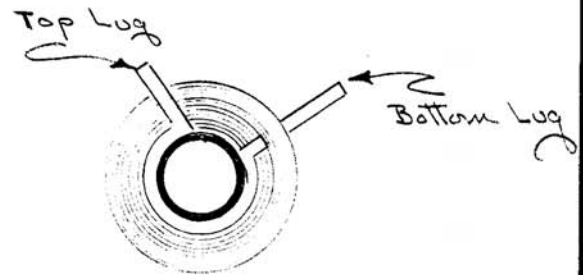
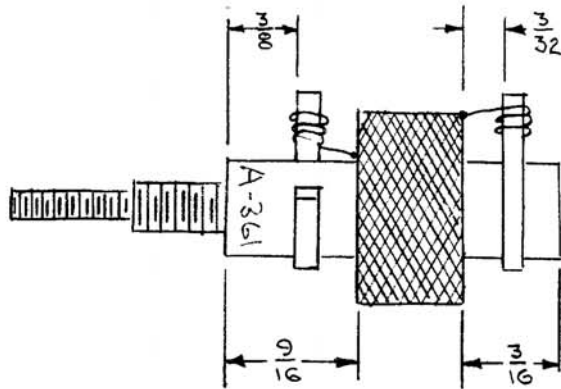


A-361



Coil form CTC Type LS3L (TMC PART NO. CF-107-2N)  
Coil - L2 (RED SLUG)

Winding Data

Cam Width .375  
Wire 5/41 Litz, WI-104-3  
Winding - 305 turns

L Min. = 1.05 in.  
Q = 45  
F = 790 KC

Gears { Driver - 43  
Cam - 88

Notes:

1. Top Turn (305<sup>th</sup>) Held in place By A spot of Dupont Cement.
2. Solder Ends of Leads To Coil Logs As Shown.
3. Paint coil With Insuix-U-85 & Bake 1 Hour at 100°.

Required: 1 Per Unit

B	1	CF-107-2N WAS CF-107-2 (RED SLUG) ADDED	12/17/53	2	16	JAD	G.T.O.
A	1	L MIN. Q & F ADDED	9/30/50	1	16	JAD	P.Z.K.
ISSUE	ITEM	CHANGED FROM	DATE	C.N. NO.	DRAFTS.	CHECKER	ENG. APP.

DATE	7-9-51	100 KC TRANSFORMER  COIL  Model DVM	<b>THE TECHNICAL MATERIEL CORPORATION</b> MAMARONECK, NEW YORK
DRN.	JAD		
CHKD.	G.T.O.		
APPD.	P.M.		
SHEET	OF	NO.	A-361 B