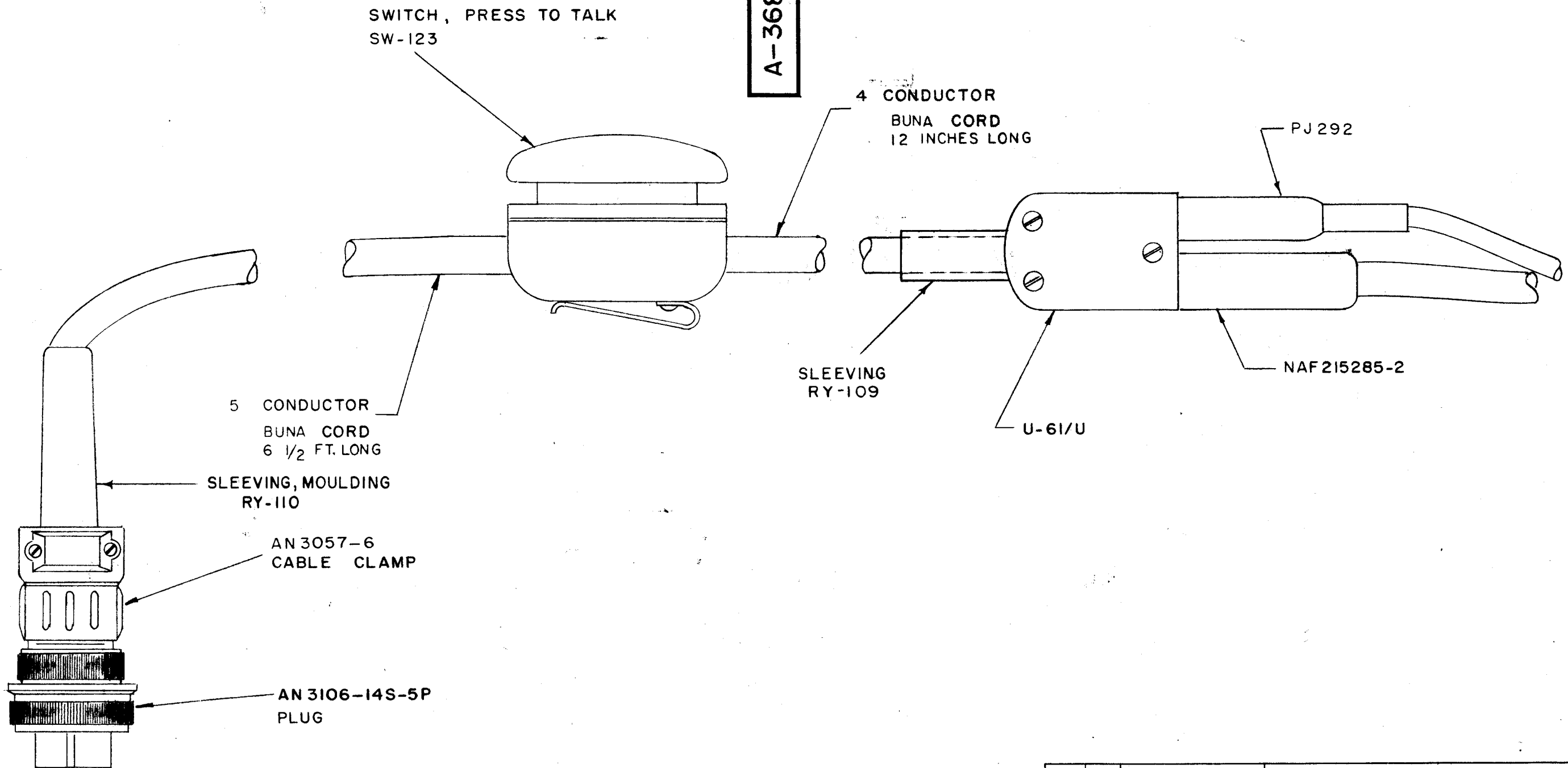


IF IT IS FOUND DESIRABLE TO CHANGE ANY TOLERANCE OR OTHER DETAIL SPECIFIED ON THIS DRAWING NOTIFY THE PURCHASER PROMPTLY.

MAXIMUM ALLOWABLE TOLERANCES HAVE BEEN DETERMINED AND DEVIATIONS WILL BE CAUSE FOR REJECTION. REMOVE ALL BURRS AND SHARP EDGES

A-368 B



B	2	4 CONDUCTOR WAS 3 ON 4 5 CONDUCTOR BUNA CORD WAS RUBBER	6/25/64	11566	A.M.	<i>[Signature]</i>	jc
A	1	SLEEVEING INFO. ADDED	8/6/55	1	FA	<i>[Signature]</i>	WJ
ISSUE	ITEM	CHANGED FROM	DATE	CN. NO.	DRAFTS	CHECKER	ENG. APP.

TOLERANCES		SCALE:
ALL OTHERS	DEC. DIM. ± FRAC. DIM. ± ANGULAR DIM. ±	DRILL, PUNCH, COMMERCIAL STOCK SIZES AND MANUFACTURERS TOLERANCES ARE NOT INCLUDED.

MODEL	PROJECT NO.	ASS'Y. NO.	DATE
USED ON			

REQ.	ITEM	PART NO.	DESCRIPTION	SYMBOL
			THE TECHNICAL MATERIEL CORP. MAMARONECK, NEW YORK	
STOCK SIZE			HEADSET	
MATERIAL			MIC. EXT CORD	
WEIGHT PER PC.				
TYPE & TEMPER			FA 2-10-53	
HEAT TREAT. SPEC.			C.D.D. 2-13-53	
FINISH & SPEC. NO.			checked	
			FINAL APPROVAL	
			A-368	B