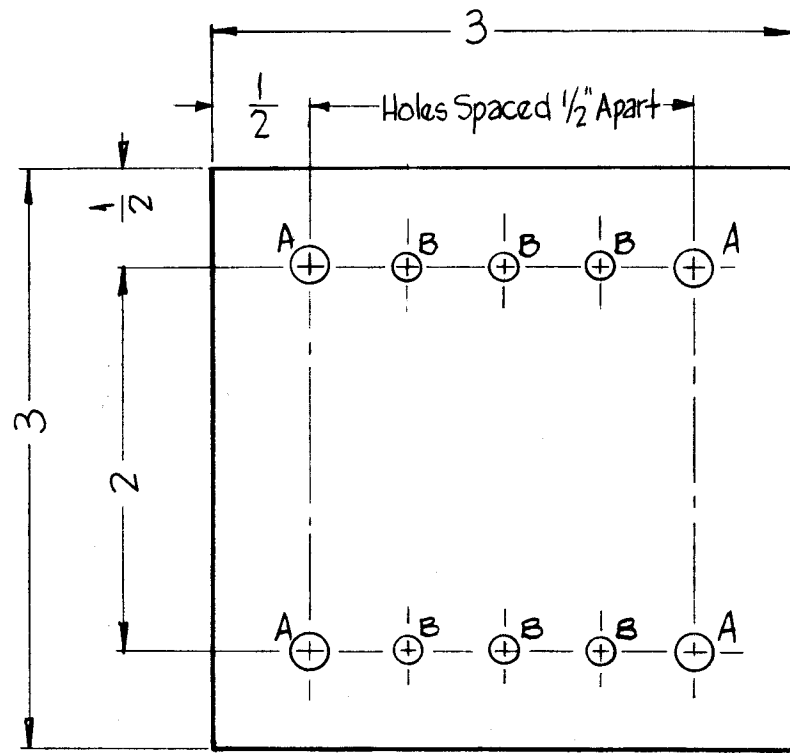
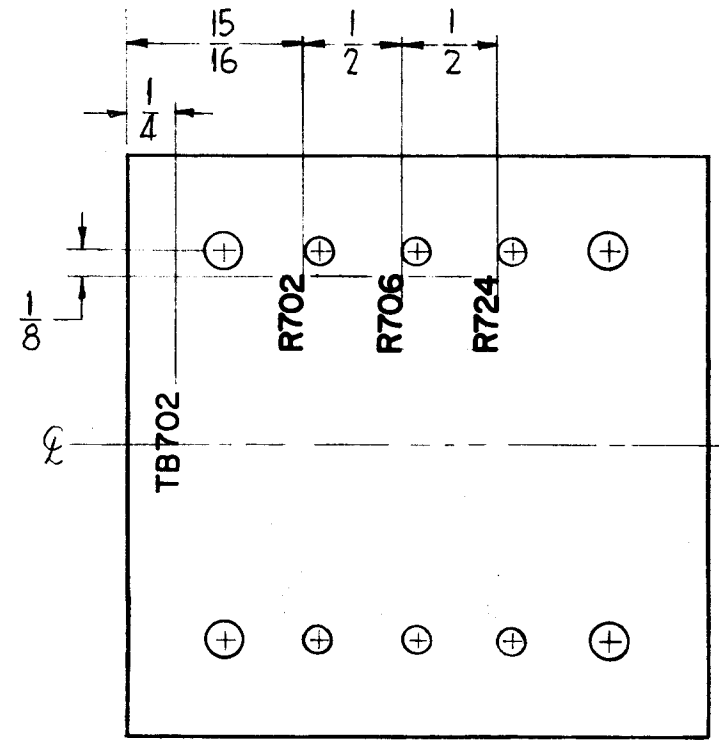


A-3009 C

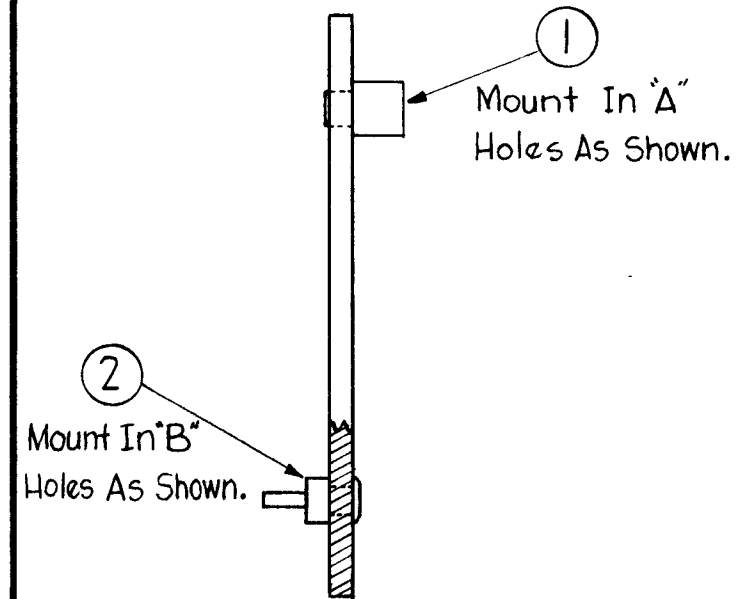


HOLES
 A ~ .189 Dia. Req. 4
 B ~ .113 Dia. Req. 6

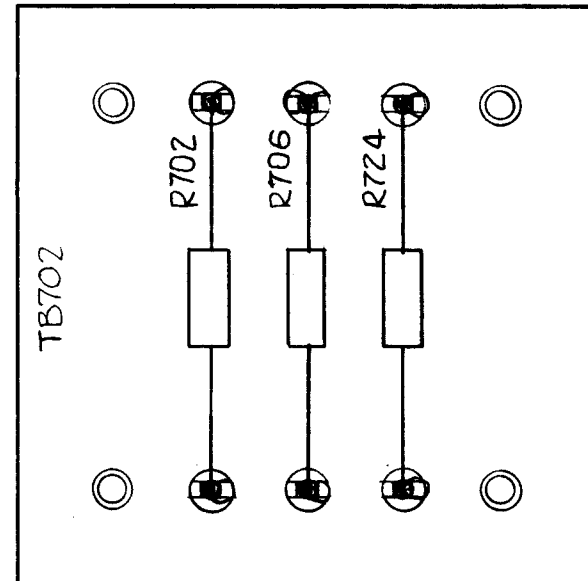
MACHINING ~ A-3009-1 ~ Material ~ XXXP 1/8" THK Phenolic



LETTERING ~ A-3009-2 ~ All Lettering 1/8" High Black Gothic



SUB-ASSEMBLY ~ A-3009-3



FINAL-ASSEMBLY ~ A-3009-4

X	5	BS-100	Solder, Soft	
2	4	RC42GF101J	Resistor, Fixed	R-706 R724
1	3	RC42GF682J	Resistor, Fixed	R702
6	2	TE-109-3	Split Terminal Lug	
4	1	TE-108-22	Standoff, Rivet Type	

C	ITEM 1 WAS TE108-3	6-29-67	18321	L.A.K.		FB.
B	IT. 4, TOL. WAS "K"	12-19-66	17519	RME		
A	Item 2 Was TE-160 On A-3009-1 "A" Hole Was 3/16 Dia.	6-20-68	5090	M.A.F.		RK
SYM	DESCRIPTION	DATE	CH. NO.	DRAFTS	CHECKER	ENG. APP.

UNLESS OTHERWISE SPECIFIED:
 DIMENSIONS ARE IN INCHES
 TOLERANCES ON FRACTIONS ± 1/64 DECIMALS ± .005 ANGLES ± 1/2°
 SCALE: MAXIMUM ALLOWABLE TOLERANCES HAVE BEEN DETERMINED AND ANY DEVIATIONS WILL BE CAUSE FOR REJECTION. REMOVE ALL BURRS AND SHARP EDGES

1	PS-4A			6-12-61
REQ. PER UNIT	MODEL	SECTION	ASS'Y. NO.	DATE
USED ON				

REQ.	ITEM	PART NO.	DESCRIPTION	SYMBOL
THE TECHNICAL MATERIEL CORP. MAMARONECK, NEW YORK				
TERMINAL BOARD ASS'Y.				
MATERIAL				
TYPE & TEMPER		HEAT TREAT. SPEC.	DRAWN	CHECKER
			RK	
FINISH & SPEC. NO.			ELEC. DES. APP.	MECH. DES. APP.
				A-3009 C