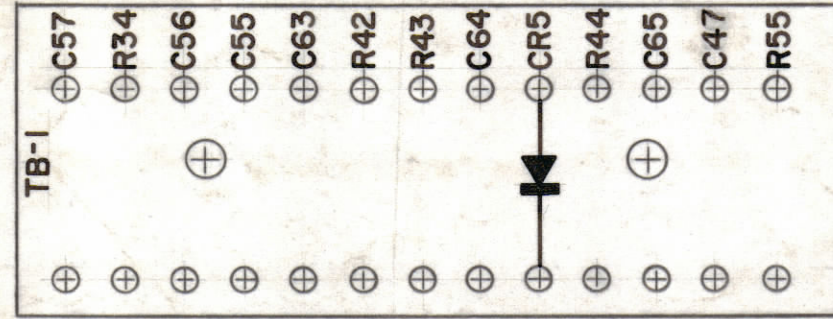
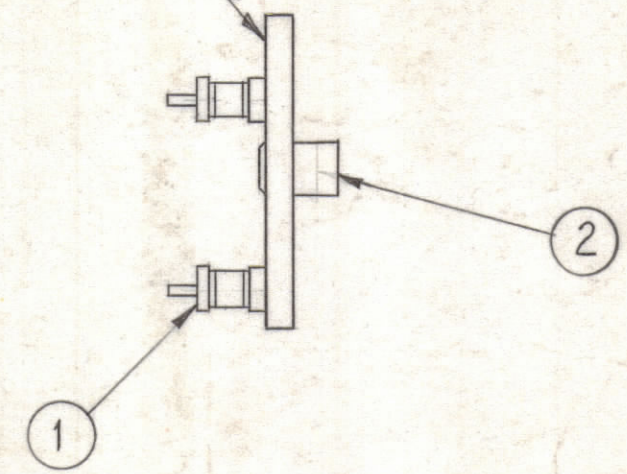


ALL LETTERING TO BE 1/8 HIGH BLACK GOTHIC.

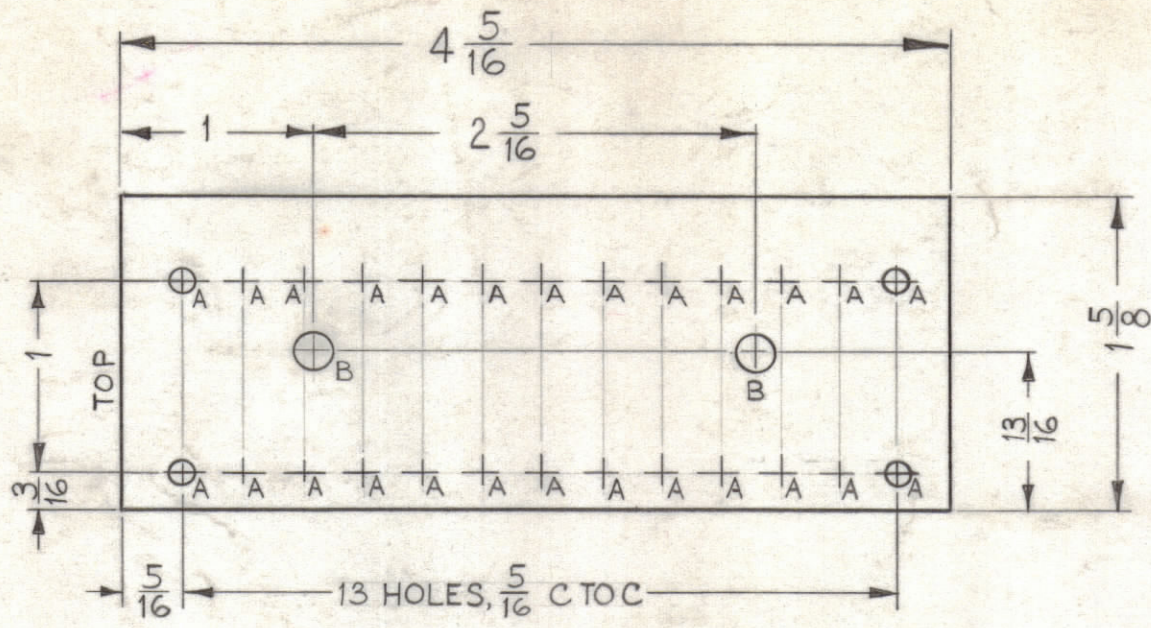


STAMPING ON THIS SIDE



STAGE 2 - STAMPING (A-3018-2).

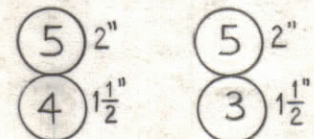
STAGE 3 - SUB-ASS'Y. (A-3018-3).



A ~ .116 DIA. 26 REQ.
B ~ .189 DIA. 2 REQ.

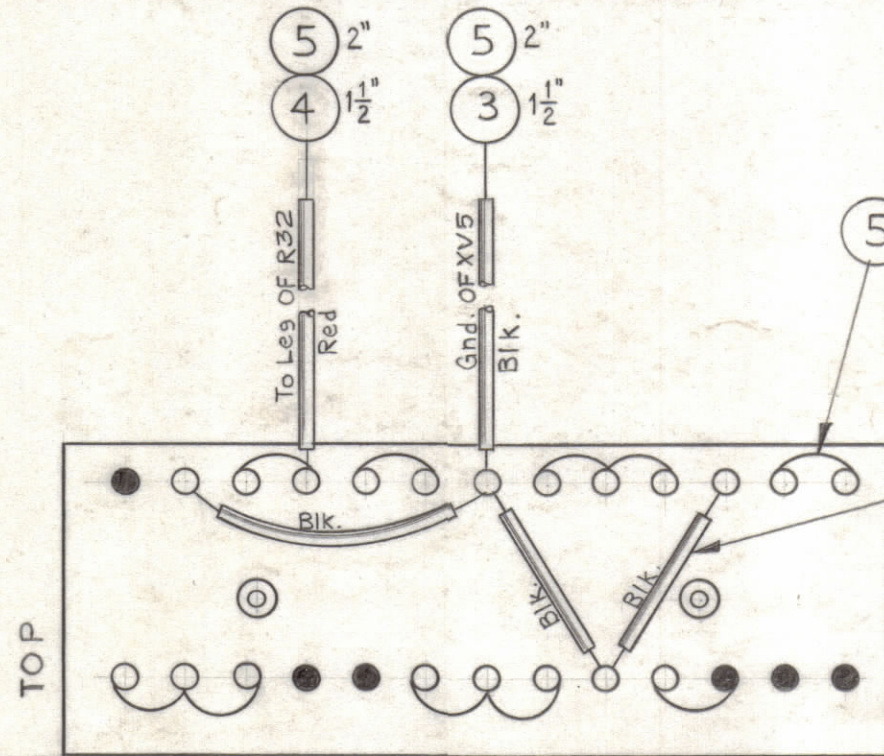
STAGE 1 - MACHINING (A-3018-1).

MATERIAL - 1/8 XXXP, PHENOLIC, FINISH - NATURAL.



5 ALL BUSS WIRE THE SAME.

3 ALL BLACK SLEEVING.



BOTTOM VIEW SHOWN.

STAGE 4 - ELECTRICAL ASS'Y. (A-3018-4).

NOTE:

● - DO NOT SOLDER

NOTICE TO PERSONS RECEIVING THIS DRAWING

THE TECHNICAL MATERIEL CORPORATION claims proprietary right in the material disclosed herein. This drawing is issued in confidence for engineering information only and may not be reproduced or used to manufacture anything shown hereon without permission from THE TECHNICAL MATERIEL CORPORATION to the user. This drawing is loaned for mutual assistance and is subject to recall at any time.

Property of:

THE TECHNICAL MATERIEL CORPORATION
MAMARONECK, NEW YORK

1	16	RC20GF754J	RESISTOR, FIXED COMPOSITION	R42
1	15	RC20GF104K	↑ ↑ ↑	R34
1	14	RC20GF273K	↑ ↑ ↑	R44
1	13	RC20GF472K	↓ ↓ ↓	R43
1	12	RC20GF101K	RESISTOR, FIXED COMPOSITION	R55
1	11	1N-100	DIODE, GERMANIUM	CR5
1	10	CN-113-1	CAPACITOR, FIXED MYLAR	C47
3	9	CM15C361J	CAPACITOR, FIXED MICA	C 55, 56 57
1	8	CC-100-32	CAPACITOR, FIXED CERAMIC	C64
2	7	CC-100-16	CAPACITOR, FIXED CERAMIC	C63, 65
X	6	BS-100	SOLDER, SOFT	
X	5	WL-100-7	WIRE, BUSS-BAR (SIZE 22)	
1 1/2	4	PX-104-3-.034	INSULATION SLEEVING	RED
1 1/2	3	PX-104-1-.034	INSULATION SLEEVING	BLACK
2	2	TE-108-13	STAND-OFF, RIVET TYPE	
26	1	TE-109-3	TERMINAL LUG	

REQ. ITEM	PART NO.	DESCRIPTION	SYMBOL
THE TECHNICAL MATERIEL CORP. MAMARONECK, NEW YORK			
STOCK SIZE			
TERMINAL BOARD #1 ASSEMBLY			
MATERIAL			
DRAWN		CHECKED	
TYPE & TEMPER		HEAT TREAT. SPEC.	
FINISH & SPEC. NO.		ELEC. DES. APP. MECH. DES. APP.	
GPE-1		7-19-61	
MODEL		SECTION	
ASS'Y. NO.		DATE	
USED ON		SHEET OF	
A-3018		A	

4	ITEM 2, WAS TE-108-3						
3	ITEM 4, OF XV5 & OF R32 ADDED						
2	SYM. C63 WAS C64, C64 WAS C63 & C47 WAS C86	8/10/61	5413	wh	RL	RK	
1	LETTERING (C47 WAS C86)						
SYM	ZONE	DESCRIPTION	DATE	CH. NO.	DRAFTS	CHECKER	ENG. APP.
UNLESS OTHERWISE SPECIFIED:			SCALE FULL (DO NOT SCALE).				
DIMENSIONS ARE IN INCHES			MAXIMUM ALLOWABLE TOLERANCES HAVE BEEN DETERMINED AND ANY DEVIATIONS WILL BE CAUSE FOR REJECTION. REMOVE ALL BURRS & SHARP EDGES				
TOLERANCES ON FRACTIONS ± 1/64			DECIMALS ± .005		ANGLES ± 1/2°		