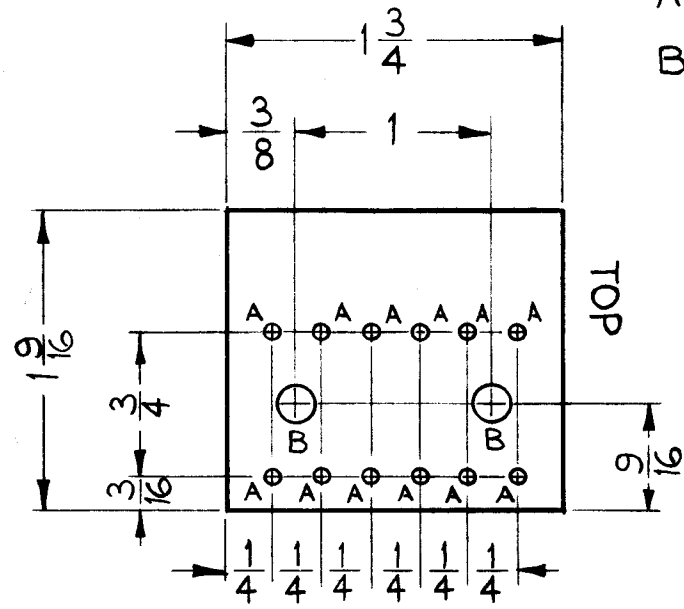


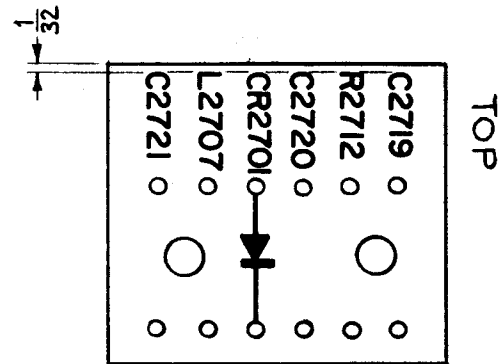
A-3025 C



A ~ .076 DIA. 12 REQ.
 B ~ .189 DIA. 2 REQ.

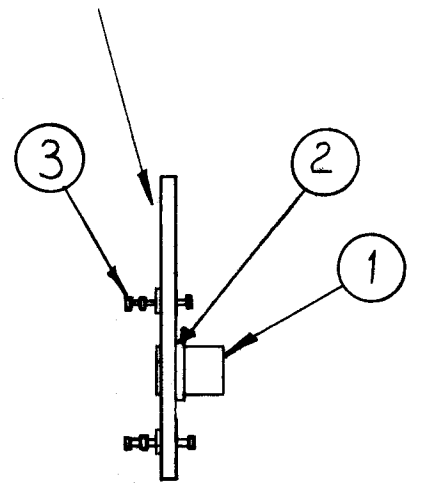
MACHINING, A-3025-1
 MATERIAL ~ 1/16, XXXP, PHENOLIC.

ALL LETTERING TO BE 1/8 HIGH BLACK GOTHIC.



LETTERING, A-3025-2

LETTERING ON THIS SIDE



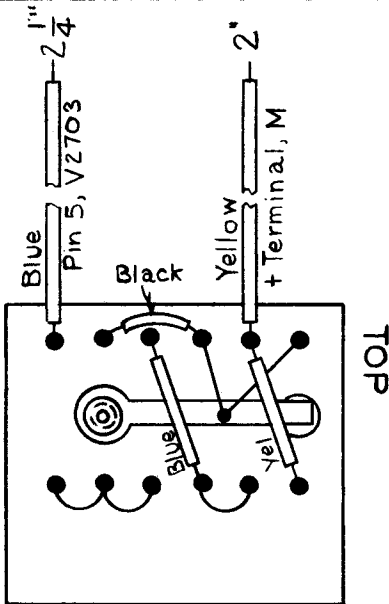
SUB-ASS'Y, A-3025-3

NOTICE TO PERSONS RECEIVING THIS DRAWING

THE TECHNICAL MATERIEL CORPORATION claims proprietary right in the material disclosed hereon. This drawing is issued in confidence for engineering information only and may not be reproduced or used to manufacture anything shown hereon without permission from THE TECHNICAL MATERIEL CORPORATION to the user. This drawing is loaned for mutual assistance and is subject to recall at any time.

Property of:

THE TECHNICAL MATERIEL CORPORATION
 MAMARONECK, NEW YORK



(BOTTOM VIEW SHOWN)

FINAL ASS'Y, A-3025-4

X	12	BS-100	SOLDER, SOFT	
1	11	CL-140-1	CHOKE, R.F	L2707
1	10	IN-303	DIODE	CR2701
3	9	CC-100-16	CAPACITOR, DISC.	C2719, 20, 21
1	8	RC-20GF184J	RESISTOR, FIXED CARBON	R2712
X	7	PX-104-6-.022	INSULATION, SLEEVING	Blue
X	6	PX-104-2-.022	INSULATION, SLEEVING	Yellow
X	5	PX-104-1-.022	INSULATION, SLEEVING	Black
X	4	WL-100-8	WIRE, BUSS BAR, TINNED	
12	3	TE-168-4B	TERMINAL, MINATURE	
1	2	TE-116-3	SOLDER LUG	
2	1	TE-108-2	STAND-OFF, RIVET TYPE	

REQ.	ITEM	PART NO.	DESCRIPTION	SYMBOL
THE TECHNICAL MATERIEL CORP. MAMARONECK, NEW YORK				
MF METER BOARD ASS'Y.				
MATERIAL				
TYPE & TEMPER			HEAT TREAT. SPEC.	FINISH & SPEC. NO.
DRAWN		CHECKER		FINAL APPROVAL
ELEC. DES. APP.		MECH. DES. APP.		A-3025
				C

SYM	DESCRIPTION	DATE	CH. NO.	DRAFTS	CHECKER	ENG. APP.
C	IT. B WAS RC20GF184J	9-27-66	16902	WFW	WFW	WFW
B	STAGE 4, DIMS 2 1/4" x 2" ADDED	2-25-63	8324	WFW	WFW	WFW
A	ITEM 2 WAS 2 REQ'D.	8-28-61	5506	A.Y.	WFW	WFW

UNLESS OTHERWISE SPECIFIED:
 DIMENSIONS ARE IN INCHES
 TOLERANCES ON FRACTIONS ± 1/64 DECIMALS ± .005 ANGLES ± 1/2°

SCALE: Full (Do Not Scale)
 MAXIMUM ALLOWABLE TOLERANCES HAVE BEEN DETERMINED AND ANY DEVIATIONS WILL BE CAUSE FOR REJECTION. REMOVE ALL BURRS AND SHARP EDGES

1	CHG-2	MF/RF	6-20-61
REQ. PER UNIT	MODEL	SECTION	ASS'Y. NO. DATE
USED ON			