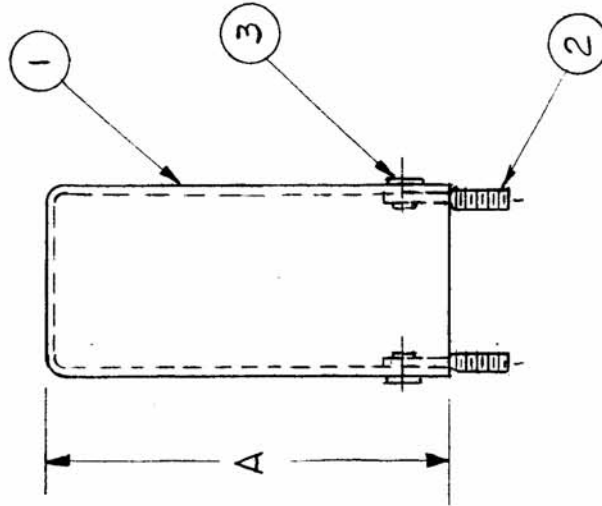
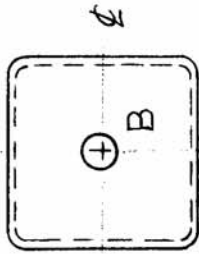


A-3029 C

PER. UNIT	MODEL	ASSY. NO.	DATE
(-1)	GPR-92		6-30-61
4(-2)	AFC-Z		11-15-61

B~(SEE CHART) 1REQ.



TMC PART NO	A LENGTH	B HOLE DIA	CAN (ITEM 1)
A-3029-1	2 1/8	3/16	FP-182-7
A-3029-2	1 3/16	3/16	FP-182-8

NOTICE TO PERSONS RECEIVING THIS DRAWING

THE TECHNICAL MATERIEL CORPORATION claims proprietary right in the material disclosed hereon. This drawing is issued in confidence for engineering information only and may not be reproduced or used to manufacture anything shown hereon without permission from THE TECHNICAL MATERIEL CORPORATION to the user. This drawing is loaned for mutual assistance and is subject to recall at any time.

Property of:

THE TECHNICAL MATERIEL CORPORATION
MAMARONECK, NEW YORK

REQ. ITEM	PART NO.	DESCRIPTION	SYMBOL
2 3	EY-100-1	EYELET, FLAT FLANGE	
2 2	SC-106-1	BOLT, SPADE	
1 1	SEE CHART	CAN, MACHINING	
STOCK SIZE		ALUMINUM	
MATERIAL			
TYPE & TEMPER		HEATTREAT. SPEC.	
FINISH & SPEC. NO.			

ISSUE ITEM	CHANGED FROM	DATE	CH. NO.	DRAFTS	CHECKER	ENG. APP.
C	FINISH DELETED	11-14-66	17252	WHU	[Signature]	
B	5107 WATER PIP LACQUER WAS YELLOW IRIDITE	6-6-62	6748	V.R.R.	[Signature]	
A	A-3029-2 Added (CHART) FP-182-7 Was FP-102-7	11-15-61	5878	L.I.A.	[Signature]	

SCALE: _____

MAXIMUM ALLOWABLE TOLERANCES HAVE BEEN DETERMINED AND ANY DEVIATIONS WILL BE CAUSE FOR REJECTION. REMOVE ALL BURRS AND SHARP EDGES

TOLERANCES

DEC. DIM. ±

FRAC. DIM. ± 1/64

ANGULAR DIM. ±

THE TECHNICAL MATERIEL CORP.
MAMARONECK, NEW YORK
CAN ASSY

9. Schmitt
DRAWN
CHECKED
FINAL APPROVAL

A-3029 C