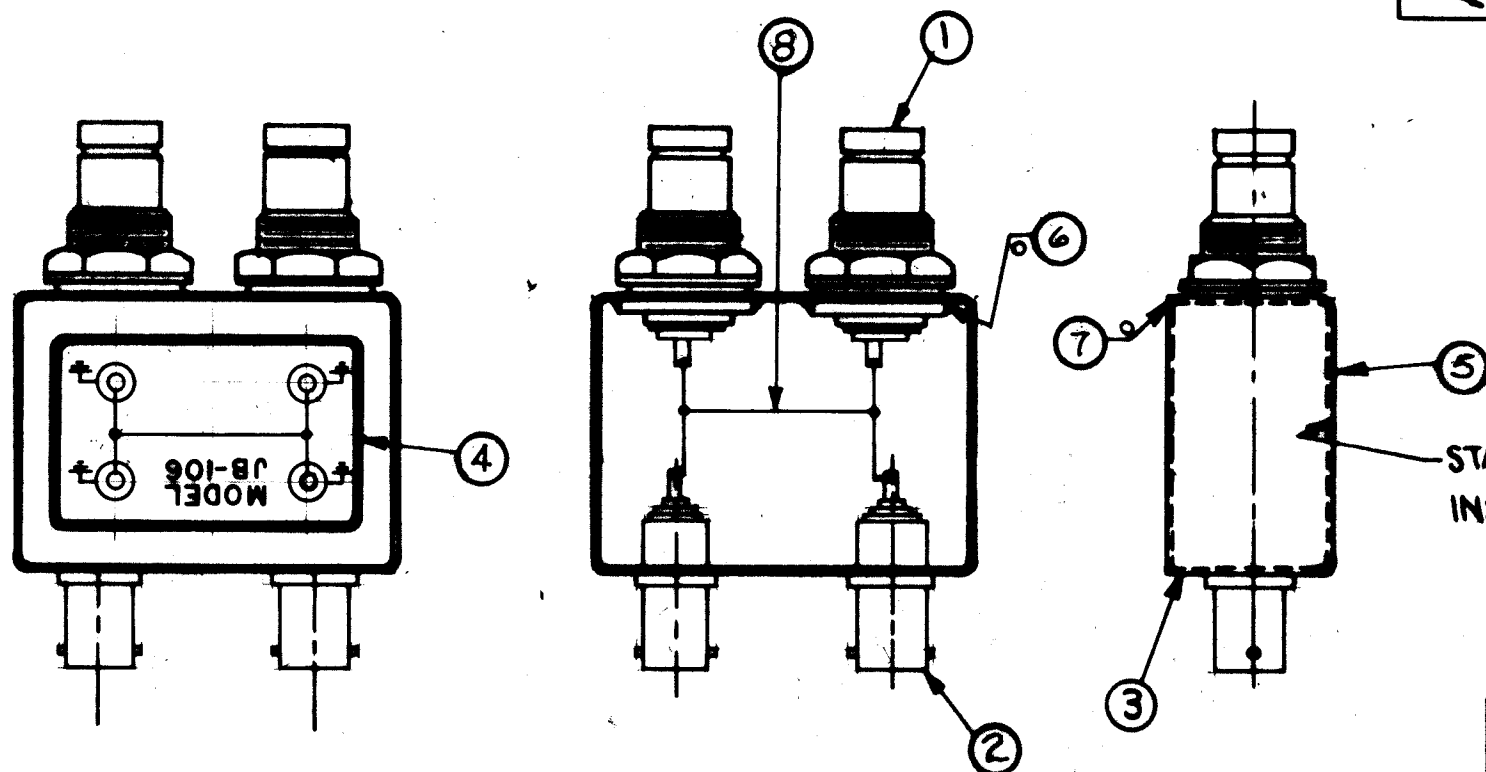


A-3087 B

REVISIONS

SYM	DESCRIPTION	DATE	E.M.N. NO.	DRAFT	CHKD
A	ITEM (1) WAS JJ-266	4-26-63	8898		
B	ITEM 3 WAS BB-200-2	9-26-74	21171	GDL	



STAMP DATE ON INSIDE SURFACE

- INDUCTION HEATING EQUIPMENT SET AT:
AMPERES -
SECONDS -
 - USE ITEM SEVEN(7) FOR MOUNTING ITEMS ONE (1) AND TWO(2).
 - USE ITEM EIGHT(8) FOR SEALING COVER ITEM THREE(3).
 - FINISH AS FOLLOWS:
S-114 - ZINC CHROMATE PRIMER
S-115 - TMC SMOOTH GREY ENAMEL
(DO NOT PAINT CONNECTOR BODIES.)
 - AFFIX ITEM FIVE(4) TO FRONT AS SHOWN.
 - AFFIX ITEM SIX(5) TO REAR AS SHOWN.
- 0- DENOTES SOLDER ALL AROUND

QTY	ITEM	PART NUMBER	DESCRIPTION	SYMBOL
1"	8	WL-100-5	WIRE, BUSS-BAR #18	
X	7	BS-106-2	SOLDER, SOFT 361°	
X	6	BS-106-4	SOLDER, SOFT 450°	
1	5	NP-488	NAMEPLATE, IDENTIFICATION (FOIL CAL)	
1	4	NP-532	SCHEMATIC, DIAGRAM (FOIL CAL)	
1	3	BX-200-1	CASE, COVER	
2	2	JJ-249	ADAPTOR CONNECTOR	
2	1	JJ-267	ADAPTOR, CONNECTOR	

LIST OF MATERIAL

MATERIAL	SEE LIST	THE TECHNICAL MATERIEL CORP. MAMARONECK, NEW YORK	
FINISH	SEE NOTE NO.	TITLE JB-106 ASSEMBLY	
UNLESS OTHERWISE SPECIFIED DIMENSIONS ARE IN INCHES AND INCLUDE CHEMICALLY APPLIED OR PLATED FINISHES	DRAWN M. TANTILLO	DATE 10/23/62	FINAL APPROVAL BP
DECIMALS .X ± .00 .XX ± .01 .XXX ± .005	TOLERANCES	FRACTIONS ± 1/64 ANGLES ± 6° 30'	DATE 11/7/62
ELECT. ENG.		A-3087 B	

1	JB-106	
QTY/UNIT	MODEL USED ON	ASS'Y. NO.
SCALE	CODE	
DO NOT SCALE		
THE CONTENTS OF THIS DRAWING ARE THE EXCLUSIVE PROPERTY OF THE TECHNICAL MATERIEL CORP. ITS UNAUTHORIZED USE OR REPRODUCTION IN WHOLE OR IN PART IS STRICTLY FORBIDDEN.		

NOTES