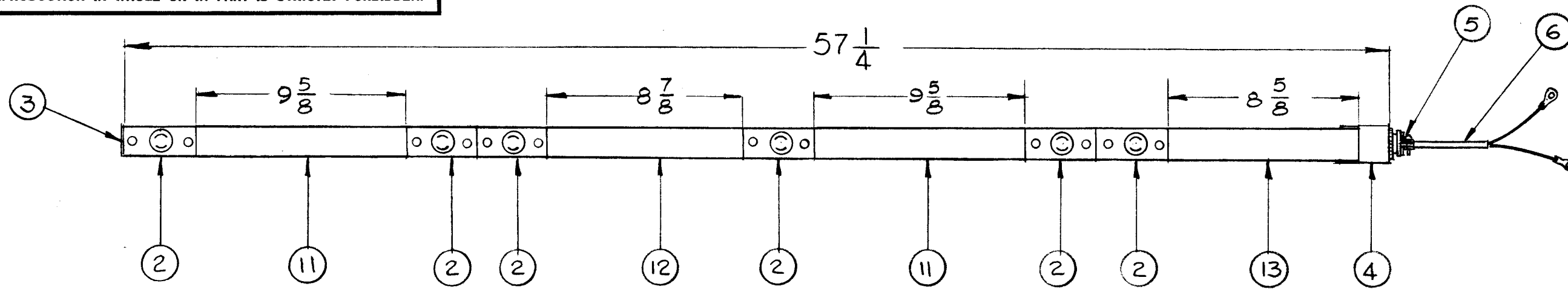
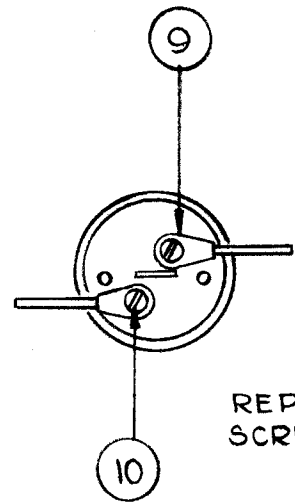


A-3114 B

THE CONTENTS OF THIS DRAWING ARE THE EXCLUSIVE PROPERTY OF THE TECHNICAL MATERIEL CORP. ITS UNAUTHORIZED USE OR REPRODUCTION IN WHOLE OR IN PART IS STRICTLY FORBIDDEN.

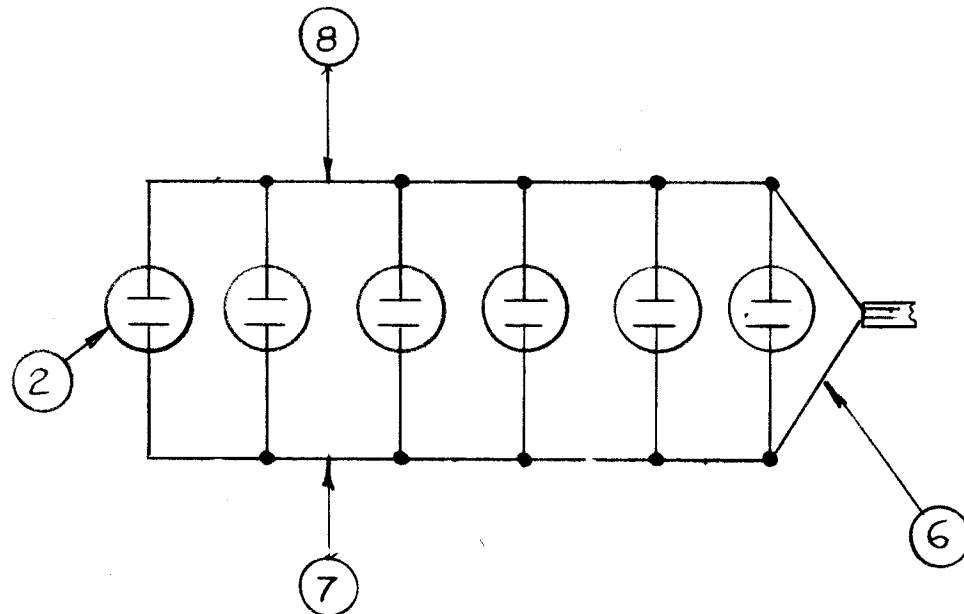


ADD ITEM 9 AFTER DISCARDING EXISTING SCREWS.



REPLACE EXISTING SCREWS WITH ITEM 10

HOOK-UP OF ITEM 2



— SCHEMATIC DIAGRAM —

X	14	BS-100	SOLDER, SOFT		
1	13	PO-163-8.625	COVER, CONNECTOR STRIP		
1	12	PO-163-8.875	COVER, CONNECTOR STRIP		
2	11	PO-163-9.625	COVER, CONNECTOR STRIP		
12	10	SCBP0540BN3	SCREW, MACHINE		
12	9	TE-112-2	TERMINAL, LUG		
X	8	MWC14(19)U9	WIRE, ELECTRICAL		WHITE
X	7	MWC14(19)U0	WIRE, ELECTRICAL		BLACK
1	6	CA-588-3	CABLE ASSEMBLY, AC INPUT		
1	5	CJ-113	CLAMP, CABLE		
1	4	PO-162	END FITTING, CABLE ENTRY		
1	3	PO-161	END FITTING, BLANK		
6	2	JJ-170	CONNECTOR, RECEPTACLE, TWIST-LOCK A.C.		
1	1	MS-3086	CHANNEL, AC STRIP		

REQ.	ITEM	PART NO.	STRUMER DESCRIPTION	SYMBOL
THE TECHNICAL MATERIEL CORP. MAMARONECK, NEW YORK				
AX-416 ASSEMBLY (A.C. POWER STRIP)				
G.D.L. <i>[Signature]</i> <sup>3/15/63</sup> <i>[Signature]</i> <sup>3/15/63</sup>				
TYPE & TEMPER		HEAT TREAT. SPEC.		FINAL APPROVAL
				<i>[Signature]</i>
FINISH & SPEC. NO.			A-3114	

IT. 9 WAS 14 REQ.	8/30/64	11670	A.M.	<i>[Signature]</i>		
B ITEMS 7 & 8 WERE MWC14(9)	8-27-63	9845	<i>[Signature]</i>	<i>[Signature]</i>		
A IN BUILD-UP DESCRIPTIONS UP-DATED						
SYM	DESCRIPTION	DATE	CH. NO.	DRAFTS	CHECKER	ENG. APP.
UNLESS OTHERWISE SPECIFIED:		SCALE: DO NOT SCALE				
DIMENSIONS ARE IN INCHES		MAXIMUM ALLOWABLE TOLERANCES HAVE BEEN DETERMINED AND ANY DEVIATIONS WILL BE CAUSE FOR REJECTION.				
TOLERANCES ON FRACTIONS ± 1/64		REMOVE ALL BURRS AND SHARP EDGES				
DECIMALS ± .005						
ANGLES ± 1/2°						

1	RAK-30-A	A-3137	2-22-63
REQ. PER UNIT	MODEL	SECTION	ASSY. NO. DATE
USED ON			