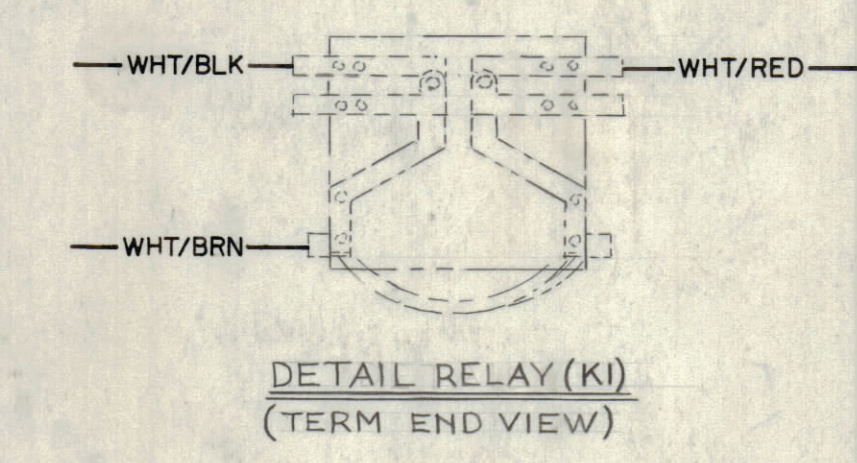
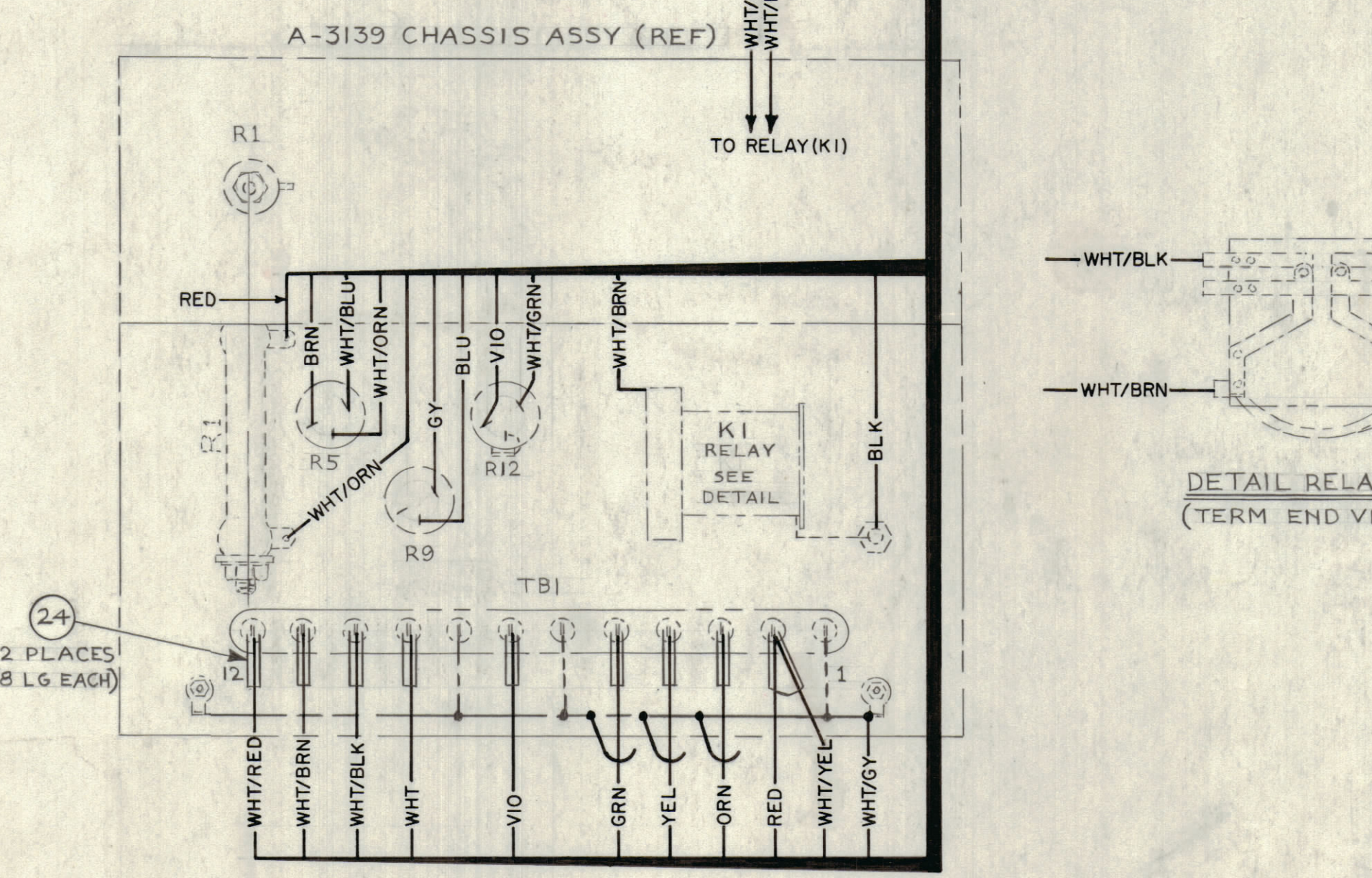
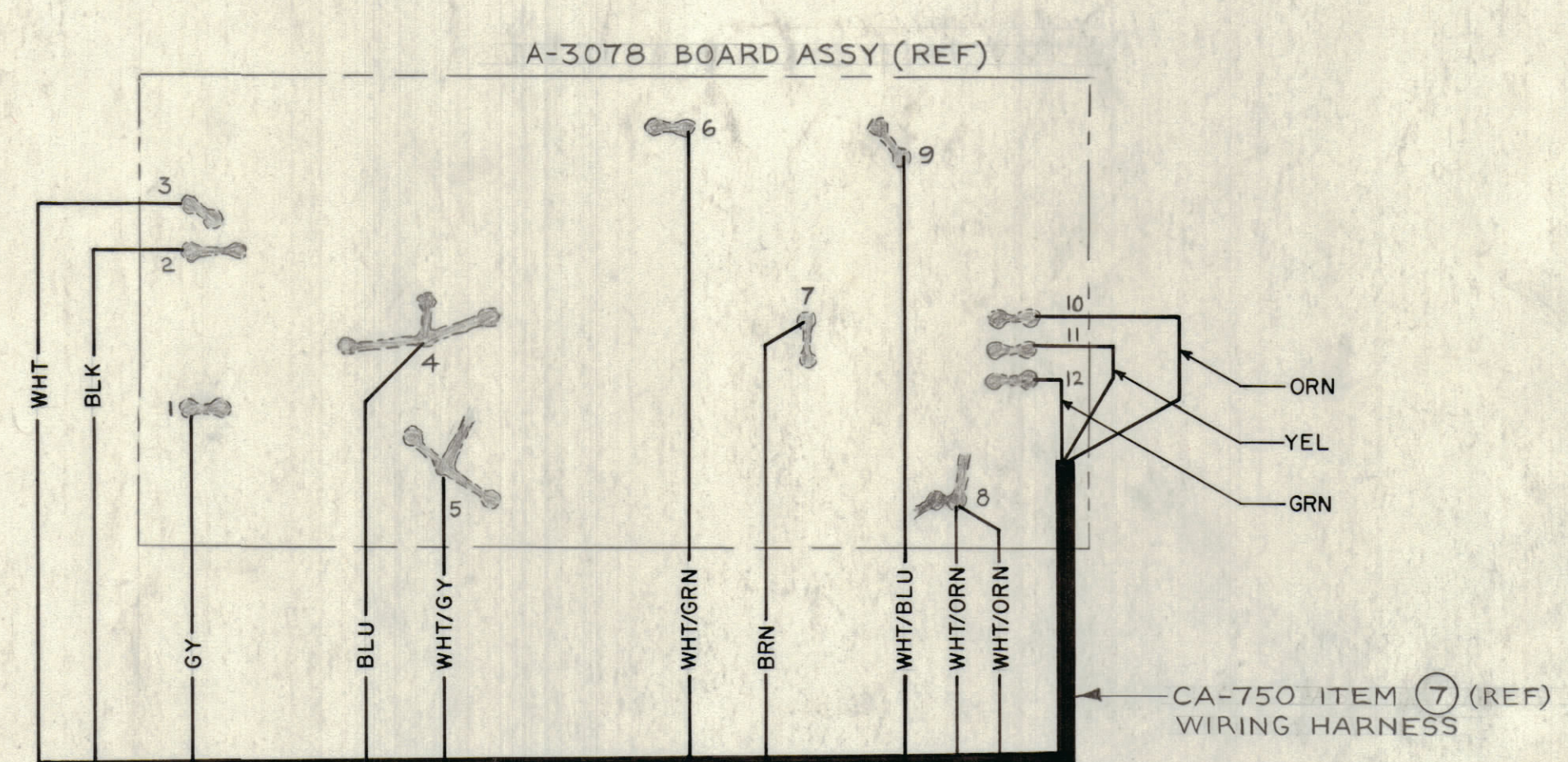
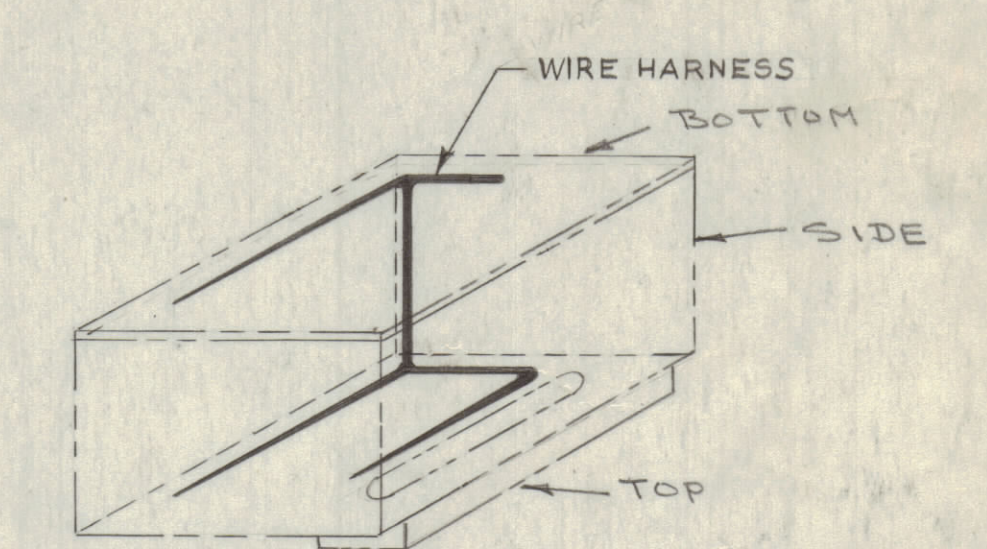
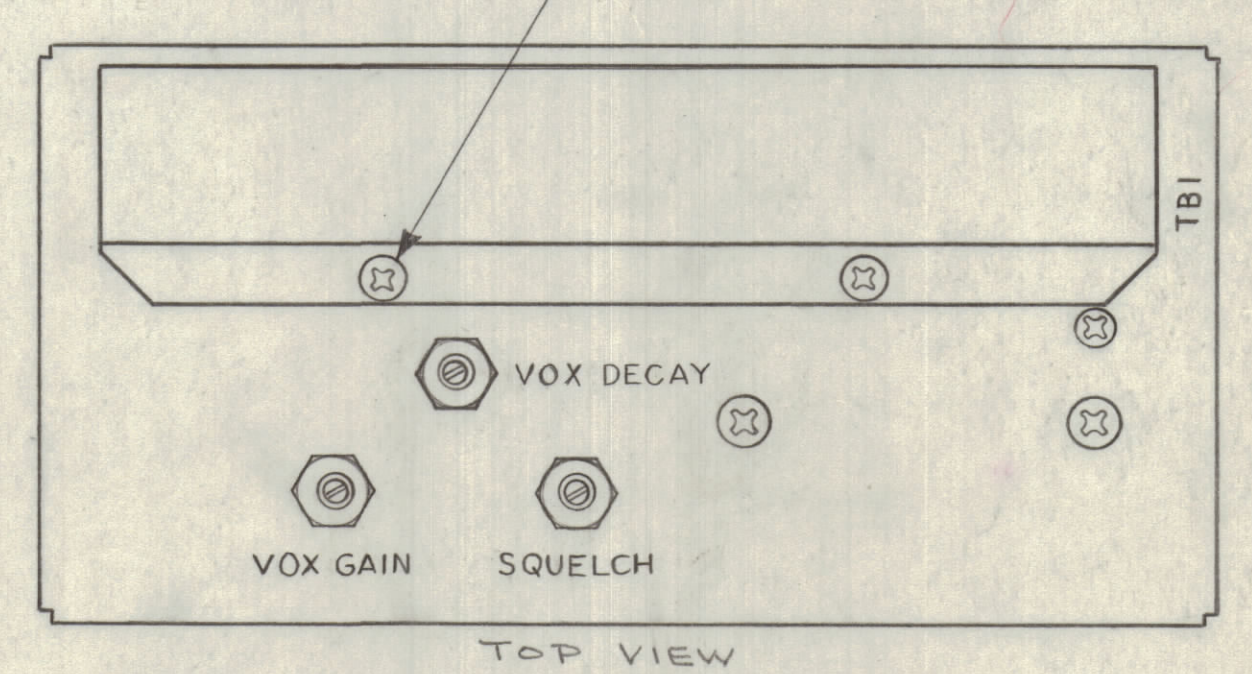
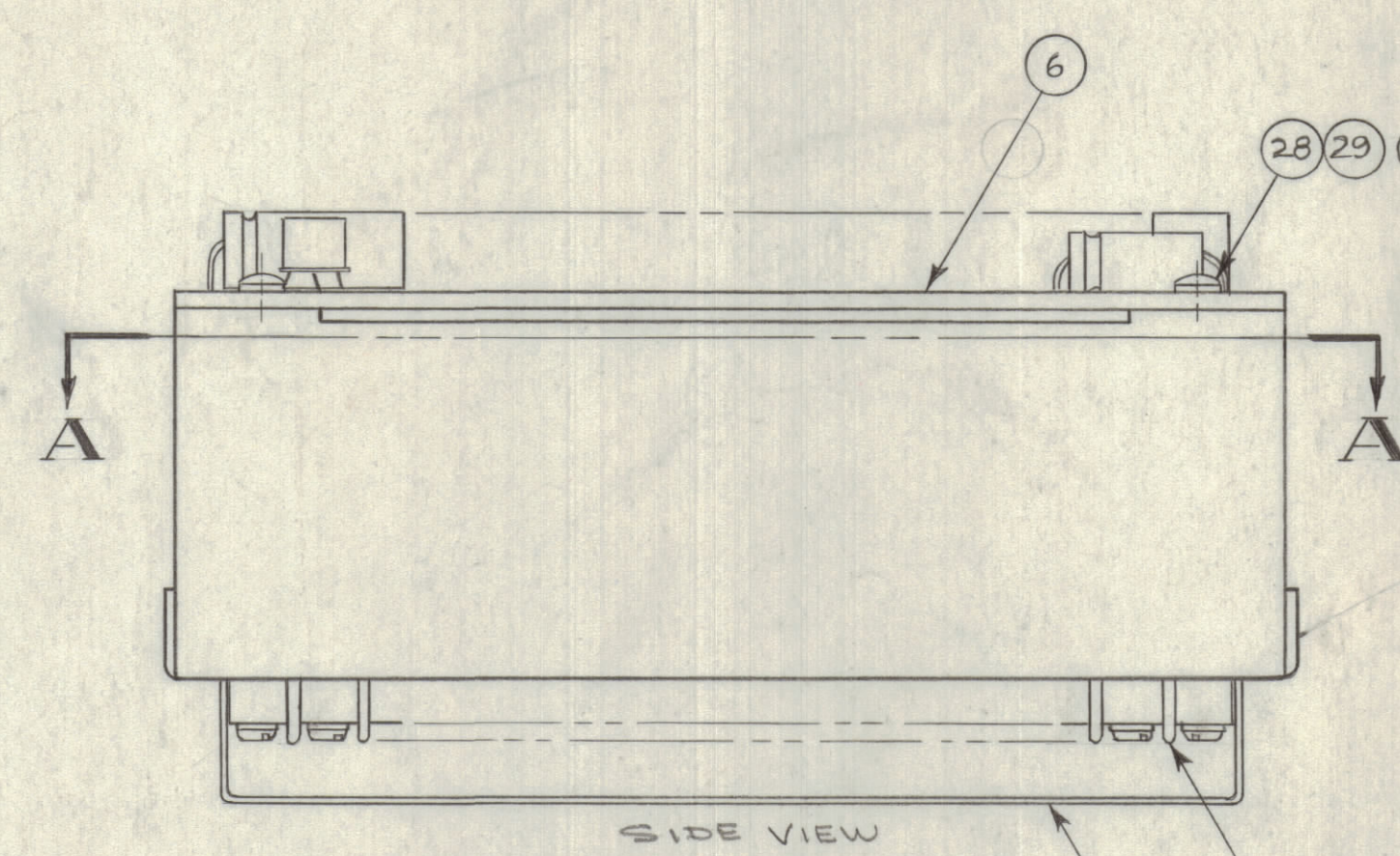
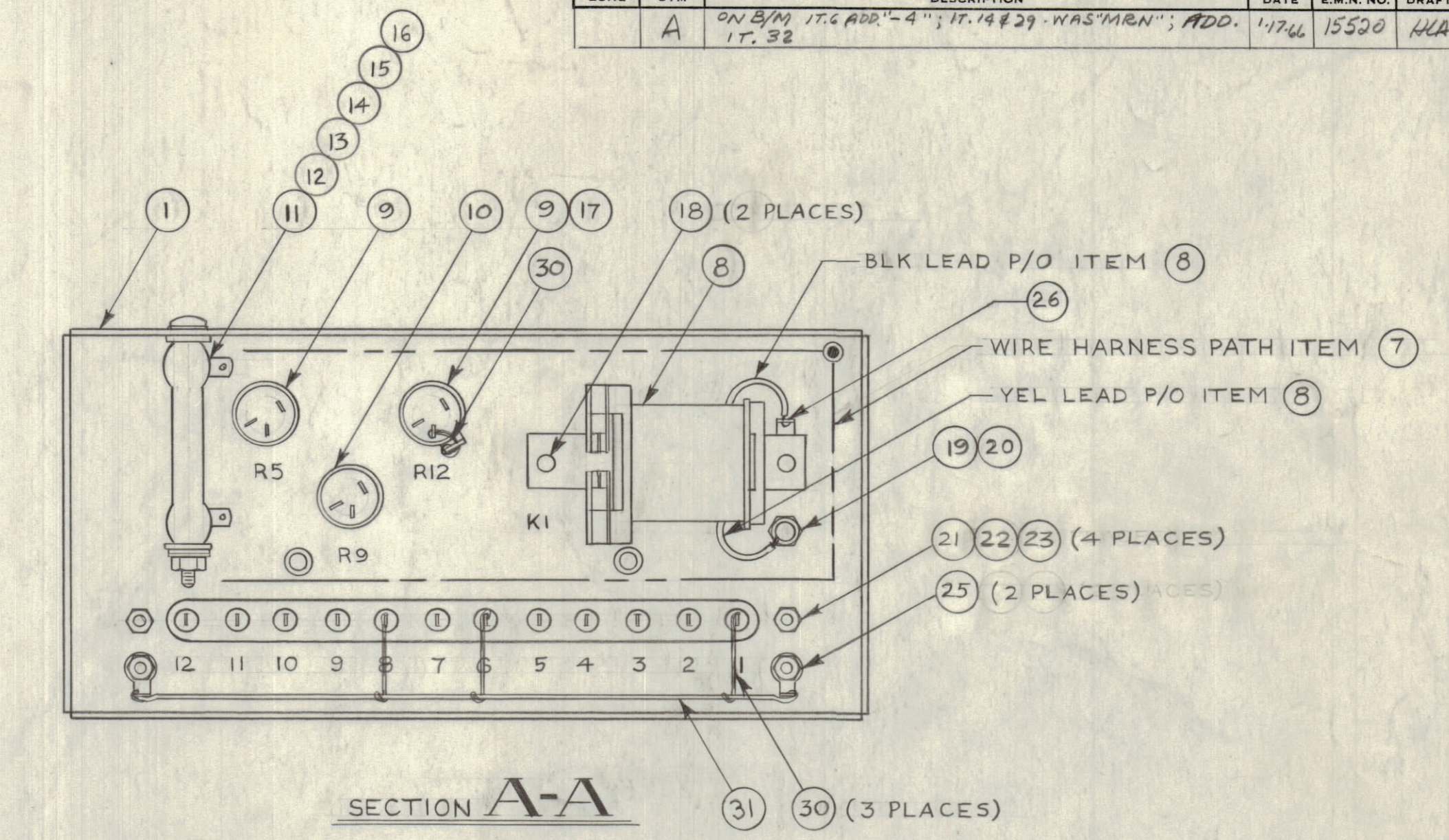


REVISIONS							
ZONE	SYM	DESCRIPTION	DATE	E.M.N. NO.	DRAFT	CHKD	APPR
A		ON B/M 17.4 ADD "4"; 17.14829 "WAS MRN"; ADD. 17.66	15500	KLA			AMM



CHASSIS WIRING



WIRE HARNESS PATH

QTY	ITEM	PART NUMBER	DESCRIPTION	SYMBOL
4	29	FW04HBN	WASHER, FLAT	
4	28	SCBP0440BN4	SCREW MACHINE	
2	27	SCBP0632BN5	SCREW MACHINE	
1	26	TE-104-2	LUG	
2	25	TE-149-144	LUG	
AR	24	PX-100-1-.085	INSULATION, SLEEVING	
4	23	NTH0440BN6	NUT, HEX	
4	22	LWE04MRN	WASHER, LOCK, EXT.	
4	21	SCBP0440BN10	SCREW MACHINE	
1	20	SCBP0440BN3	SCREW MACHINE	
1	19	TE-102-2	TERMINAL, TURRET	
2	18	SCBP0632BN4	SCREW MACHINE	
1	17	TE-132	LUG	
1	16	NTH0632BN8	NUT, HEX	
1	15	LWE06MRN	WASHER, LOCK, EXT.	
1	14	FW06HBN	WASHER, FLAT	
2	13	WA-101-3	WASHER, FIBER	
1	12	SCBP0632BN36	SCREW MACHINE	
1	11	RW-109-32	RESISTOR, FIXED, WIRE WOUND	R1
1	10	RV106UX8B503A	RESISTOR, VARIABLE, COMPOSITION	R9
2	9	RV106UX8B102A	RESISTOR, VARIABLE, COMPOSITION	R5, R12
1	8	RL-151	RELAY, SIGMA TYPE 42 FJ97598	K1
1	7	CA-750	WIRING HARNESS, BRANCHED	
1	6	A-3078-4	PRINTED ELECTRICAL CIRCUIT	
1	5	PX-337-12	INSULATOR, TERMINAL STRIP	
2	4	MS-154-1	STRADDLE PLATE	
1	3	TM-100-12	BARRIER, TERMINAL STRIP	TBI
1	2	MS-3120	COVER, TERMINAL STRIP	
1	1	MS-3017 (LD-1197)	CHASSIS, MAIN	

REQ'D.	ITEM	DESCRIPTION
X	32	BS 100 SOLDER, TIN ALLOY
AR	31	WL-100-4 WIRE, BUSS-BAR
AR	30	WL-100-6 WIRE, BUSS-BAR

SCALE	MODEL USED ON	ASBY. NO.
FULL	KIT-155	

TEST AS PER TMC SPEC. S-753

NOTES

THE CONTENTS OF THIS DRAWING ARE THE EXCLUSIVE PROPERTY OF THE TECHNICAL MATERIEL CORP. ITS UNAUTHORIZED USE OR REPRODUCTION IN WHOLE OR IN PART IS STRICTLY FORBIDDEN.

UNLESS OTHERWISE SPECIFIED DIMENSIONS ARE IN INCHES AND INCLUDE CHEMICALLY APPLIED OR PLATED FINISHES	DRAWN	DATE	FINAL APPROVAL	DATE
DECIMALS ±.05 XX ±.01 XXX ±.005	<i>[Signature]</i>	3/29/63	<i>[Signature]</i>	3/29/63
FRACTIONS ± 1/64 ANGLES ± 0° 30'	CHECKED	DATE	ELECT. DES.	DATE
TOLERANCES	<i>[Signature]</i>	3/29/63	<i>[Signature]</i>	3/29/63

THE TECHNICAL MATERIEL CORP. MAMARONECK, NEW YORK

TITLE VOICE CONTROL ASSY

A-3139

A-3139

A