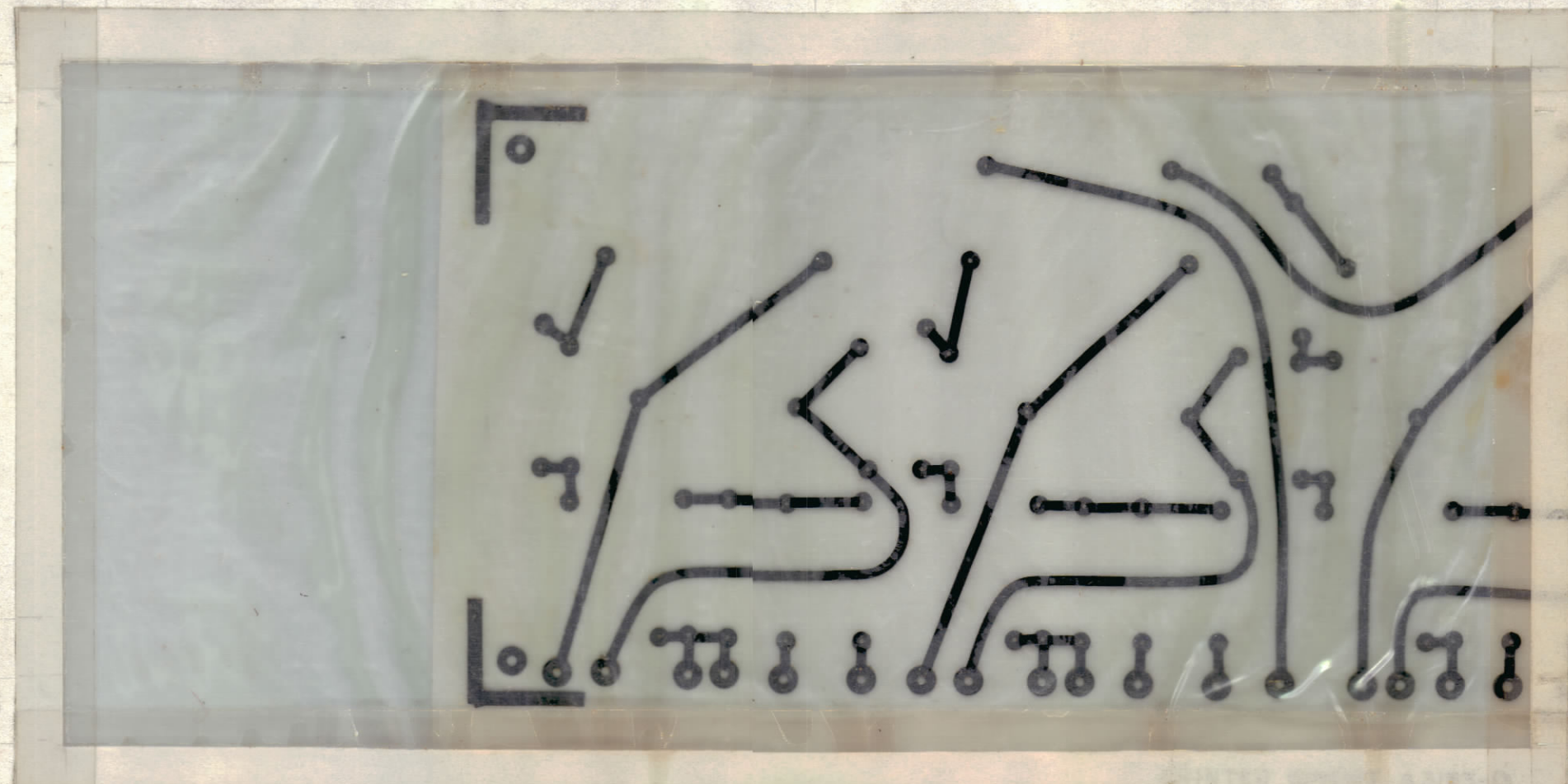


REVISIONS					
ZONE	SYM	DESCRIPTION	DATE	E.M.N. NO.	APPD
	A	BOARD COMPLETELY REVISED	5-23-64	11442	NP
C4	B	ART WORK MODIFIED	8-15-64	11504	WES
	C	CLERICAL CHANGE	3/5/65	#	CL
	D	SEE SHEET 2 OF 2	10-21-66	17019	G.D.L.



ORIGINAL ARTWORK TO BE REMOVED FROM PROTECTIVE POCKET WHEN PHOTOGRAPHING.

HOLE & PAD SPECIFICATIONS			
HOLE	DIA.	PAD DIA.	REQ'D
UNMARKED	.060	.120	64
A	.186 ^{+0.000} _{-0.003}	NONE	4
B	.078±.002	.160	18
C	.45 DRILL	NONE	3

A 3153-1 ETCHING

~ OTHER SPECIFICATIONS ~

CONDUCTOR: NOMINAL WIDTH ~ .062
 MINIMUM WIDTH ~ .040
 MINIMUM SPACING ~ .031
 NO FILLETS REQUIRED

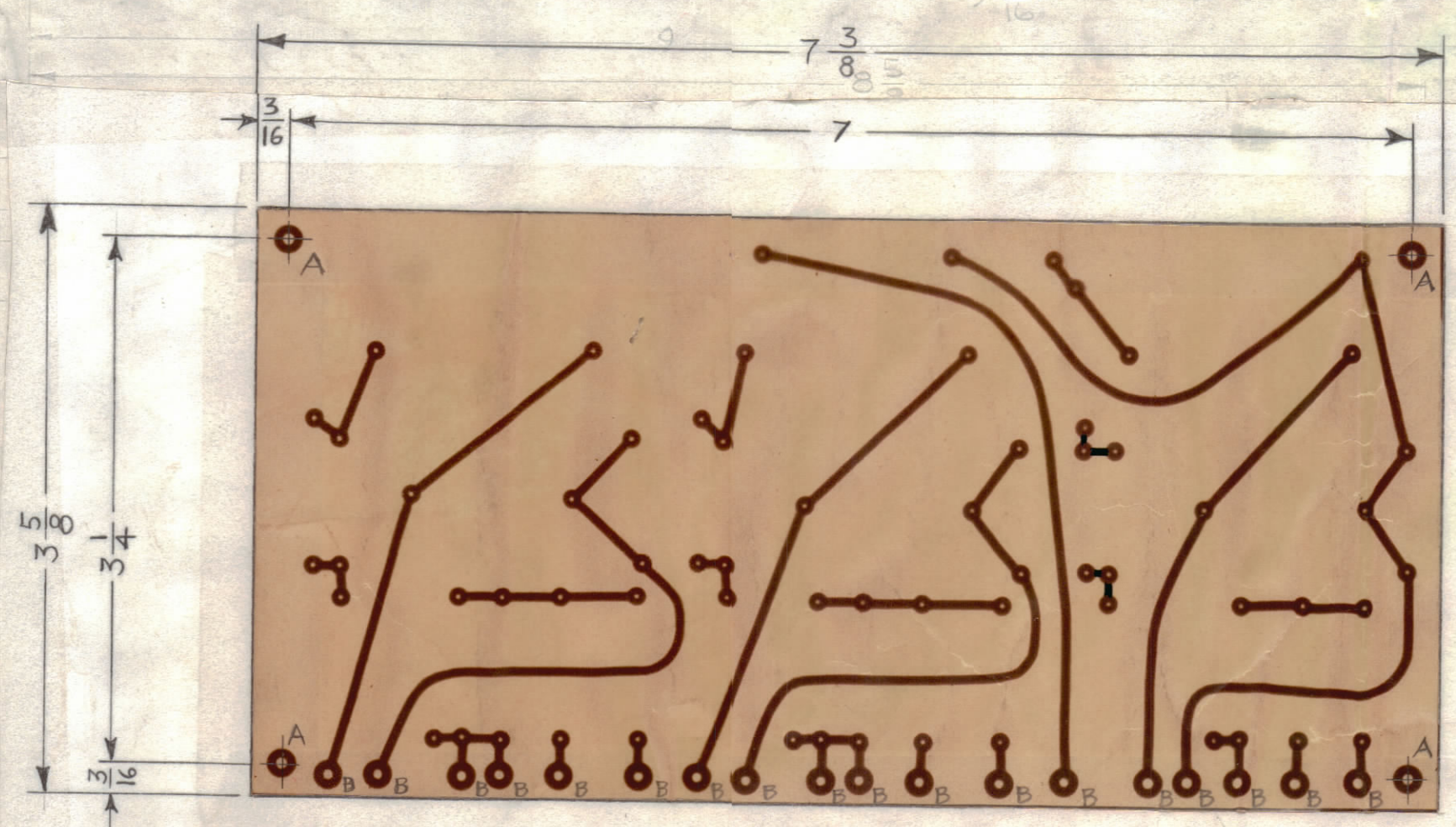
COPPER FOIL: 2 OZ. ~ ONE SIDE
 PLATING: MINIMUM THICKNESS ~ .0008
 TIN LEAD, ALL CONDUCTORS

BASE MAT'L: EPOXY G-10 3/32 THK.
 FINISH: NATURAL ~ SEMI-GLOSS

NOTES:

- CONDUCTORS MAY BE RE-ROUTED AND PADS FLATTED TO PROVIDE MINIMUM SPACING.
- LETTER DESIGNATIONS AS SHOWN ON CIRCUIT DENOTE HOLE SIZE "DO NOT PRINT".
- HOLE ARE TO BE PLATED THRU AND TO HAVE A MINIMUM COPPER THICKNESS OF .0015 AT ANY POINT WITHIN THE HOLE. THE SOLDER PLATE THICKNESS MUST BE A MINIMUM OF .0008 AS PER TMC SPEC. S-735. THE FINISHED DIA OF THE PLATED HOLE MUST BE A MINIMUM OF .050.

THE ORIGINAL ART WORK TO BE SUPPLIED BY TMC FOR PHOTOGRAPHING (SCALE 1:1)



A 3153-2 MACHINING
 DO NOT SCALE, USE ARTWORK FOR HOLE LOCATION AND EDGES.

1	TTR-10	AX-413
Q'TY./UNIT	MODEL USED ON	ASS'Y. NO.
SCALE	CODE	
1:1	A	

THE CONTENTS OF THIS DRAWING ARE THE EXCLUSIVE PROPERTY OF THE TECHNICAL MATERIEL CORP. ITS UNAUTHORIZED USE OR REPRODUCTION IN WHOLE OR IN PART IS STRICTLY FORBIDDEN.

REQ'D.	ITEM	PART NUMBER	DESCRIPTION	SYMBOL
LIST OF MATERIAL				
MATERIAL		THE TECHNICAL MATERIEL CORP. MAMARONECK, NEW YORK		
FINISH		TITLE PRINTED ELECTRICAL CIRCUIT TTR-10		
UNLESS OTHERWISE SPECIFIED DIMENSIONS ARE IN INCHES AND INCLUDE CHEMICALLY APPLIED OR PLATED FINISHES		DRAWN ADW	DATE 7-5-63	FINAL APPROVAL BP
DECIMALS .X ± .05 .XX ± .01 .XXX ± .005		CHECKED JLH	DATE 7-5-63	DATE 7-5-63
FRACTIONS ± 1/64 ANGLES ± 0° 30'		ELECT. DES. RON KOHN	DATE 7-5-63	DATE 7-5-63
TOLERANCES		MECH. DES. RON KOHN	DATE 7-5-63	DATE 7-5-63
SHEET 1 OF 2				REV. LTR.

NOTES

A 3153 D