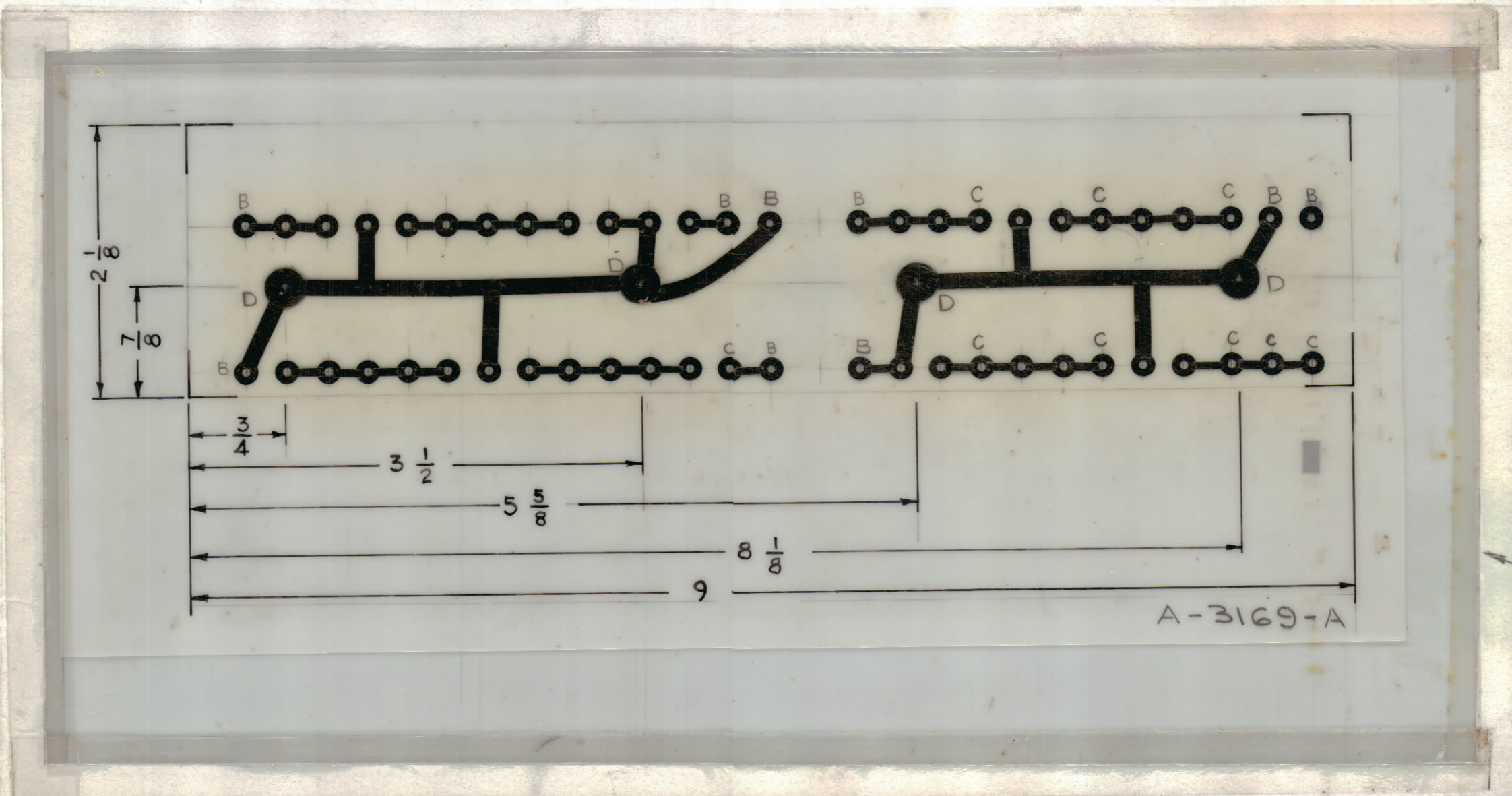


REVISIONS						
ZONE	SYM	DESCRIPTION	DATE	E.M.N. NO.	DRAFT	CHKD
-	A	SEE SHEET 2 OF 2	1/9/69	10JG1		



ORIGINAL ARTWORK IN PROTECTIVE JACKET. MAY BE REMOVED FOR MANUFACTURING PURPOSES.

HOLE	DIAMETER	PAD. DIA.	REQ'D
UNMARKED	.059	.156	32 *
B	.073	.156	9
C	.093	.156	9
D	.189	.312	4

\* ALL UNMARKED HOLES TO BE PLATED -THRU:  
 MIN. CU PLATING THICKNESS AT ANY POINT  
 WITHIN THE HOLE = .0015  
 MIN. SOLDER-PLATE THICKNESS .0008 PER  
 TMC SPECIFICATION S-735  
 FINISHED DIA. OF PLATED-THRU HOLES  
 TO BE .050 MIN.  
 BASE MATERIAL: EPOXY G-10, 3/32 THK.  
 COPPER FOIL : 1 OUNCE , ONE SIDE

NOTES

Q'TY./UNIT	MODEL USED ON	ASSY. NO.
1	LFA-4	

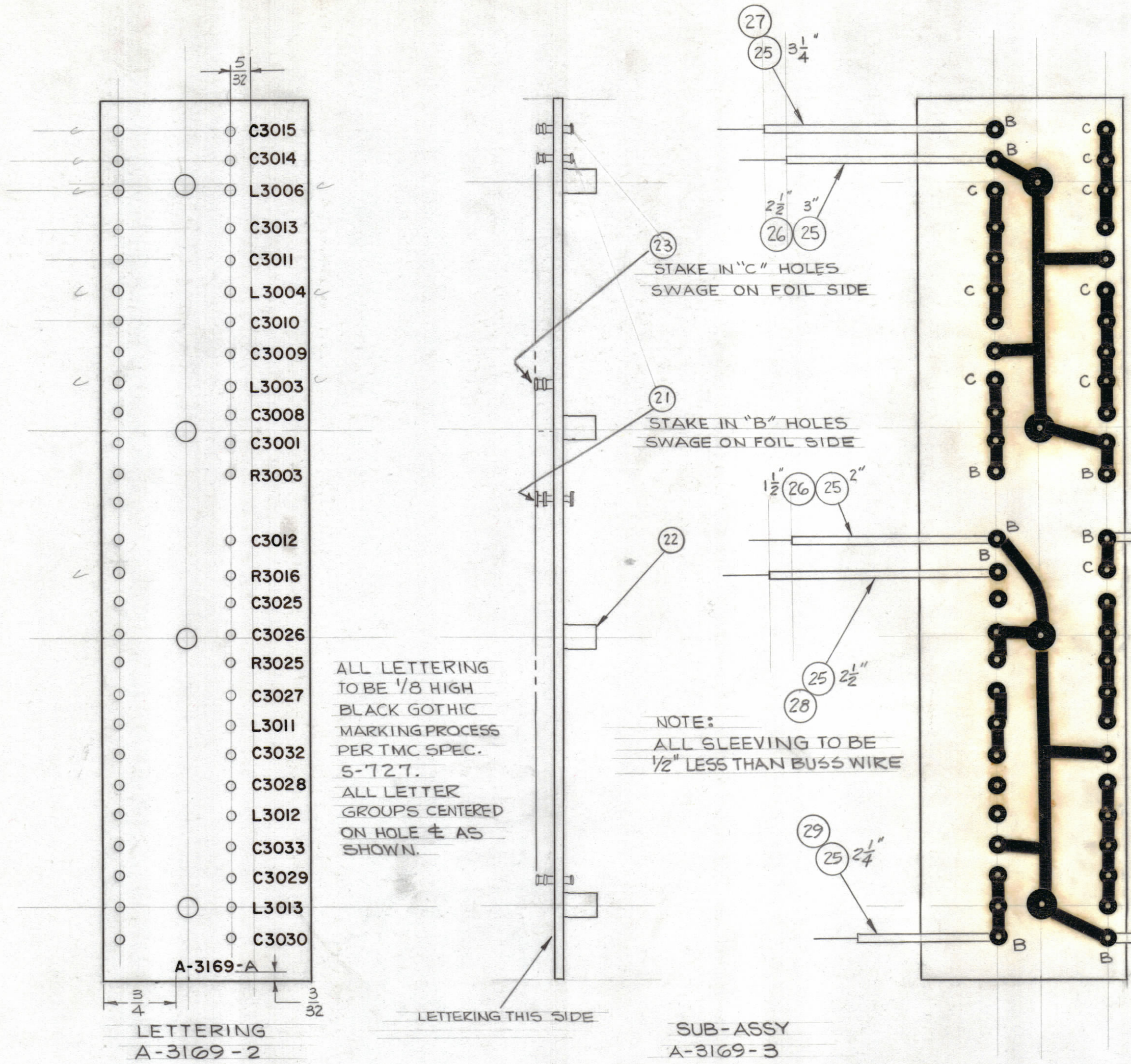
SCALE: 1:1  
 CODE: A

THE CONTENTS OF THIS DRAWING ARE THE EXCLUSIVE PROPERTY OF THE TECHNICAL MATERIEL CORP. ITS UNAUTHORIZED USE OR REPRODUCTION IN WHOLE OR IN PART IS STRICTLY FORBIDDEN.

REQ'D.	ITEM	PART NUMBER	DESCRIPTION	SYMBOL
O. POSE LIST OF MATERIAL				
MATERIAL		THE TECHNICAL MATERIEL CORP. MAMARONECK, NEW YORK		
FINISH		TITLE PRINTED CKT BOARD ASSY		
UNLESS OTHERWISE SPECIFIED DIMENSIONS ARE IN INCHES AND INCLUDE CHEMICALLY APPLIED OR PLATED FINISHES		DRAWN G.D.L	DATE 6-5-63	FINAL APPROVAL
DECIMALS X ± .05 XX ± .01 XXX ± .005		CHECKED JDe	DATE 6-6-63	DATE 6-11-63
FRACTIONS ± 1/64 ANGLES ± 0° 30'		ELECT. DES.	DATE	A-3169
TOLERANCES		MECH. DES.	DATE	A
			SHEET 1 OF 2	REV. LTR.

A-3169  
A

REVISIONS						
ZONE	SYM	DESCRIPTION	DATE	E.M.N. NO.	DRAFT	CHKD
-	A	SHEET 2 OF 2 REDRAWN WITH REVISIONS & DELETIONS (ORIG. LOST)	1/16/64	10561		



ALL LETTERING TO BE 1/8 HIGH BLACK GOTHIC MARKING PROCESS PER TMC SPEC. 5-727. ALL LETTER GROUPS CENTERED ON HOLE  $\phi$  AS SHOWN.

NOTE: ALL SLEEVING TO BE 1/2" LESS THAN BUSS WIRE

REQ'D.	ITEM	PART NUMBER	DESCRIPTION	SYMBOL
1"	30	PX-104-3-034	INSULATION SLEEVING	RED
1 3/4"	29	PX-104-4-034		GRN
2"	28	PX-104-6-034		BLU
2 3/4"	27	PX-104-2-034		YEL
6 1/4"	26	PX-104-1-034	INSULATION SLEEVING	BLK
17 1/4"	25	WL-100-7	WIRE, BUSS # 22	
X	24	BS-100	SOLDER, SOFT	
9	23	TE-127-3	TERMINAL, STUD	
4	22	TE-108-12	SPACER, RIVET TYPE	
9	21	TE-168-4-C	TERMINAL, STUD, FEED-THRU	
1	20	CM20D431 G	CAPACITOR, FIXED, MICA	C 3029
1	19	CM20E621G	CAPACITOR, FIXED, MICA	C3028
	18			
3	17	CL-240-68	COIL, RF, FIXED	L3011 THRU L3013
1	16	CM20C151J	CAPACITOR, FIXED, MICA	C3027
1	15	RC20GF221K	RESISTOR, FIXED, COMPOSITION	R3025
	14			
1	13	RC42GF562K	RESISTOR, FIXED, COMPOSITION	R3016
2	12	CN114-R10-4J	CAPACITOR, FIXED, MYLAR	C3012, C3025
1	11	RC20GF101K	RESISTOR, FIXED, COMPOSITION	R3003
3	10	CM20C132K	CAPACITOR, FIXED, MICA	
1	9	CM20D131G	CAPACITOR, FIXED, MICA	C3008
1	8	CL-315-1	COIL, RF, FIXED	L3003
2	7	CM20C182K	CAPACITOR, FIXED, MICA	C3009, C3022
1	6	CM20C601J		C3010
2	5	CM20C162J		C3011, C3033
1	4	CM20C471J	CAPACITOR, FIXED, MICA	C3013
2	3	CL-315-2	COIL, RF, FIXED	L3006, L3004
1	2	CM20C102K	CAPACITOR, FIXED, MICA	C3014
1	1	CC-100-16	CAPACITOR, FIXED, CERAMIC	C3015

0. POSE LIST OF MATERIAL

MATERIAL: \_\_\_\_\_

FINISH: \_\_\_\_\_

THE TECHNICAL MATERIEL CORP. MAMARONECK, NEW YORK

TITLE: PRINTED CIRCUIT & COMPONENT ASSY

UNLESS OTHERWISE SPECIFIED DIMENSIONS ARE IN INCHES AND INCLUDE CHEMICALLY APPLIED OR PLATED FINISHES

DECIMALS: .XX ± .01, .XXX ± .005

FRACTIONS: ± 1/64, ANGLES: ± 0° 30'

TOLERANCES

DRAWN: [Signature] DATE: 1/16/64

CHECKED: [Signature] DATE: 1/14/64

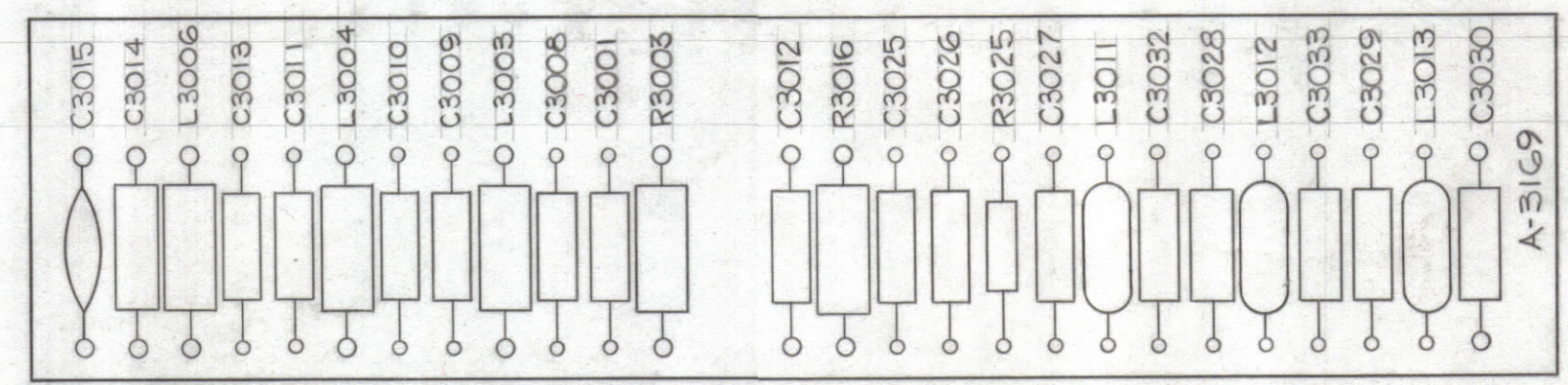
ELECT. DES. DATE: \_\_\_\_\_

MECH. DES. DATE: \_\_\_\_\_

FINAL APPROVAL: [Signature] DATE: 1/21/64

SHEET 2 OF 2

REV. LTR. 'A'



FINAL ASSY A-3169-4

NOTES

LFA-4

QTY./UNIT: 1:1

MODEL USED ON: A

ASSY. NO.:

SCALE: 1:1

CODE: A

THE CONTENTS OF THIS DRAWING ARE THE EXCLUSIVE PROPERTY OF THE TECHNICAL MATERIEL CORP. ITS UNAUTHORIZED USE OR REPRODUCTION IN WHOLE OR IN PART IS STRICTLY FORBIDDEN.