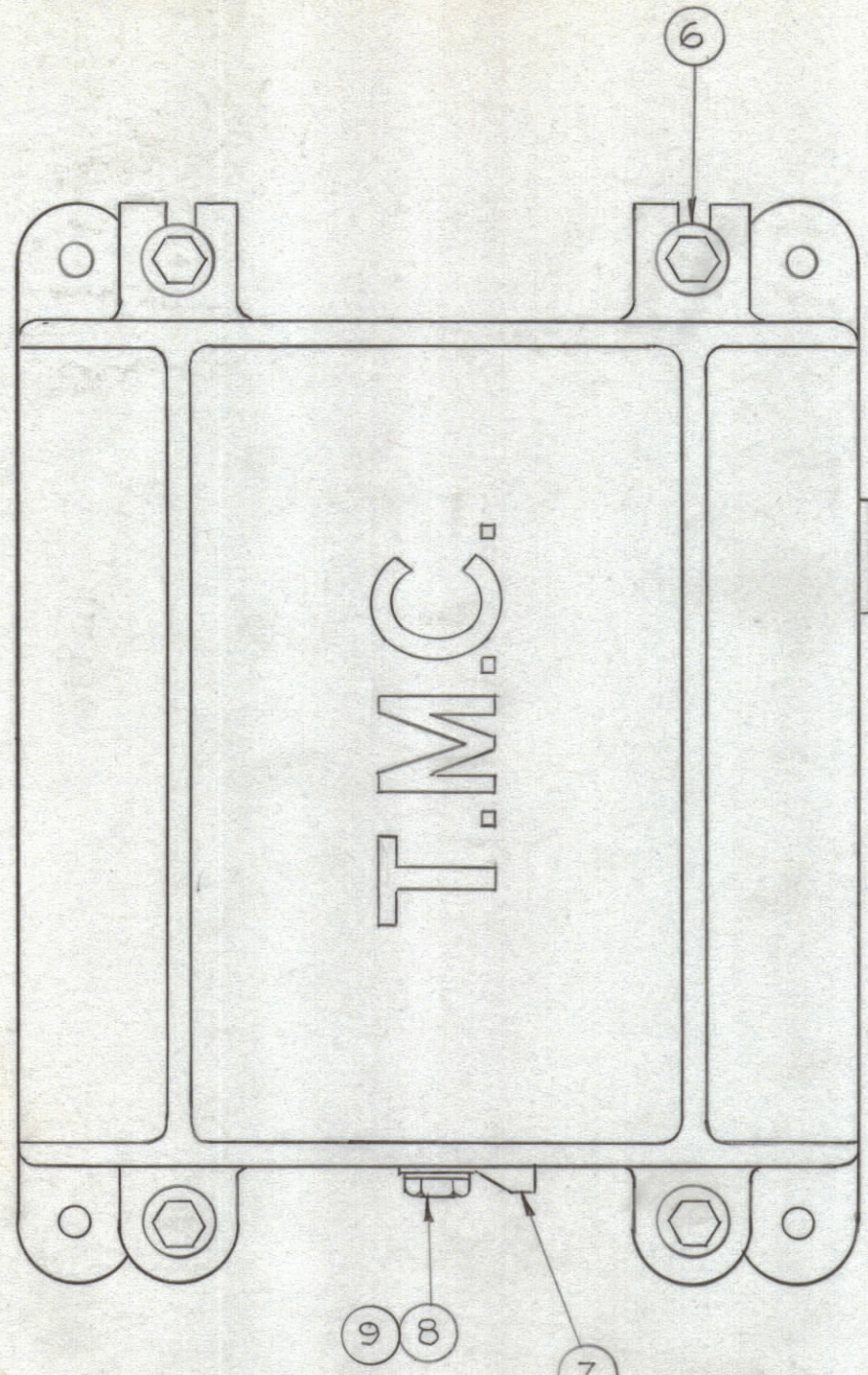
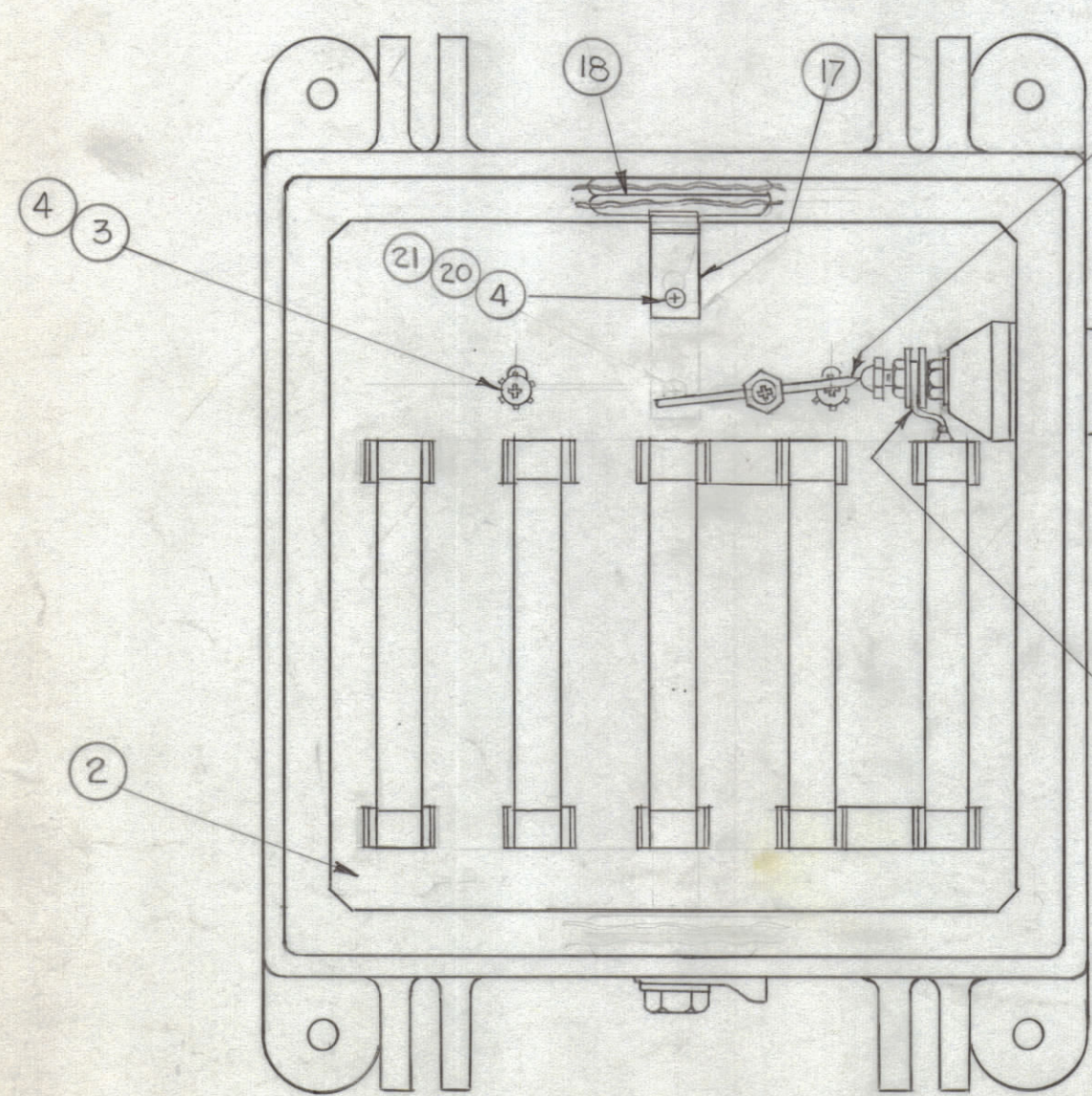
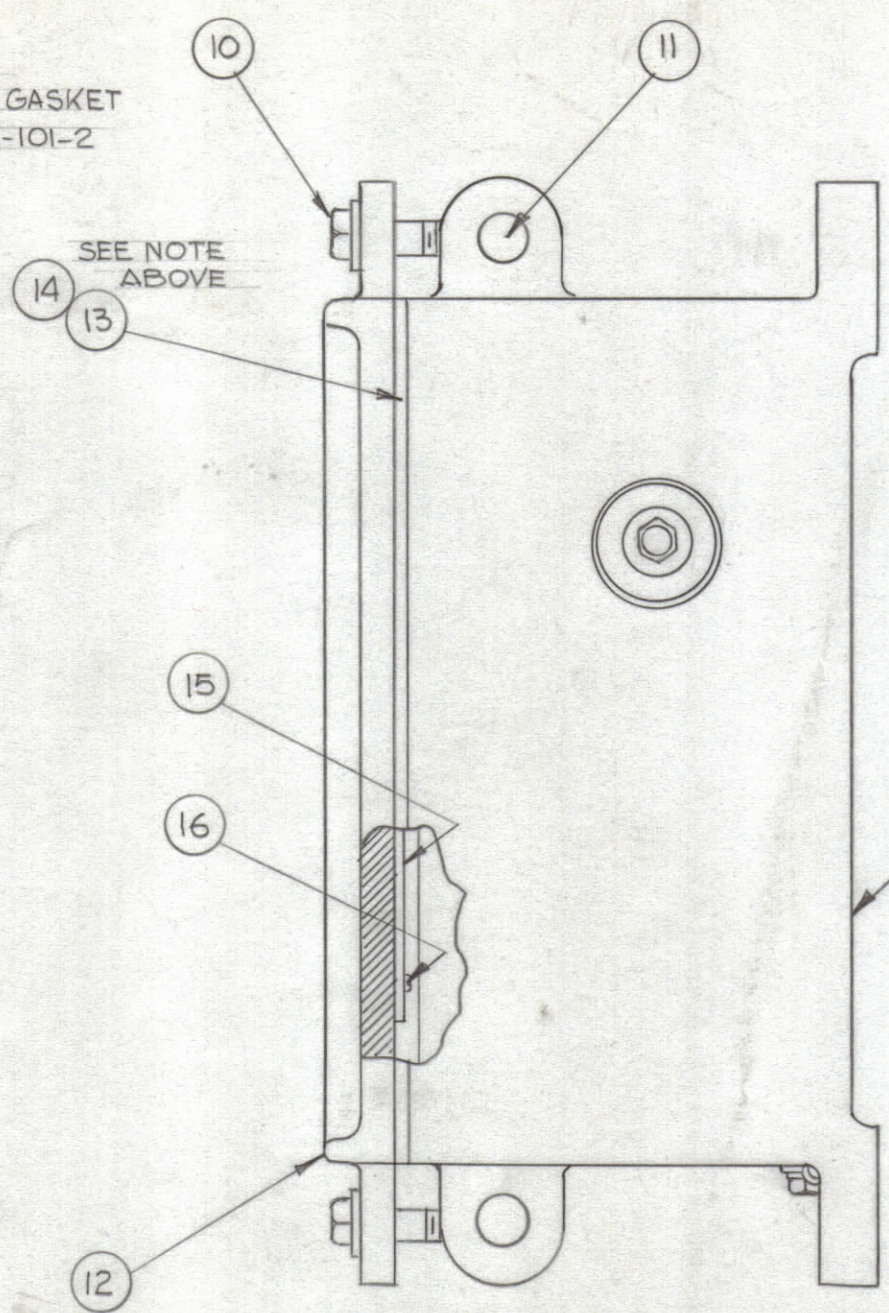


REVISIONS						
ZONE	SYM	DESCRIPTION	DATE	E.M.N. NO.	DRAFT	CHKD



NOTE :
CEMENT COVER GASKET
TO COVER W/GL-101-2



SET SPARK GAP
FOR 1/32 SPACING

NOTE : BEND WIRE AROUND
STUD AND CUT OFF
EXCESS LENGTH

INTERIOR VIEW SHOWN
(COVER REMOVED)

REQ'D.	ITEM	PART NUMBER	DESCRIPTION	SYMBOL
1	21	NTH0832BN11	NUT, HEX	
1	20	SCBP0832 BN4	SCREW, MACHINE	
1	19	S-768	TEST PROCEDURE	
2	18	AD-101-1/6	DESSICANT	
1	17	MS-933	HOLDER, DESSICANT	
4	16	SFB0256AW4	SCREW, THREAD CUTTING	
1	15	LD-630	SCHEMATIC DIAGRAM	
X	14	GL-101-2	CEMENT, PLIOBOND	
1	13	GA-103	GASKET, COVER	
1	12	PM-105	COVER, MACHINING	
4	11	PM-100	PIN, COVER BOLT	
4	10	SCHH2520SS24	SCREW, MACHINE	
1	9	LW525M55	LOCK WASHER, SPLIT	
1	8	SCHH2520SS8	SCREW, MACHINE	
1	7	TE-178-2	TERMINAL, ELECTRICAL	
4	6	FW25H55	WASHER, FLAT	
1	5	A-102	INSULATOR ASSEMBLY	
5	4	LWE08MRN	LOCKWASHER, EXTERNAL	
4	3	SCBP0832 BN6	SCREW, MACHINE	
1	2	A-3182	RESISTOR & MTG. PLATE, SUB-ASSY.	
1	1	PM-835	CASE, MACHINING	

A-3183

LIST OF MATERIAL				
MATERIAL		THE TECHNICAL MATERIEL CORP. MAMARONECK, NEW YORK		
FINISH		TITLE FINAL ASSEMBLY RHOMBIC TERMINAL UNIT RTB-6		
UNLESS OTHERWISE SPECIFIED DIMENSIONS ARE IN INCHES AND INCLUDE CHEMICALLY APPLIED OR PLATED FINISHES	DRAWN G.D.L.	DATE 6-5-63	FINAL APPROVAL YFH	DATE 7.10.63
DECIMALS .X ± .05 .XX ± .01 .XXX ± .005	TOLERANCES	CHECKED H.W.	DATE 7-8-63	DATE
FRACTIONS ± 1/64 ANGLES ± 0° 30'		ELECT. DES. NWA 7/9/63	DATE	DATE
		MECH. DES.	DATE	DATE
			DATE	DATE

RTB-6		
QTY./UNIT	MODEL USED ON	ASS'Y. NO.
SCALE 1/2	CODE	

NOTES

THE CONTENTS OF THIS DRAWING ARE THE EXCLUSIVE PROPERTY OF THE TECHNICAL MATERIEL CORP. ITS UNAUTHORIZED USE OR REPRODUCTION IN WHOLE OR IN PART IS STRICTLY FORBIDDEN.