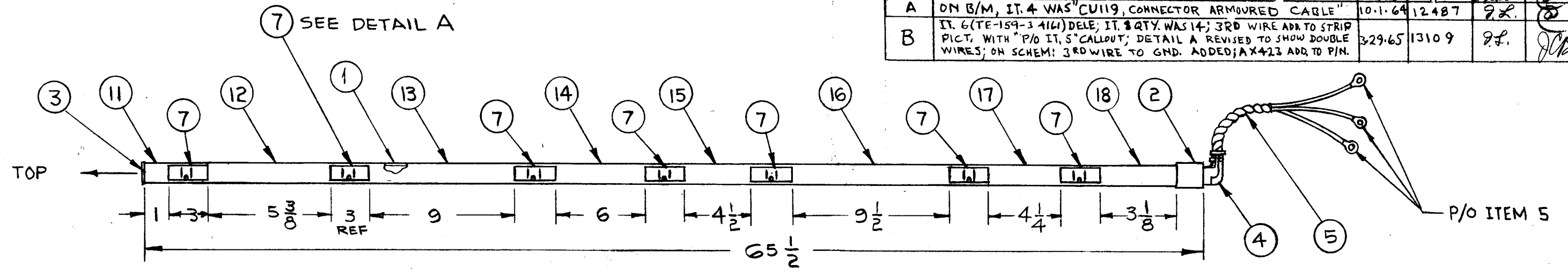


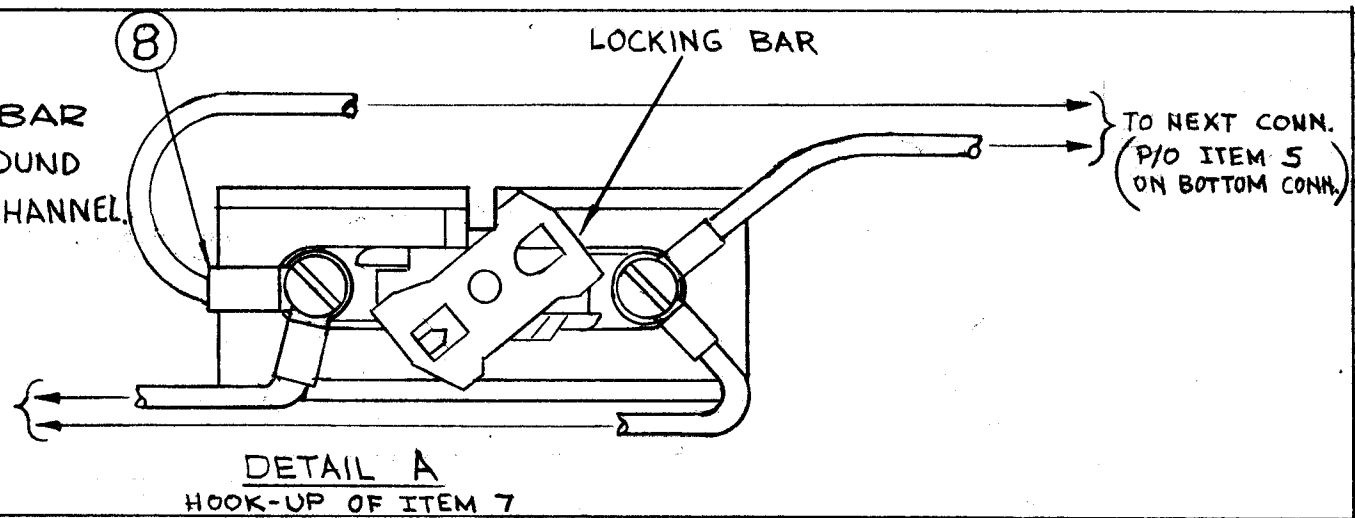
B

REVISIONS

SYM	DESCRIPTION	DATE	E.M.N. NO.	DRAFT	CHKD	APPD
XI	ITEM 5 WAS CA-795-1; DIM 3 1/8 WAS 3 3/8	6-4-64				
Ø	ORIGINAL RELEASE FOR PRODUCTION	6-8-64				
A	ON B/M, IT. 4 WAS "CU119, CONNECTOR ARMoured CABLE"	10-1-64	12487	2L		
B	IT. 6 (TE-159-3 414) DELE; IT. 8 QTY. WAS 14; 3RD WIRE ADD TO STRIP PICT. WITH "P/O IT. 5" CALLOUT; DETAIL A REVISED TO SHOW DOUBLE WIRES; ON SCHEM: 3RD WIRE TO GND. ADDED; AX423 ADD. TO P/N.	3-29-65	13109	2L		

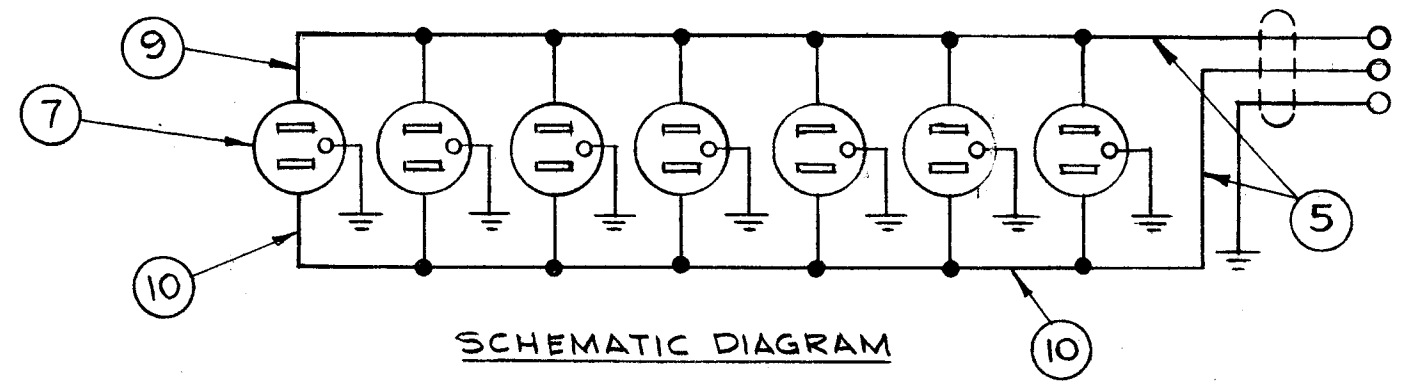


NOTE:
ROTATE LOCKING BAR
TO COMPLETE GROUND
CIRCUIT TO STRIP CHANNEL.



REF: AX-423

REQ'D.	ITEM	PART NUMBER	DESCRIPTION	SYMBOL
1	18	PO-163 - 3.375	COVER, CONNECTOR, STRIP	
1	17	- 4.250		
1	16	- 9.500		
1	15	- 4.500		
1	14	- 6.000		
1	13	- 9.000		
1	12	- 5.375		
1	11	PO-163 - 1.000	COVER, CONNECTOR, STRIP	
X	10	MWC 12(19)U0	WIRE, ELECTRICAL, INSULATED	BLK
X	9	MWC 12(19)U9	WIRE, ELECTRICAL, INSULATED	WHT
24	8	TE-155-34168	TERMINAL, LUG, CRIMP, INSULATED	
7	7	JJ-294-1	RECEPTACLE, GROUNDING	
	6	DELETED		
1	5	CA-795-1	CABLE ASSEMBLY	
1	4	CU-110	BOX CONNECTOR, ELECTRICAL	
1	3	PO-161	FITTING, END, BEANK	
1	2	PO-162	FITTING, END, CABLE ENTRY	
1	1	MS-3435	CHANNEL, STRIP, A.C.	



L. JOHNSON LIST OF MATERIAL

MATERIAL _____

FINISH _____

UNLESS OTHERWISE SPECIFIED
DIMENSIONS ARE IN INCHES AND INCLUDE
CHEMICALLY APPLIED OR PLATED FINISHES

DECIMALS: .X ± .05, .XX ± .01, .XXX ± .005
FRACTIONS: ± 1/64, ± 0° 30'

TOLERANCES

THE TECHNICAL MATERIEL CORP.
MAMARONECK, NEW YORK

TITLE: AX423 STRIP ASSEMBLY, A.C. POWER, RAK-31A

DRAWN: JNY, DATE: 10-21-63, FINAL APPROVAL: [Signature], DATE: [Blank]

CHECKED: [Signature], DATE: 4-23-64

ELECT. DES. [Signature], DATE: 4-23-64

MECH. DES. [Signature], DATE: 4-23-64

A 3205 B

SHEET [Blank] REV. LTR. [Blank]

1	RAK-31A	ASS'Y. NO.
Q'TY./UNIT	MODEL USED ON	
SCALE: NONE	CODE: A	2AX 423

THE CONTENTS OF THIS DRAWING ARE THE EXCLUSIVE PROPERTY OF THE TECHNICAL MATERIEL CORP. ITS UNAUTHORIZED USE OR REPRODUCTION IN WHOLE OR IN PART IS STRICTLY FORBIDDEN.

NOTES