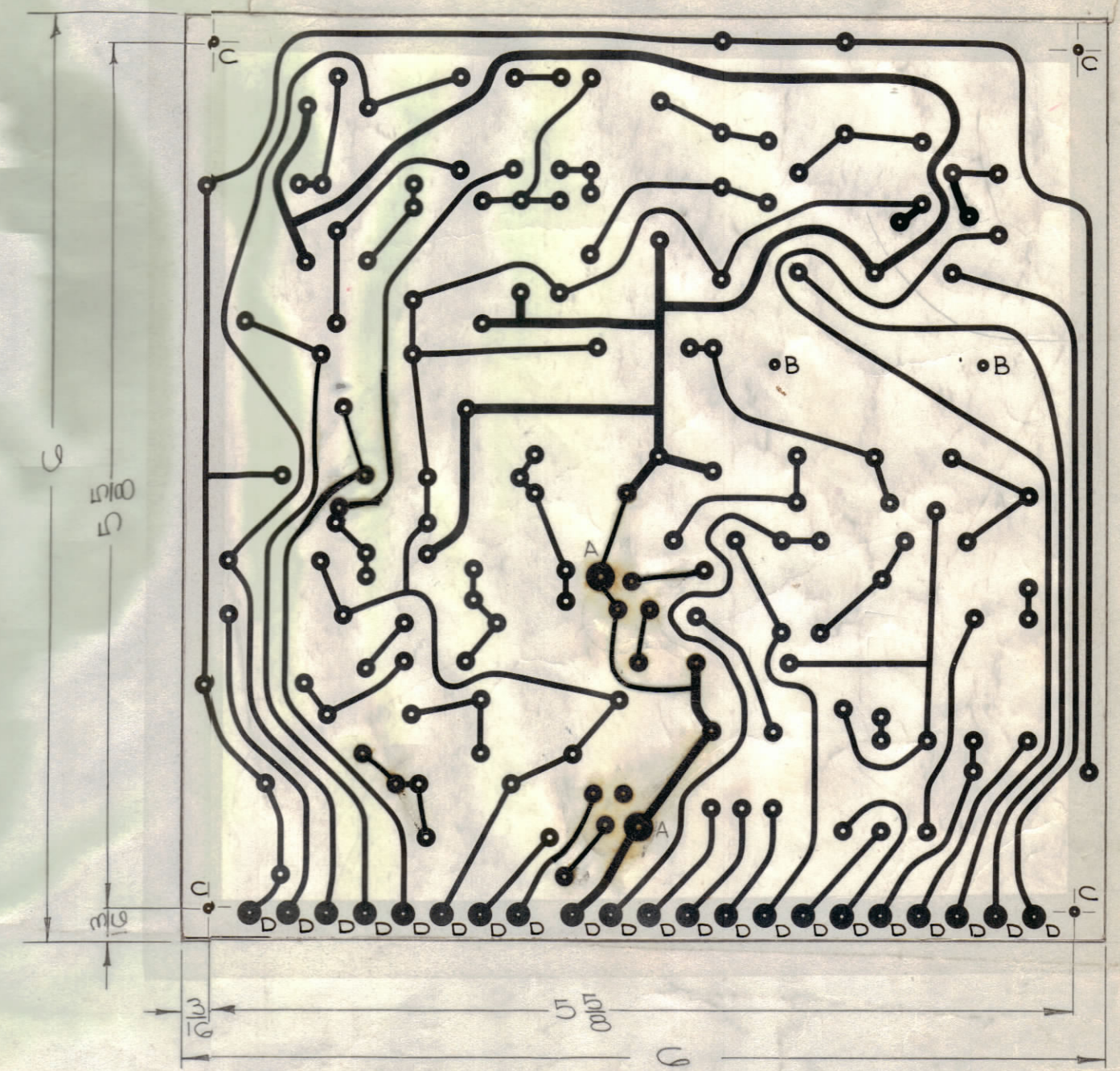


REVISIONS						
ZONE	SYM	DESCRIPTION	DATE	E.M.N. NO.	DRAFT	CHKD
#	A	SEE SHEET 2 OF 2 FOR REVISION	5/5/64	11326	A.M.	4/15/18
	B	UNMARKED HOLES WAS 137 EQ'D; A HOLE WAS .250 - 500	5/22/64	11442	TR	4/15/18
-	C	SEE SHEET 2 OF 2 REV "C"	9/29/64	12338	JB	4/15/18
-	D	SEE SHEET 2 OF 2 REV "D"	10/8/64	12508	JB	4/15/18
	E	ON -A-3221-1 & -2, ARTWORK REVISED; SEE SHEET 2 OF 2 REV "E"	12-8-64	13053	RT	4/15/18
	F	SEE SHEET 2 OF 2 REV. "F"	3-15-65	13699	RT	4/15/18
	G	SEE SHEET 2 OF 2 REV. "G"	4-20-65	13882	RT	4/15/18



ORIGINAL ARTWORK TO BE REMOVED FROM PROTECTIVE POCKET WHEN PHOTOGRAPHING.

— A-3221-1 ETCHING —



— A-3221-2 MACHINING —

FINISHED HOLE & PAD SPECIFICATIONS				
HOLE	HOLE DIA	PAD DIA	QUANTITY REQ	PLATED THRU
UNMARKED	.050	.120	147	YES
A	.088	.160	2	YES
B	1/8	NONE	2	NO
C	3/32	NONE	4	NO
D	.078 ^{+0.002} _{-.000}	.160	21	YES

- ~ SPECIFICATIONS ~
- BASE MATERIAL — EPOXY G-10 3/32 THICK
 - FINISH — SEAL ALL EDGES
 - COPPER FOIL — .0027 MIN. THICKNESS (2 oz)
 - PLATING — TIN LEAD, ALL CONDUCTORS MIN. THICKNESS .0008

- ~ NOTES ~
- LETTER DESIGNATIONS SHOWN ON CIRCUIT DENOTE HOLE SIZE - DO NOT PRINT -
 - HOLES AS NOTED ON CHART ARE TO BE PLATED THRU. ALL PLATED THRU HOLES MUST HAVE A MINIMUM COPPER THICKNESS OF .0015 AT ANY POINT WITHIN THE HOLE.
 - SOLDER PLATING TO BE AS PER TMC SPEC. S-73B.

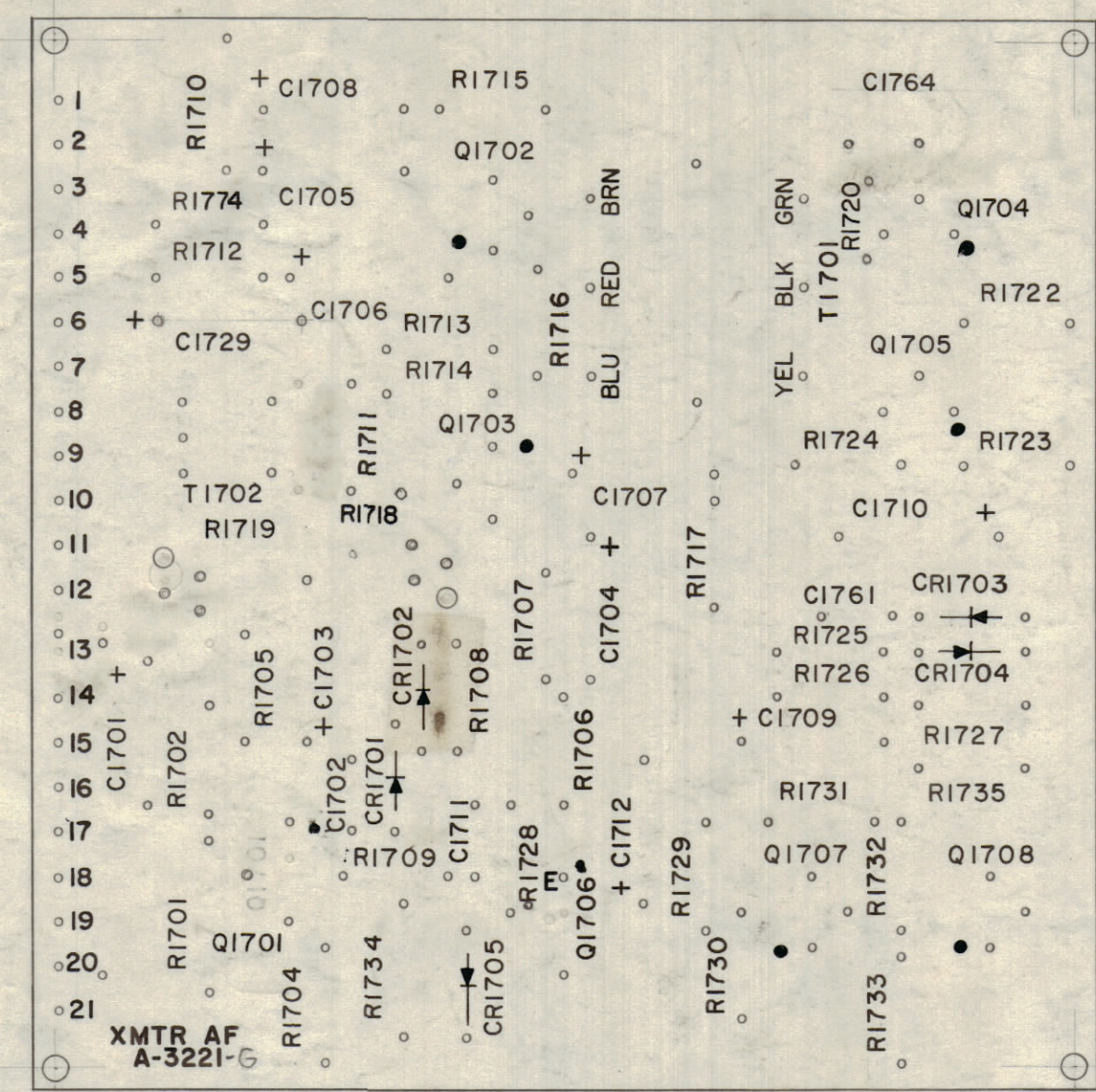
THE ORIGINAL ARTWORK TO BE SUPPLIED BY TMC FOR PHOTOGRAPHING (SCALE 1:1) (TEM-13)

QTY/UNIT	MODEL USED ON	ASSY. NO.
1	STE-1	A3753
1	SME-1	A3770
1	TTR-10	A2785

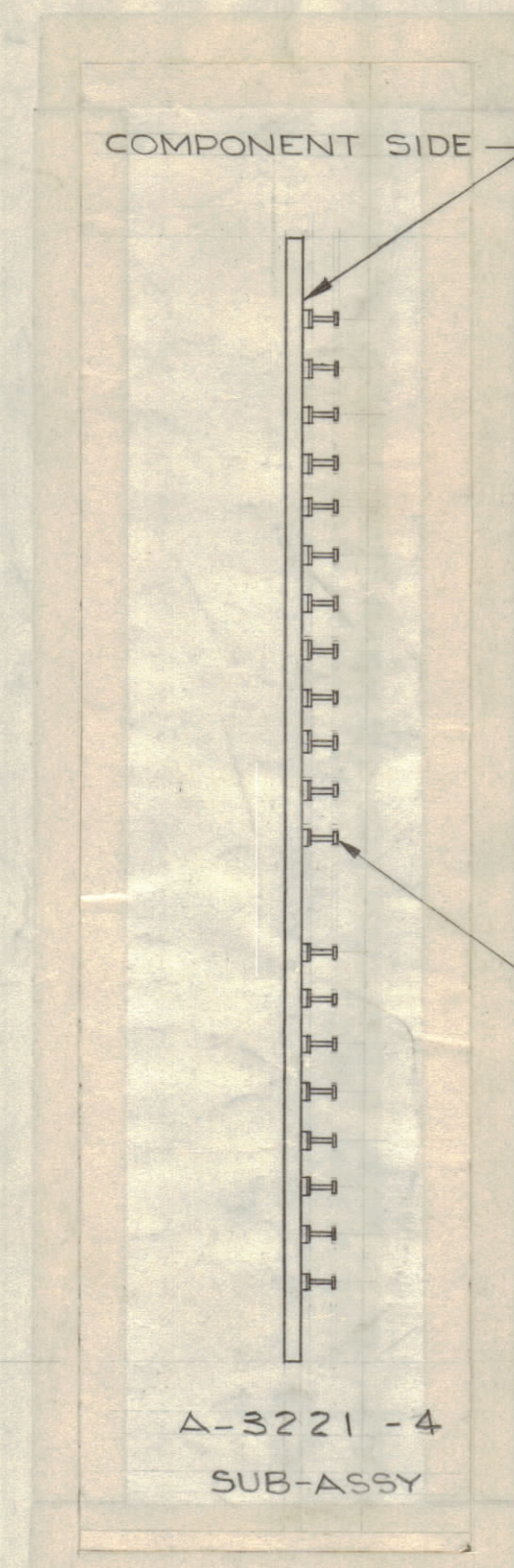
REQ'D.	ITEM	PART NUMBER	DESCRIPTION	SYMBOL
KOHN LIST OF MATERIAL E3037-				
MATERIAL		THE TECHNICAL MATERIEL CORP. MAMARONECK, NEW YORK		
SEE NOTES		TITLE PRINTED CIRCUIT BOARD ASSY TRANSMITTER A.F.		
FINISH		DRAWN [Signature] DATE 9/30/63		
SEE NOTES		CHECKED [Signature] DATE 2/16/64		
UNLESS OTHERWISE SPECIFIED DIMENSIONS ARE IN INCHES AND INCLUDE CHEMICALLY APPLIED OR PLATED FINISHES		ELECT. DES. DATE 2/16/64		
DECIMALS .X ± .05 .XX ± .01 .XXX ± .005		MECH. DES. DATE [Signature]		
FRACTIONS ± 1/64 ANGLES ± 0° 30'		SHEET 1002		
TOLERANCES		REV. LTR. G		

NOTES THE CONTENTS OF THIS DRAWING ARE THE EXCLUSIVE PROPERTY OF THE TECHNICAL MATERIEL CORP. ITS UNAUTHORIZED USE OR REPRODUCTION IN WHOLE OR IN PART IS STRICTLY FORBIDDEN.

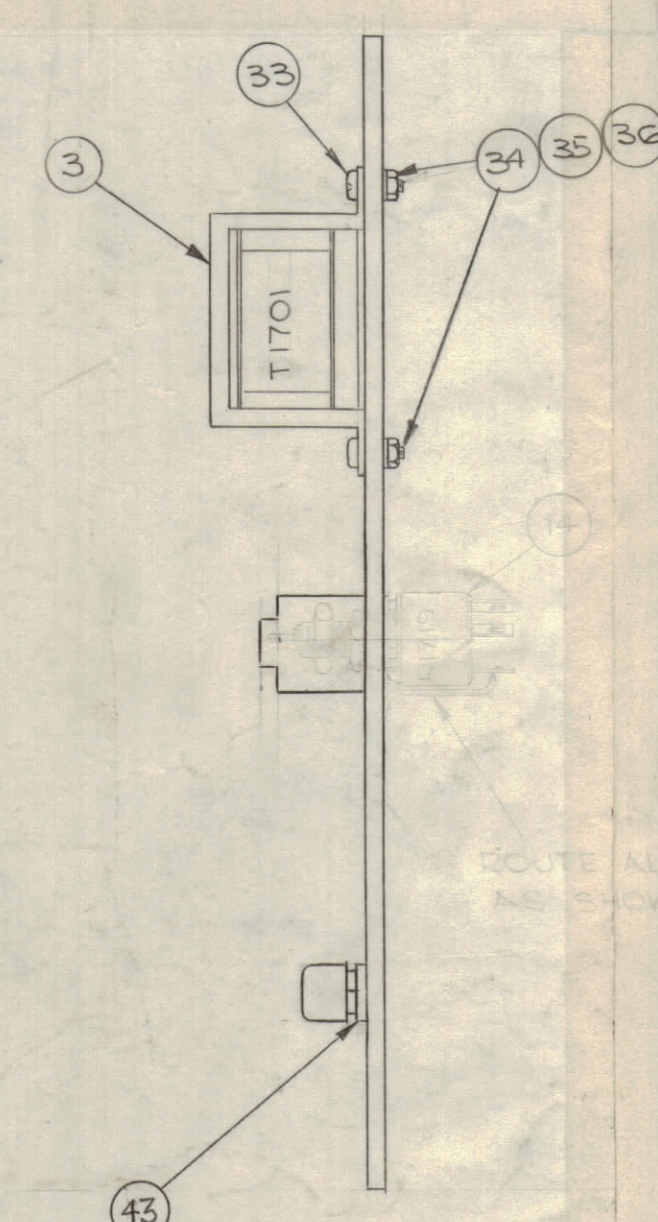
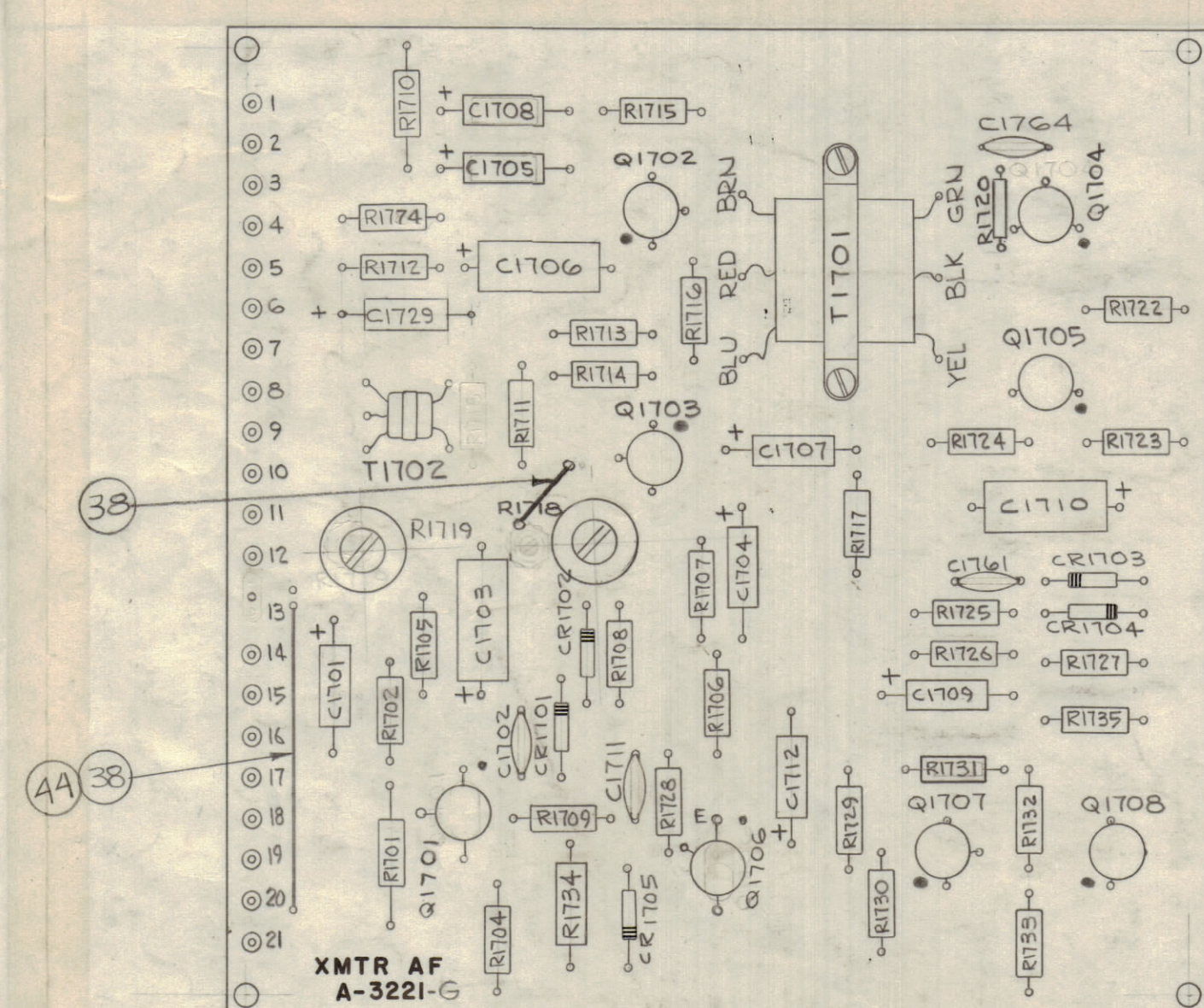
REVISIONS						
ZONE	SYM	DESCRIPTION	DATE	E.M.N. NO.	DRAFT	CHKD
4	A	ITEM 21 DELETED & ADDED TO ITEM 20	5/5/64	11326	AM	
	B	ITEM 6 WAS 2N213A. " 8 WAS 2N214. ITEMS 14 & 32 WERE RV1061X88. DELETED ITEMS 39 THRU 41	5/21/64	11442	TR.	
63	C	IT. 6 WAS 1 REQ & SYM. Q1701 ADD. IT. 8 2N1308 DELE. IT. 31 SYM. WAS R1754	9/23/64	12338	HRB	
63, 63	D	IT. 33 WAS SCBP0440BN4	10.8.64	12508	HRB	
62	E	IT. 14 WAS RVIII U503A, ITEM 32 ADDED TO R1717 ON 81M01T(4) W/ALC "TRANSFORMER" IT. 17 WAS "2N1370-4" IT. 43 ADD; ON ELECTRICAL ASSY IT. 43 & CALLOUT ADD. ON A3221-3, 4-5, "R1706" BASE HOLES RELOC.	12-8-64	13053	HRB	
	F	IT. 44 ADD; W/D UPDATED.	3-15-65	13699	HRB	
	G	IT. 30 WAS CE105-75-15.	4-22-65	13882	HRB	



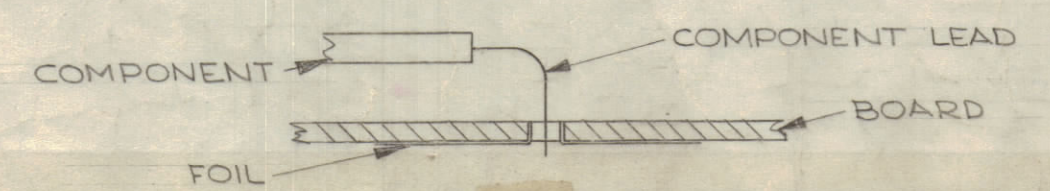
~UNLESS OTHERWISE SPECIFIED~
 A-3221-3 LETTERING
 1. ALL LETTERING TO BE 3/32 HIGH WHITE GOTHIC
 2. MARKING PROCESS: PER TMC SPEC §27. LOCATE AS SHOWN.



QTY	UNIT	MODEL USED ON	ASSY. NO.
2	44	PX104-1-022	SLEEVING, INSULATION SZ24 BLK.
8	43	PX829-1	PAD, MOUNTING, TRANSISTOR
1	42	RC20GF155J	RESISTOR, FIXED, COMP. R1720
	41		
	40		
	39		
0-05	38	WL-100-8	WIRE, BUSS, SIZE 24
X	37	BS-100	SOLDER, SOFT
2	36	NTH0440BN8	NUT, HEX
2	35	LWEO4MRN	WASHER, LOCK, EXT
2	34	FWO4HBN	WASHER, FLAT
2	33	SCBP0440BN5	SCREW, MACHINE
1	32	RVIIIU501A	RESISTOR, VARIABLE, COMP R1718
1	31	RC20GF101J	RESISTOR, FIXED, COMP R1774
1	30	CE-105-20-15	CAPACITOR, FIXED, ELECTROLYTIC C1712
1	29	RC32GF330J	RESISTOR, FIXED, COMP R1734
1	28	RC20GF221J	RESISTOR, FIXED, COMP R1712
	27	102J	
	26	222J	
	25	332J	
	24	392J	
	23	472J	
	22	562J	
	21		
	20	822J	
	19	103J	
	18	223J	
	17	683J	
	16	104J	
	15	RC20GF154J	RESISTOR, FIXED, COMP R1723, 1733, 1735
	14	RVIIIU254A	RESISTOR, VARIABLE, COMP R1719
	13	CE-105-6-15	CAPACITOR, FIXED, ELECTROLYTIC
	12	CE-105-50-15	
	11	CE-105-10-15	
	10	CE-105-4-15	CAPACITOR, FIXED, ELECTROLYTIC C1708
	9	CC-100-33	CAPACITOR, FIXED, CERAMIC, DISC C1702, 1711, 1761, 1764
	8		
	7	TX107	TRANSISTOR Q1702, 1703, 1704, 1705, 1707
	6	TX106	TRANSISTOR Q1701, Q1706
	5	2N2001	TRANSISTOR Q1708
	4	IN34A	SEMICON DEVICE, DIODE
	3	TF-267-4	TRANSFORMER, AUDIO T1701
	2	TF-246-17Z	TRANSFORMER, AUDIO T1702
	1	TE-127-3	TERMINAL, STUD



~ASSEMBLY NOTICE~
 1. TO MOUNT COMPONENTS, INSERT LEAD THROUGH PLATED THRU HOLES AND BEND ABOUT 1/16 OF LEAD OVER COPPER FOIL AS SHOWN.
 2. APPLY HEAT AND SOLDER TO LEAD AND FOIL ~CAUTION~ TOO MUCH HEAT WILL CAUSE FOIL TO SEPARATE FROM THE BOARD.
 3. SOLDER AND INSPECT AS PER §67G.



NOTES

QTY	UNIT	MODEL USED ON	ASSY. NO.
1		STE-1	A3753
1		SME-1	A3770
1		TTR-10	A-2785

REO'D.	ITEM	PART NUMBER	DESCRIPTION	SYMBOL
KOHJ LIST OF MATERIAL E-3037-86				
MATERIAL				
FINISH				
SCALE DO NOT SCALE				
CHECKED				
DATE				
ELECT. DES.				
MECH. DES.				
DATE				
SHEET 2 OF 2				

THE TECHNICAL MATERIEL CORP.
 MAMARONECK, NEW YORK
 TITLE: PRINTED CIRCUIT BOARD ASSY
 TRANSMITTER A.F.
 DRAWN: [Signature] DATE: 6/3/63
 CHECKED: [Signature] DATE: 10/14/63
 DATE: 10/16/63
 A-3221
 REV. LTR.