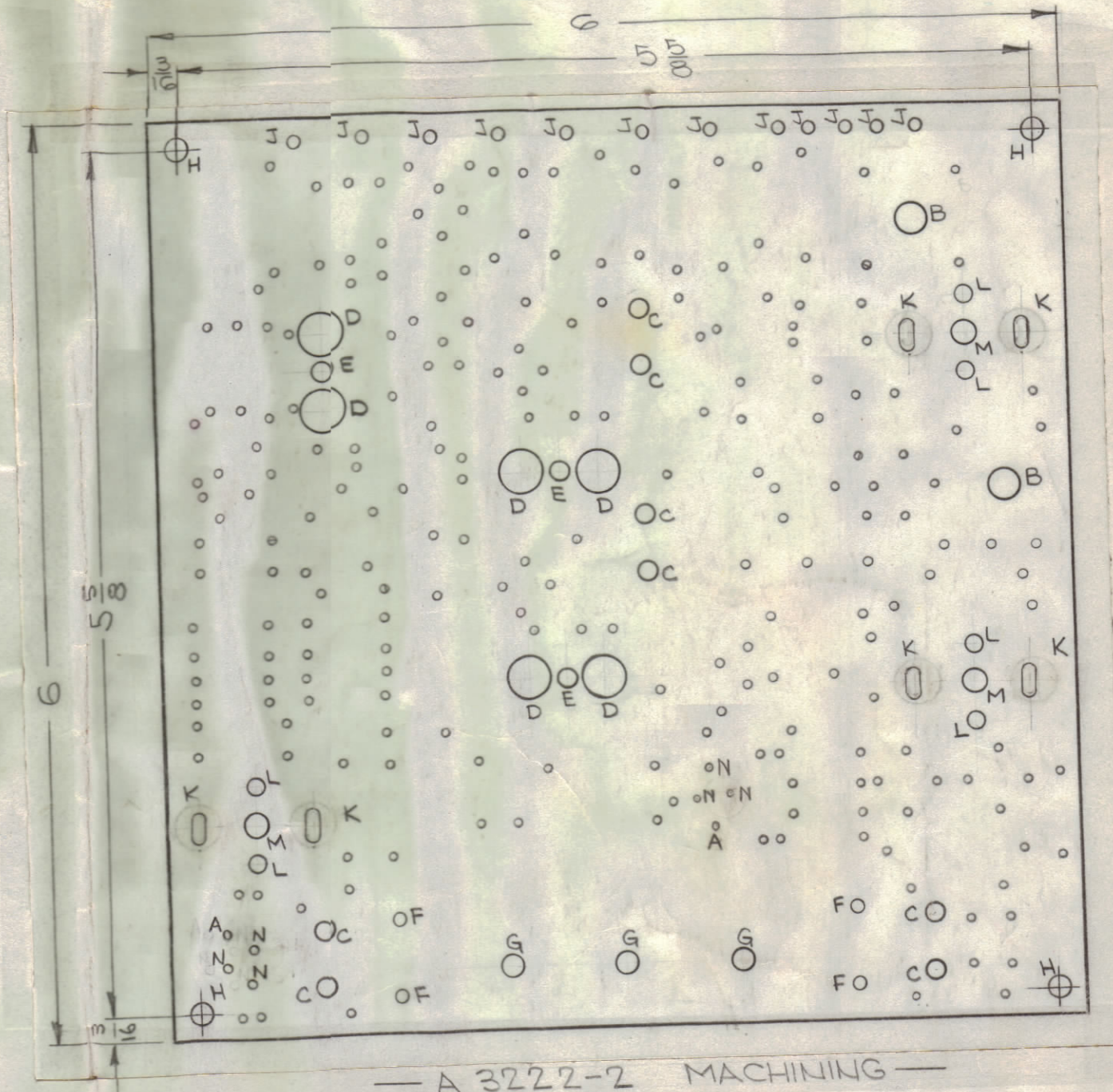
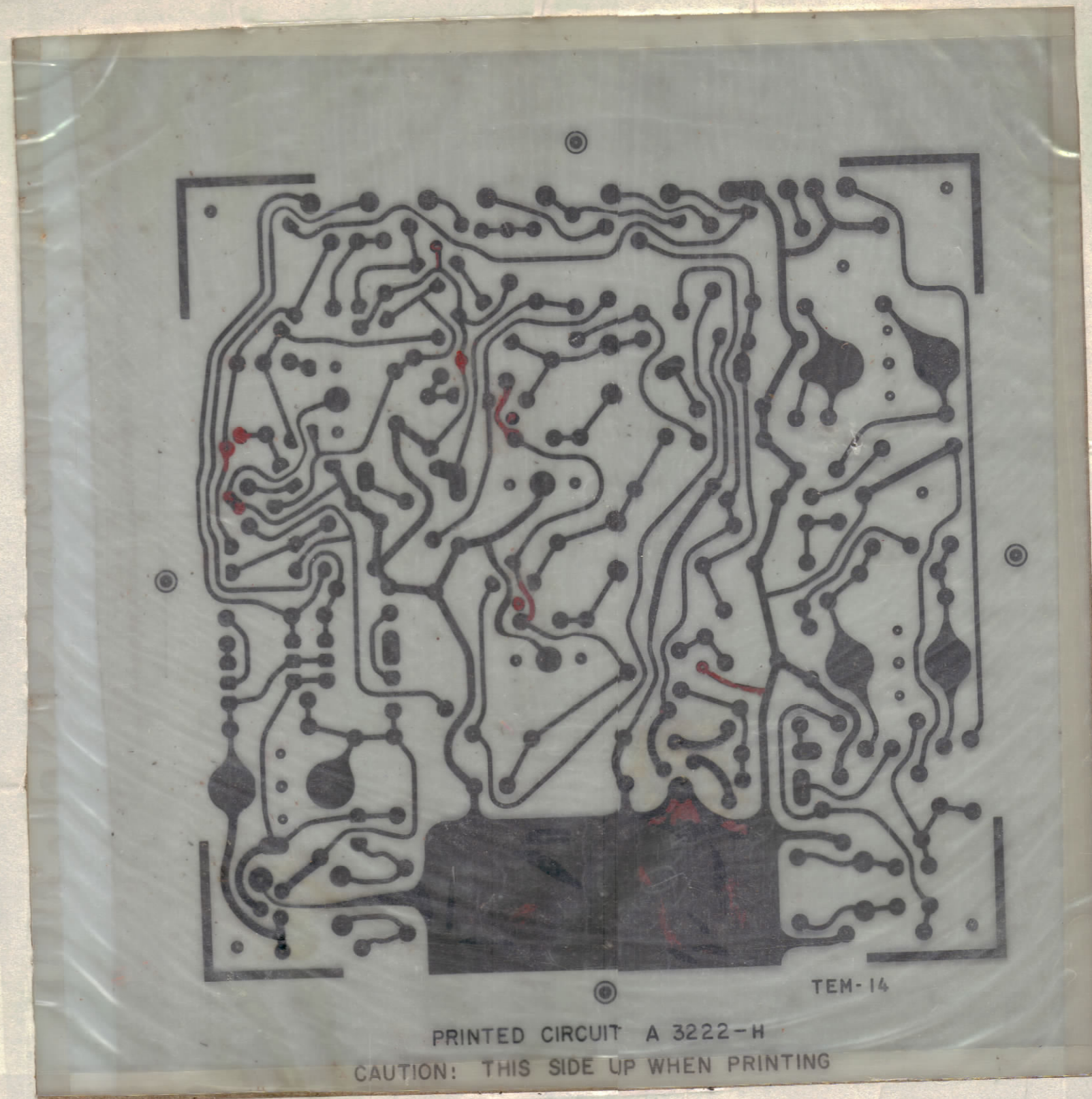


REVISIONS							
ZONE	SYM	DESCRIPTION	DATE	E.M.N. NO.	DRAFT	CHKD.	APPD.
-	A	K WAS .281 HOLE	4/29/64	11327	A.M.	@	JHC
7A1	B	A" HOLE REV; "N" HOLE ADDED, UNMARKED HOLE WAS 227	5-22-64	11442	NP	@	JHC
-	C	ART WORK MODIFIED, R1742 HOLE GROUPING RELOC.	8.15.64	11464	WFB	@	JHC
-	D	SEE SHEET 2 OF 2 REV. "D"	9.29.64	12335	WFB	@	JHC
-	E	SEE SHEET 2 OF 2 REV. "E"	10.27.64	12719	WFB	@	JHC
-	F	ART WORK MODIFIED, R1742 HOLE GROUPING RELOC.	12-21-64	13076	HLA	@	JHC
-	G	SEE SHEET 2 OF 2 REV. "G"	3-15-65	13699	RF	@	JHC
-	H	SEE SHEET 2 OF 2	3-22-67	18020	L.A.K.	@	JHC



ORIGINAL ARTWORK TO BE REMOVED FROM PROTECTIVE POCKET WHEN PHOTOGRAPHING

— A 3222-1 ETCHING —

~SPECIFICATIONS~  
 BASE MATERIAL — EPOXY G-10, 3/32 THICK  
 FINISH — SEAL ALL EDGES  
 COPPER FOIL — .0027 MIN. THICKNESS (2 oz.)  
 PLATING — TIN LEAD ALL CONDUCTORS  
 MIN. THICKNESS .0008

~NOTES~  
 1. LETTER DESIGNATIONS SHOWN ON CIRCUIT DENOTE HOLE SIZE — DO NOT PRINT—  
 2. HOLES AS NOTED ON CHART ARE TO BE PLATED THRU. ALL PLATED THRU HOLES MUST HAVE A MINIMUM COPPER THICKNESS OF .0018 AT ANY POINT WITHIN THE HOLE.  
 3. SOLDER PLATING AS PER TMC SPEC. S-735

FINISHED HOLE & PAD SPECIFICATIONS				
HOLE LETTER	HOLE DIA	PAD DIA	QUANTITY REQ	PLATED THRU
UNMARKED	.050	.120	227	YES
A	.089	.172	2	YES
B	.191	NONE	2	NO
C	.104	.166	8	YES
D	17/64	NONE	6	NO
E	.116	.194	3	YES
F	.062	.120	4	YES
G	.116	AS SHOWN	3	NO
H	5/32	NONE	4	NO
J	.078 ± .002	.160	12	YES
K	3/32 X 5/16	AS SHOWN	6	NO
L	.096	NONE	6	NO
M	.140	NONE	3	NO
N	.034	.120	6	YES

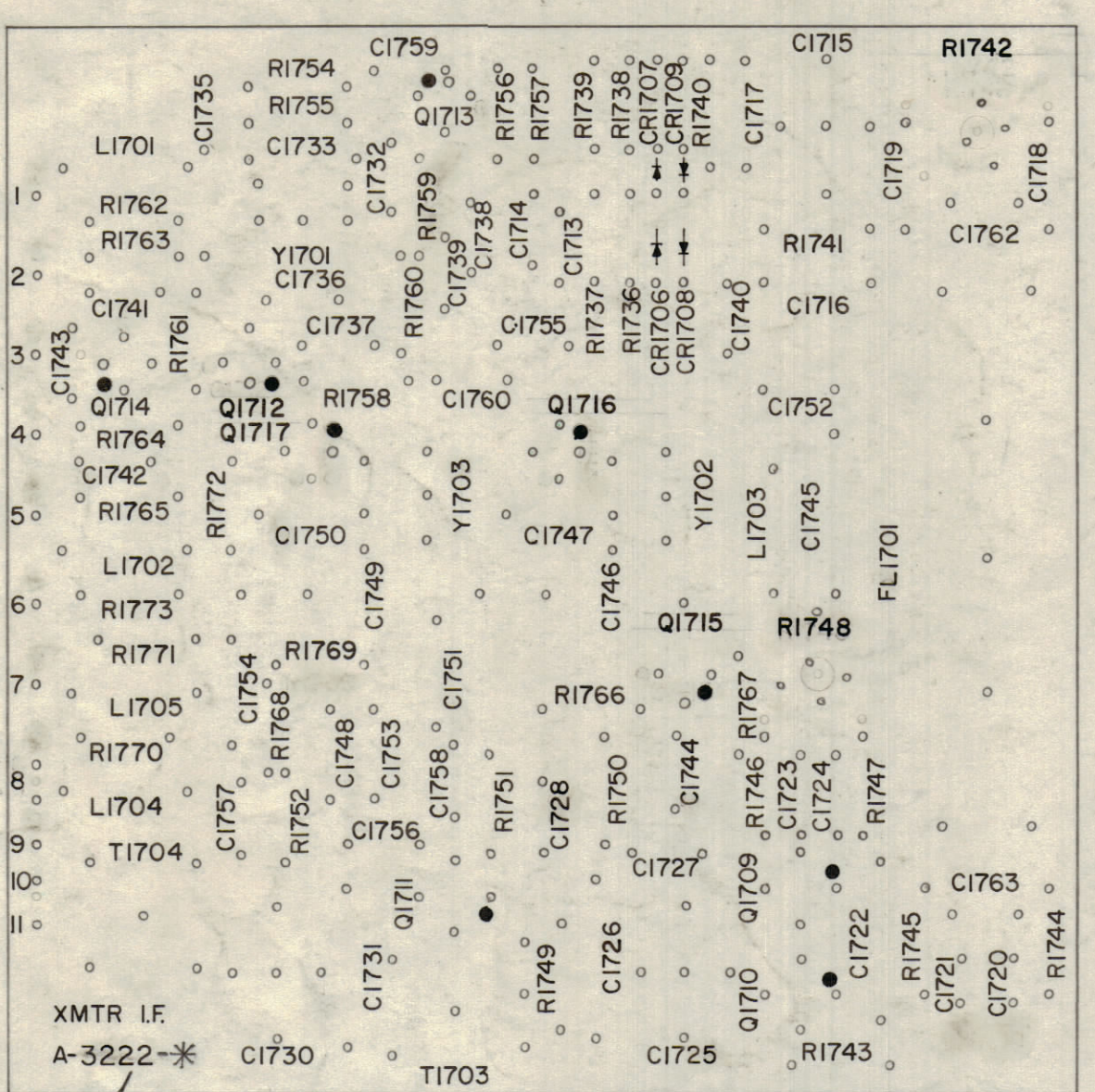
REQ'D.	ITEM	PART NUMBER	DESCRIPTION	SYMBOL
KOHN LIST OF MATERIAL E3037-				
MATERIAL		THE TECHNICAL MATERIEL CORP. MAMARONECK, NEW YORK		
SEE NOTES		TITLE PRINTED CIRCUIT BOARD ASSY TRANSMITTER I.F.		
FINISH		DRAWN DATE CHECKED DATE ELECT. DES. DATE MECH. DES. DATE		
SEE NOTES		UNLESS OTHERWISE SPECIFIED DIMENSIONS ARE IN INCHES AND INCLUDE CHEMICALLY APPLIED OR PLATED FINISHES		
SCALE 1:1		TOLERANCES DECIMALS X ± .05 .XX ± .01 .XXX ± .005		
MODEL USED ON SME-1 STE-1 TTR-10		ASS'Y. NO.		
CODE A		DATE 2/27/63 2/16/64 2/16/64		
THE CONTENTS OF THIS DRAWING ARE THE EXCLUSIVE PROPERTY OF THE TECHNICAL MATERIEL CORP. ITS UNAUTHORIZED USE OR REPRODUCTION IN WHOLE OR IN PART IS STRICTLY FORBIDDEN.		FINAL APPROVAL DATE A 3222 SHEET 1 OF 2		

NOTES

FOR SHEET 2 SEE 8 SIZE

A 3222 H

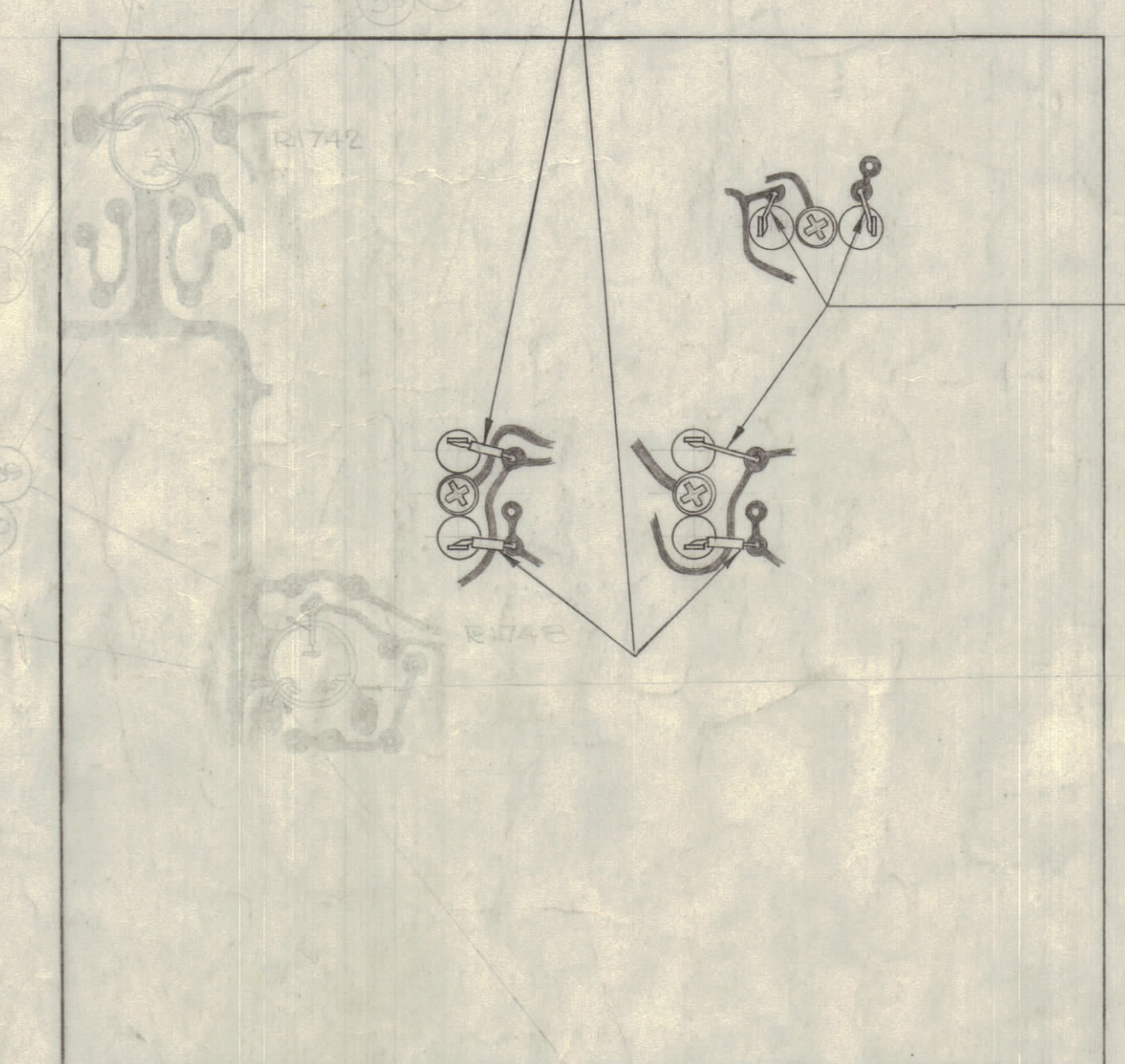
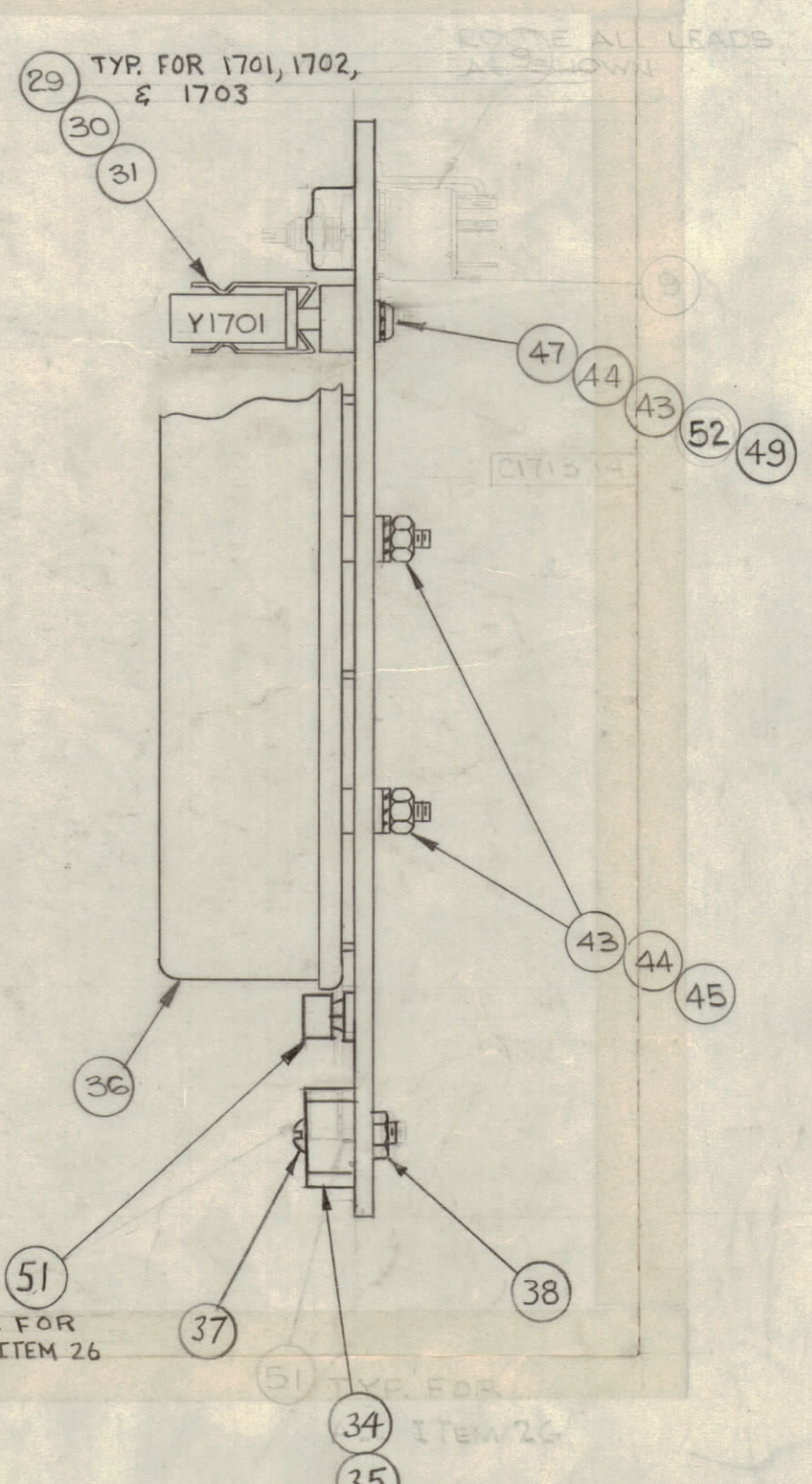
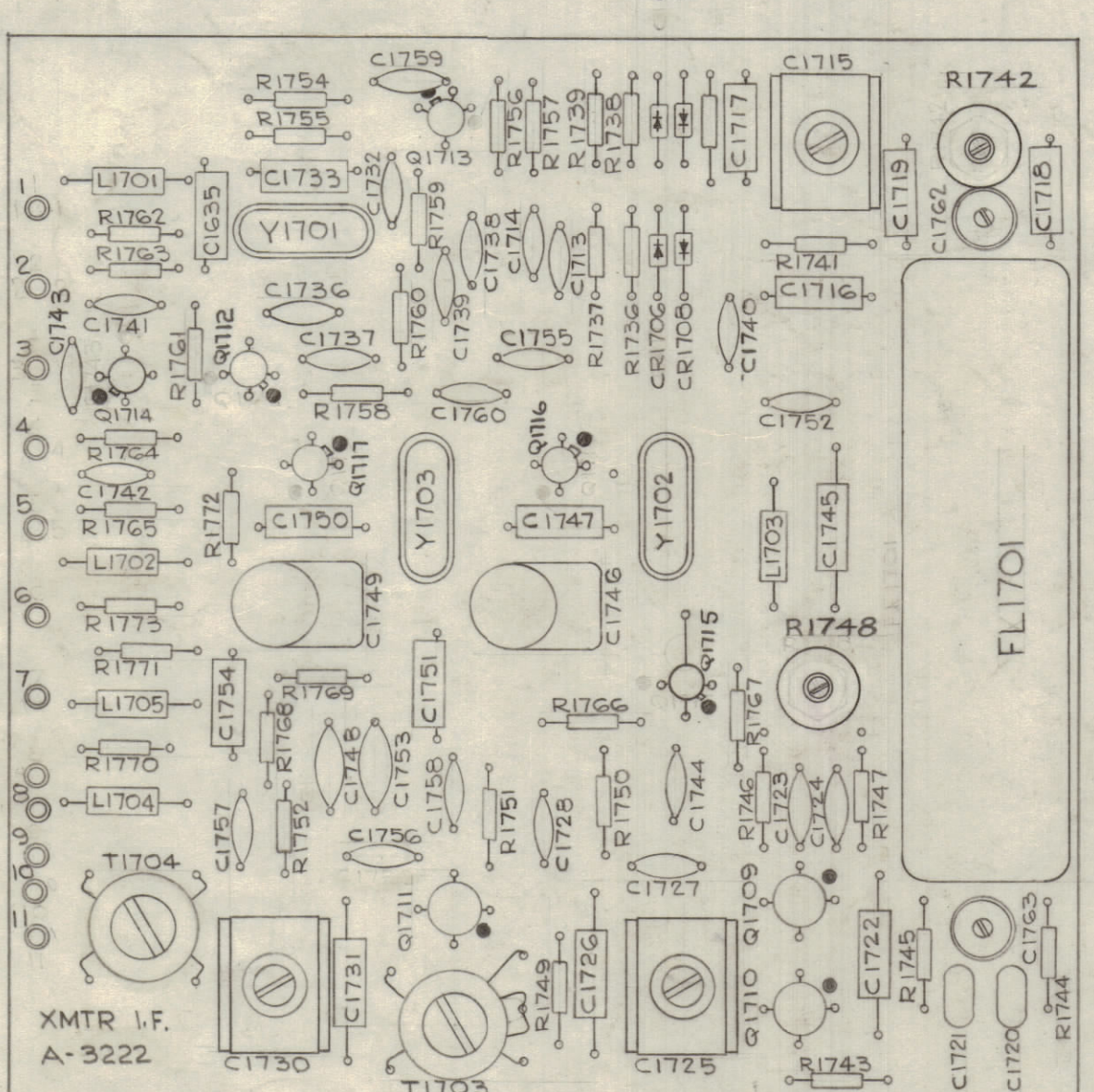
REVISIONS						
ZONE	SYM	DESCRIPTION	DATE	EM. NO.	DRAFT	CHKD
A	SEE SHEET 1 OF 2 FOR REVISION		4/24/64	11327	A.M.	
B	ITEM 9 REV, LETTERING REV.		5-22-64	11442	N.P.	
C	IT-21 WAS CM15B300J, IT-29 WAS TS 104-1, IT-30 WAS CU149-1, IT-31 WAS CR47U-250P, IT-32, W/CR27U-2 000P, IT-33 W/4500P, IT-40, 41, 42, PX 104-2, -3, -4 DELE. IT-43 WAS SRR, IT-45 W/BNG, IT-49 ADD., ON A 3222-3. Q1726 WAS C1736, C1747 WAS Q1747		8.15.64	11464	W.B.	
D	IT-21 WAS CM15B470J, IT-32 & IT-33 WERE CR27U ON A 3222-5. FILL-OUT #3 ADDED		9.29.64	12335	W.B.	
E	ON IT-18 SYMB C1733 DELETED, IT-50 ADDED		10-21-64	12713	W.B.	
F	UPDATED B/M & ADDED IT-51, 52; RELOC. LETTERING R1742; ADDED NOTE "MARK AS SHOWN ETC."		12-21-64	13016	H.L.A.	
G	IT 17, 19, 20, 21, 22 & 50 WERE "CHXXB"; IT 23 WAS CM100-10; IT 31, 32, & 33 WERE "CRXX/U"; COMPONENT ASSY. REVISED; J10 UPDATED.		3-15-65	13649	J.L.	
H	ADDED 03 TO ITEMS 17 THRU 20, 22 & 50. ITEM #24 WAS "D", ITEM 13 "F" WAS "E"		3-22-65	15020	L.A.K.	



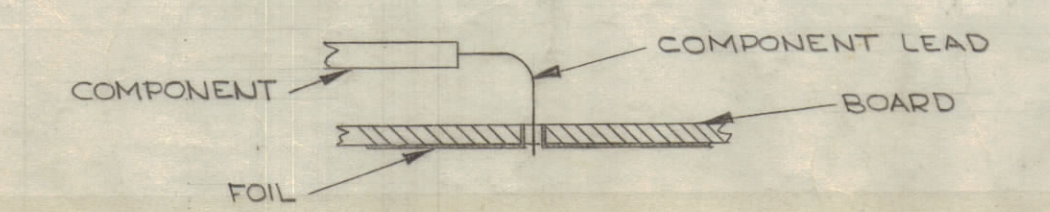
~UNLESS OTHERWISE SPECIFIED~  
 1. ALL LETTERING TO BE 3/32 HIGH WHITE GOTHIC.  
 2. MARKING PROCESS: PER TMC SPEC. S-727. LOCATE AS SHOWN.



3	52	NTH0440BN6	NUT, HEX		
9	51	PX 829-1	PADS, TRANSISTOR		
1	50	CM15C470J03	CAPACITOR, FIXED, MICA		C1733
3	49	WA-109-17	WASHER, FIBER		
0-02	48	PX-370-15-7	INS. SLEEVING, TEFLON		
3	47	SCBP0440BJ7	SCREW, MACHINE		
X	46	BS 100	SOLDER, SOFT		
2	45	NTH0440BN8	NUT, HEX		
5	44	LWEO4MRN	WASHER, LOCK, EXT		
5	43	FWO4HBN	WASHER, FLAT		
	42				
	41				
	40				
0-10	39	WL100-8	WIRE, BUSS		
2	38	SC 143-1032B8	SCREW, NYLON		
2	37	NT-137-1032	NUT, NYLON		
1	36	FX 195-1	FILTER, B.P., MECHANICAL		FL1701
1	35	TZ 125	TRANSFORMER, R.F.		T1704
1	34	TZ 124	TRANSFORMER, R.F.		T1703
1	33	CR18AJU-1.500000MC	CRYSTAL UNIT, QUARTZ		Y1703
1	32	CR18AJU-2.000000MC	CRYSTAL UNIT, QUARTZ		Y1702
1	31	CR47AJU-250.000KC	CRYSTAL UNIT, QUARTZ		Y1701
3	30	FP-109	RETAINER, CRYSTAL HOLDER		
*	29	TS 104-2	SOCKET, CRYSTAL		
5	28	CL 140-6	COIL, R.F., FIXED		
4	27	IN34A	SEMICON DEVICE, DIODE		
9	26	2N2084	TRANSISTOR		
7	25				
2	24	CM 111F181G55	CAPACITOR, FIXED, MICA		C1780, C1781
2	23	CM100-10			C1726, C1750, C1751
2	22	CM20F102G03			C1745, C1746, C1747, C1750
2	21	CM15C240J			C1715, C1716, C1717
3	20	CM15F271J03			C1716, C1717
2	19	CM15F181J03			C1716, C1717
1	18	CM15F101J03			C1716, C1717
1	17	CM15F161J03	CAPACITOR, FIXED, MICA		C1716
12	16	CC 100-2B	CAPACITOR, FIXED, CERAMIC, DISC		
4	15	CC 100-1G	CAPACITOR, FIXED, CERAMIC, DISC		
8	14	CC 100-33	CAPACITOR, FIXED, CERAMIC, DISC		
1	13	CM 112F 512F35	CAPACITOR, FIXED, MICA		C1736
3	12	CV 114-1	CAPACITOR, VARIABLE, MICA		
2	11	CV 109-6	CAPACITOR, VARIABLE, CERAMIC		C1746, C1748
2	10	CV 112-2	CAPACITOR, VARIABLE, CERAMIC		C1762, C1763, C1764, R1742, R1748
2	9	RV111U103A	RESISTOR, VARIABLE, COMP		
6	8	RC20GF103J	RESISTOR, FIXED, COMP		
1	7	303			R1743
7	6	472			
1	5	332			R1761
16	4	102			
2	3	331			R1740, R1741, R1753, R1764
2	2	RC20GF220J	RESISTOR, FIXED, COMP		
12	1	TE 127-3	TERMINAL, STUD		



~ASSEMBLY NOTICE~  
 1. TO MOUNT COMPONENTS, INSERT LEAD THROUGH PLATED THRU HOLE AND BEND ABOUT 1/16 OF LEAD OVER FOIL AS SHOWN.  
 2. APPLY HEAT AND SOLDER TO LEAD & FOIL ~CAUTION~ TOO MUCH HEAT WILL CAUSE FOIL TO SEPARATE FROM THE BOARD.  
 3. CLEAN AND INSPECT AS PER S767.



QTY./UNIT	SCALE	DO NOT SCALE	CODE	MODEL USED ON	ASSY. NO.
1			A		A-2785

REO'D.	ITEM	PART NUMBER	DESCRIPTION	SYMBOL
KOHN LIST OF MATERIAL E-3037-87				
MATERIAL				
FINISH				
UNLESS OTHERWISE SPECIFIED DIMENSIONS ARE IN INCHES AND INCLUDE CHEMICALLY APPLIED OR PLATED FINISHES				
DECIMALS	X ± .08	XX ± .01	XXX ± .005	
FRACTIONS	± 1/64	± 1/32	± 1/16	
ANGLES	± 0° 30'			
DRAWN	DATE	DATE	DATE	DATE
MECH. DES.	10/16/63	10/16/63	10/16/63	10/16/63
ELECT. DES.	ROH Kohn	ROH Kohn	ROH Kohn	ROH Kohn
TITLE				DATE
PRINTED CIRCUIT BOARD ASSY TRANSMITTER I.F.				A 3222
MATERIAL				REV. LTR.
THE TECHNICAL MATERIEL CORP. MAMARONECK, NEW YORK				H