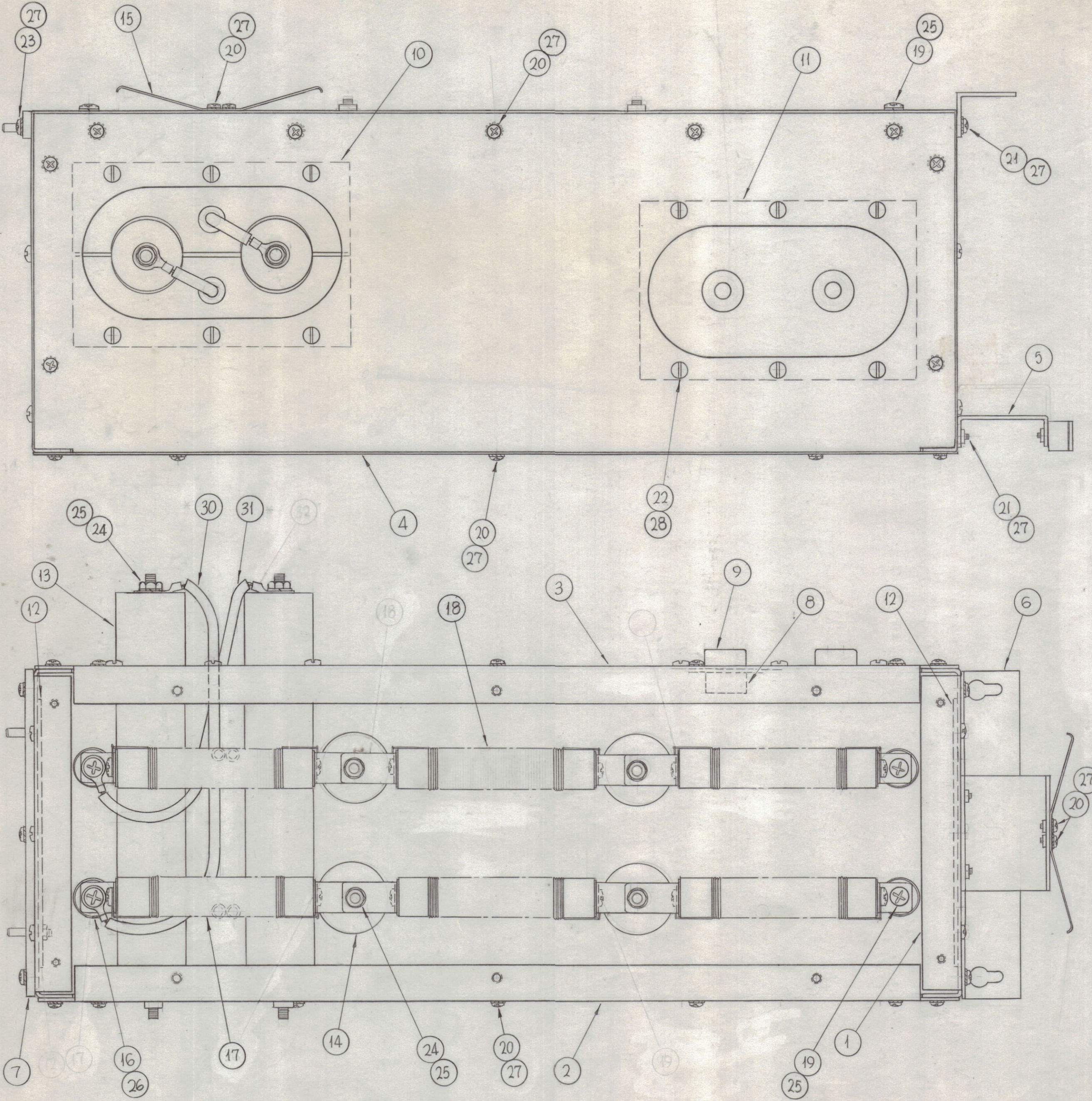


REVISIONS						
ZONE	SYM	DESCRIPTION	DATE	E.M.N. NO.	DRAFT	CHKD
	0	ORIGINAL RELEASE FOR PRODUCTION	5-5-64		SRG	APPD



SHOWN WITH COVER OFF

\* PLEASE BE CAREFUL WHEN ITEM 10  
THAN SOLDER W/CS (ITEM 32)

NOTES

1	GPT-200K	AX-395
Q'TY./UNIT	MODEL USED ON	ASS'Y. NO.
SCALE 1/2"=1"	CODE A	
THE CONTENTS OF THIS DRAWING ARE THE EXCLUSIVE PROPERTY OF THE TECHNICAL MATERIEL CORP. ITS UNAUTHORIZED USE OR REPRODUCTION IN WHOLE OR IN PART IS STRICTLY FORBIDDEN.		

REQ'D.	ITEM	PART NUMBER	DESCRIPTION	SYMBOL
1	31	CA-409-116-11.00	CABLE ASS'Y JUMPER HV	WHITE
1	30	CA-409-131-12.00	CABLE ASS'Y JUMPER HV	PINK
X	29	BS-100	SOLDER, SOFT	
24	28	NT-137-1032	NUT, HEX, NYLON	
42	27	LWE08MRN	LOCKWASHER, EXTERNAL TOOTH	
8	26	WA-109-55	WASHER, FIBER	
14	25	LWS25MRN	LOCKWASHER, SPRING TYPE	
6	24	NTH2520BN14	NUT, HEX	
3	23	SCBP0832BN8	SCREW, MACHINE	
24	22	SC-143-1032B8	SCREW, MACHINE, NYLON	
5	21	SCBP0832BN7	SCREW, MACHINE	
34	20	SCBP0832BN6	SCREW, MACHINE	
8	19	SCBP2520BN8	SCREW, MACHINE	
2	18	CL-338	COIL, R.F. FIXED	
4	17	CL-339	COIL, R.F. FIXED	
4	16	NS3W0440	INSULATOR, STANDOFF, ROUND	
3	15	MS-1658	GROUND STRAP	
4	14	CX-108-3	CAP. FIXED TEFLON	
2	13	CX-108-2	CAP. FIXED TEFLON	
2	12	PX-758	INSULATOR DECOUPLER BOX	
1	11	PX-745	SUPPORT, FEED-THRU	
2	10	PX-744	SUPPORT, CAPACITOR	
2	9	PX-717	SCREW, TEFLON, CABLE FEED THRU	
2	8	PX-716	NUT, TEFLON, CABLE FEED THRU	
1	7	PM-953	BRACKET, DECOUPLER SUPPORT	
1	6	PM-951	BRACKET, DECOUPLER MTG.	
1	5	MS-3672	BRACKET, SPRING SUPPORT	
1	4	MS-3257	COVER, TOP	
1	3	LD-1255 (MS-3256)	PLATE, SIDE, RIGHT	
1	2	MS-3255	PLATE, SIDE, LEFT	
1	1	LD-1254 (MS-3254)	CHASSIS, DECOUPLER	

F. BUDETTI		LIST OF MATERIAL	
MATERIAL		THE TECHNICAL MATERIEL CORP. MAMARONECK, NEW YORK	
FINISH		TITLE DECOUPLER BOX ASS'Y	
UNLESS OTHERWISE SPECIFIED DIMENSIONS ARE IN INCHES AND INCLUDE CHEMICALLY APPLIED OR PLATED FINISHES		DRAWN SRG	DATE 4/16/64
DECIMALS .X ± .05 .XX ± .01 .XXX ± .005		CHECKED aa	DATE
FRACTIONS ± 1/64 ANGLES ± 0° 30'		ELECT. DES. SRG	DATE 1/24/64
TOLERANCES		MECH. DES. SRG	DATE
		SHEET A-3258	
		REV. LTR. 0	

A-3258 0