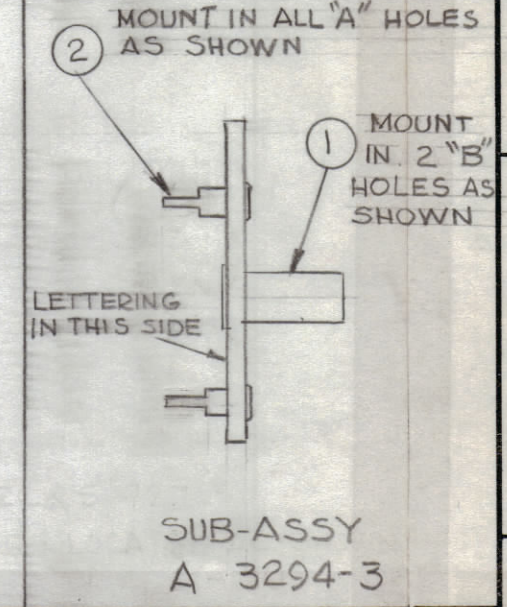
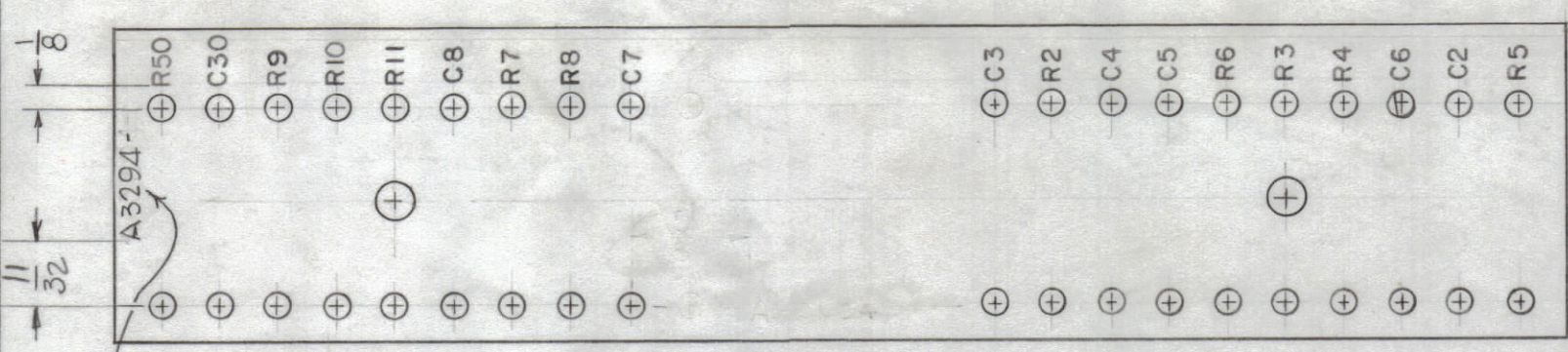


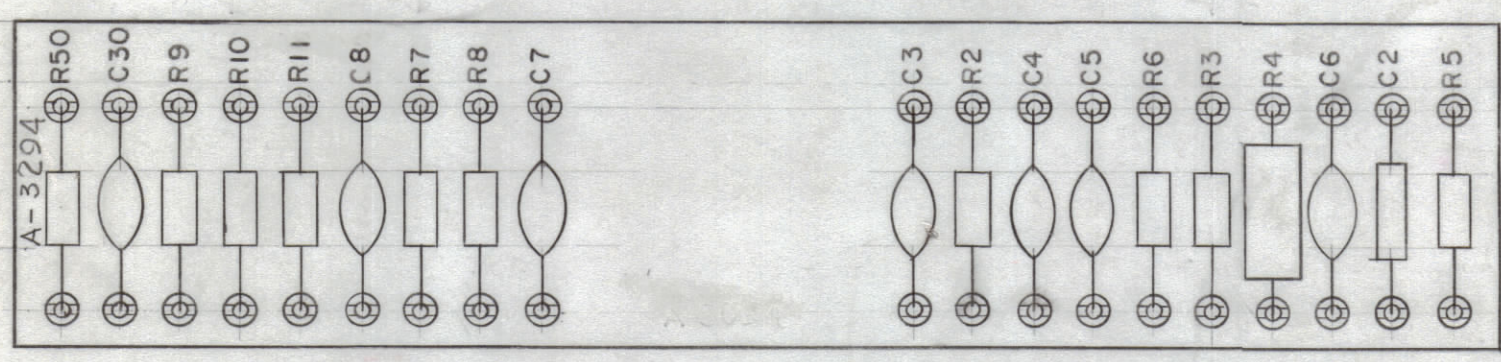
MARKING PROCESS: AS PER TMC SPECIFICATION S-727.
 LETTERING: 3/32 HIGH BLACK GOTHIC, LOCATED AS SHOWN.

REVISIONS							
ZONE	SYM	DESCRIPTION	DATE	E.M.N. NO.	DRAFT	CHKD	APPD
A		ITEMS 3 THRU 10 WAS 'X' ITEM 11 WAS CM15C 470J. ADD MARKING NOTE TO A3294-2	3-29-67	18047	L.A.K.		



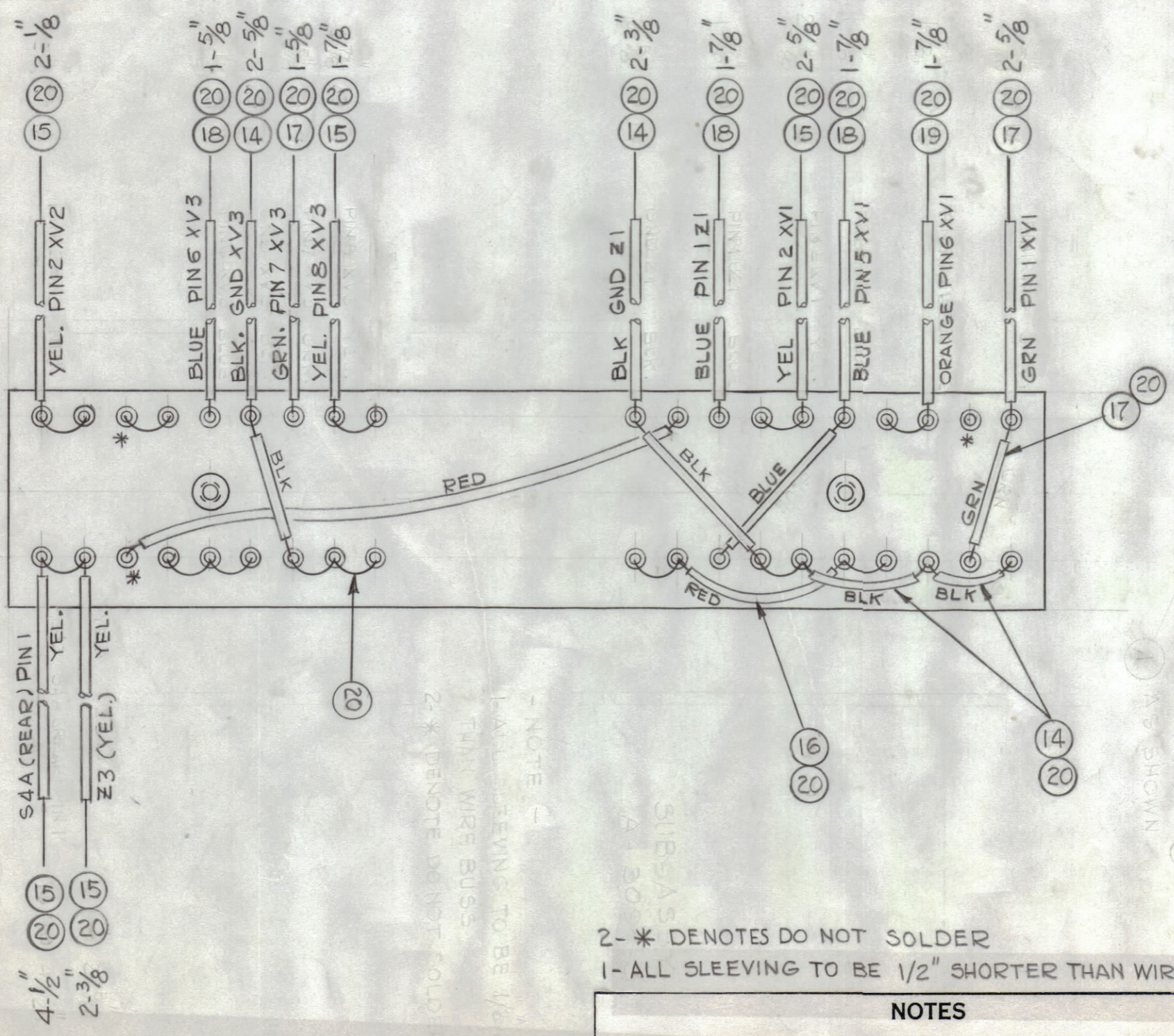
MACHINING A 3294-1
 MATERIAL: 3/32 THK, XXXP PHENOLIC
 FINISH: NATURAL

MARK TMC PT. NO. W/LATEST REV. LETTER.
 MARKING A 3294-2



FINAL ASSY A-3294-4

FINAL ASSY A-3294-4



2- * DENOTES DO NOT SOLDER
 1- ALL SLEEVING TO BE 1/2" SHORTER THAN WIRE BUSS

NOTES

MSR-9		
QTY./UNIT	MODEL USED ON	ASSY. NO.
SCALE 1:1	CODE A	
THE CONTENTS OF THIS DRAWING ARE THE EXCLUSIVE PROPERTY OF THE TECHNICAL MATERIEL CORP. ITS UNAUTHORIZED USE OR REPRODUCTION IN WHOLE OR IN PART IS STRICTLY FORBIDDEN.		

REQ'D.	ITEM	PART NUMBER	DESCRIPTION	SYMBOL
X	21	BS-100	SOLDER, SOFT	
X	20	WL-100-7	WIRE, BUSS	
1	3/8"	PX-104-8-034	SLEEVING INSULATION	ORANGE
5	1/4"	PX-104-6-034		BLUE
4	1"	PX-104-4-034		GREEN
4	3/4"	PX-104-3-034		RED
12	1"	PX-104-2-034		YELLOW
8	1"	PX-104-1-034	SLEEVING INSULATION	BLACK
5	13	CC-100-16	CAPACITOR, FIXED, CERAMIC	
2	12	CC-100-37	CAPACITOR, FIXED, CERAMIC DISC	C7, C8
1	11	CM15C470J03	CAPACITOR, FIXED, MICA	C2
1	10	RC42GF223J	RESISTOR, FIXED, COMPOSITION	R4
1	9	RC20GF224J	RESISTOR, FIXED, COMPOSITION	R11
1	8	RC20GF223J		R5
4	7	RC20GF103J		
1	6	RC20GF222J		R2
1	5	RC20GF182J		R8
1	4	RC20GF221J		R6
1	3	RC20GF121J	RESISTOR, FIXED, COMPOSITION	R50
38	2	TE-109-2	LUG, TERMINAL SPLIT	
2	1	TE-108-16	STANDOFF, RIVET TYPE	

O-POSE		LIST OF MATERIAL	
MATERIAL		THE TECHNICAL MATERIEL CORP. MAMARONECK, NEW YORK	
FINISH		TITLE TERMINAL BOARD ASSY - IF AMPL.	
UNLESS OTHERWISE SPECIFIED DIMENSIONS ARE IN INCHES AND INCLUDE CHEMICALLY APPLIED OR PLATED FINISHES		DRAWN I. RAMIREZ	DATE 9/25/63
DECIMALS X ± .05 XX ± .01 .XXX ± .005		CHECKED Jide	DATE 12-15-63
FRACTIONS ± 1/64 ANGLES ± 0° 30'		ELECT. DES. MECH. DES.	DATE 12-17-63
TOLERANCES		FINAL APPROVAL BP	DATE
		A 3294	
		SHEET	REV. LTR.

A 3294