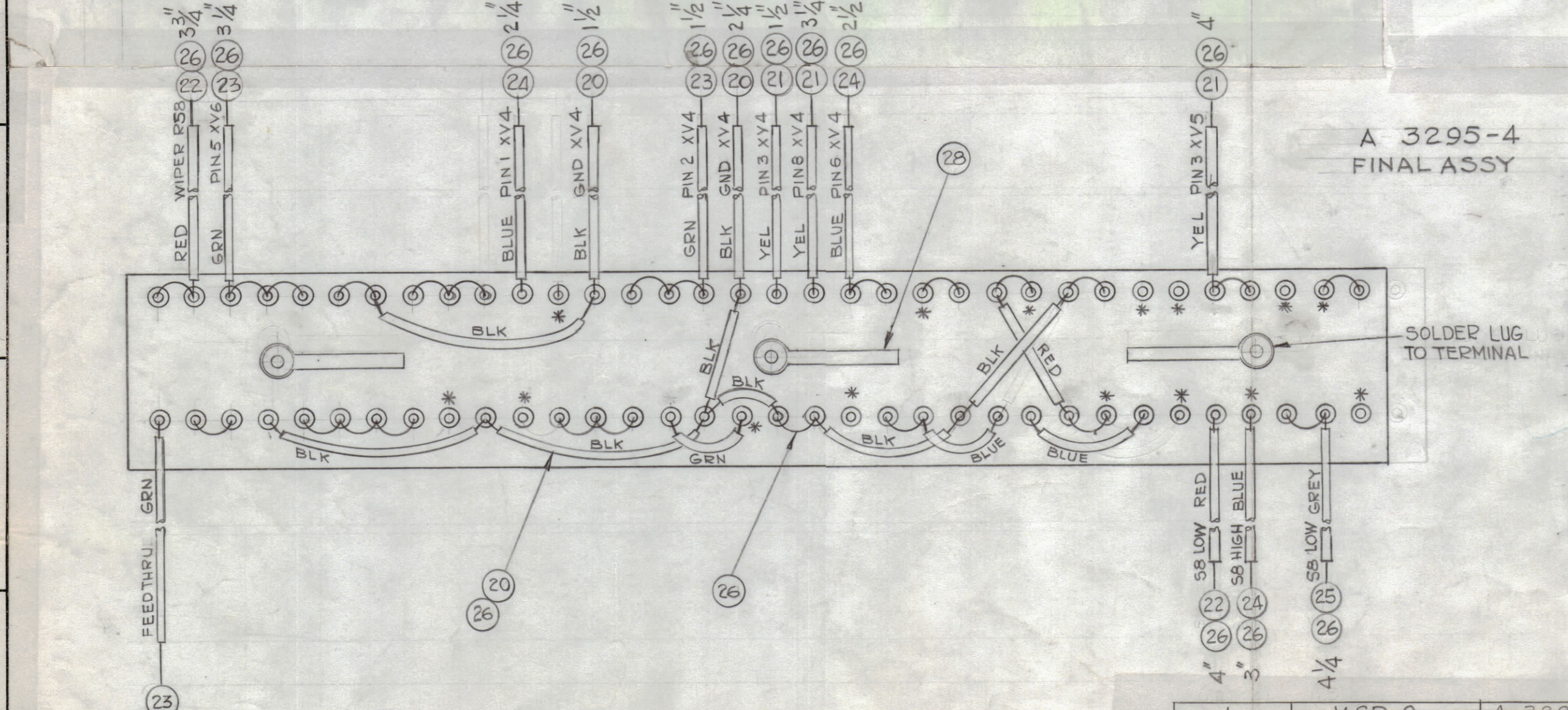
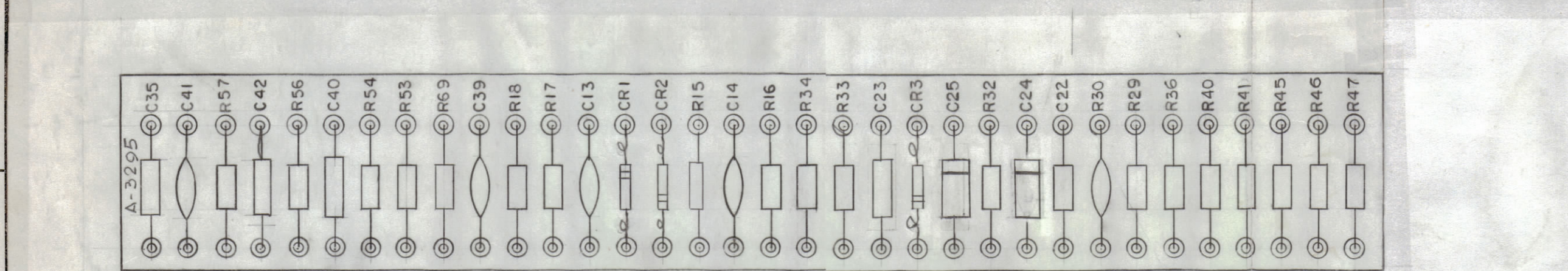
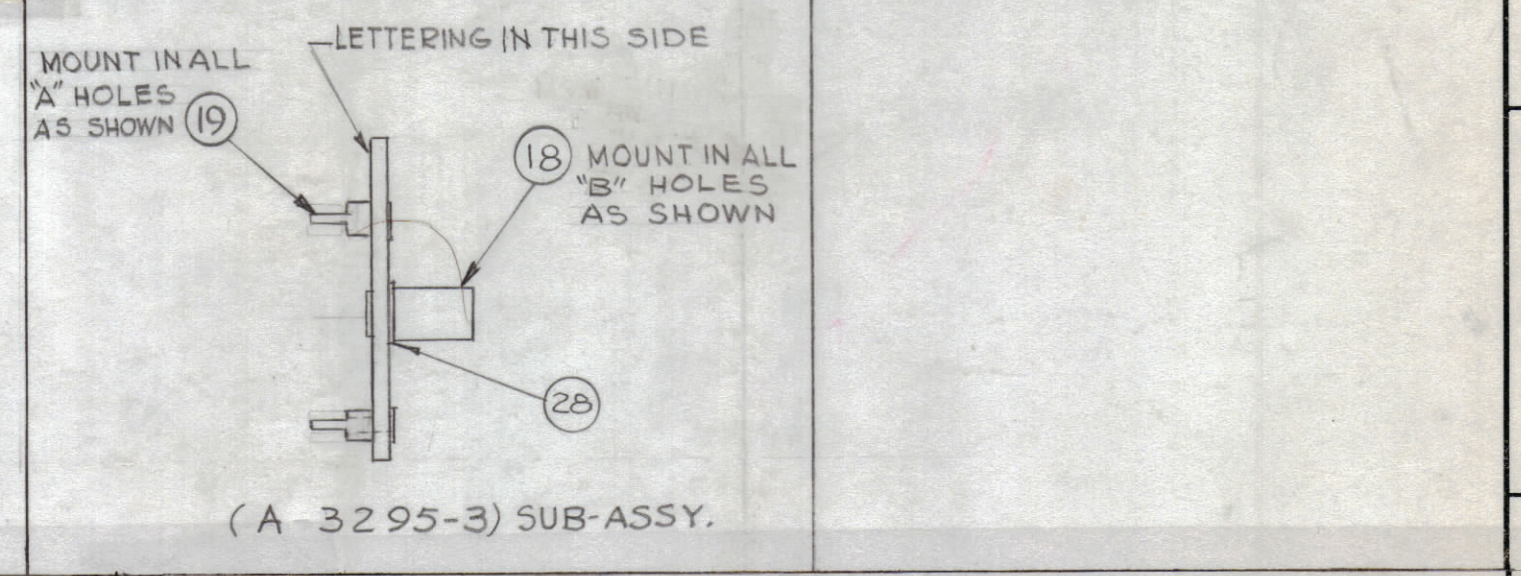
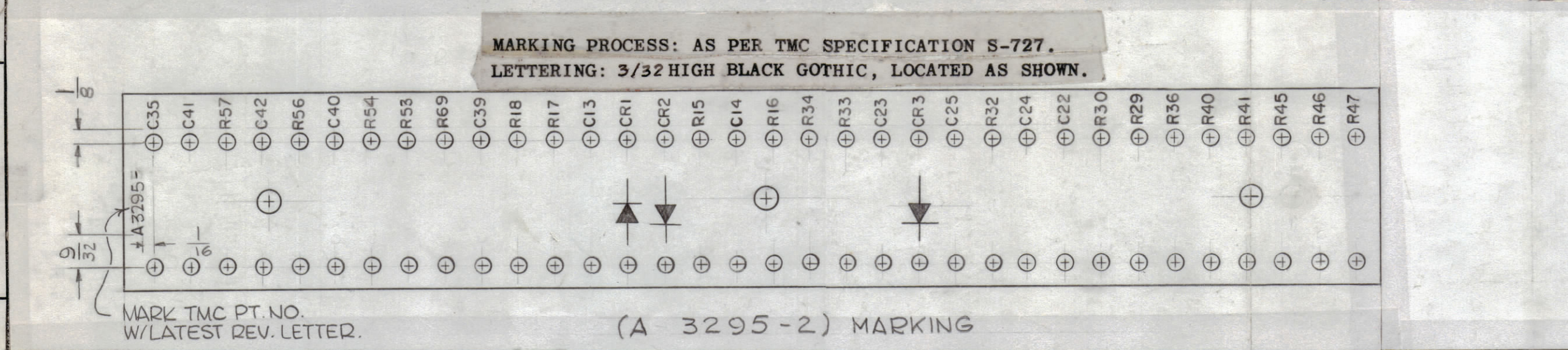


REVISIONS						
ZONE	SYM	DESCRIPTION	DATE	E.M.N. NO.	DRAFT	CHKD
#	A	UPDATED B/M, ITEM #6 WAS CN114R104K	3-9-64	10996	A.M.	QTB
#	B	ON B/M, ITEM 15 REF. SYM "R53" WAS R55	6-11-64	11541	G.D.L.	QTB
#	C	PISTAIL WIRING, POLARITY ADDED TO CR1, CR2, CR3, DIODE SYM. ADDED ON CR1, CR2, CR3, CR5 REVISED	6-14-64	14252	QTB	QTB
#	D	ITEMS 8 THRU 16 "J" WAS "K", ADD MARKING NOTE TO A3295-2	3-29-67	18047	L.A.K.	QTB
#	E	ITEM 11 WAS RC20GF823J	7-13-72	20794	GE	QTB



REQ'D.	ITEM	PART NUMBER	DESCRIPTION	SYMBOL
3	28	TE-116-3	TERMINAL LUG	
X	27	BS-100	SOLDER, SOFT	
X	26	WL-100-7	WIRE, ELECTRICAL S#22	
3-3/4"	25	PX-104-7-034	INSULATION SLEEVING	GRAY
8"	24	PX-104-6-034		BLUE
7"	23	PX-104-4-034		GRN
7-3/4"	22	PX-104-3-034		RED
7-1/4"	21	PX-104-2-034		YEL
13"	20	PX-104-1-034	INSULATION SLEEVING	BLACK
68	19	TE-109-2	TERMINAL LUG	
3	18	TE-108-23	SPACER, CLINCH	
3	17	IN463	SEMICONDUCTOR DEVICE, DIODE, SILICON	
1	16	RC20GF225J	RESISTOR, FIXED, COMPOSITION	R30
5	15	RC20GF474J		
1	14	RC20GF154J		R41
1	13	RC20GF124J		R56
5	12	RC20GF104J		
1	11	RC20GF104J		R57
1	10	RC20GF333J		R40
3	9	RC20GF272J		
2	8	RC20GF681J	RESISTOR, FIXED, COMPOSITION	R45, R47
2	7	CN112A105K-2	CAPACITOR, FIXED, PLASTIC	C25, C24
1	6	CN114R104J	CAPACITOR, FIXED, MYLAR	C40
1	5	CC32CH101J	CAPACITOR, FIXED, CERAMIC	C35
1	4	CC21SH220G	CAPACITOR, FIXED, CERAMIC	C42
3	3	CC-100-37	CAPACITOR, FIXED, CERAMIC DISC	
1	2	CC-100-16	CAPACITOR, FIXED, CERAMIC DISC	C22
2	1	CC-100-9	CAPACITOR, FIXED, CERAMIC DISC	C41, C23

0. POSE		LIST OF MATERIAL	
MATERIAL	THE TECHNICAL MATERIEL CORP. MAMARONECK, NEW YORK		
FINISH	TITLE TERMINAL BOARD ASSY, AGC		

2- \* DENOTE DO NOT SOLDER  
1- ALL SLEEVING TO BE SHORTER THAN WIRE BUSS

NOTES

THE CONTENTS OF THIS DRAWING ARE THE EXCLUSIVE PROPERTY OF THE TECHNICAL MATERIEL CORP. ITS UNAUTHORIZED USE OR REPRODUCTION IN WHOLE OR IN PART IS STRICTLY FORBIDDEN.

Q'TY./UNIT	MODEL USED ON	ASSY. NO.
1	MSR-9	A-3299
SCALE	CODE	
1:1	A	

DECIMALS	FRACTIONS	TOLERANCES	ANGLES
.XX ± .05	± 1/64	± .005	± 0° 30'
.XXX ± .01	± 1/32		
.XXX ± .005	± 1/64		

DRAWN	DATE	FINAL APPROVAL	DATE
T. RAMIREZ	9/27/63	BP	
CHECKED	DATE		
	12-1-63		
ELECT. DES.	DATE		
	12-1-63		
MECH. DES.	DATE		
	12-1-63		

UNLESS OTHERWISE SPECIFIED DIMENSIONS ARE IN INCHES AND INCLUDE CHEMICALLY APPLIED OR PLATED FINISHES

DECIMALS: .XX ± .05, .XXX ± .01, .XXX ± .005  
FRACTIONS: ± 1/64, ± 1/32, ± 1/64  
TOLERANCES: ± .005  
ANGLES: ± 0° 30'

SHEET: A 3295 E

REV. LTR.