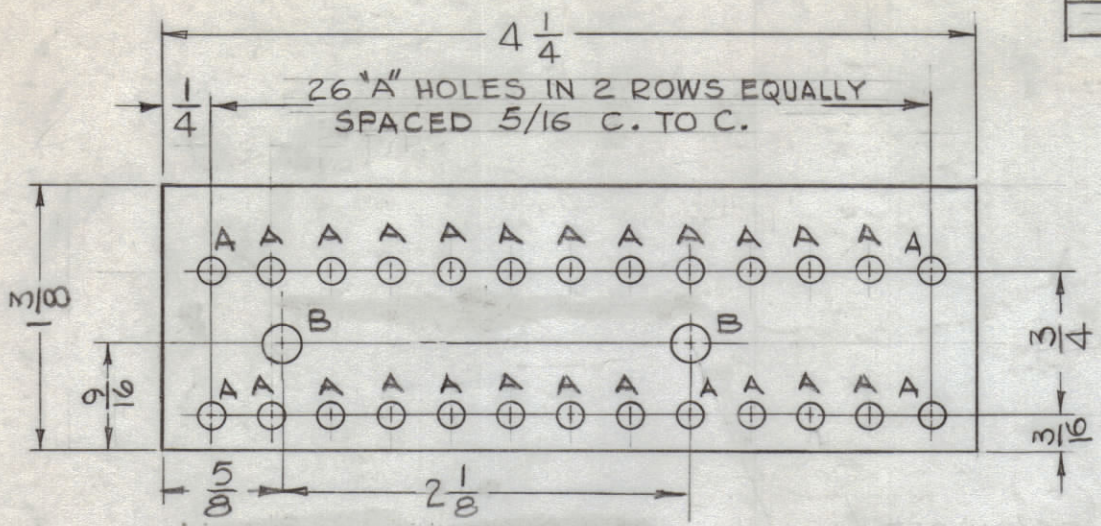


HOLE	DESCRIPTION	REQ
A	.116 DIA.	26
B	.189 DIA.	2

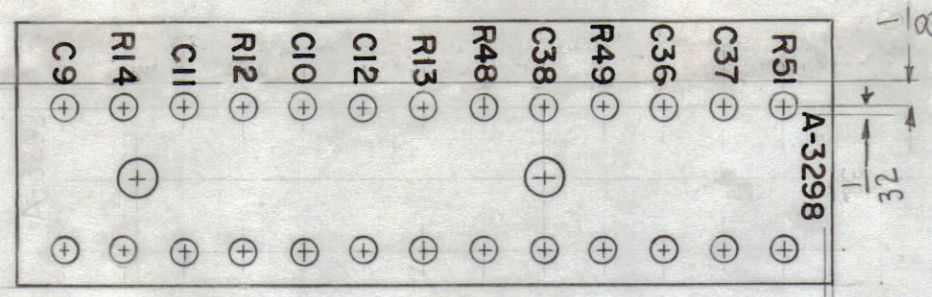
MARKING PROCESS: AS PER TMC SPECIFICATION S-727.
 LETTERING: 3/32 HIGH BLACK GOTHIC, LOCATED AS SHOWN.

REVISIONS						
ZONE	SYM	DESCRIPTION	DATE	E.M.N. NO.	DRAFT	CHKD
B2, D6	A	IT. 6 WAS CC-101-2, ON A-3298-4: C37 WAS DISC	9/24/64	12416	WFB	[Signature]
	B	IT. 7 WAS CNI 14-R104-K (C38 PROPER CONFIG APP)	9/24/64	14252	[Signature]	[Signature]
	C	IT. 9 WAS 223K; IT. 5 10-12 TOL. WAS K	1/27/66	15666	JL	[Signature]
	D	IT. 9 PIN WAS RC20GF154J	7/13/72	20794	CE	[Signature]

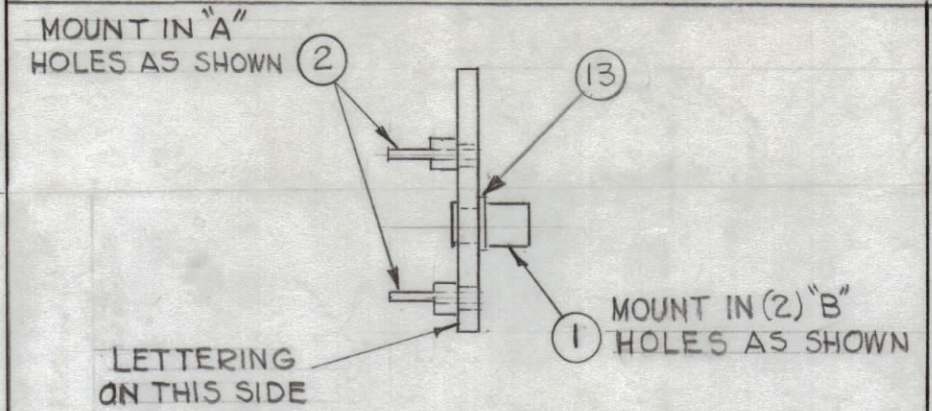


A-3298-1
MACHINING

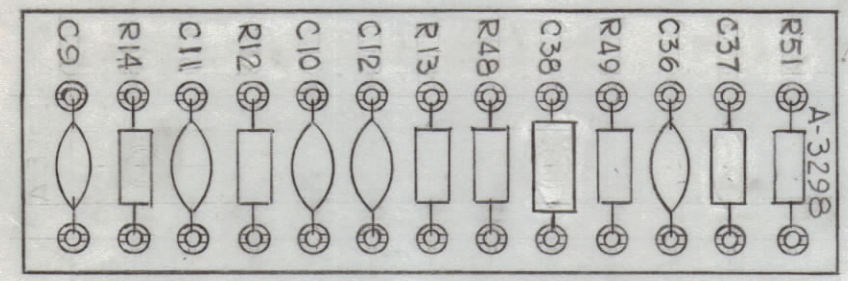
MATERIAL: 3/32 THK, XXXP PHENOLIC - FINISH: NATURAL



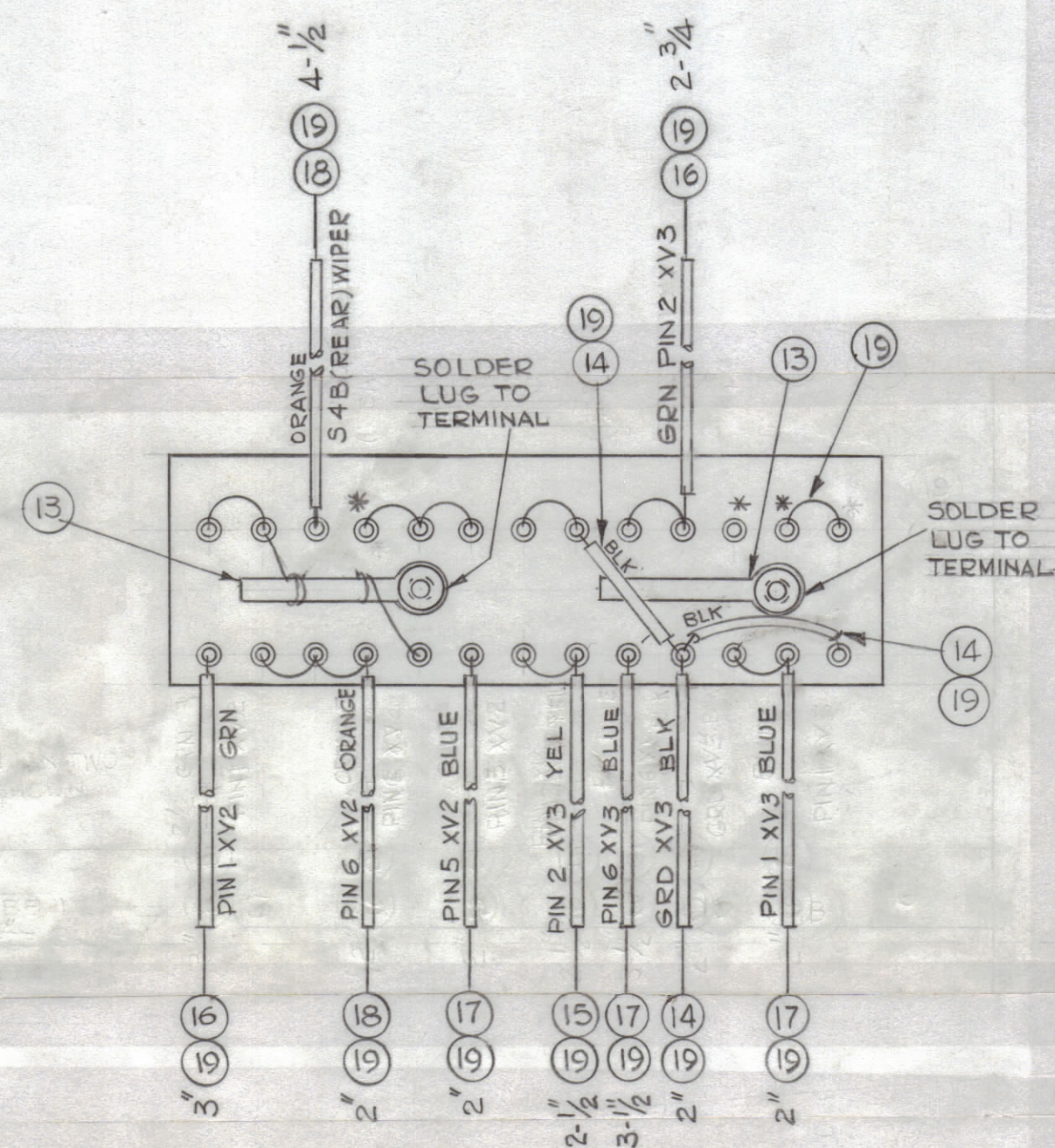
A-3298-2
MARKING



A-3298-3
SUB-ASSY



A-3298-4
FINAL ASSY



2-* DENOTE DO NOT SOLDER
 1- ALL SLEEVING TO BE 1/2" SHORTER THAN WIRE BUSS.

NOTES

1	MSR-9	ASS'Y. NO.
QTY./UNIT	MODEL USED ON	ASS'Y. NO.
SCALE	CODE	
1:1	A	

THE CONTENTS OF THIS DRAWING ARE THE EXCLUSIVE PROPERTY OF THE TECHNICAL MATERIEL CORP. ITS UNAUTHORIZED USE OR REPRODUCTION IN WHOLE OR IN PART IS STRICTLY FORBIDDEN.

REQ'D.	ITEM	PART NUMBER	DESCRIPTION	SYMBOL
X	20	BS-100	SOLDER, SOFT	
X	19	WL-100-7	WIRE, BUSS	
5"	18	PX-104-8-.034	SLEEVING INSULATION	ORANGE
6"	17	PX-104-6-.034	SLEEVING INSULATION	BLUE
4-1/4"	16	PX-104-4-.034		GREEN
1-1/2"	15	PX-104-2-.034		YELLOW
3-3/4"	14	PX-104-1-.034	SLEEVING INSULATION	BLACK
2	13	TE-116-3	LUG, SOLDER	
1	12	RC20GF105J	RESISTOR, FIXED, COMPOSITION	R12
1	11	RC20GF104J	RESISTOR, FIXED, COMPOSITION	R14
2	10	RC20GF393J		R48, 49
1	9	RC20GF223J		R51
1	8	RC20GF182J	RESISTOR, FIXED, COMPOSITION	R13
1	7	CN114R104J	CAPACITOR, FIXED, METALLIC, MYLAR	C38
1	6	CM15F101G	CAPACITOR, FIXED, CERAMIC	C37
2	5	CC-100-37		C9, C12
2	4	CC-100-16		C11, C36
1	3	CC-100-9	CAPACITOR, FIXED, CERAMIC DISC	C10
26	2	TE-109-2	LUG, TERMINAL SPLIT	
2	1	TE-108-3	STANDOFF, RIVET TYPE	

0. POSE LIST OF MATERIAL

MATERIAL	THE TECHNICAL MATERIEL CORP. MAMARONECK, NEW YORK			
FINISH	TITLE TERMINAL BOARD ASSEMBLY - 1st OSC.			
UNLESS OTHERWISE SPECIFIED DIMENSIONS ARE IN INCHES AND INCLUDE CHEMICALLY APPLIED OR PLATED FINISHES		DRAWN T. RAMIREZ	DATE 9/24/63	FINAL APPROVAL BP
DECIMALS X ± .05 XX ± .01 XXX ± .005		CHECKED [Signature]	DATE 12-17-63	DATE
FRACTIONS ± 1/64 ANGLES ± 0° 30'		ELECT. DES. [Signature]	DATE	DATE
TOLERANCES		MECH. DES. [Signature]	DATE 12-17-63	DATE
			SHEET	REV. LTR.

A-3298