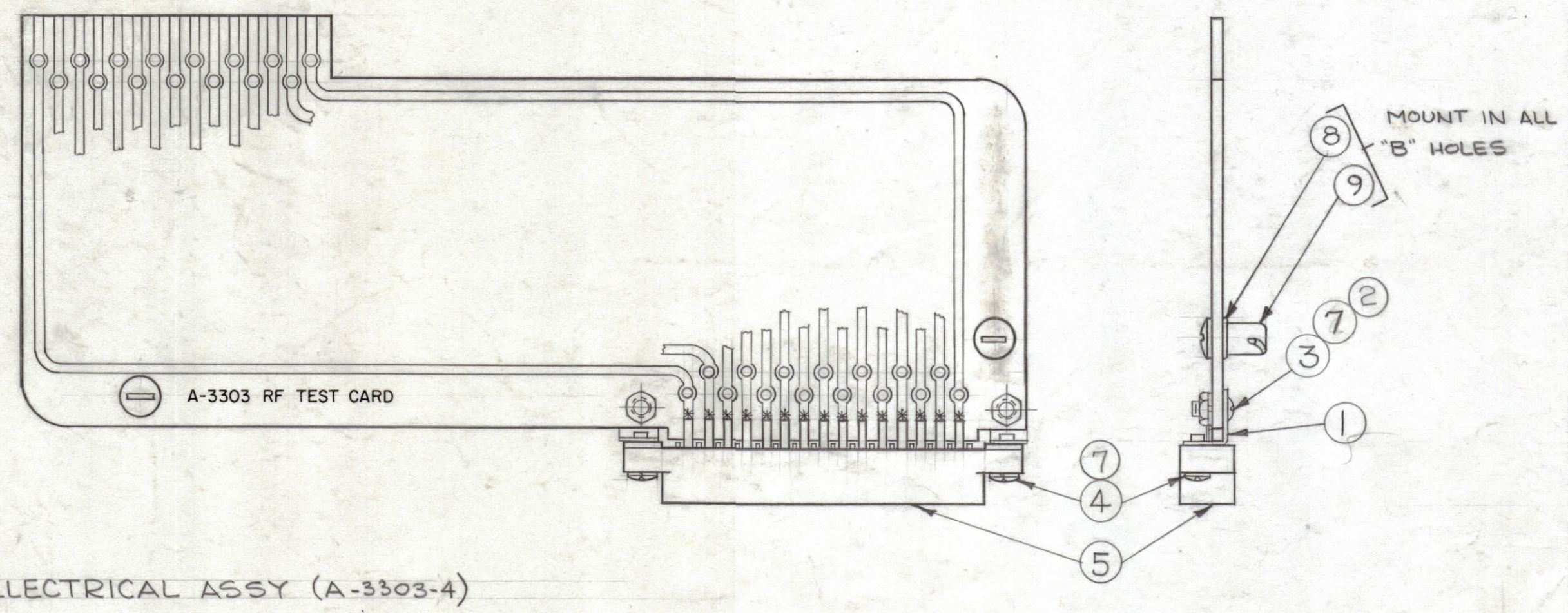
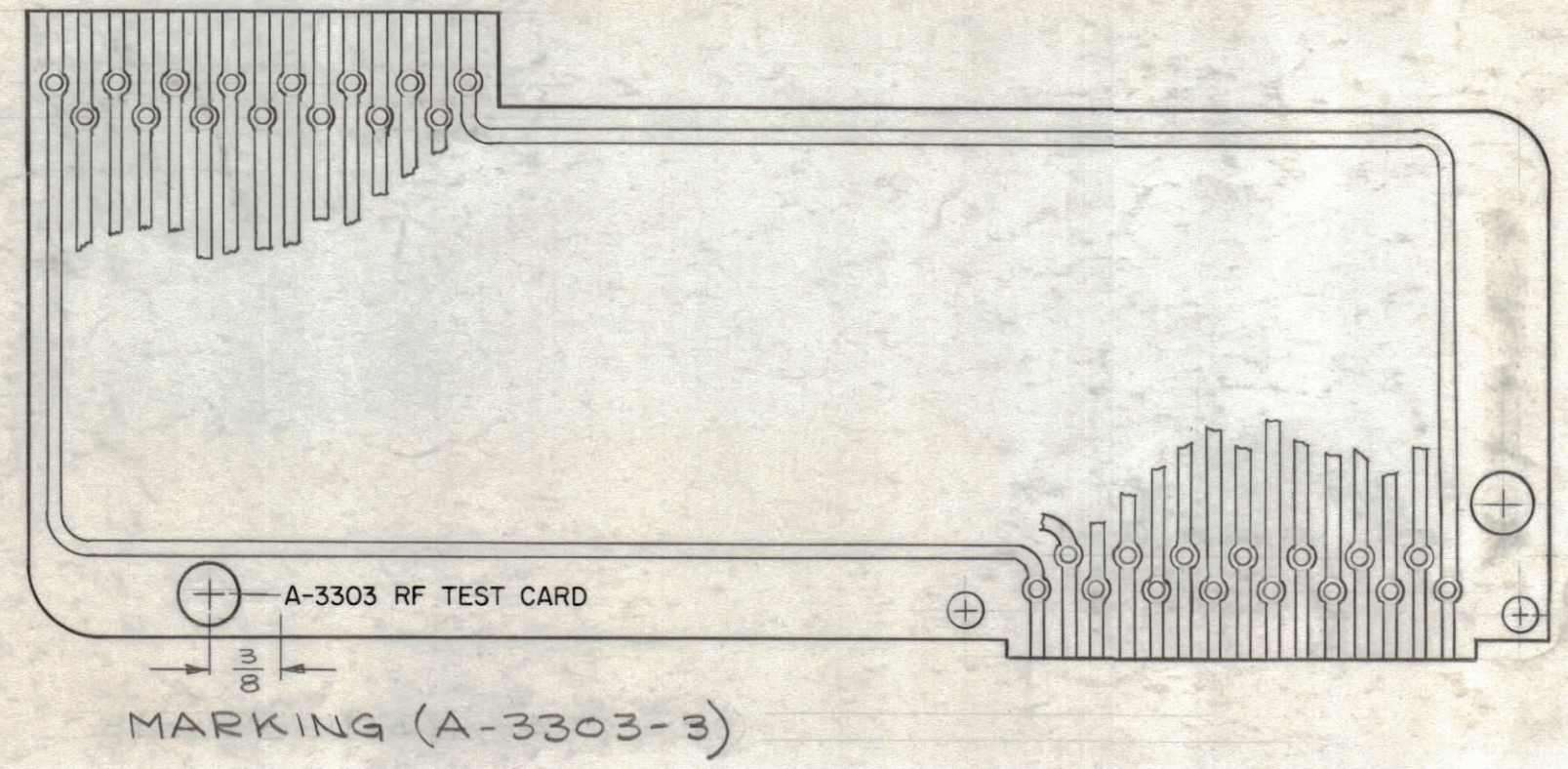


- UNLESS OTHERWISE SPECIFIED -
 1- LETTERING TO BE 3/32 HIGH, BLACK GOTHIC.
 2- MARKING PROCESS AS PER TMC SPEC. S-727.

REVISIONS							
ZONE	SYM	DESCRIPTION	DATE	E.M.N. NO.	DRAFT	CHKD	APPD
#	X1	ITEM 7, 8, & 9 ADDED; SEE SHEET 2 OF 2	4/24/64	1	JS		133
	0	ORIGINAL RELEASE FOR PRODUCTION	5/12/64	0	A.M.		
#	A	SEE SHEET 1 OF 2 REVISION "A"	10-1-64	12455	J.V.	@	
	8	ET SWAS JJ 293-155	8/17/65	14680	H.V.L.		



REQ'D.	ITEM	PART NUMBER	DESCRIPTION	SYMBOL
2	9	FS-110-3	STUD, SLOTTED HEAD	B
2	8	FS-109-3	RING, STUD RETAINING	B
4	7	LW506MRN	LOCKWASHER, SPLIT	
X	6	BS-100	SOLDER, SOFT	
1	5	JJ-293-155FE	CONNECTOR, RECEPTACLE	
2	4	SCBP0632BN6	SCREW, MACHINE	
2	3	SCBP0632BN4	SCREW, MACHINE	
2	2	NTH0632BN8	NUT, HEX.	
2	1	TE-167	LUG, ANGLE, THREADED	

M. GELLMAN LIST OF MATERIAL

MATERIAL	THE TECHNICAL MATERIEL CORP. MAMARONECK, NEW YORK		
FINISH	TITLE PRINTED CIRCUIT BOARD, ASSY. (R.F. TEST CARD)		
DRAWN G. Jensen	DATE 10-1-63	FINAL APPROVAL	
CHECKED @	DATE 5-22-64	DATE 5-22-64	
ELECT. DES. @	DATE 5-22-64	A-3303	
MECH. DES. @	DATE 5-7-64	SHEET 2 OF 2	

*-SOLDER CONTACTS TO PRINTED CIRCUIT BOARD AS INDICATED.

1	VLR-1	
Q'TY./UNIT	MODEL USED ON	ASSY. NO.
SCALE 1:1	CODE A	
THE CONTENTS OF THIS DRAWING ARE THE EXCLUSIVE PROPERTY OF THE TECHNICAL MATERIEL CORP. ITS UNAUTHORIZED USE OR REPRODUCTION IN WHOLE OR IN PART IS STRICTLY FORBIDDEN.		

NOTES

A-3303 B