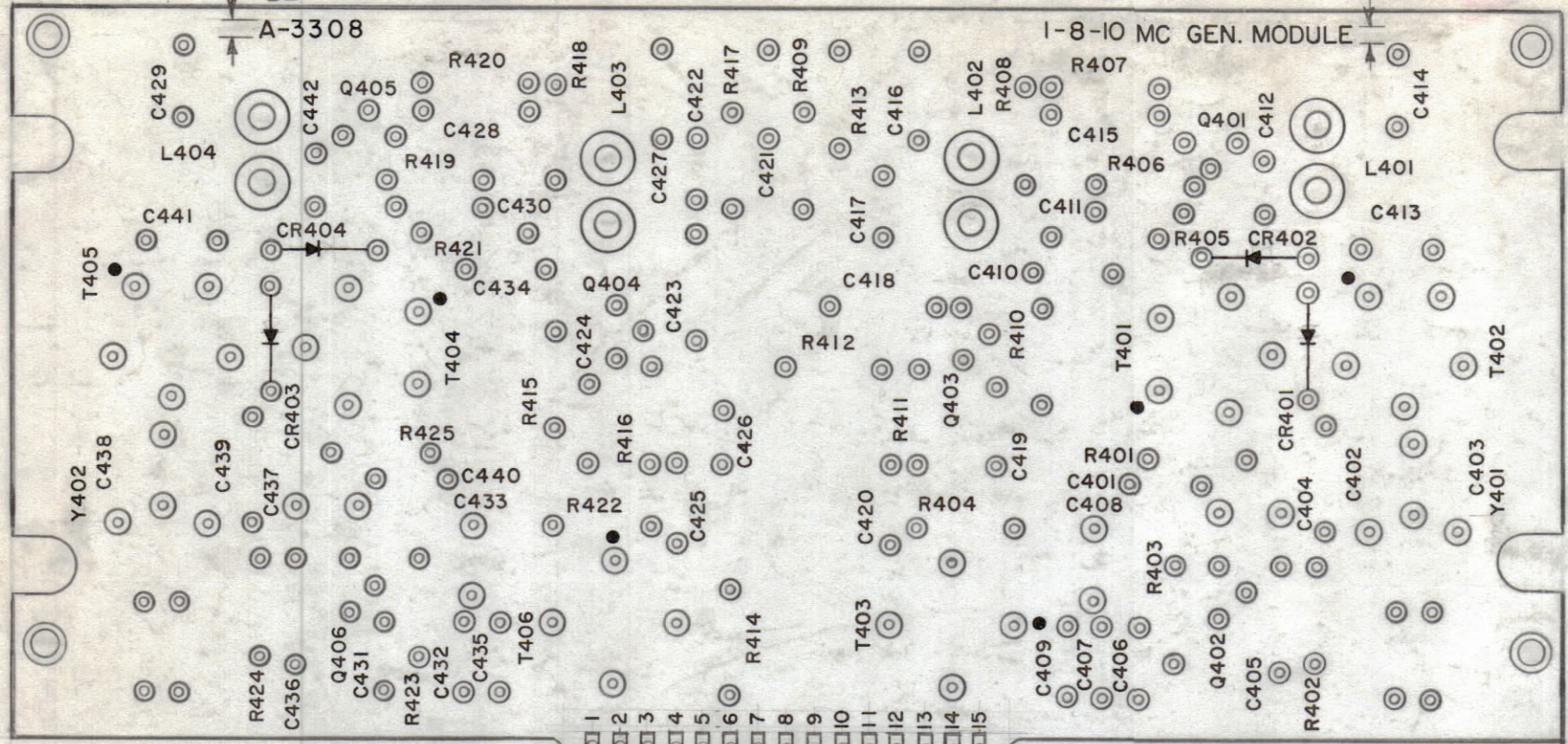
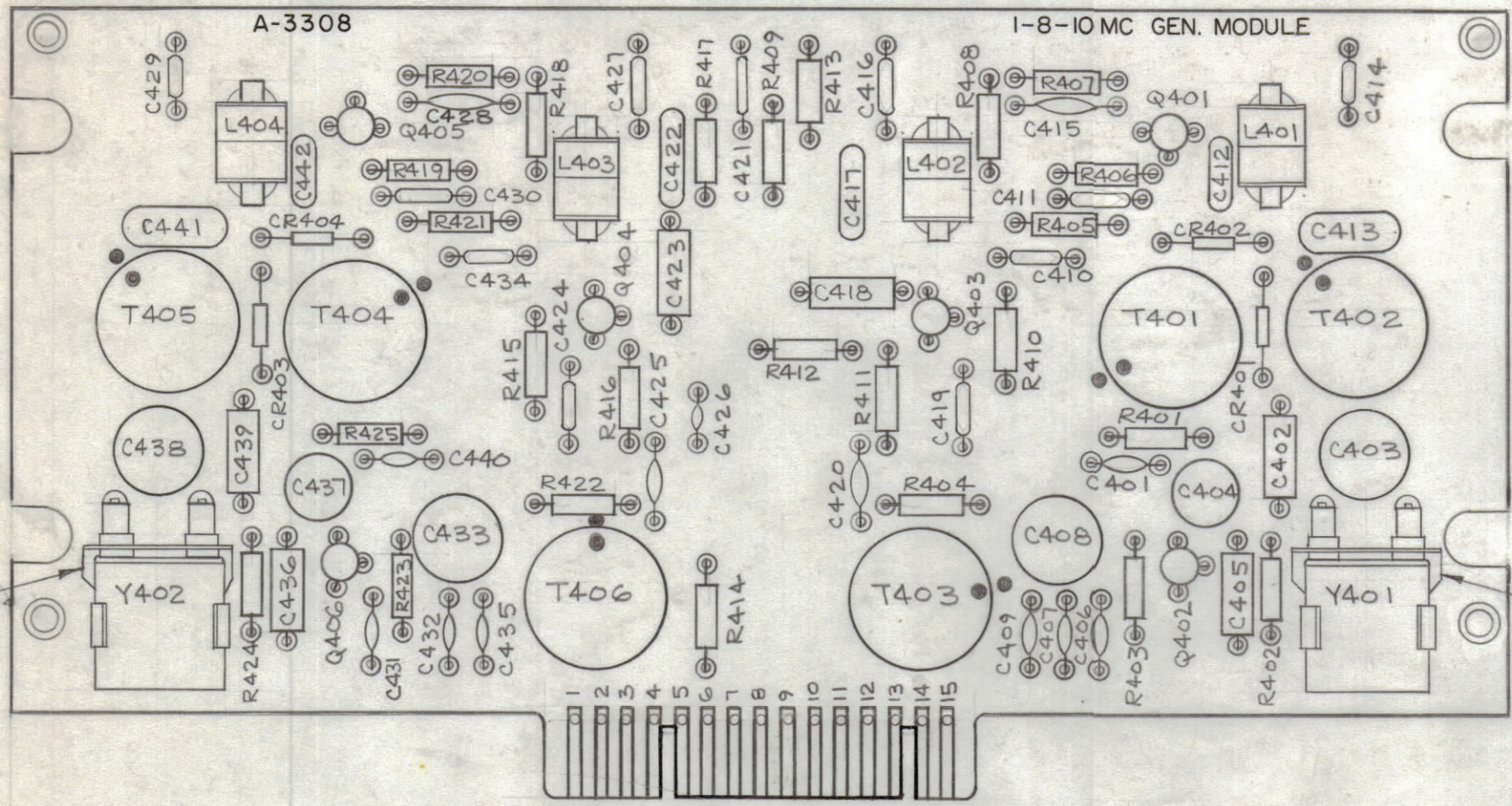


-UNLESS OTHERWISE SPECIFIED-
1-ALL LETTERING TO BE 5/64 HIGH BLACK GOTHIC, LOCATE AS SHOWN ± 1/64.
2-MARKING PROCESS: AS PER TMC SPEC S-727.
3-ALL DOTS TO BE 1/16 DIA, .010 STROKE.



NOTE:
MARK TMC P/N WITH
LATEST REVISION LETTER

MARKING NG (A-3308-3)
150
2 1/16 (14) EQUAL CENTERS
TYR



Q401 THRU Q406
CR401 THRU CR404
C403, 408, 433, 438

L401 THRU L404

C410, 411, 414, 416, 419, 421, 424, 427, 429, 430, 434

C401, 406, 407, 409, 420, 425, 431, 432, 435, 440

R403, 405, 410, 415, 419, 421, 423

R402, 404, 406, 407, 408, 411, 418, 418, 423, 422, 424

REF: CK-701

LETTERING ON THIS SIDE

29
MOUNT IN ALL "A" HOLES

SUB-ASS'Y
(A-3308-4)

ELECTRICAL ASS'Y
(A-3308-5)

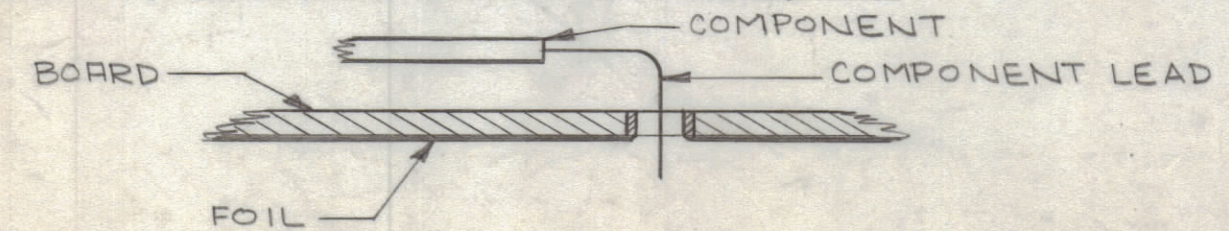
REVISIONS							
ZONE	SYM	DESCRIPTION	DATE	E.M.N. NO.	DRAFT	CHKD	APPD
#	X1	REVISED PT N°S & DESCRIPTION OF ITEMS 26 THRU 28.	1/29/63	1	J.L.		JL
#	X2	ITEMS (19) THRU (23) ADDED	4/24/64	2	SP		SP
EP, 63	X3	ITEM 29, NT144-0440 & SUB ASSY (A3308-4) DELETED	7-1-64	3	NP	@	NP
DB, AT	X3	ITEMS 20 & 21 ADDED; FUNGUS NOTE ADDED					
	X4	ADDED ITEM 29, SUB ASSY, MTG HOLES & SLOTS.	7/29/64	4	JL	@	JL
	O	ORIGINAL RELEASE FOR PRODUCTION	7-31-64				
	A	TO IT. 11, 13, 14 P/N "J" ADD, TO IT. 15, 17 P/N H55 & IT. 18 H35 ADD.	8-26-64	12181	HB		HB
	B	IT. 10 WAS CM112 R474, IT. 17 WAS CM112 E152 H55, IT. 18 WAS CM112 E 622 H35, IT. 20 WAS CR113A/U, IT. 21 W. CR113	10-29-64	12786	HB		HB
#	C	IT. (28) WAS 2N1637; IT. (24) WAS 1N100 (SEE SHEET #1)	2-10-65	13224	Blair		Blair

	35						
	34						
	33						
	32						
X	31	B5 100	SOLDER, SOFT				
2	30	TS 167-1	SOCKET, CRYSTAL				XY401 XY402
4	29	NT-144-0440	NUT, PLAIN, SPLINE				
2	28	TZ 169	TRANSFORMER, R.F., FIXED				T403, 406
2	27	TZ 171	TRANSFORMER, R.F., FIXED				T402, 405
2	26	TZ 164	TRANSFORMER, R.F., FIXED				T401, 404
6	25	TX105	TRANSISTOR				
4	24	1N100	DIODE				
4	23	CV-109-8	CAPACITOR, VARIABLE				
2	22	CV 112-4	CAPACITOR, VARIABLE				C404, 437
1	21	CR113-15	CRYSTAL (10 MC)				Y402
1	20	CR113-14	CRYSTAL (8 MC)				Y401
4	19	CL 327	COIL, RF				
2	18	CM112 E622 J35	CAPACITOR, FIXED, MICA				C413, 441
2	17	CM112 E152 D55	CAPACITOR, FIXED, MICA				C417, 422
2	16	CM111 E471 H55	CAPACITOR, FIXED, MICA				C412, 418
1	15	CM111 E321 H55	CAPACITOR, FIXED, MICA				C442
2	14	CM15B470J	CAPACITOR, FIXED, MICA				C405, 436
1	13	CM15B331J	CAPACITOR, FIXED, MICA				C423
1	12	CM15B240J	CAPACITOR, FIXED, MICA				C439
1	11	CM15B101J	CAPACITOR, FIXED, MICA				C402
11	10	CC-112R474M	CAPACITOR, FIXED, CERAMIC				C421
10	9	CC-100-35	CAPACITOR, FIXED, CERAMIC DISC.				
3	8	CC-100-29	CAPACITOR, FIXED, CERAMIC DISC.				C415, 426, 428
1	7	RC20GF822K	RESISTOR, FIXED COMPOSITION				R409
1	6	RC20GF392K					R417
2	5	RC20GF332K					R412, 414
1	4	RC20GF331K					R413
7	3	RC20GF103K					
11	2	RC20GF102K					
2	1	RC20GF101K	RESISTOR, FIXED COMPOSITION				R401, 425

REQ'D.	ITEM	PART NUMBER	DESCRIPTION	SYMBOL
M. GELLMAN LIST OF MATERIAL				
MATERIAL			THE TECHNICAL MATERIEL CORP. MAMARONECK, NEW YORK	
FINISH			TITLE PRINTED CIRCUIT BOARD, ASSY. (1-B-10 MC GEN. MODULE)	
Q'TY./UNIT		MODEL USED ON	ASSY. NO.	
SCALE		CODE		
UNLESS OTHERWISE SPECIFIED DECIMALS ARE IN INCHES AND INCLUDE CHEMICALLY APPLIED OR PLATED FINISHES				
DRAWN		DATE	FINAL APPROVAL	
CHECKED		DATE	DATE	
ELECT. DES.		DATE	DATE	
MECH. DES.		DATE	DATE	
TOLERANCES		ANGLES		
DECIMALS		FRACTIONS		
.XX ± .01		± 1/64		
.XXX ± .005		± 0° 30'		
SHEET		2 OF 2		REV. LTR.

ASSEMBLY NOTICE

- 1- TO MOUNT COMPONENTS INSERT LEAD THROUGH PLATED-THRU HOLES AND BEND ABOUT 1/16 OF LEAD OVER COPPER FOIL AS SHOWN.
- 2- APPLY HEAT AND SOLDER TO LEAD AND FOIL - CAUTION- TOO MUCH HEAT WILL CAUSE THE FOIL TO SEPARATE FROM THE BOARD.
- 3- CLEAN AND INSPECT AS PER S-676.
- 4- FUNGUS PROOF PER TMC SPEC S113.



NOTES

THE CONTENTS OF THIS DRAWING ARE THE EXCLUSIVE PROPERTY OF THE TECHNICAL MATERIEL CORP. ITS UNAUTHORIZED USE OR REPRODUCTION IN WHOLE OR IN PART IS STRICTLY FORBIDDEN.

DATE 7-3-63 DATE 7-26-64 DATE 7-26-64 SHEET 2 OF 2