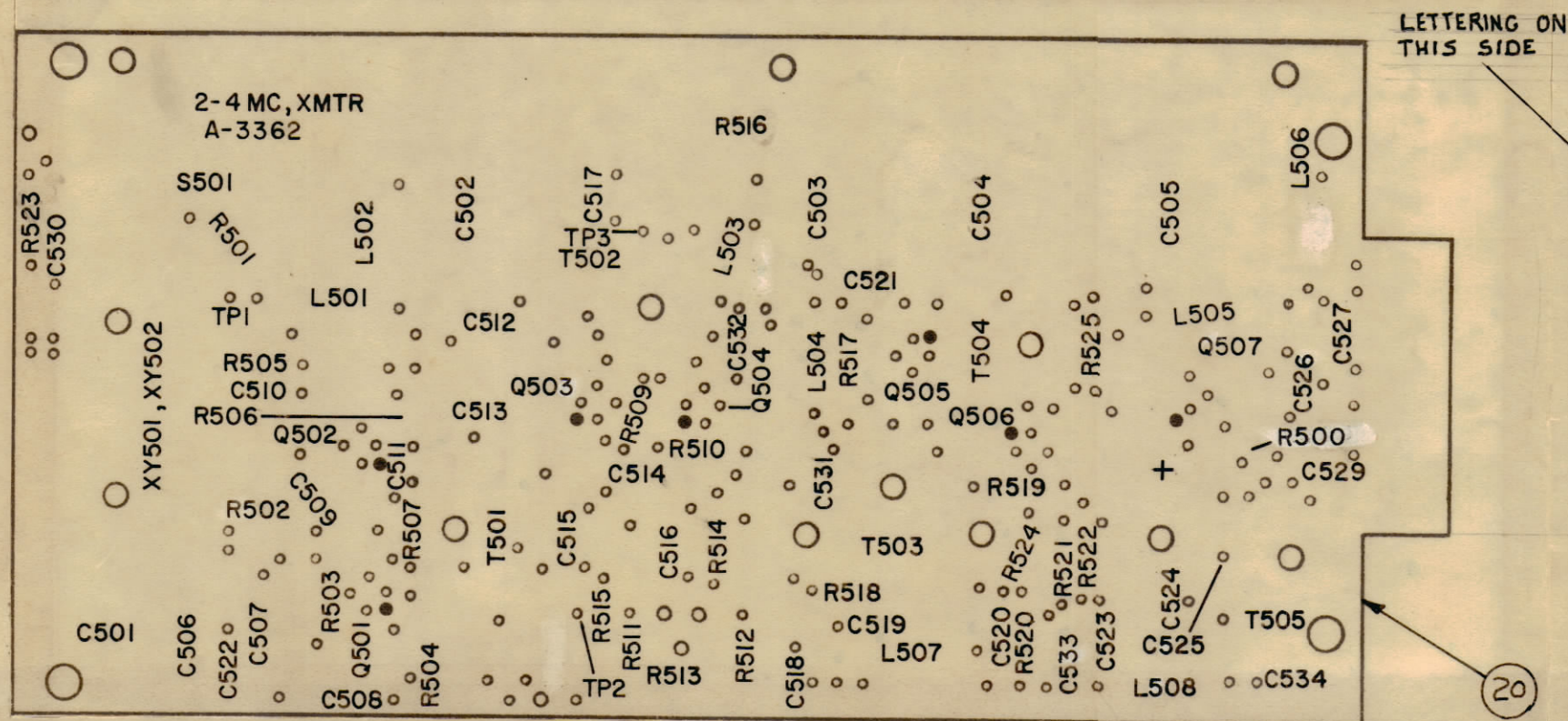
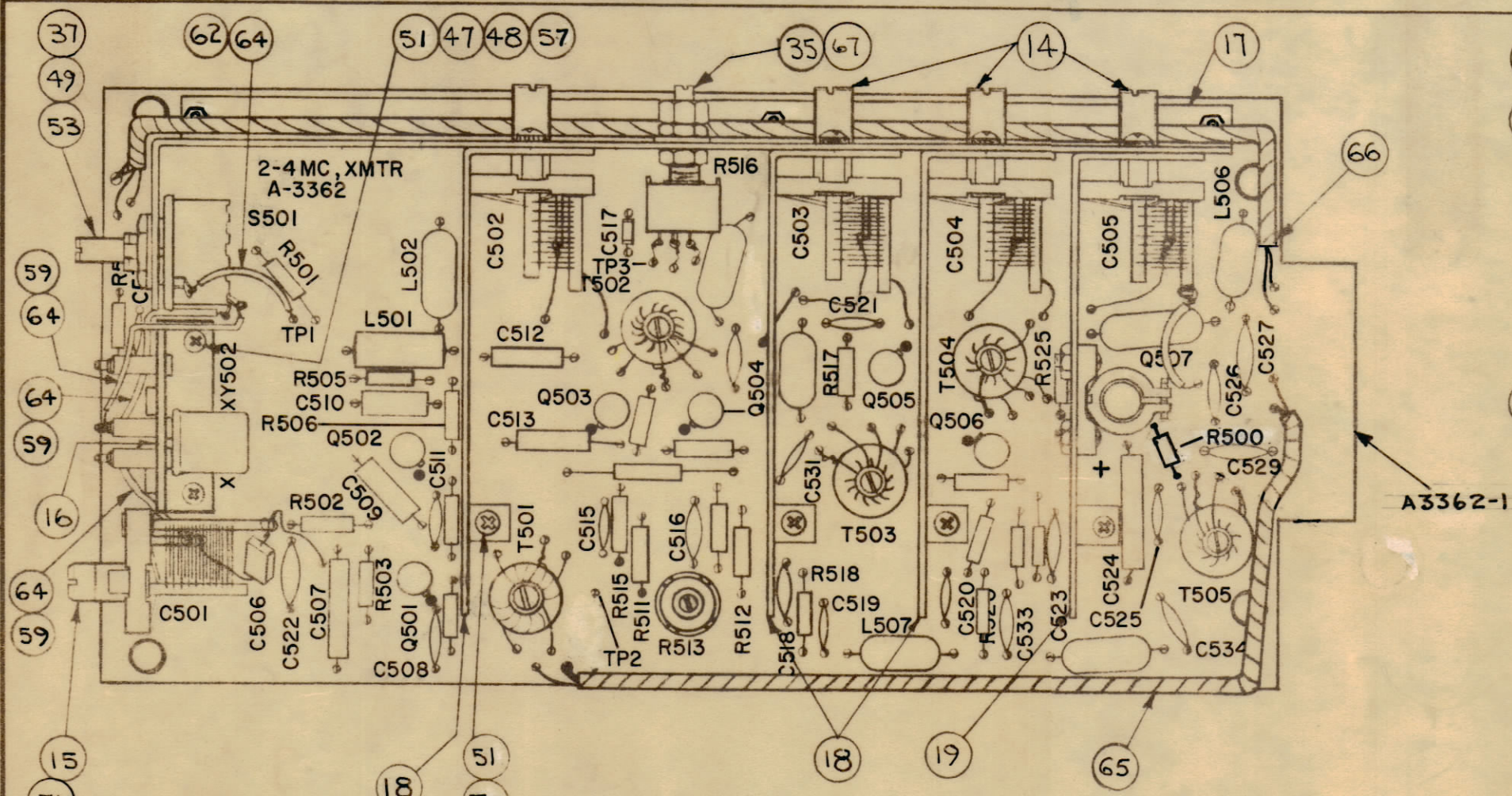


ZONE	SYM.	DESCRIPTION	DATE	EMN. NO.	DRAFT	CHKD	APPD
-	A	UPDATED PER EMN NO. 11376.	5-7-64	11376	WB		
-	B	UPDATED PER EMN NO. 11741	7-14-64	11741	WB		
-	C	UPDATED PER EMN NO. 12329	9-10-64	12329	C.D.L.		
-	D	ON B/M: IT. 22 DELE; IT. 23 QTY WAS 3, SYM. R507 DELE; IT. 43 P/N WAS 2N2084; IT. 44 P/N WAS 2N2219; IT. 48 QTY. WAS 17; IT. 69 & 70 ADD; ON PICT: R508 DELE. ON A3362-1 & A3362-2.	11-9-65	13315	RF		
-	E	IT. 71 ADDED TO B/M & PICT.	2-3-65	13394	RF		
-	F	IT. 9 WAS CM15B470J; IT. 11 WAS CM20C202J.	3-2-65	13745	RF		
-	G	IT. 69 WAS RC20GF221J	7-7-66	16509	RF		



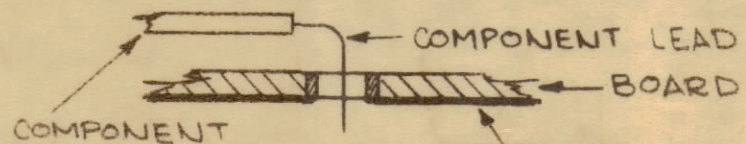
- UNLESS OTHERWISE SPECIFIED
1. ALL LETTERING TO BE 5/32 HIGH, WHITE GOTHIC.
 2. MARKING PROCESS PER TMC SPEC. 5-727.
 3. ALL LINES TO BE .015 STROKE, WHITE GOTHIC.
 4. ALL DOTS TO BE 1/16 DIA., WHITE GOTHIC.

MARKING A-3362-1



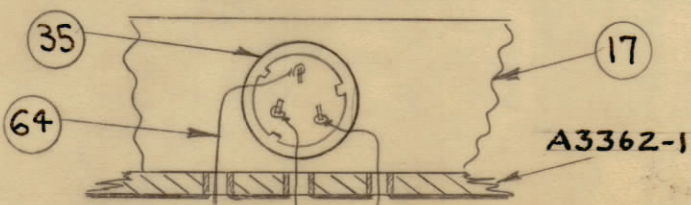
ELECTRICAL ASSY A-3362-2

- ASSEMBLY NOTICE -
- 1- TO MOUNT COMPONENTS, INSERT LEAD THROUGH PLATED THRU HOLES & BEND ABOUT 1/16 OF LEAD OVER COPPER FOIL AS SHOWN.
 - 2- APPLY HEAT & SOLDER TO LEAD & FOIL ~ CAUTION ~ TOO MUCH HEAT WILL CAUSE FOIL TO SEPARATE FROM THE BOARD.
 - 3- CLEAN & INSPECT PER SPEC S-676.

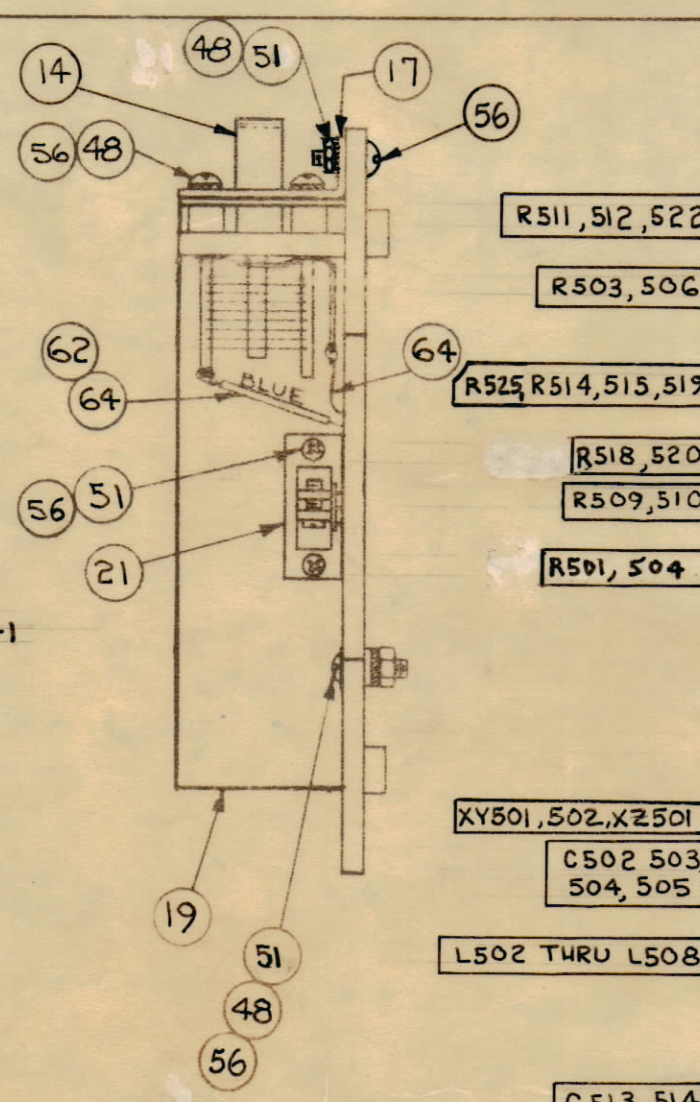


NOTES

MOUNTING DETAIL FOR SYMBOLS T501 THRU T505



R513 WIRING DETAIL (REAR VIEW)



REQ'D.	ITEM	PART NUMBER	DESCRIPTION	SYMBOL
1	71	PX370-3-7	INS. SLVG.-TEF.	NATURAL
4	70	LW104MRN	WASHER, LOCK, INTERNAL	
1	69	RC20GF102J	RESISTOR, FIXED, COMPOSITION	R507
1	68	RC20GF390J	RESISTOR, FIXED, COMPOSITION	R500
1	67	NTH2532BN10	NUT, HEX.	
1	66	CA-808-2	CABLE, ASSY. SHIELDED	W501
1	65	CA-418-9	CABLE, ASSY. R.F.	W502
1-02	64	WL-100-8	WIRE, BUSS, SIZE 24	
0-3	63	PX-104-7-022	SLEEVING, SIZE 24	GRAY
0-2	62	PX-104-6-022	SLEEVING, SIZE 24	BLUE
0-2	61	PX-104-4-022	SLEEVING, SIZE 24	GRN
0-2	60	PX-104-3-022	SLEEVING, SIZE 24	RED
0-2	59	PX-104-2-022	SLEEVING, SIZE 24	YEL
X	58	BS-100	SOLDER, SOFT	
2	57	SCBP0440BN5	SCREW, MACHINE	
17	56	SCBP0440BN4	SCREW, MACHINE	
5	55	SC-143-0440B10	SCREW, MACHINE, NYLON	
	54	DELETED		
1	53	NTH3732BN18	NUT, HEX	
	52	DELETED		
11	51	NTH0440BNG	NUT, HEX	
10	50	NT-137-0440	NUT, HEX, NYLON	
1	49	LW137MRN	WASHER, LOCK, INTERNAL	
13	48	LWE04MRN	WASHER, LOCK, EXTERNAL	
2	47	FW04HBN	WASHER, FLAT	
10	46	FW-101-1	WASHER, FLAT, NYLON	
7	45	PX-829-1	PAD, TRANSISTOR MOUNTING	
1	44	TX100	TRANSISTOR	Q507
6	43	TX109	TRANSISTOR	
1	42	TZ-145	TRANSFORMER, R.F.	T505
1	41	TZ-144	TRANSFORMER, R.F.	T504
1	40	TZ-143	TRANSFORMER, R.F.	T503
1	39	TZ-142	TRANSFORMER, R.F.	T502
1	38	TZ-141	TRANSFORMER, R.F.	T501
1	37	SW-192-12NSJ	SWITCH, ROTARY	S501
1	36	RVIIIU501A	RESISTOR, VARIABLE, COMPOSITION	R513
1	35	RV106UX 80501A	RESISTOR, VARIABLE, COMPOSITION	R516
1	34	RC20GF680K	RESISTOR, FIXED, COMPOSITION	R517
3	33	RC20GF561K	RESISTOR, FIXED, COMPOSITION	
1	32	RC20GF560K	RESISTOR, FIXED, COMPOSITION	R523
2	31	RC20GF472K	RESISTOR, FIXED, COMPOSITION	
1	30	RC20GF470K	RESISTOR, FIXED, COMPOSITION	R524
	29	DELETED		
4	28	RC20GF331K	RESISTOR, FIXED, COMPOSITION	
2	27	RC20GF273K	RESISTOR, FIXED, COMPOSITION	R502, R505
2	26	RC20GF222K	RESISTOR, FIXED, COMPOSITION	
2	25	RC20GF183J	RESISTOR, FIXED, COMPOSITION	
1	24	RC20GF123K	RESISTOR, FIXED, COMPOSITION	R521
2	23	RC20GF102K	RESISTOR, FIXED, COMPOSITION	
	22	DELETED		
1	21	HD-100	HEAT SINK	
1	20	PC-102-3	P. C. BOARD	
1	19	MS-3560	SHIELD, R.F. OUTPUT	
3	18	MS-3380	SHIELD, R.F.	
1	17	MS-3372	BRACKET, CAPACITOR MOUNTING	
1	16	LD-1342/MS-3414	BRACKET, XTAL/ SOCKET	
1	15	CT-104-3	CAPACITOR, VARIABLE, AIR	C501
4	14	CT-103-1	CAPACITOR, VARIABLE, AIR	
1	13	CL-240-100	COIL, R.F., FIXED	L501
7	12	CL-140-5	COIL, R.F., FIXED	
1	11	CM20C681J	CAPACITOR, FIXED, MICA	C507
1	10	CM15B820J	CAPACITOR, FIXED, MICA	C510
1	9	CM15B050J	CAPACITOR, FIXED, MICA	C510
2	8	CM15B330J	CAPACITOR, FIXED, MICA	C506
1	7	CM15B181K	CAPACITOR, FIXED, MICA	C512
1	6	CM15B101J	CAPACITOR, FIXED, MICA	C509
1	5	CE-107-1	CAPACITOR, FIXED, ELECTROLYTIC	C524
6	4	CC-100-33	CAPACITOR, FIXED, CERAMIC, DISC	
6	3	CC-100-25	CAPACITOR, FIXED, CERAMIC, DISC	
7	2	CC-100-16	CAPACITOR, FIXED, CERAMIC, DISC	
1	1	CC20RH020C	CAPACITOR, FIXED, CERAMIC	C517

PALMER

LIST OF MATERIAL

MATERIAL		THE TECHNICAL MATERIEL CORP.	
FINISH		MAMARONECK, NEW YORK	
TITLE		PRINTED CIRCUIT BOARD ASSEMBLY	
DRAWN		(2-4 MC, XMTR)	
CHECKED		DATE	
DATE		DATE	
ELECT. DES.		DATE	
MECH. DES.		DATE	
TOLERANCES		SHEET	
FRACTIONS		REV. LTR.	

1	TTRT-1	A-
QTY/UNIT	MODEL USED ON	ASSY. NO.
SCALE	CODE	
1:1	A	
THE CONTENTS OF THIS DRAWING ARE THE EXCLUSIVE PROPERTY OF THE TECHNICAL MATERIEL CORP. ITS UNAUTHORIZED USE OR REPRODUCTION IN WHOLE OR IN PART IS STRICTLY FORBIDDEN.		