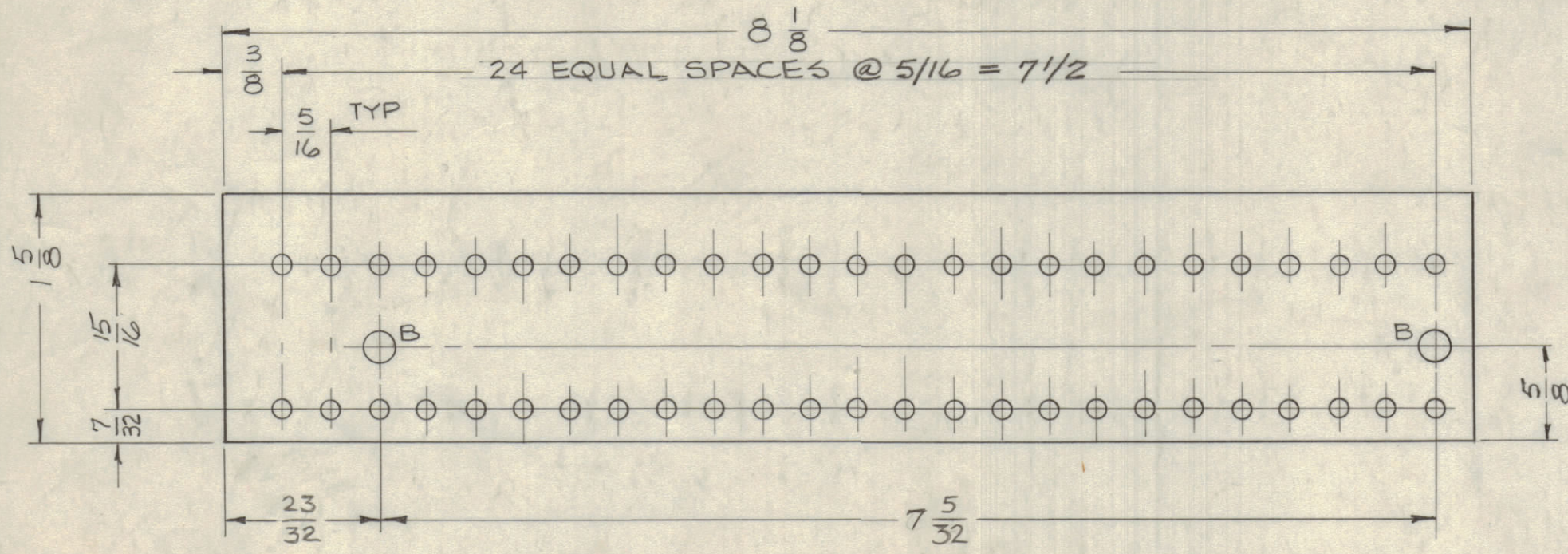
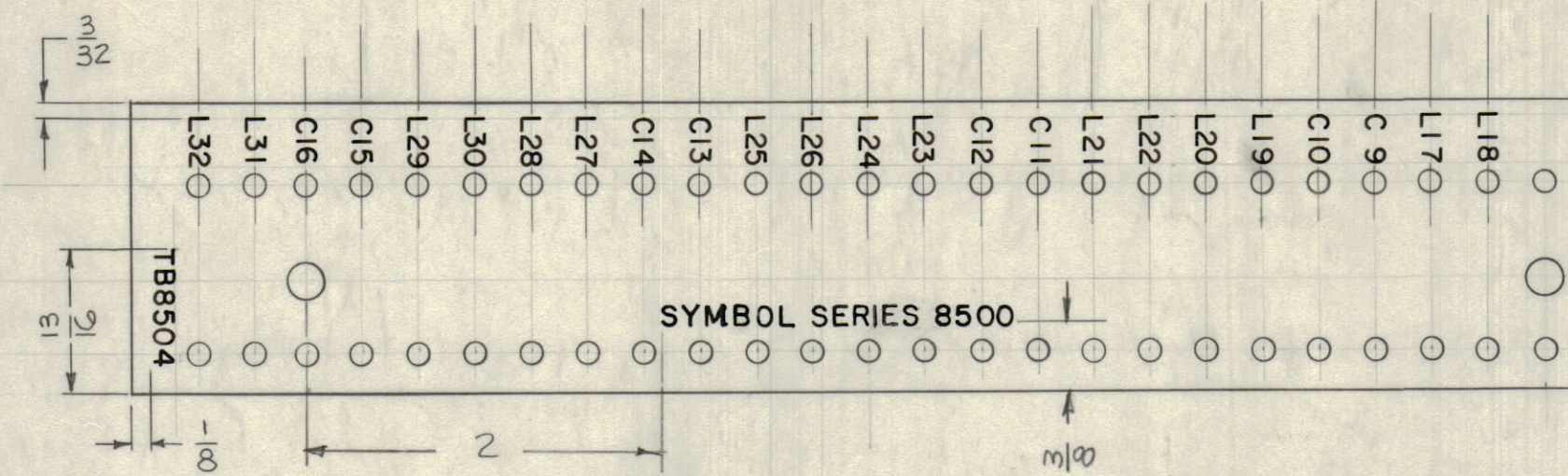


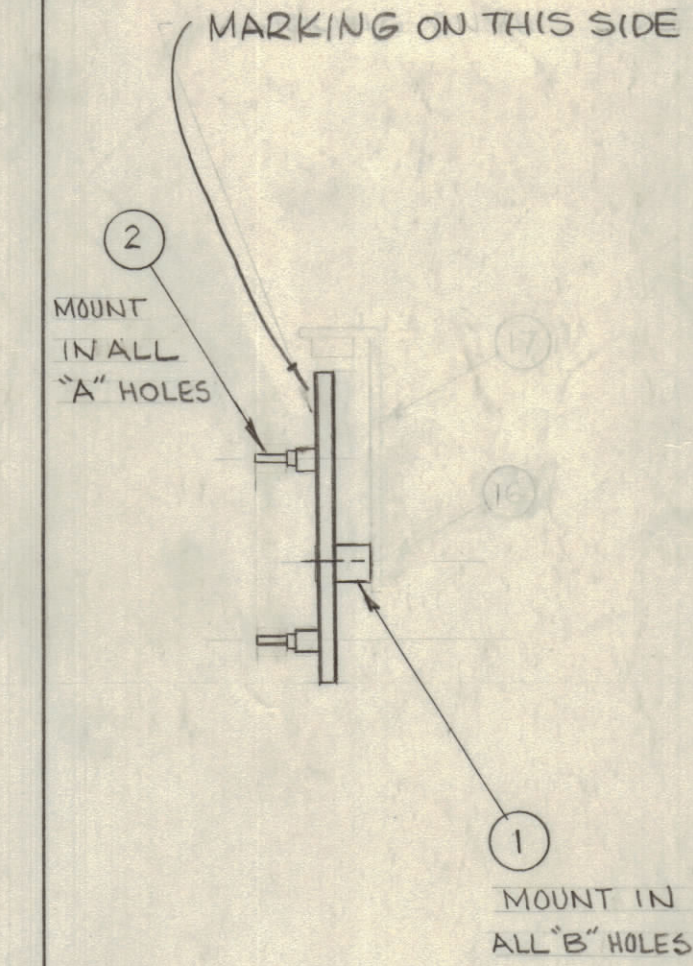
* A - .116 DIA. - 25 HOLES
 B - .189 DIA. - 2 HOLES



MATL - G-11 SILICONE FIBERGLASS, 3/32 THK
 FINISH - GREEN - SEMI-GLOSS
 A-3417-1
 MACHINING
 - UNLESS OTHERWISE SPECIFIED -
 ALL HOLES ARE "A" (*)

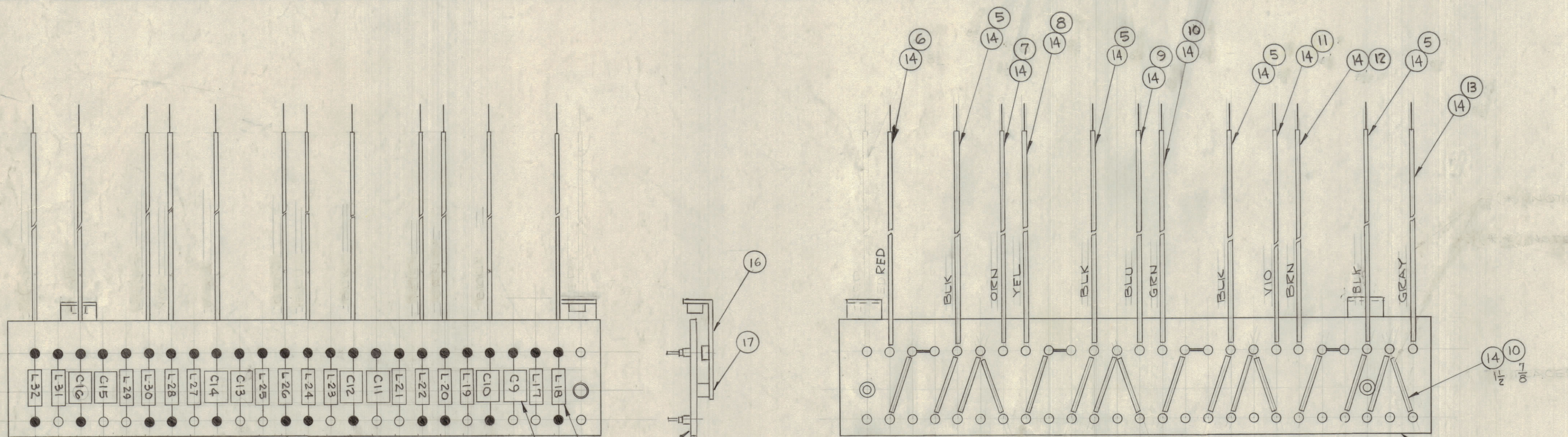


A-3417-2
 MARKING
 - UNLESS OTHERWISE SPECIFIED -
 ALL LETTERING TO BE 1/8 HIGH BLACK GOTHIC
 LOCATED ABOUT CENTER LINES OF HOLES APPROX.
 AS SHOWN.
 MARKING PROCESS: AS PER TMC SPEC. 5727.



A-3417-3
 SUB-ASSY

REVISIONS							
ZONE	SYM	DESCRIPTION	DATE	E.M.N. NO.	DRAFT	CHKD	APPR
X		EXPERIMENTAL RELEASE	3/16/64		NP		
X		BUILD UP; A3417-3 & A3417-4 CLARIFIED	2-4-65		G.D.L		
Ø		ORIGINAL RELEASE FOR PRODUCTION	2-4-65		G.D.L	AM	



MARKING ON THIS SIDE

REAR OF BOARD SHOWN

● TO BE SOLDERED AT THIS ASSY.

FRONT OF BOARD SHOWN

A-3417-4
 FINAL ASSY

REQ'D.	ITEM	PART NUMBER	DESCRIPTION	SYMBOL
2	17	SCFP0632BN4	SCREW, MACHINE	
2	16	MS-3665	BRACKET, MOUNTING	
X	15	BS-100	SOLDER, TIN ALLOY	
X	14	NL-100-7	WIRE, ELEC. BUSS	
	13	PX-104-7 - .034	INSULATION, SLEEVING, ELECT.	
	12	-5 - .034		
	11	-9 - .034		
	10	-4 - .034		
	9	-6 - .034		
	8	-2 - .034		
	7	-8 - .034		
	6	-3 - .034		
	5	PX-104-1 - .034	INSULATION, SLEEVING, ELECT.	
	4	CM15B511J	CAPACITOR, FIXED, MICA, DIELECTRIC	
	16	CL-210-10	COIL, RF	
	50	TE-109-2	TERMINAL, STUD	
	2	TE-108-2	NUT, PLAIN CLINCH	

LIST OF MATERIAL						
MATERIAL	THE TECHNICAL MATERIEL CORP. MAMARONECK, NEW YORK					
FINISH	TITLE					
SEE MACH.	TERMINAL BOARD ASSY					
SEE MACH.	DRAWN <i>[Signature]</i> DATE 7/2/64					
UNLESS OTHERWISE SPECIFIED DIMENSIONS ARE IN INCHES AND INCLUDE CHEMICALLY APPLIED OR PLATED FINISHES			CHECKED <i>[Signature]</i> DATE 2/11/65	ELECT. DES. <i>[Signature]</i> DATE		FINAL APPROVAL <i>[Signature]</i> DATE
DECIMALS ± .05	FRACTIONS ± 1/64		ELECT. DES. DATE		A-3417-Ø	
XX ± .01	ANGLES ± 1° 30'		MECH. DES. DATE		SHEET	
XXX ± .005	TOLERANCES		DATE		REV. LTR.	

FUNGUS PROOFING PER TMC SPECIFICATION S-113

RAK-35A		
SCALE	MODEL USED ON	ASSY. NO.

NOTES

THE CONTENTS OF THIS DRAWING ARE THE EXCLUSIVE PROPERTY OF THE TECHNICAL MATERIEL CORP. ITS UNAUTHORIZED USE OR REPRODUCTION IN WHOLE OR IN PART IS STRICTLY FORBIDDEN.

A-3417-Ø