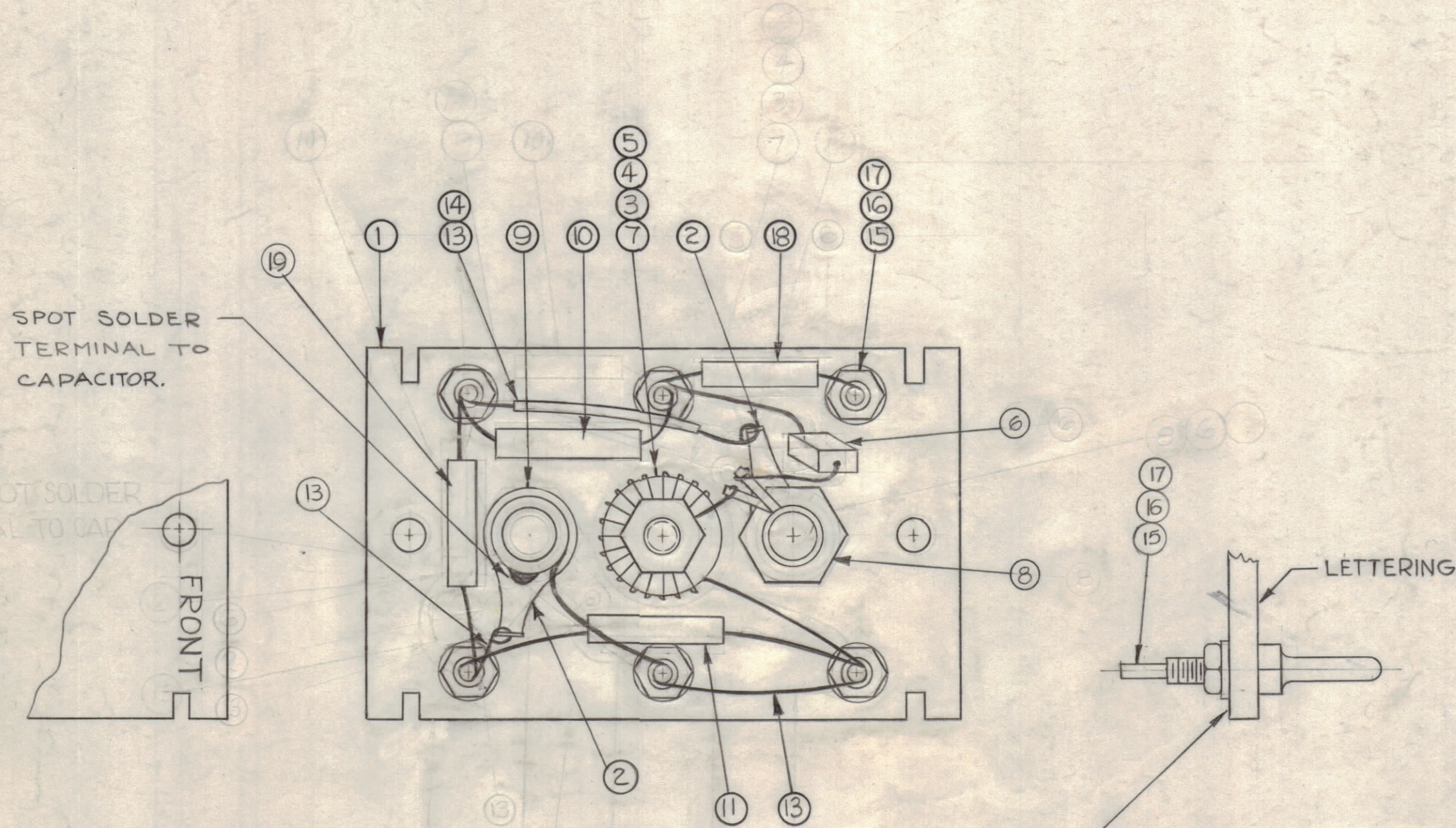


NOTICE TO PERSONS RECEIVING THIS DRAWING

THE TECHNICAL MATERIEL CORPORATION claims proprietary right in the material disclosed hereon. This drawing is issued in confidence for engineering information only and may not be reproduced or used to manufacture anything shown hereon without permission from THE TECHNICAL MATERIEL CORPORATION to the user. This drawing is loaned for mutual assistance and is subject to recall at any time.

Property of:
THE TECHNICAL MATERIEL CORPORATION
MAMARONECK, NEW YORK



1	19	CM20F751G03	CAPACITOR, 750 MMF	C1045
1	18	CM15C470J03	CAPACITOR, 47MMF	C1054
6	17	NTH0440BNG	NUT, HEXAGON	
6	16	LWS04MRN	WASHER, LOCK, SPRING TYPE	
6	15	TE 191-1	TERMINAL	
X	14	PX 104-1-034	INSULATION, SLEEVING #20	
X	13	WL-100-6	WIRE, BUSS #20 AWG	
X	12	BS-100	SOLDER, SOFT	
1	11	CM15C820G03	CAPACITOR, 82 MMF	C1046
1	10	CM20F821G03	CAPACITOR, 820 MMF	C1044
1	9	CV-108-3	CAPACITOR, VARIABLE 0.9-18	C1047
1	8	AC-170	COIL, RF, TUNED	L1013
1	7	CL-330	COIL, R.F. ASSEMBLY	L1012
1	6	CM15F471G03	CAPACITOR 470MMF	C1043
1	5	FW-101-1	WASHER FLAT, NYLON	
1	4	NT-137-0632	NUT, NYLON	
1	3	SC-143-0632-B-10	SCREW, NYLON	
2	2	TE 104-4	LUG, GROUND	
1	1	LD 1466/PX-650	TERMINAL BOARD, OSC. (LETTERED)	

REQ. ITEM	PART NO.	ANGER	DESCRIPTION	SYMBOL
THE TECHNICAL MATERIEL CORP. MAMARONECK, NEW YORK				
STOCK SIZE				
MATERIAL				
AX 482 ASS'Y (TERMINAL BOARD OSC. BAND*1)				
G.D.L.		DRAWN		FINAL APPROVAL
j. Anger		A 3492		B
ELEC. DES. APP.		MECH. DES. APP.		SHEET OF

COMPONENTS TO BE ASSEMBLED ON REAR OF BOARD, OPPOSITE SIDE OF LETTERING (SEE LD-1466)

SPOT SOLDER TERMINAL TO CAPACITOR.

SPOT SOLDER TERMINAL TO CAPACITOR.
FRONT

B	ADD -03 TO IT'S 6, 10, 11, 18, 19 PIN	3-1-67	17852	RME		
A	IT. 9 P/N WAS CV110-3	1-22-65	13337	84		
0	ORIGINAL RELEASE FOR PRODUCTION	8-13-64				
X	EXPERIMENTAL RELEASE	3/25/64				
SYM	ZONE	DESCRIPTION	DATE	CH. NO.	DRAFTS	CHECKER
UNLESS OTHERWISE SPECIFIED:			SCALE 2:1			
DIMENSIONS ARE IN INCHES			MAXIMUM ALLOWABLE TOLERANCES HAVE BEEN DETERMINED AND ANY DEVIATIONS WILL BE CAUSE FOR REJECTION. REMOVE ALL BURRS & SHARP EDGES			
TOLERANCES ON FRACTIONS ± 1/64 DECIMALS ± .005 ANGLES ± 1/2°						

1	HFR-2			
1	HFR-1A			2-24-64
REQ. PER UNIT	MODEL	SECTION	ASS'Y. NO.	DATE