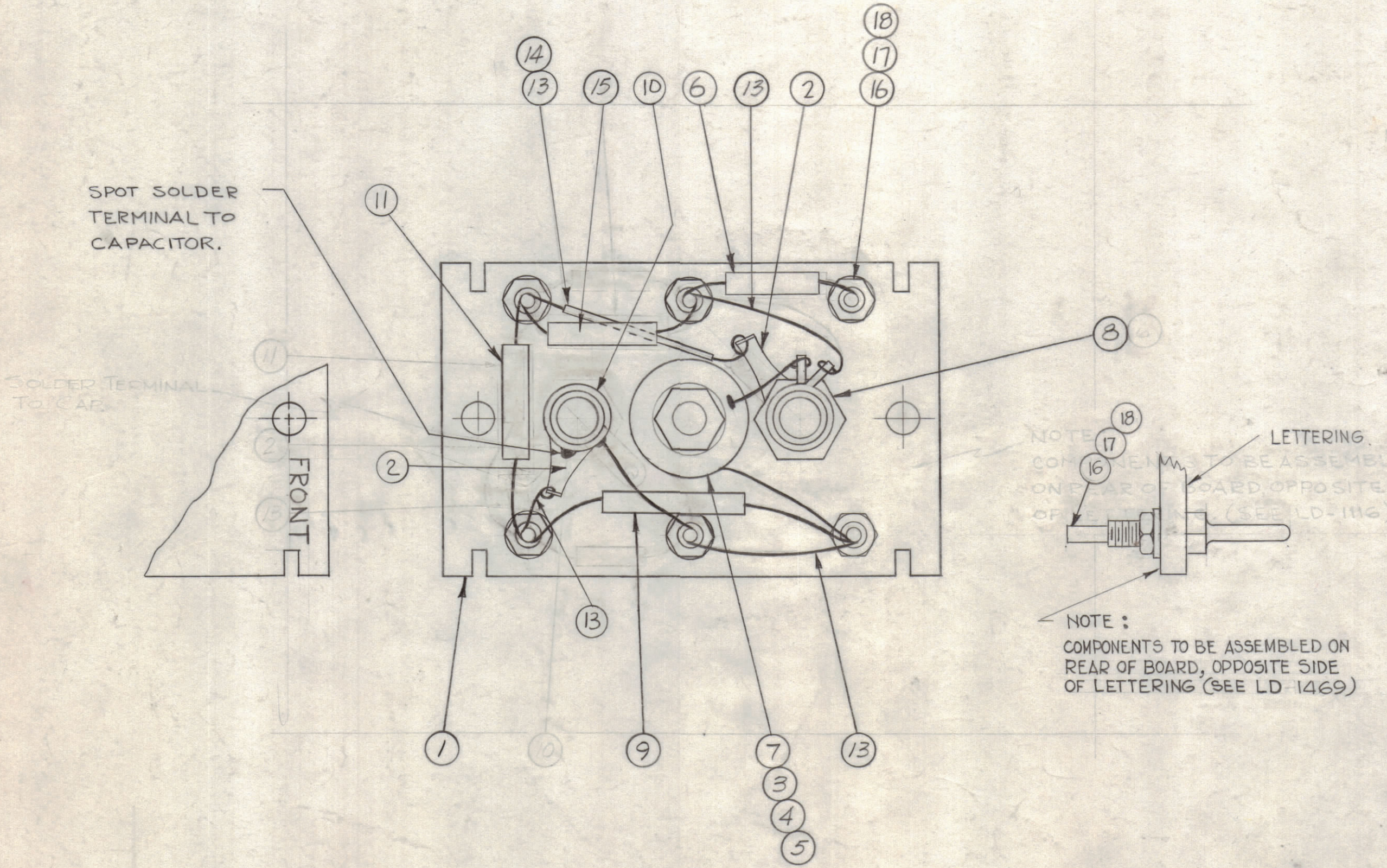


NOTICE TO PERSONS RECEIVING THIS DRAWING
 THE TECHNICAL MATERIEL CORPORATION claims proprietary right in the material disclosed hereon. This drawing is issued in confidence for engineering information only and may not be reproduced or used to manufacture anything shown hereon without permission from THE TECHNICAL MATERIEL CORPORATION to the user. This drawing is loaned for mutual assistance and is subject to recall at any time.
 Property of:
 THE TECHNICAL MATERIEL CORPORATION
 MAMARONECK, NEW YORK

NOTE~
 COMPONENTS TO BE ASSEMBLED ON REAR OF BOARD, OPPOSITE SIDE OF LETTERING. (SEE LD-1469).



| | | | | |
|---|----|------------------|--------------------------------|-------|
| 6 | 18 | NTH0440 BNG | NUT, HEX. | |
| 6 | 17 | LW504 MRN | WASHER, LOCK, SPRING TYPE | |
| 6 | 16 | TE 191-1 | TERMINAL | |
| 1 | 15 | CM20F911G03 | CAPACITOR, 910 MMF | C1109 |
| X | 14 | PX 104-1-034 | INSULATION, SLEEVING #20 | |
| X | 13 | WL 100-6 | WIRE, BUSS #20 | |
| X | 12 | BS 100 | SOLDER, SOFT | |
| 1 | 11 | CM20F561G03 | CAPACITOR, 560 MMF | C1110 |
| 1 | 10 | CV 108-3 | CAPACITOR, VARIABLE 0.9-18MMF | C1113 |
| 1 | 9 | CM15F181G03 | CAPACITOR, 180 MMF | C1112 |
| 1 | 8 | AC 169 | COIL RF, TUNED | L1054 |
| 1 | 7 | CL 333 | COIL, RF, ASSY. | L1032 |
| 1 | 6 | CM15C240J03 | CAPACITOR 24MMF | C1114 |
| 1 | 5 | FW 101-1 | WASHER, FLAT, NYLON | |
| 1 | 4 | NT 137-0632 | NUT, NYLON | |
| 1 | 3 | SC 143-0632-B-10 | SCREW, NYLON | |
| 2 | 2 | TE 104-4 | LUG, GROUND | |
| 1 | 1 | LD-1469/PX-650 | TERMINAL BOARD OSC. (LETTERED) | A 308 |

| | | | | |
|--|------|-------------------|-------------|-----------------|
| REQ. | ITEM | PART NO. | DESCRIPTION | SYMBOL |
| | | | ANGER | |
| THE TECHNICAL MATERIEL CORP. MAMARONECK, NEW YORK | | | | |
| STOCK SIZE | | | | |
| MATERIAL | | | | |
| AX 405 ASS'Y (TERMINAL BOARD, OSC. BAN# 4) | | | | |
| TYPE & TEMPER | | HEAT TREAT. SPEC. | | |
| FINISH & SPEC. NO. | | ELEC. DES. APP. | | MECH. DES. APP. |
| | | DRAWN | | CHECKED |
| | | FINAL APPROVAL | | |
| | | A 3498 | | B |
| | | SHEET | | OF |

| | | | | | |
|--------------------------------|---------------------------------|-------------|--|---------|--------|
| B | ADD -03 TO IT'S 6,9,11,15 P/N | 3-1-67 | 17852 | RME | QC/... |
| A | IT 10 P/N WAS CV110-1 | 1-22-65 | 13337 | ... | ... |
| Ø | ORIGINAL RELEASE FOR PRODUCTION | 8-13-64 | | ... | ... |
| X | EXPERIMENTAL RELEASE | 3-26-64 | | ... | ... |
| SYM | ZONE | DESCRIPTION | DATE | CH. NO. | DRAFTS |
| UNLESS OTHERWISE SPECIFIED: | | | SCALE 2:1 | | |
| DIMENSIONS ARE IN INCHES | | | MAXIMUM ALLOWABLE TOLERANCES HAVE BEEN DETERMINED AND ANY DEVIATIONS WILL BE CAUSE FOR REJECTION. REMOVE ALL BURRS & SHARP EDGES | | |
| TOLERANCES ON FRACTIONS ± 1/64 | | | DECIMALS ± .005 | | |
| | | | ANGLES ± 1/2° | | |

| | | | | |
|---------------|--------|---------|------------|------|
| 1 | HFR-2 | | | |
| 1 | HFR-1A | | 2-25-64 | |
| REQ. PER UNIT | MODEL | SECTION | ASS'Y. NO. | DATE |
| | | | | |